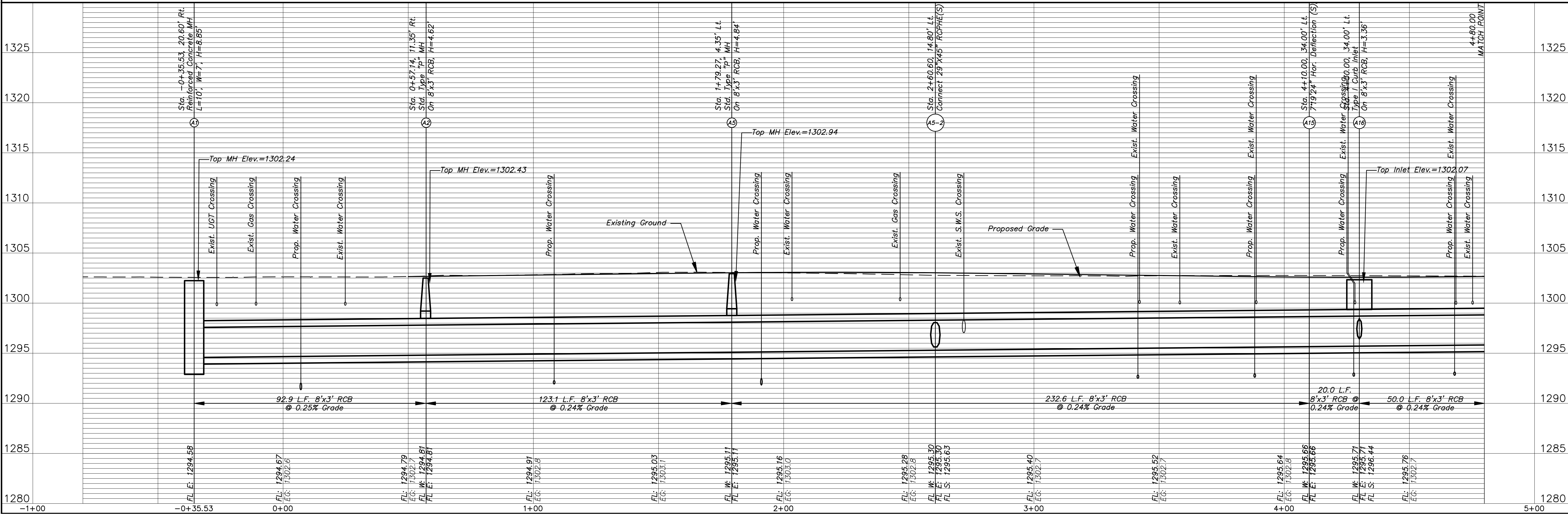
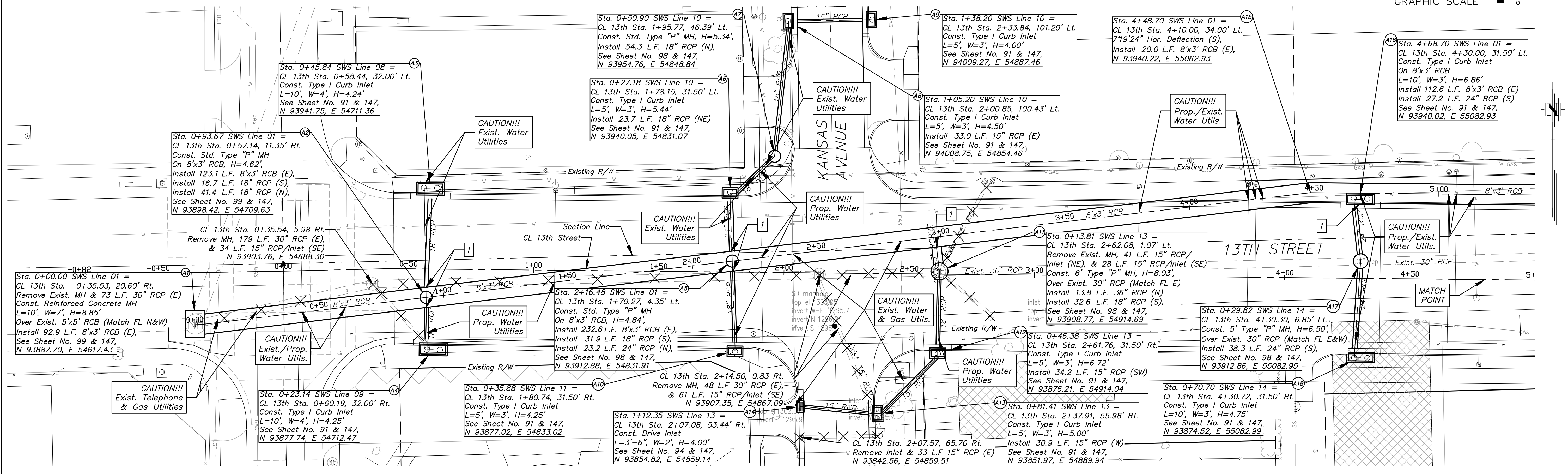
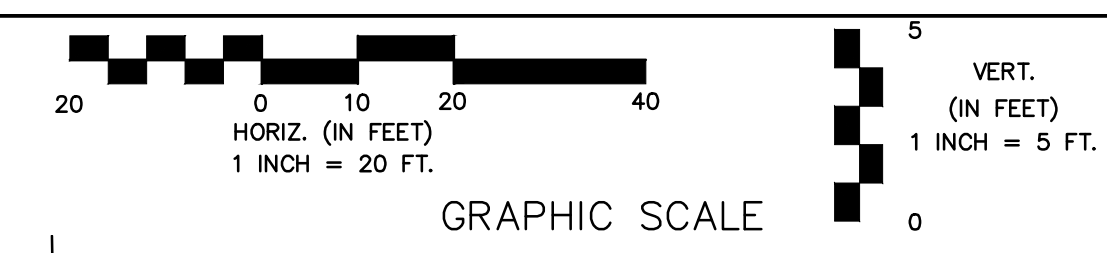


7 Connect SWS to Proposed RCB/RCP as Shown in Profile

Existing Structure to be Removed by Others



13TH STREET NORTH FROM HYDRAULIC TO OLIVER
STREET & DRAINAGE IMPROVEMENTS
STORM SEWER PLAN & PROFILE
CITY OF WICHITA, KANSAS
JAMES L. ARMOUR, P.E., L.S., CITY ENGINEER
C.O.# 472-84520 O.C.# 709933

POE & ASSOCIATES, INC.
CONSULTING ENGINEERS
5940 E. Central, Suite 200 • Wichita, KS 67208-4242
Phone 316/685-4114 • FAX 316/685-4444

FINAL

Designed By: J. DICKMAN
Drawn By: M. TUCKER
Poe Job No.: 1871A
Date: March 2012

Sheet 102 of 374