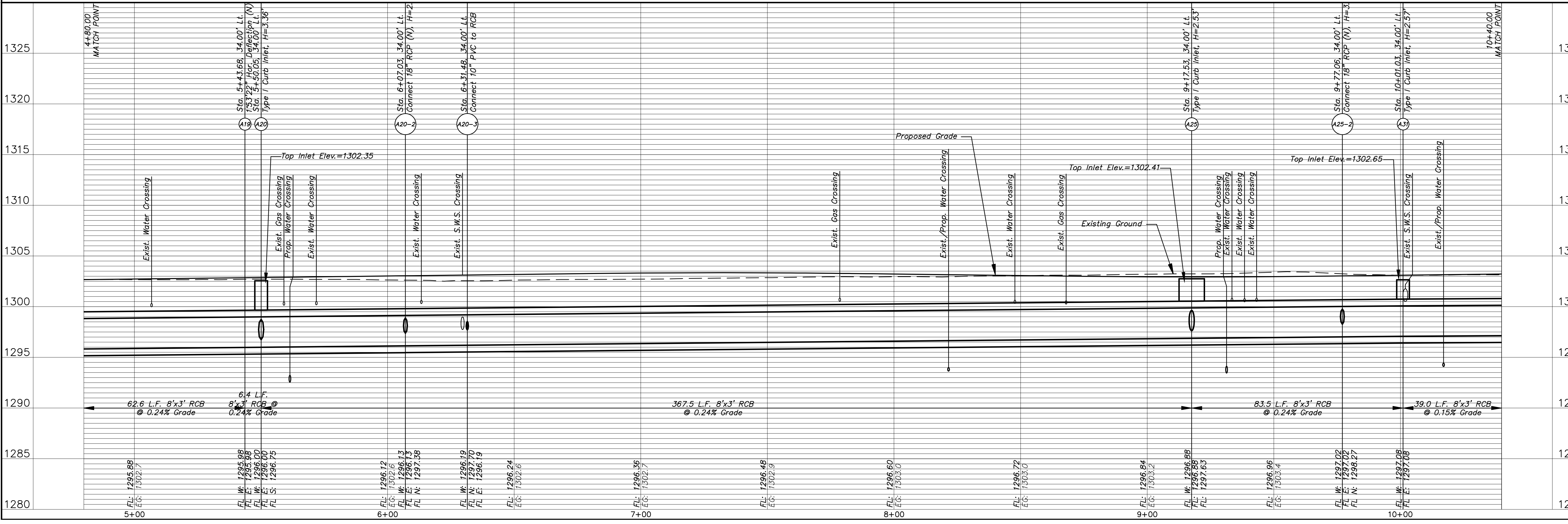
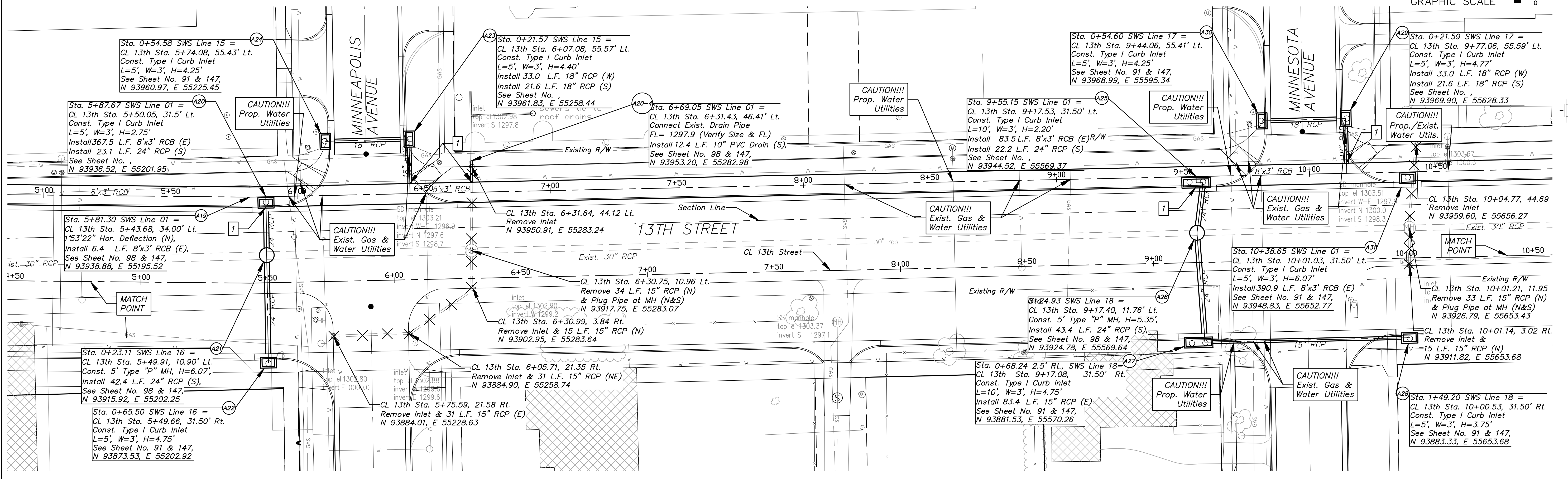
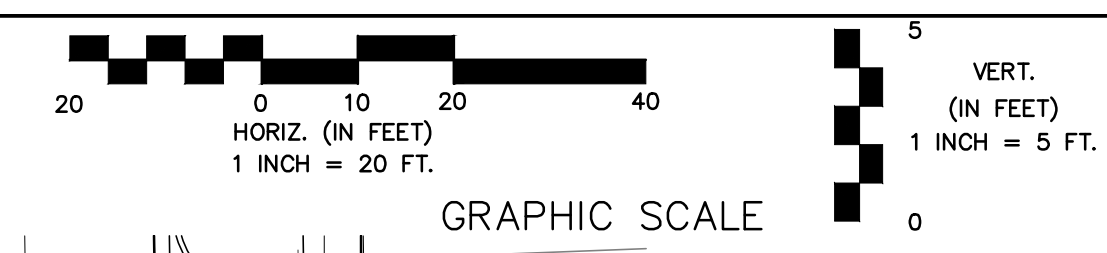


7 Connect SWS to Proposed RCB/RCP as Shown in Profile

Existing Structure to be Removed by Others



13TH STREET NORTH FROM HYDRAULIC TO OLIVER STREET & DRAINAGE IMPROVEMENTS STORM SEWER PLAN & PROFILE

CITY OF WICHITA, KANSAS

JAMES L. ARMOUR, P.E., L.S., CITY ENGINEER

C.O.# 472-84520 O.C.# 708933

POE & ASSOCIATES, INC.

CONSULTING ENGINEERS

5940 E. Central, Suite 200 • Wichita, KS 67208-4242

Phone 316/685-4114 • FAX 316/685-4444

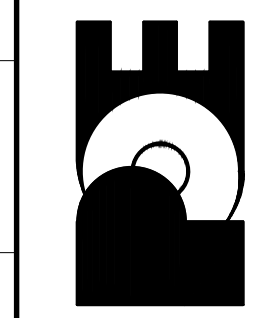
Designed By: J. DICKMAN

Drawn By: M. TUCKER

Poe Job No.: 1871A

Date: March 2012

Sheet 103 of 374



FINAL