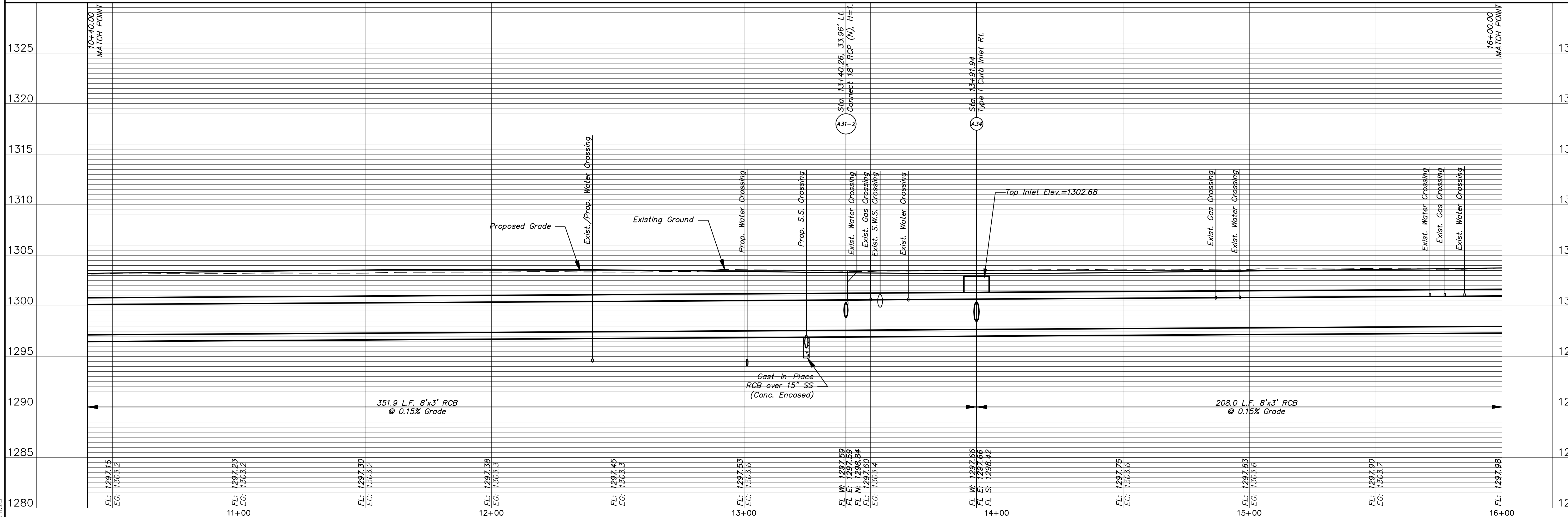
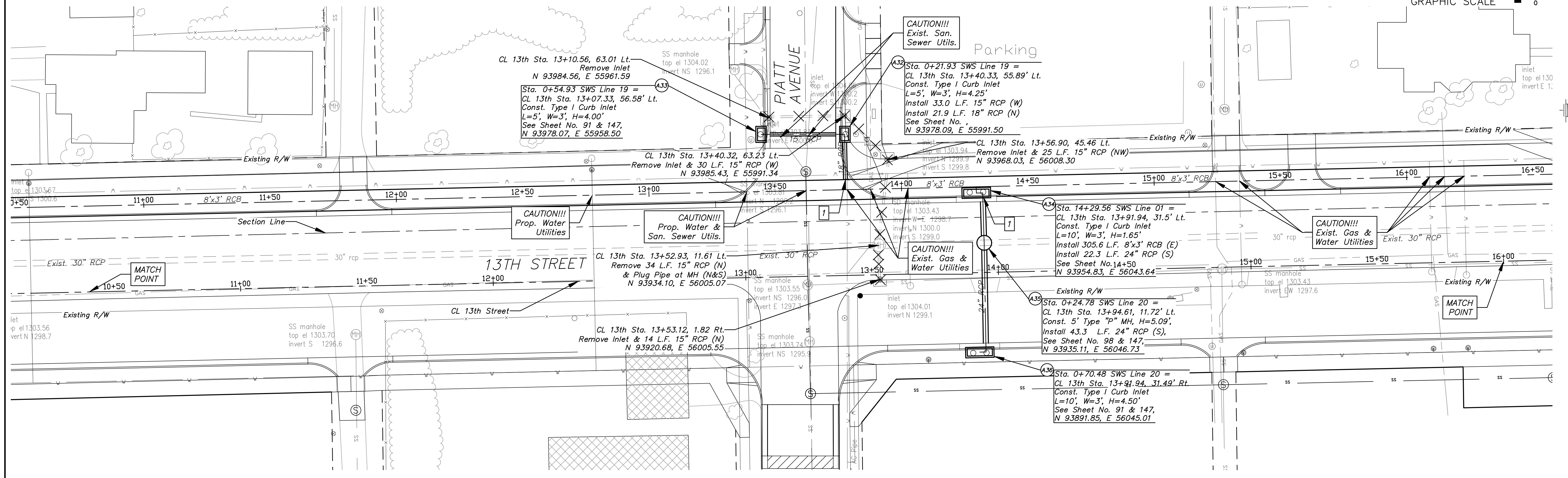
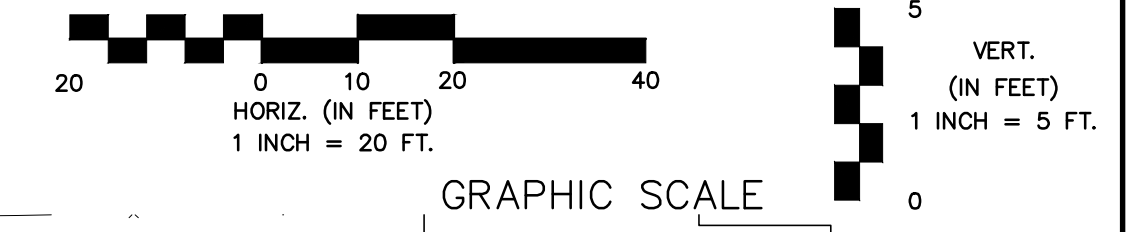


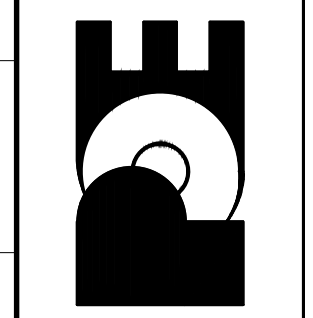
7 Connect SWS to Proposed RCB/RCP as Shown in Profile

Existing Structure to be Removed by Others



13TH STREET NORTH FROM HYDRAULIC TO OLIVER
 STREET & DRAINAGE IMPROVEMENTS
 STORM SEWER PLAN & PROFILE
 CITY OF WICHITA, KANSAS
 JAMES L. ARMOUR, P.E., L.S., CITY ENGINEER
 C.O.W. Proj.# 472-84320 O.C.A.# 709933

POE & ASSOCIATES, INC.
 CONSULTING ENGINEERS
 5940 E. Central, Suite 200 ■ Wichita, KS 67208-4242
 Phone 316/685-4114 ■ FAX 316/685-4444



FINAL
 Designed By: J. DICKMAN
 Drawn By: M. TUCKER
 P.O. Job No.: 1871A
 Date: March 2012