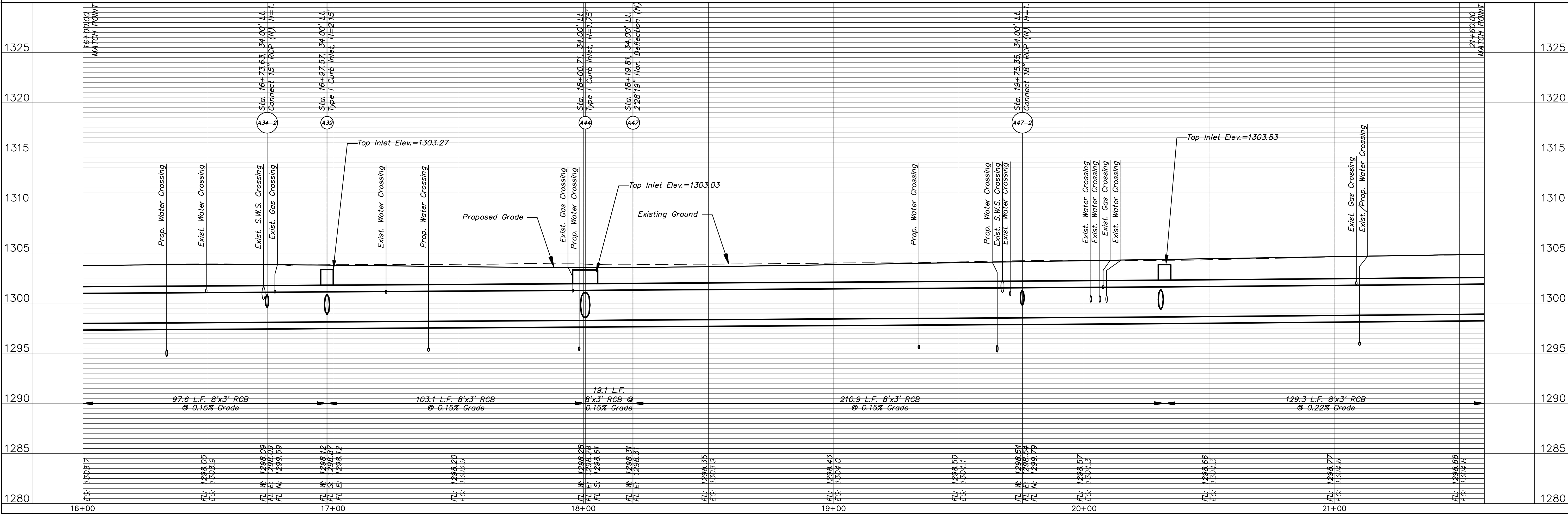
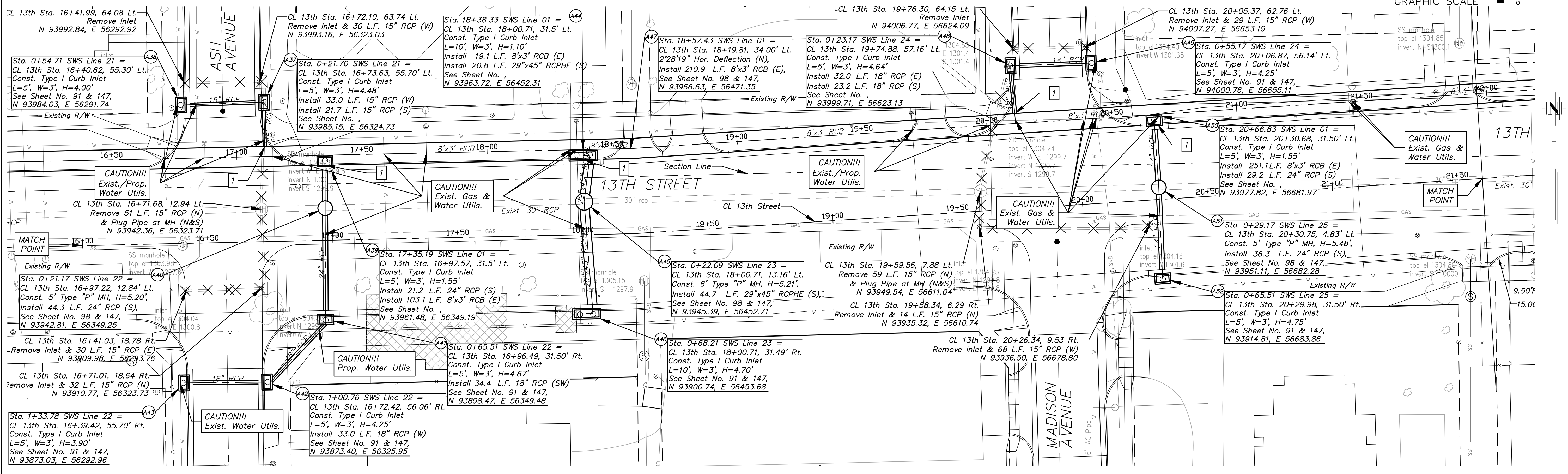
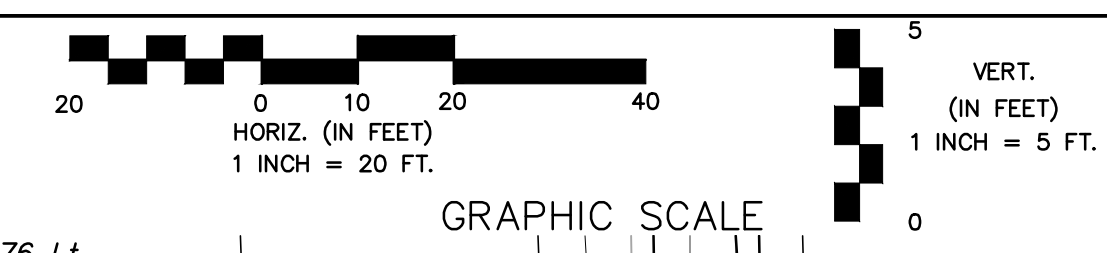


7 Connect SWS to Proposed RCB/RCP as Shown in Profile

Existing Structure to be Removed by Others



13TH STREET NORTH FROM HYDRAULIC TO OLIVER STREET & DRAINAGE IMPROVEMENTS STORM SEWER PLAN & PROFILE

CITY OF WICHITA, KANSAS

JAMES L. ARMOUR, P.E., L.S., CITY ENGINEER

C.O.W. Proj.# 472-84320 O.C.A.# 708933

---

POE & ASSOCIATES, INC.

CONSULTING ENGINEERS

5940 E. Central, Suite 200 ■ Wichita, KS 67208-4242

Phone 316/685-4114 ■ FAX 316/685-4444

---

FINAL

Designed By: J. DICKMAN

Drawn By: M. TUCKER

Poe Job No.: 1871A

Date: March 2012

Sheet 105 of 374