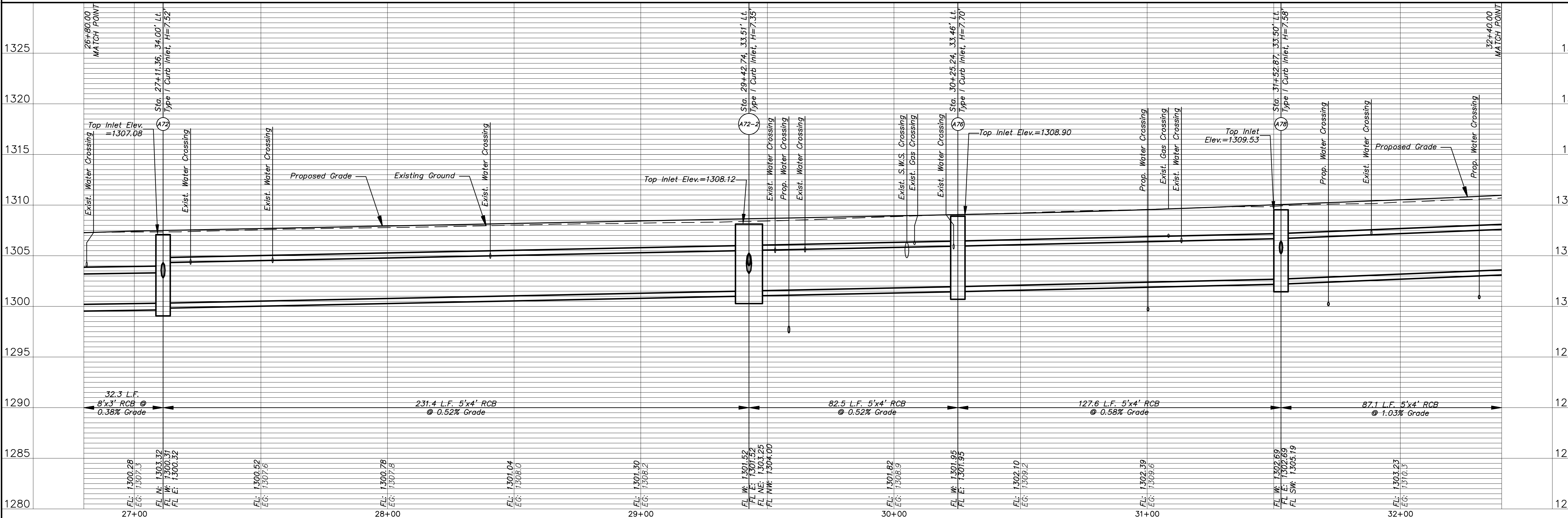
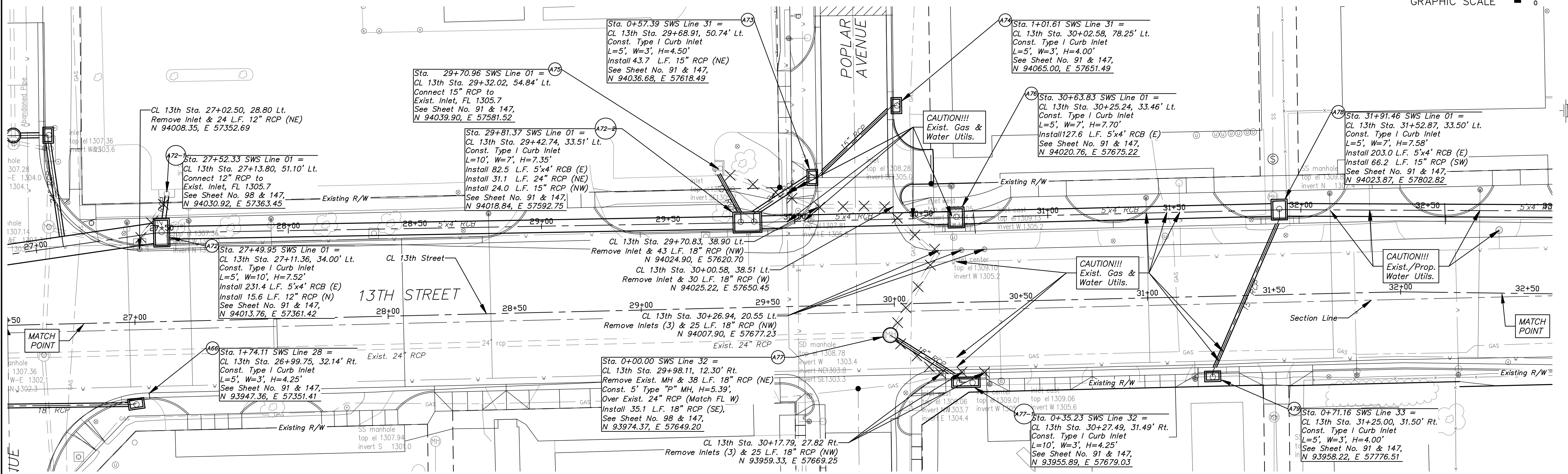
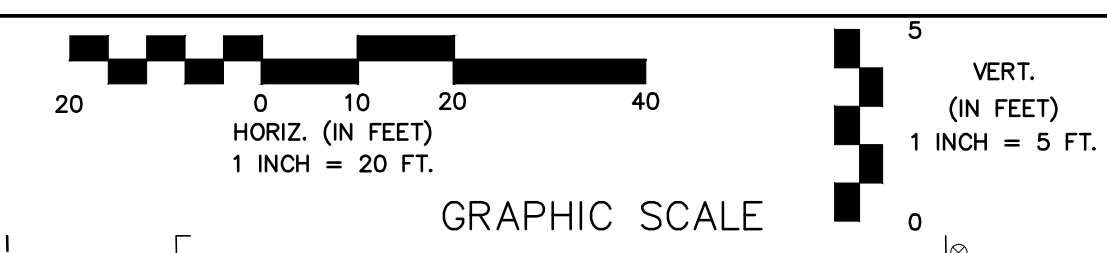


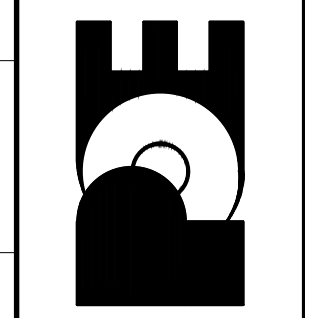
7 Connect SWS to Proposed RCB/RCP as Shown in Profile

Existing Structure to be Removed by Others



13TH STREET NORTH FROM HYDRAULIC TO OLIVER  
 STREET & DRAINAGE IMPROVEMENTS  
 STORM SEWER PLAN & PROFILE  
 CITY OF WICHITA, KANSAS  
 JAMES L. ARMOUR, P.E., L.S., CITY ENGINEER  
 C.O.# 472-84320 O.C.# 709933

POE & ASSOCIATES, INC.  
 CONSULTING ENGINEERS  
 5940 E. Central, Suite 200 ■ Wichita, KS 67208-4242  
 Phone 316/685-4114 ■ FAX 316/685-4444



FINAL  
 Designed By: J. DICKMAN  
 Drawn By: M. TUCKER  
 P.O. Job No.: 1871A  
 Date: March 2012