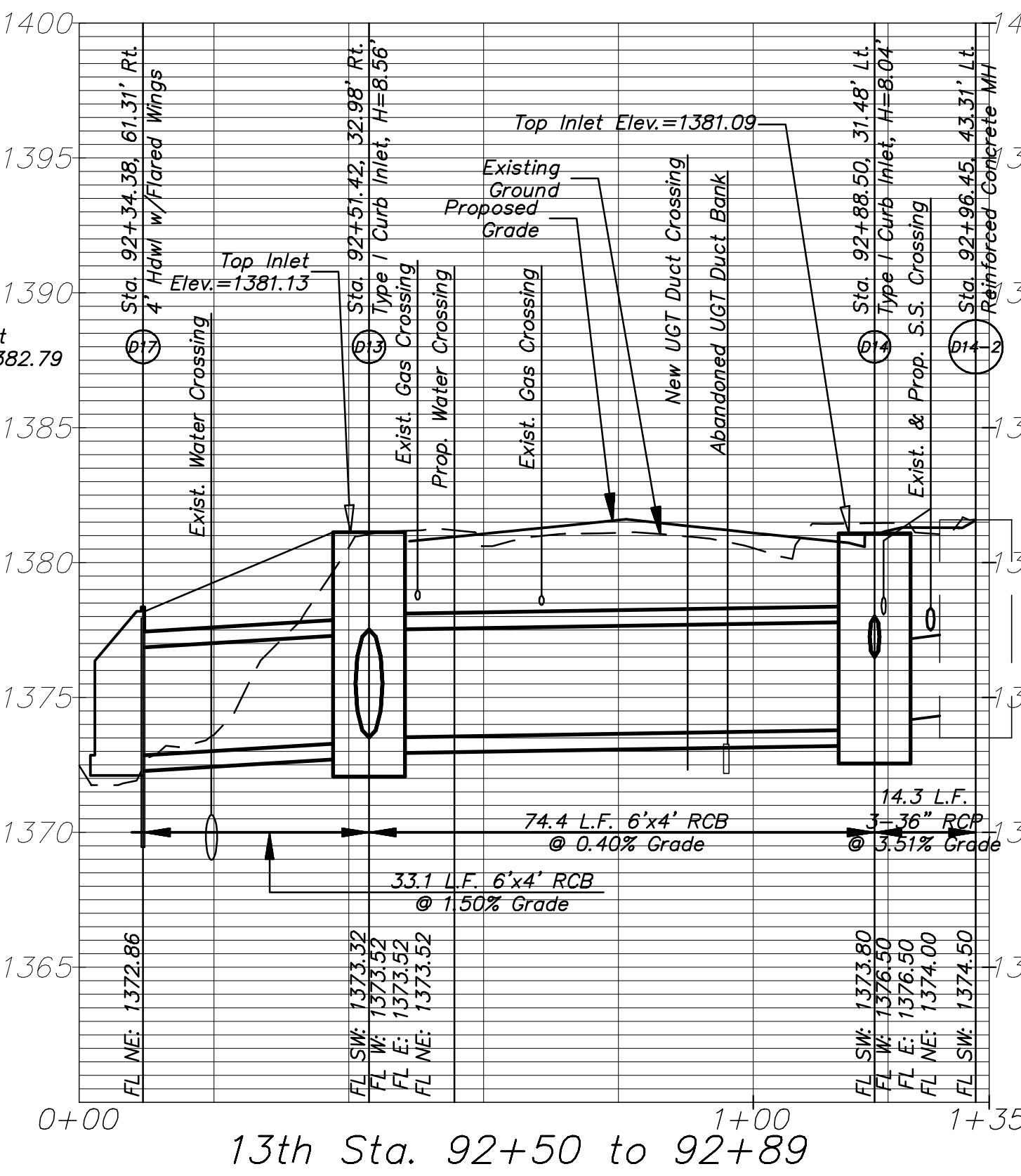
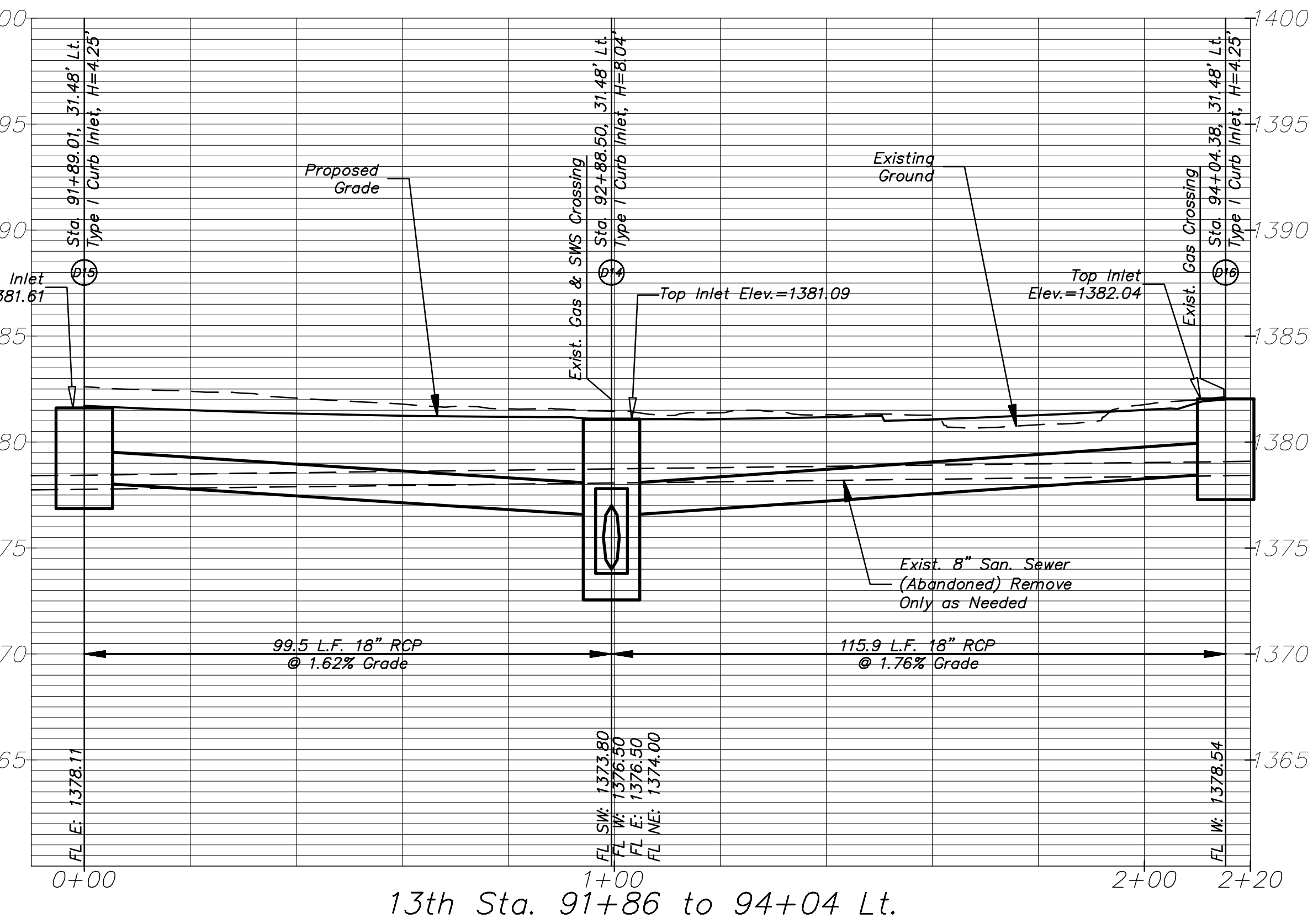


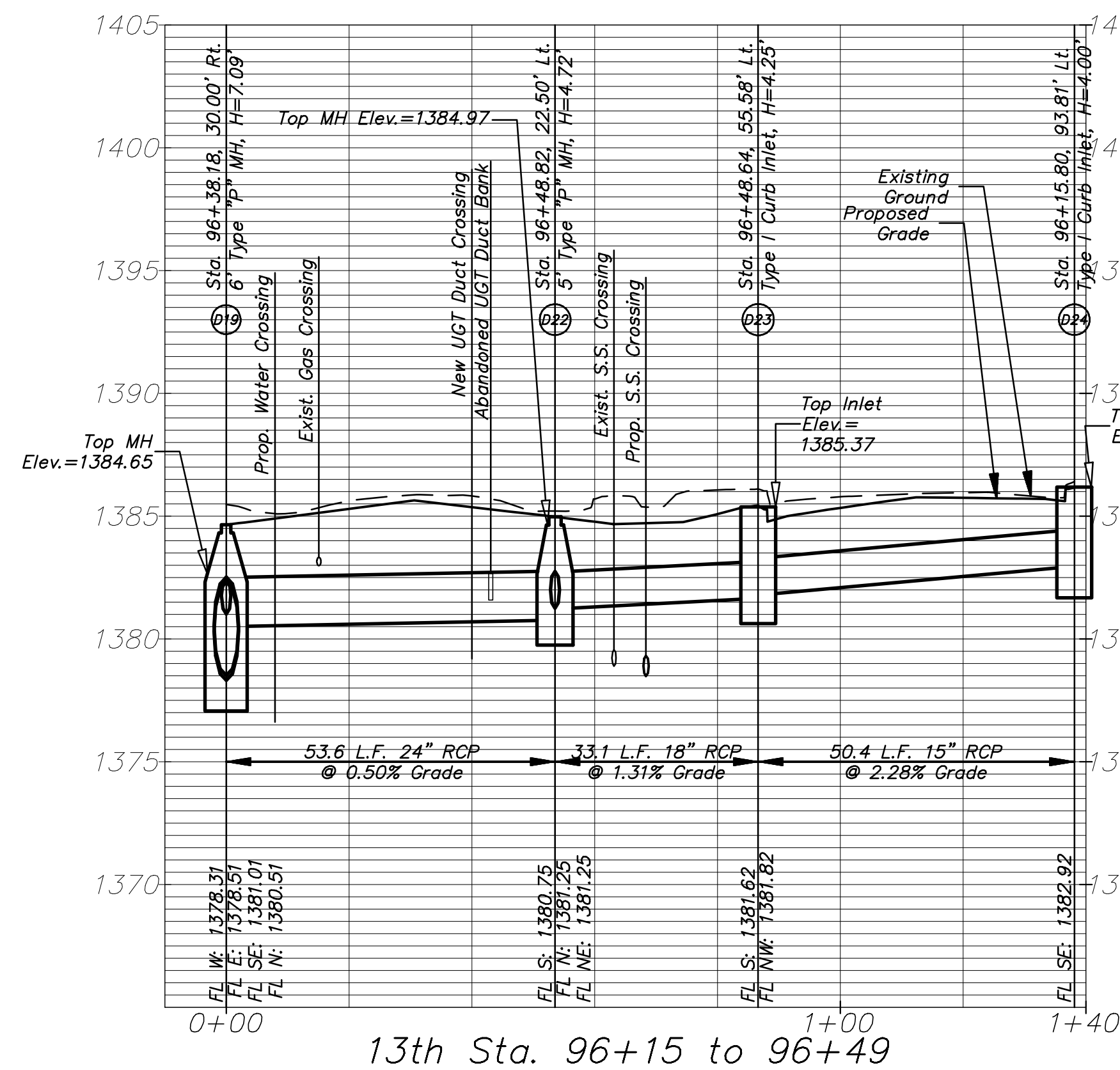
13th Sta. 91+02 to 91+60



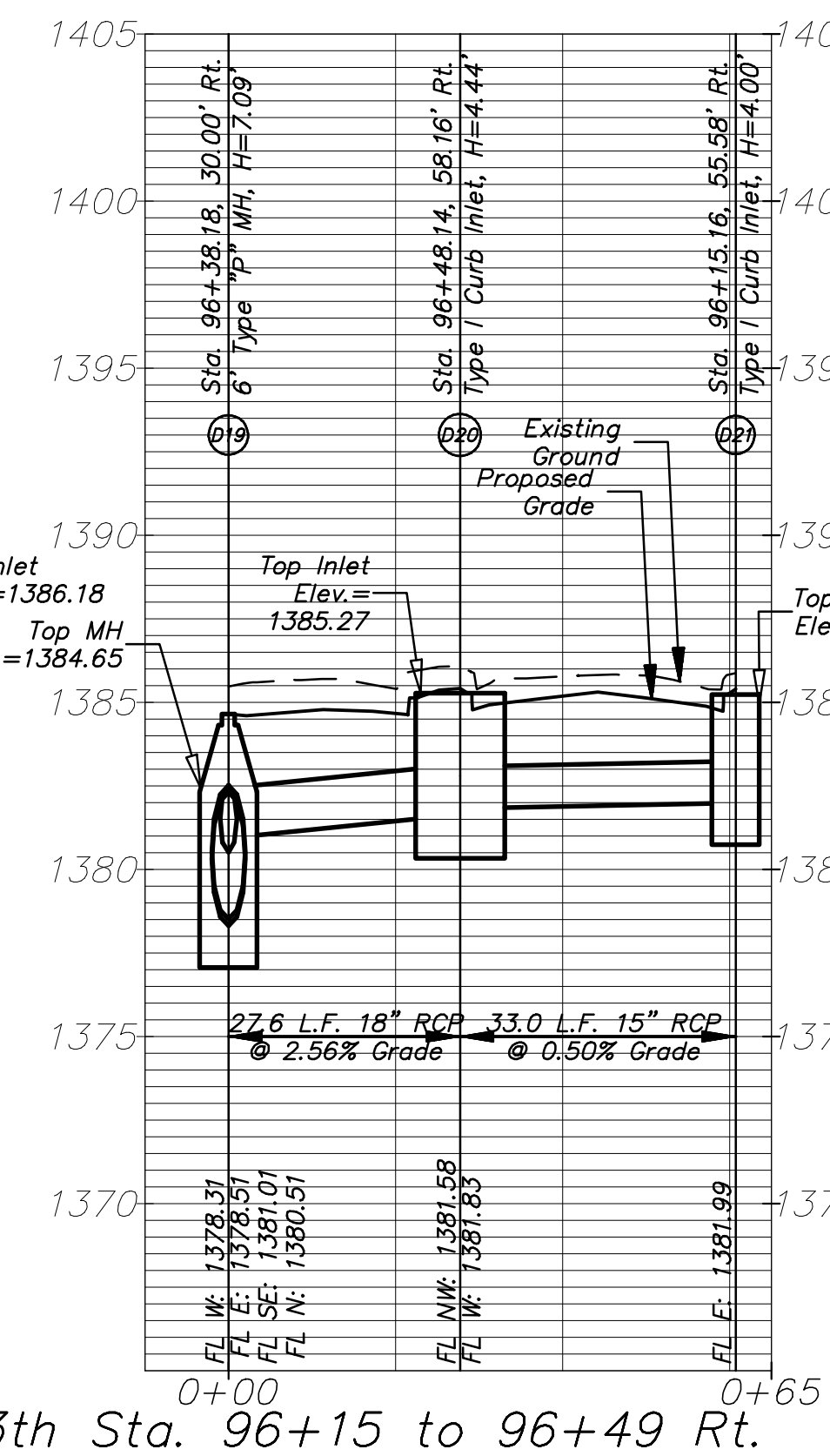
13th Sta. 92+50 to 92+89



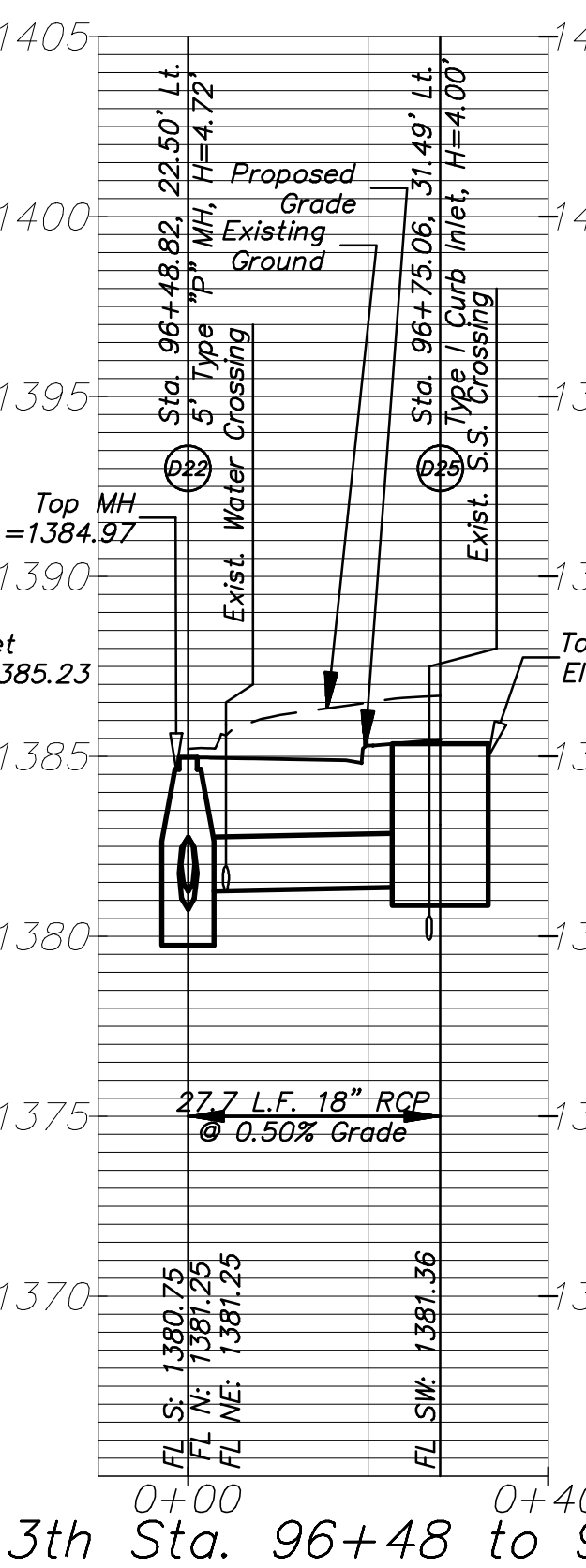
13th Sta. 91+86 to 94+04 Lt.



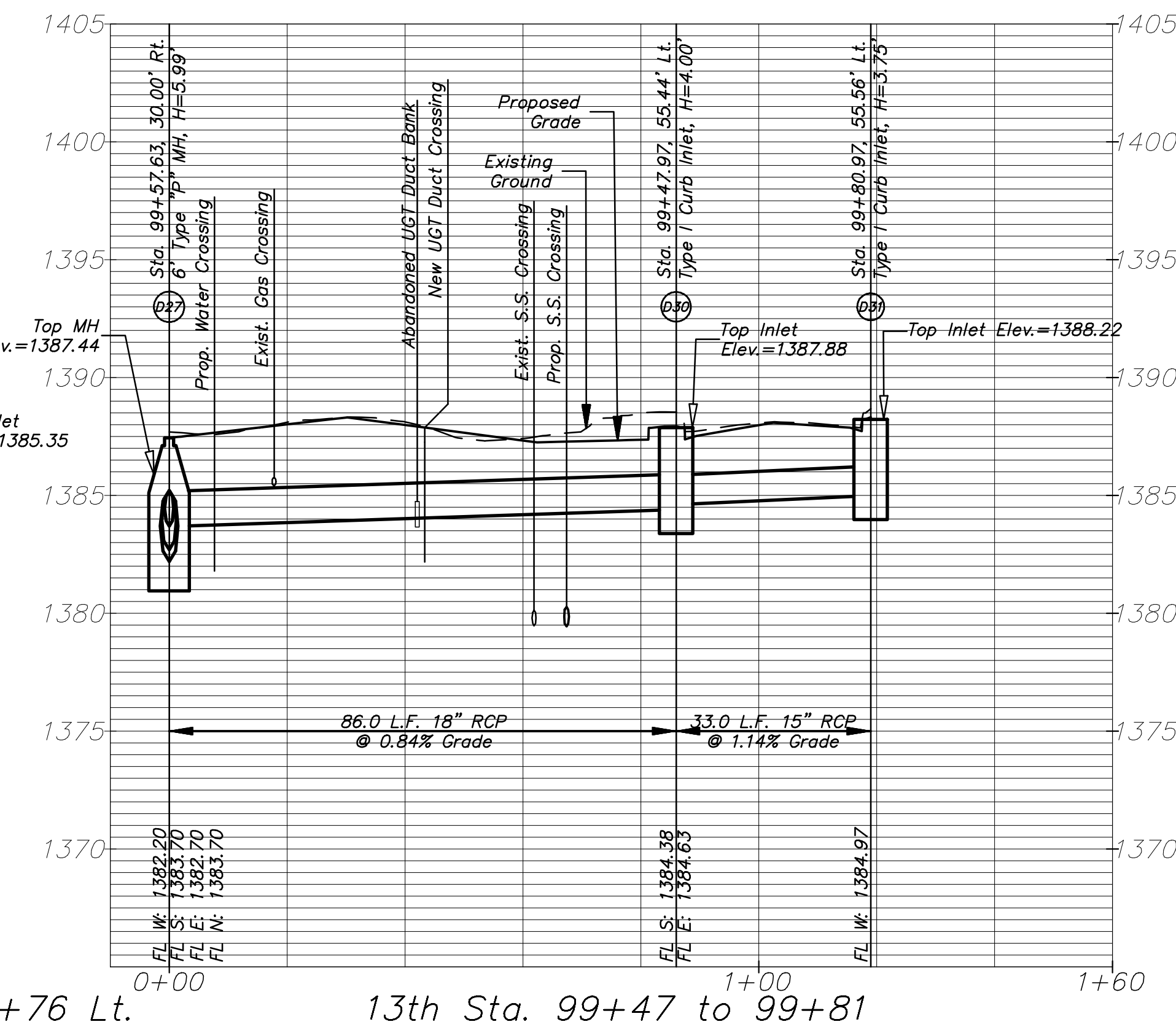
13th Sta. 96+15 to 96+49



13th Sta. 96+15 to 96+49 Rt.



13th Sta. 96+48 to 96+76 Lt.



13th Sta. 99+47 to 99+81

FINAL

Designed By: J. DICKMAN
 Drawn By: M. TUCKER
 P.O. Job No.: 1871A
 Date: March 2012

POE & ASSOCIATES, INC.
 CONSULTING ENGINEERS
 5940 E. Central, Suite 200 ■ Wichita, KS 67208-4242
 Phone 316/685-4111 ■ FAX 316/685-4444

POE

13TH STREET NORTH FROM HYDRAULIC TO OLIVER STREET & DRAINAGE IMPROVEMENTS STORM SEWER PLAN & PROFILE CITY OF WICHITA, KANSAS
 JAMES L. ARMOUR, P.E., L.S. - CITY ENGINEER
 C.O.W. Proj.# 472-84320 O.C.A.# 708933

| No. | Date | By | Approved | Revision |
|-----|------|----|----------|----------|
| | | | | |
| | | | | |
| | | | | |

131 of 374