

PLAN - 6'x4' RCB WITH WINGWALLS
1/4" = 1'-0"

CULVERT SUMMARY					
Floor Elev. Lt.	Floor Elev. Rt.	Crown Gr. Elev.	Right Wings	Scour Apron	Soil Saver
1373.09	1372.50	1381.61	FLARED	YES	NO
Concrete			Reinf. Steel (Gr. 60)		
Barrel (Cu. Yds.)	Wings (Cu. Yds.)	Total (Cu. Yds.)	Barrel (Lbs.)	Wings (Lbs.)	Total (Lbs.)
15.78	6.43	22.21	1778	386	2164

● includes any apron welded wire fabric

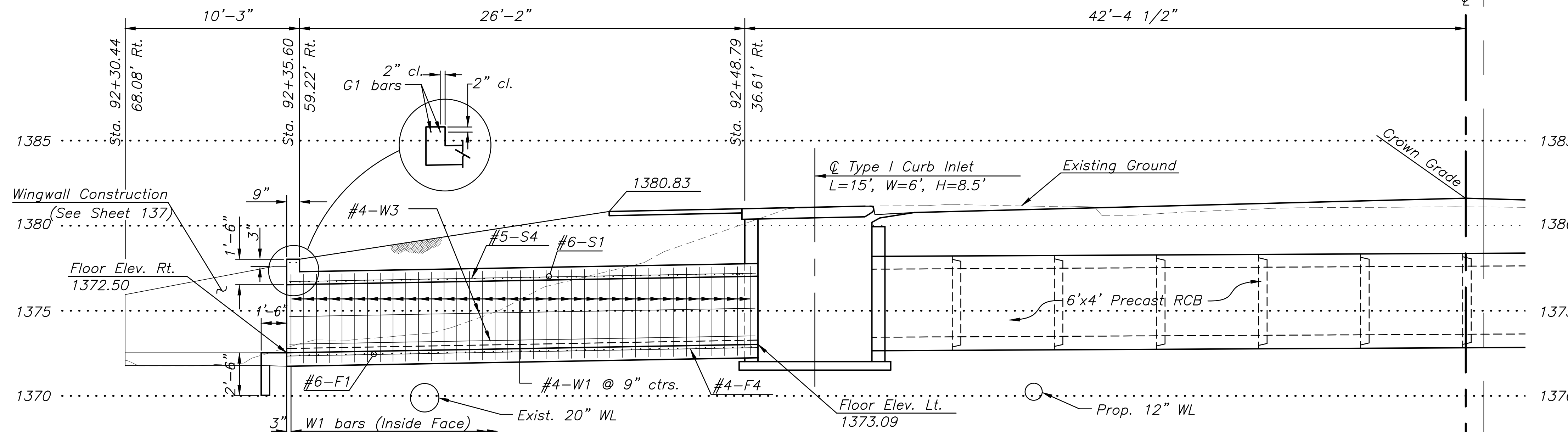
BAR SCHEDULE								
*F1			*F4			S1		
Size	Spa.	No.	Length	Size	No.	Length	Size	Length
6	6 1/2"	54	6'-8"	4	7	28'-9"	6	6'-8"
*S4			W1			*W3		
Size	No.	Length	Size	Spa.	No.	Length	Size	Length
5	5	29'-3"	4	9"	75	5'-3"	4	6
G1			G2					
Size	No.	Length	Size	No.	Length			
5	2	6'-8"	5	2	7'-8"			

* Field Cut as necessary

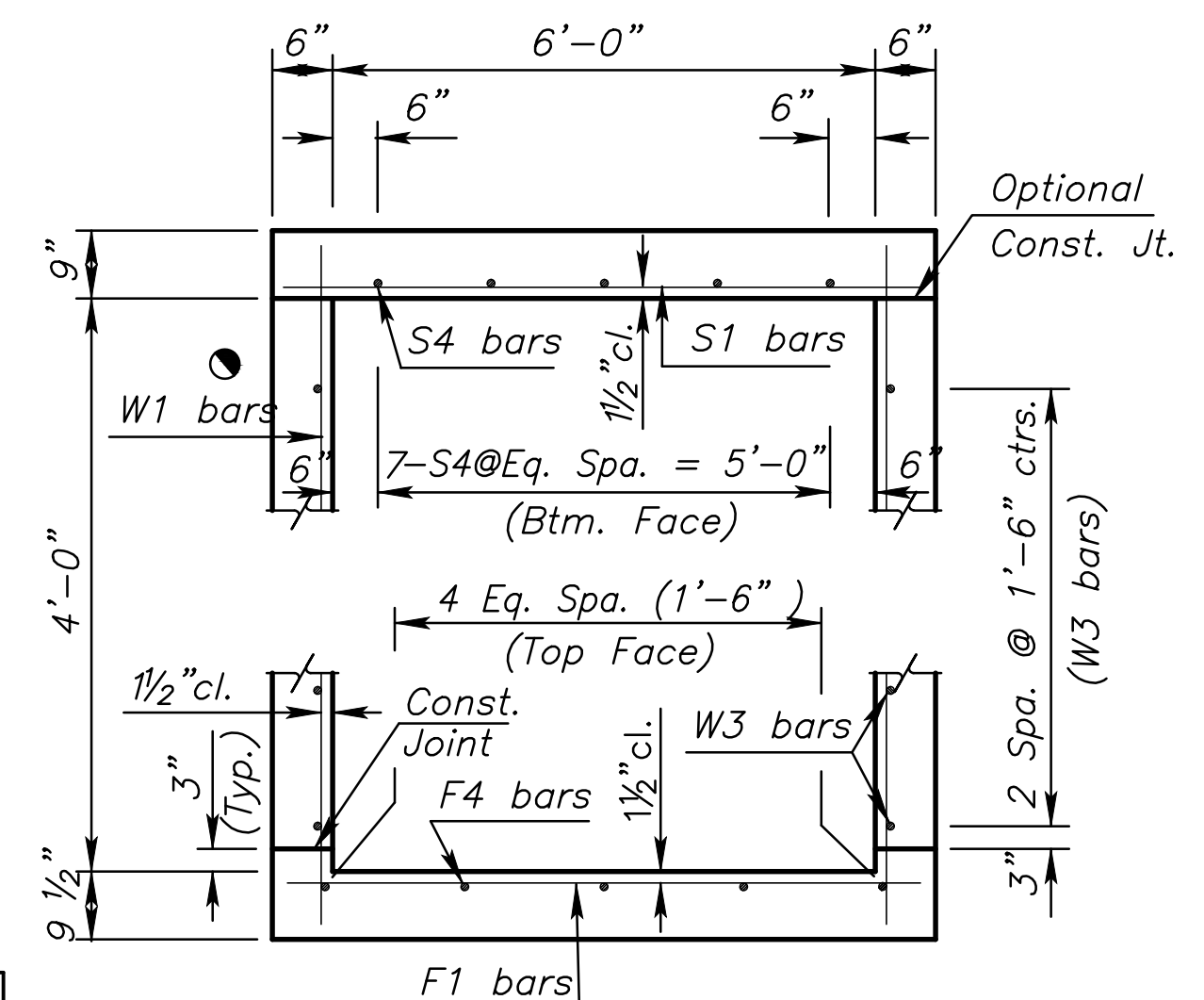
SUMMARY OF QUANTITIES	
Concrete (Grade 4.0)(AE)	22.2 C.Y.
Reinforcing Steel (Gr. 60)	2170 Lbs.
Class III Excavation	35 C.Y.
Foundation Stabilization	10 C.Y.

GENERAL NOTES

- LOADING:** HS20-44 AASHTO Specifications, 1983 Edition.
- UNIT STRESSES:** Grade 4.0 Concrete; $f'_c = 4,000$ p.s.i. Reinforcing Steel; $f_y = 60,000$ p.s.i.
- CONCRETE:** Grade 4.0 (AE) Concrete shall be used throughout. Bevel all exposed edges with a 3/4 inch triangular moulding.
- REINFORCING:** All reinforcing shall conform to ASTM A615, Grade 60. All dimensions relative to reinforcing steel shall be to centerline of bar unless otherwise noted.
- EXCAVATION:** Excavation for culverts less than bridge length shall not be paid for directly but shall be subsidiary to Grade 4.0 Concrete.
- FOUNDATION STABILIZATION:** The Foundation Stabilization quantity has been calculated to the limits shown on the "RCB Auxiliary Details" sheet. The depth may be increased by the Engineer. Use Foundation Stabilization on all wingwalls unless founded on rock or granular material.



ELEVATION - 6'x4' RCB WITH WINGWALLS
1/4" = 1'-0"



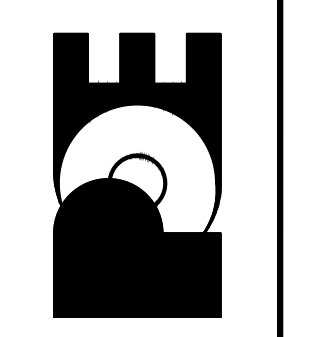
TYPICAL SECTION

● See RCB Auxiliary Details for Optional Splice.

Minimum Splice Lengths	
#4	1'-4"
#5	1'-8"
#6	2'-0"

13TH STREET NORTH FROM KANSAS TO OLIVER
CITY OF WICHITA, KANSAS
6'x4' RCB DETAILS
13TH STREET NORTH AT MACDONALD GOLF COURSE

POE & ASSOCIATES, INC.
CONSULTING ENGINEERS
5940 E. Central, Suite 200 • Wichita, KS 67208-4242
Phone 316/685-4114 • FAX 316/685-4444



ENGINEER: P. FERGUSON
DESIGNER: P. FERGUSON
CITY Job No.: 472-84320
Poe Job No.: 1871
Date: March 2012