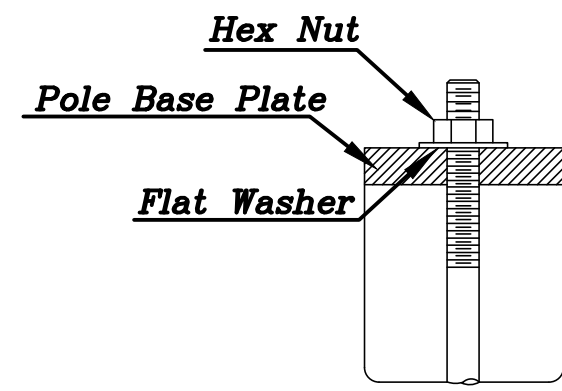
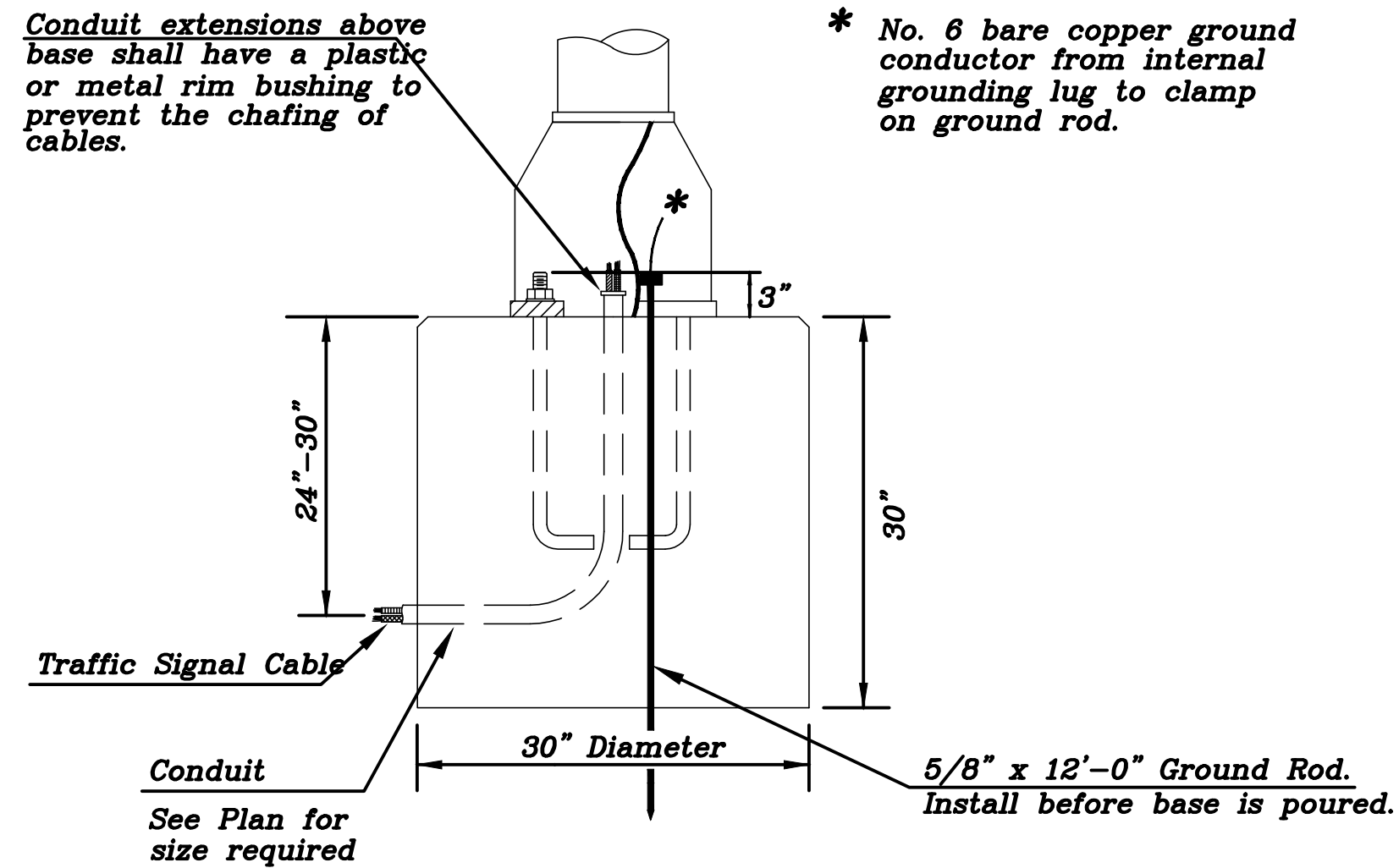
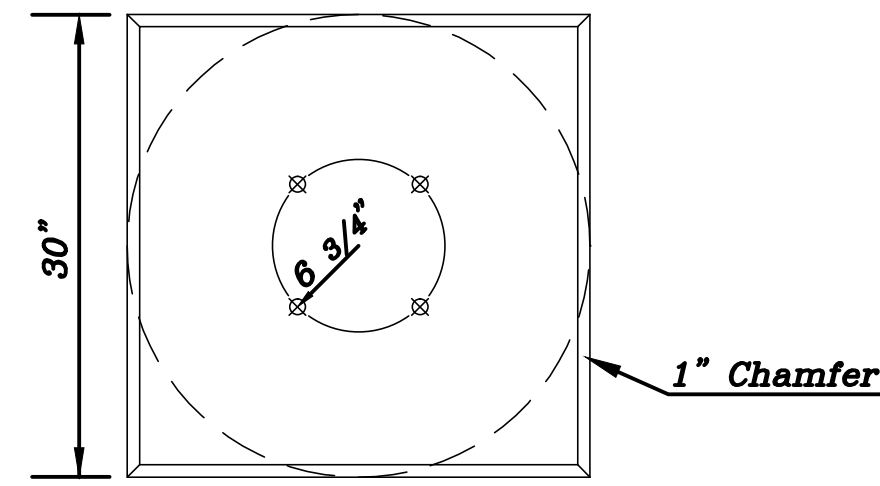


Use Keystone "No-Weld Number 1 Anti-Seize Compound" on all bolts & nuts.

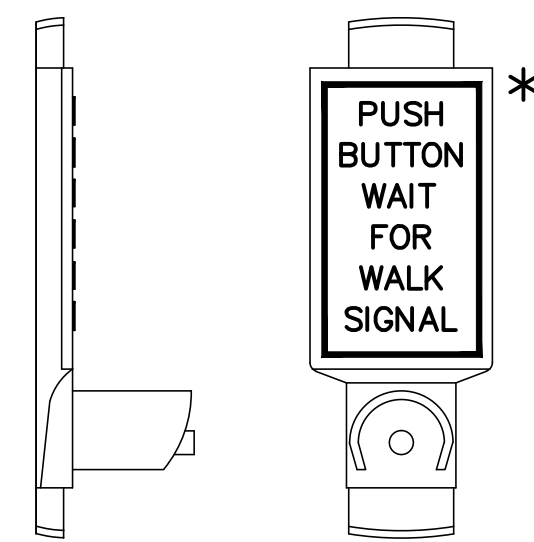


**ANCHOR BOLT  
DETAIL**



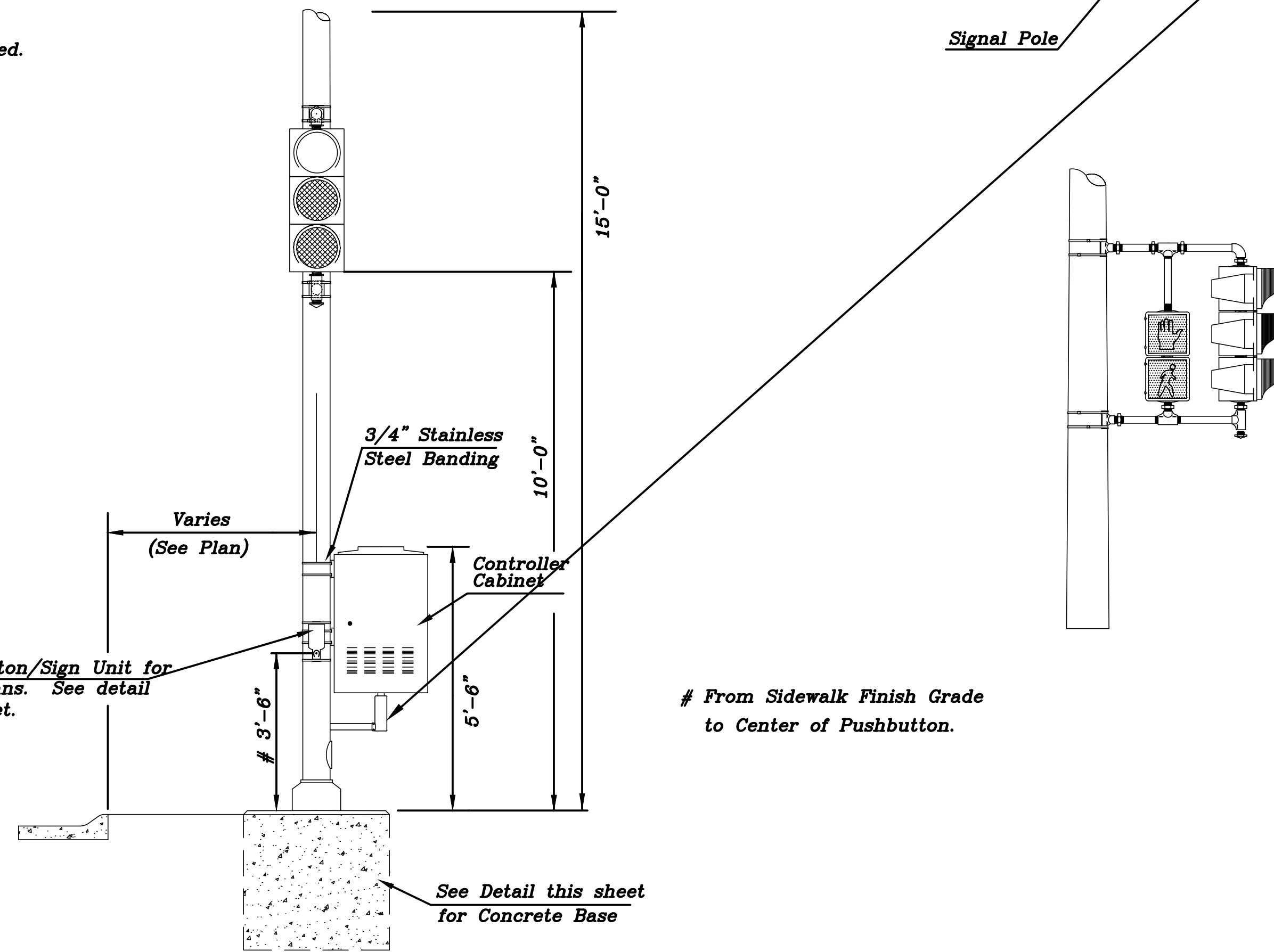
**CONCRETE BASE DETAIL**

\* NOTE: MESSAGE TO BE CAST WITH HOUSING (ONE PIECE)

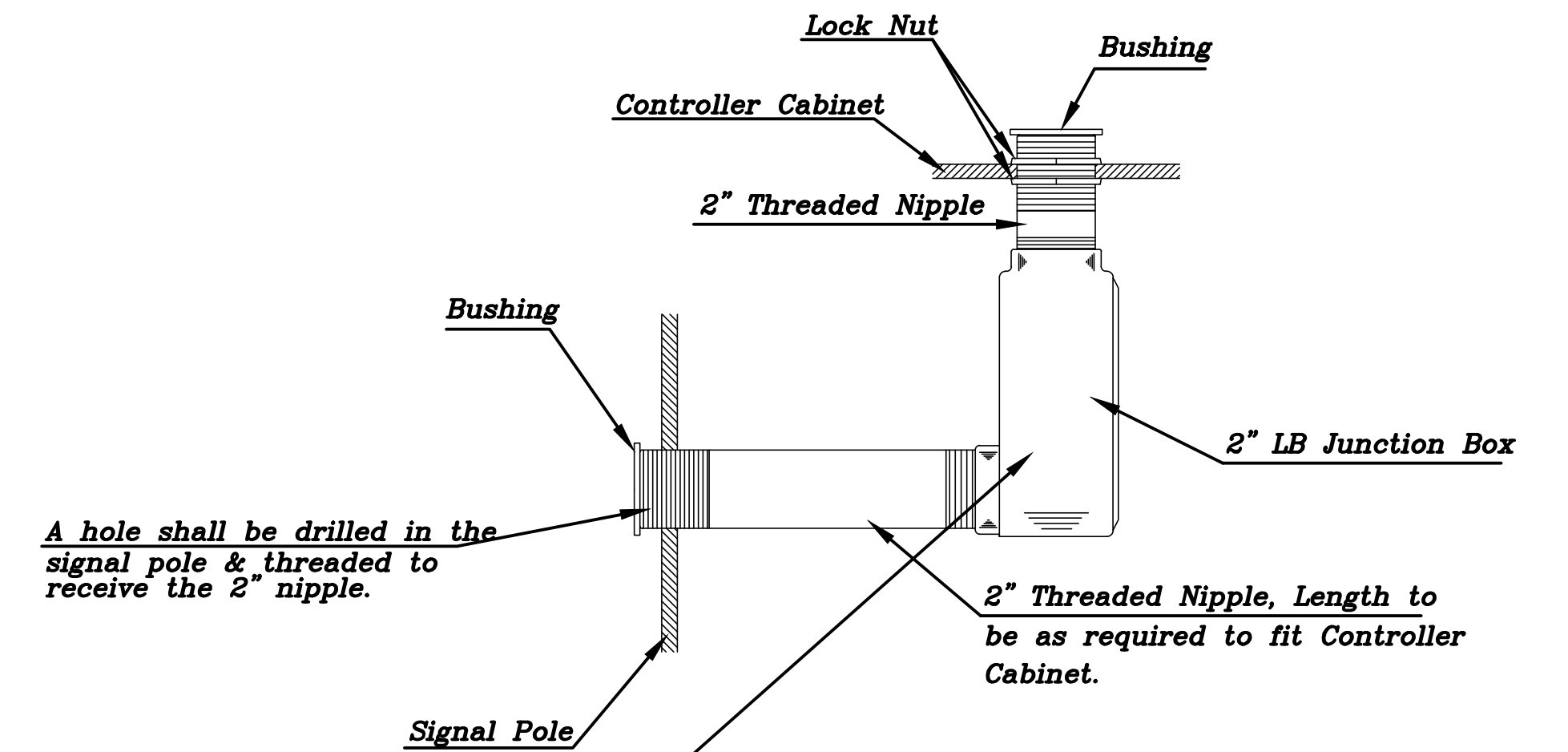


INSTALL PEDESTRIAN PUSHBUTTON UNDERNEATH CORRESPONDING PEDESTRIAN SIGNAL HEAD ON SIDE OF POLE NEAREST CROSSWALK. UNIT SHALL BE FIRMLY ATTACHED TO THE SIDE OF POLE WITH 3/4" STEEL BANDS. SHARP ENDS SHALL BE FOLDED UNDER TO PREVENT INJURY TO PEDESTRIANS.

**PEDESTRIAN PUSHBUTTON/SIGN  
UNIT DETAIL**



**TRAFFIC SIGNAL PEDESTAL**

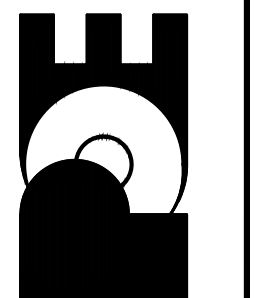


PROJECT DESCRIPTION		
TRAFFIC SIGNAL PEDESTAL & CONCRETE BASE		
DETAIL SHEET		
PROJECT NUMBER		
DRAWN BY: T.M.	SCALE: NO SCALE	REVISED BY: L.R.B.
DATE: MAY 97		DATE: MAY 2004
CITY OF WICHITA DEPARTMENT OF PUBLIC WORKS		
ENGINEERING DIVISION		
PAUL GUNZELMAN, TRAFFIC ENGINEER		SHEET OF

No.	Date	By	Approved	Revision

13TH STREET NORTH FROM KANSAS TO OLIVER  
CITY OF WICHITA, KANSAS  
TRAFFIC SIGNAL PEDESTAL AND CONCRETE BASE DETAIL

POE & ASSOCIATES, INC.  
CONSULTING ENGINEERS  
5940 E. Central, Suite 200 • Wichita, KS 67208-4242  
Phone 316/685-4114 • FAX 316/685-4444



Engineer: P. FERGUSON  
Designer: P. FERGUSON  
CITY Job No.: 472-84320  
Date: March, 2012  
Poe Job No.: 1871  
Sheet 1780 of 374