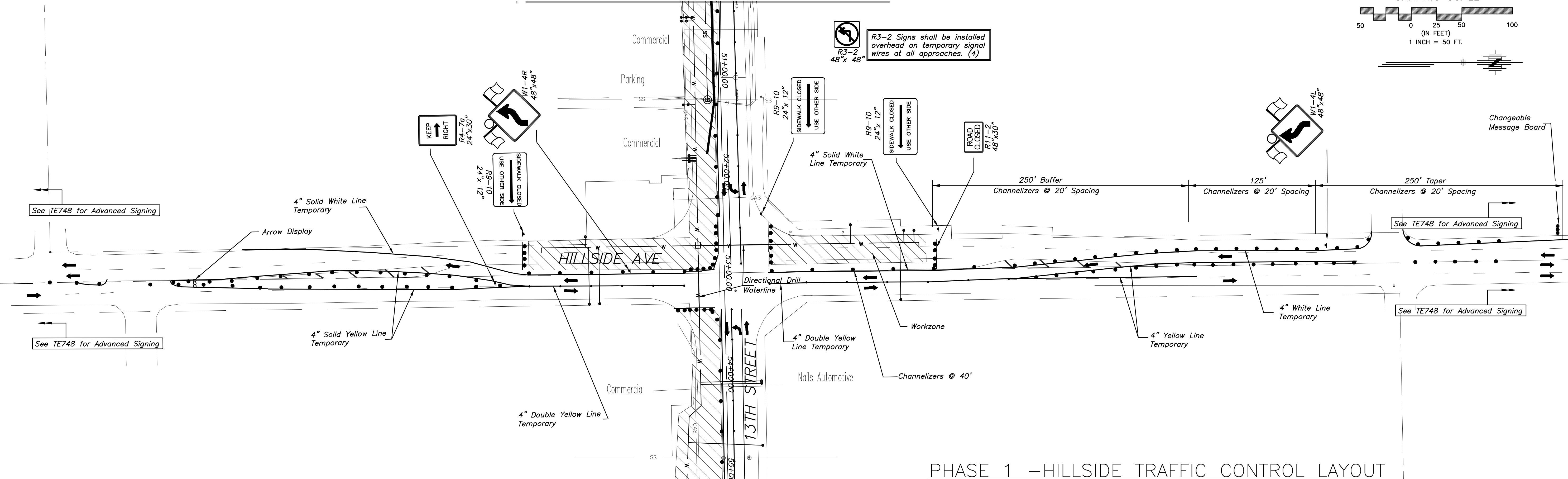
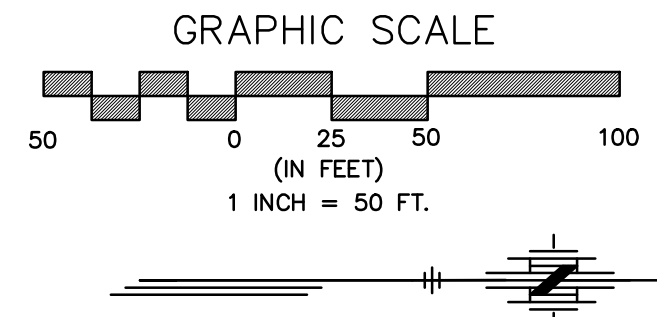
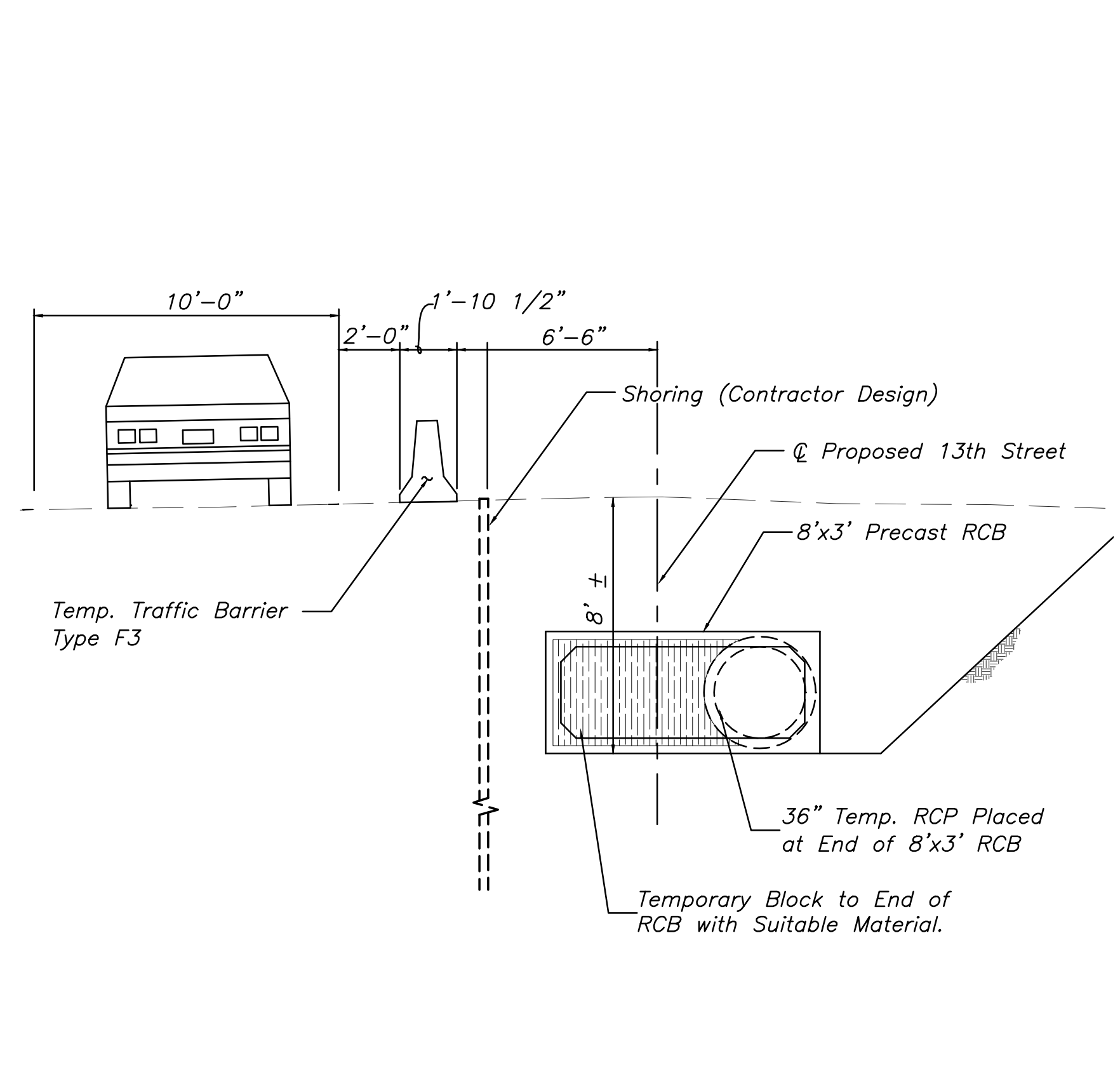


For Continuation See Sheet No. 191

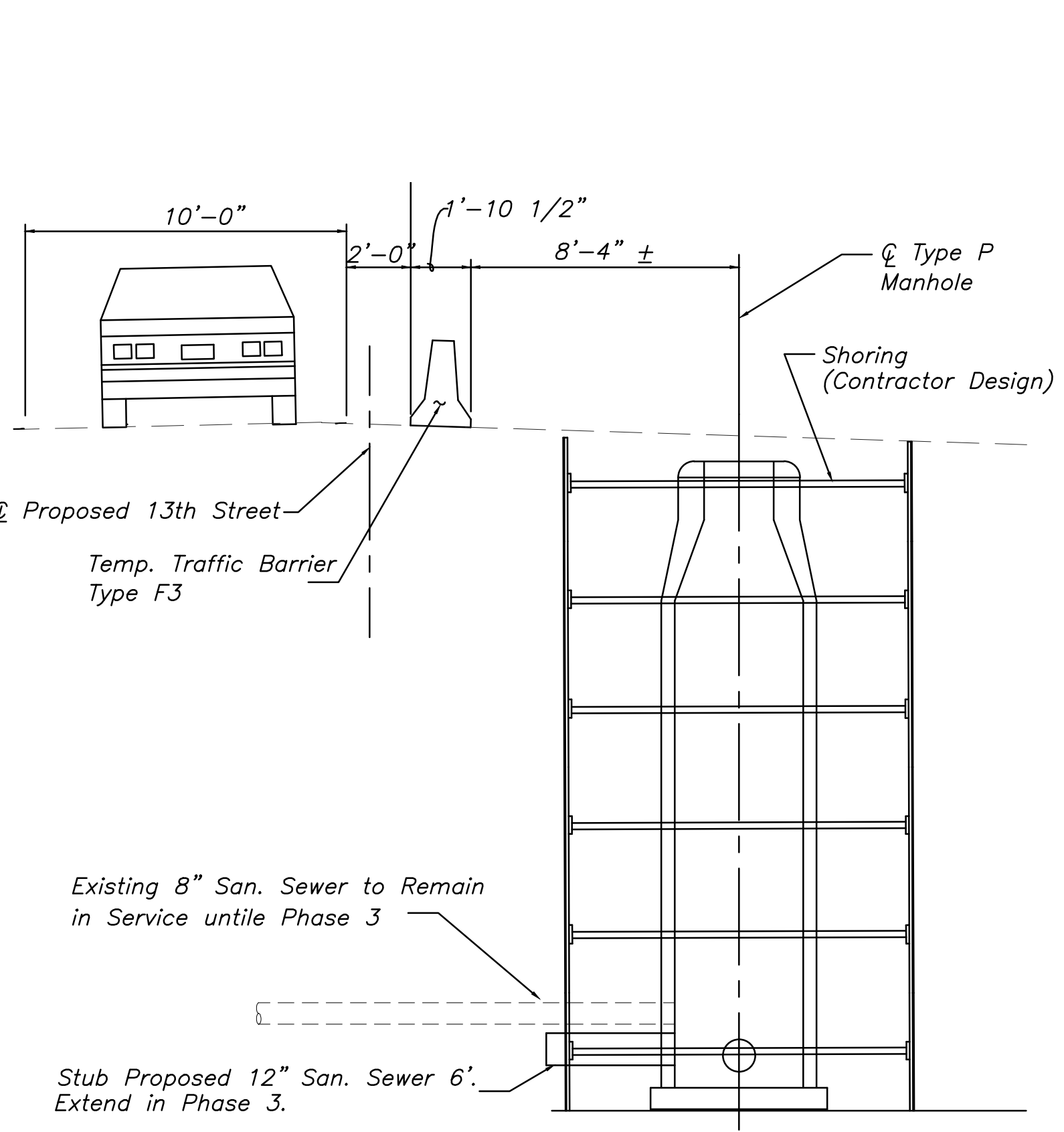


### PHASE 1 - HILLSIDE TRAFFIC CONTROL LAYOUT

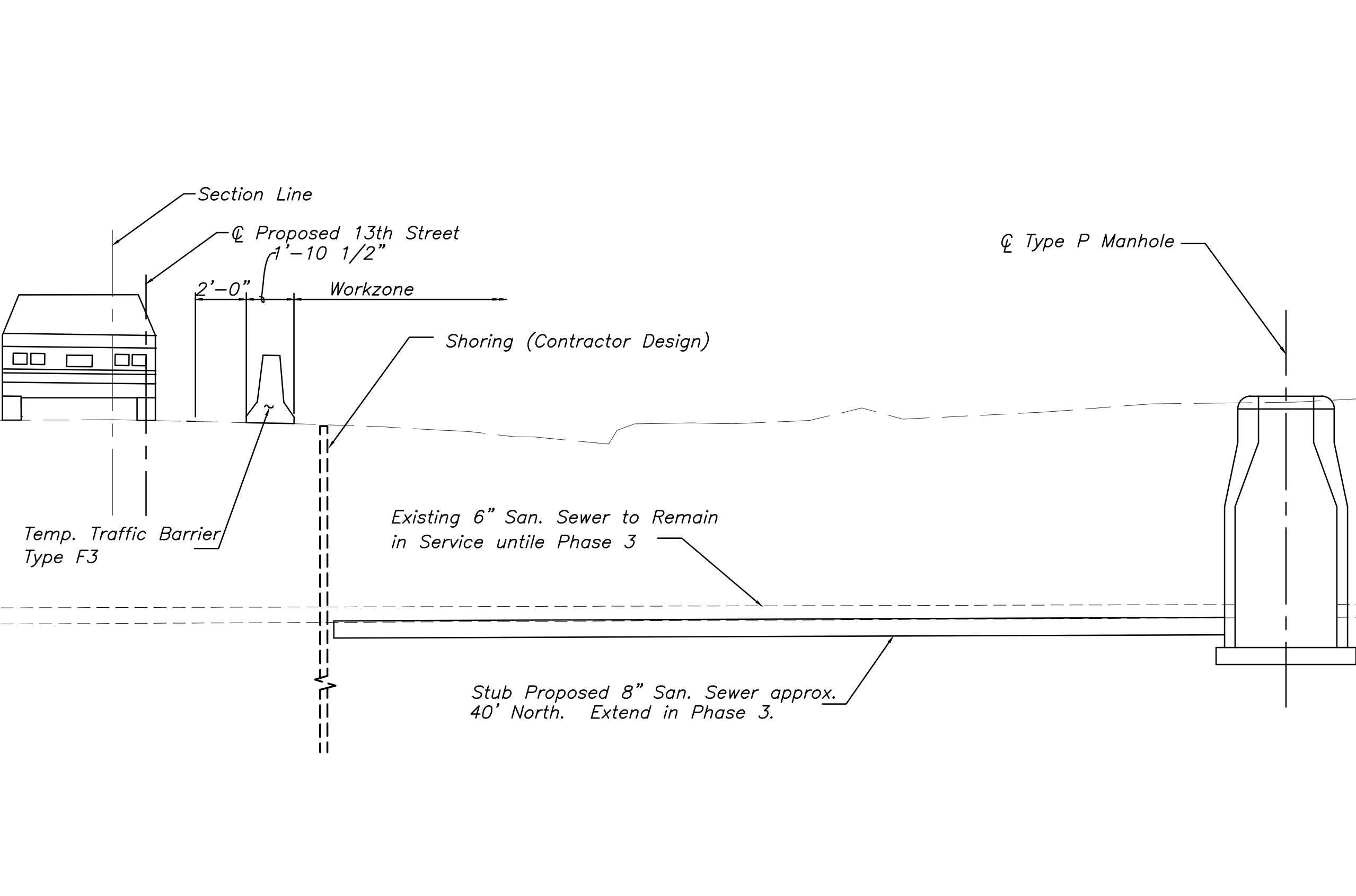
For Continuation See Sheet No. 192



STATION 1+39.00 - LOOKING EAST  
1/4" = 1'-0"



STATION 79+71.26 - LOOKING EAST  
1/4" = 1'-0"



STATION 89+95.22 - LOOKING EAST  
1/4" = 1'-0"

No.	Date	By	Approved	Revision

13TH STREET NORTH FROM KANSAS TO OLIVER  
TRAFFIC CONTROL - PHASE I  
CITY OF WICHITA, KANSAS

POE & ASSOCIATES, INC.  
CONSULTING ENGINEERS  
5940 E. Central, Suite 200 • Wichita, KS 67208-4242  
Phone 316/685-4114 • FAX 316/685-4444

Engineer: P. FERGUSON  
Designer: P. FERGUSON  
CITY Job No.: 472-84320  
Date: March, 2012

Sheet 194 of 374