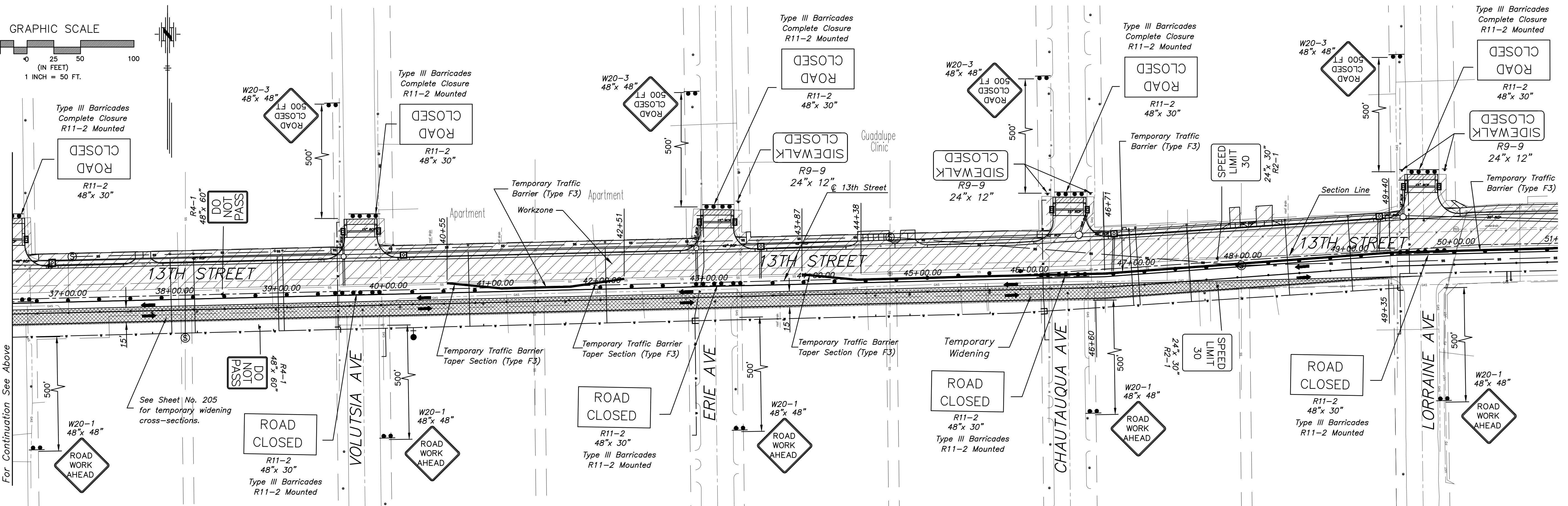
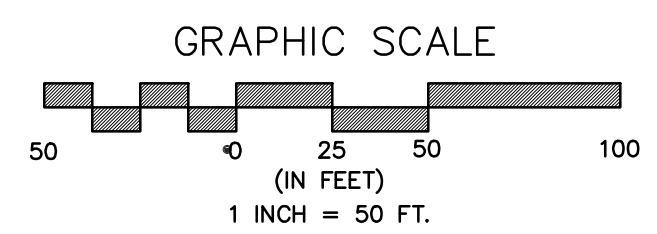


Grove Traffic Control - Phase 2
See Sheet No. 200 for Phase 2A and 2B

PHASE 2 - SPRUCE TO ESTELLE

For Continuation See Below



For Continuation See Above

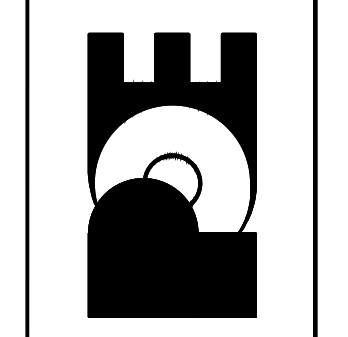
See Sheet No. 205 for temporary widening cross-sections.

PHASE 2 - ESTELLE TO LORRAINE

No.	Date	By	Approved	Revision

13TH STREET NORTH FROM KANSAS TO OLIVER
TRAFFIC CONTROL - PHASE 2
CITY OF WICHITA, KANSAS

POE & ASSOCIATES, INC.
CONSULTING ENGINEERS
5940 E. Central, Suite 200 • Wichita, KS 67208-4242
Phone 316/685-4114 • FAX 316/685-4444



Engineer: P. FERUGSON
Designer: P. FERUGSON
CITY Job No.: 472-84320
Poe Job No.: 1871
Date: March, 2012