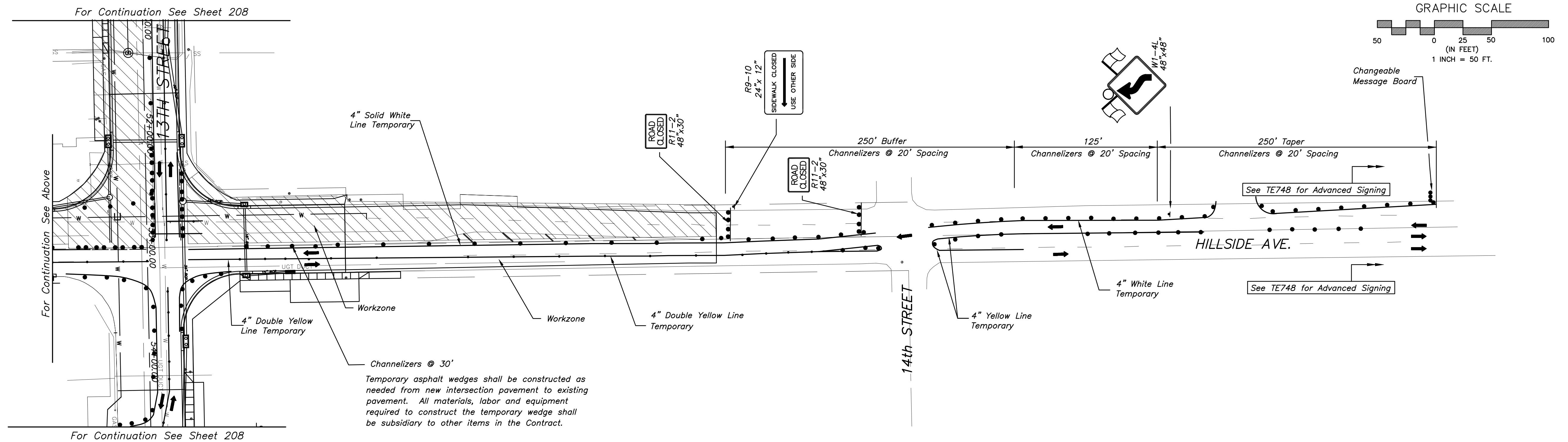


HILLSIDE PHASE 3

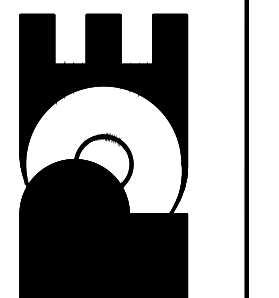


HILLSIDE PHASE 3

No.	Date	By	Approved	Revision

13TH STREET NORTH FROM KANSAS TO OLIVER
 TRAFFIC CONTROL - PHASE 3
 CITY OF WICHITA, KANSAS

POE & ASSOCIATES, INC.
 CONSULTING ENGINEERS
 5940 E. Central, Suite 200 • Wichita, KS 67208-4242
 Phone 316/685-4114 • FAX 316/685-4444



FINAL
 Engineer: P. FERGUSON
 Designer: P. FERGUSON
 CITY Job No.: 472-84320
 Date: March, 2012
 PoE Job No.: 1871