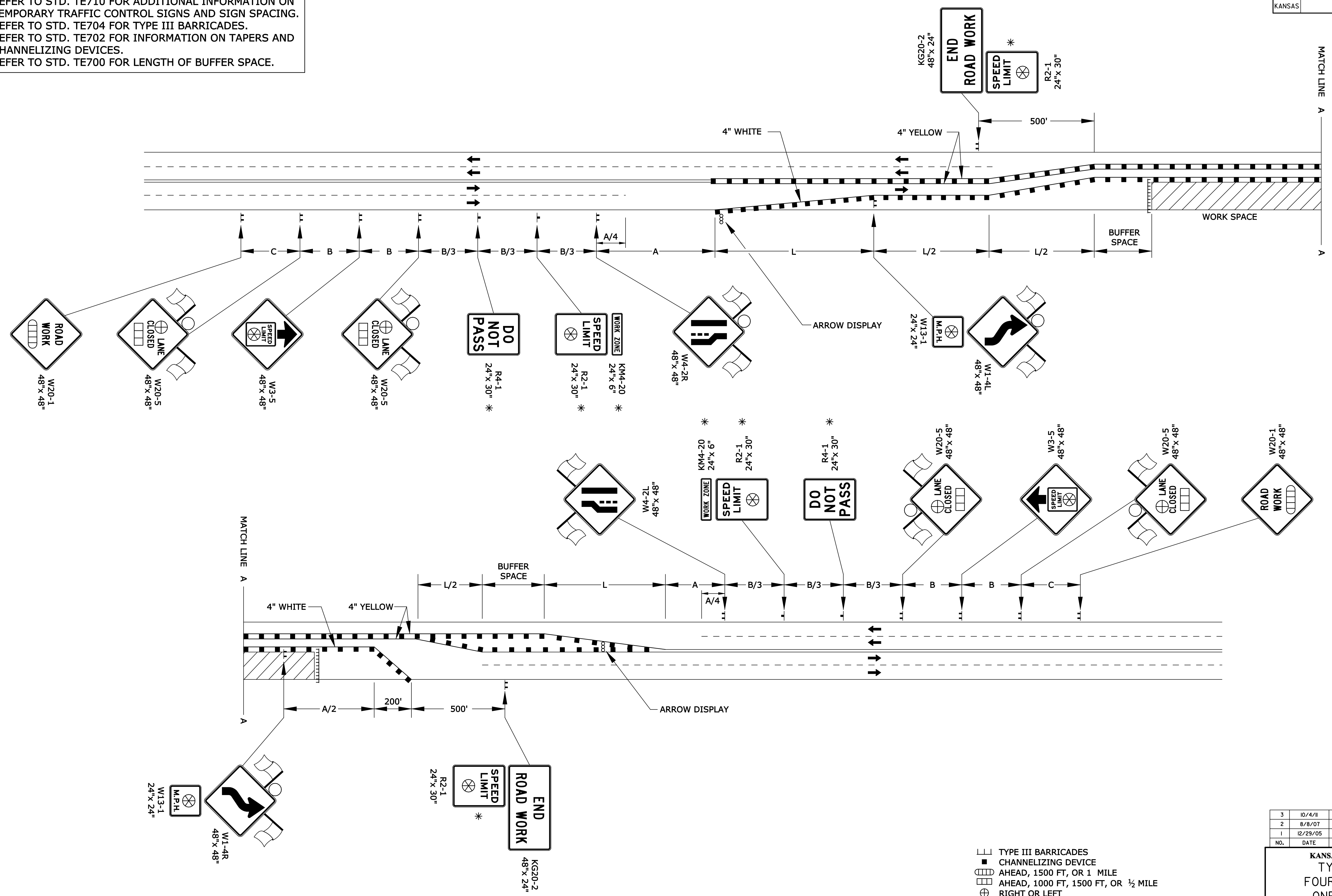


STATE	PROJECT NO.	YEAR	SHEET NO.	TOTAL SHEETS
KANSAS	472-84320	2012	225	374

REFER TO STD. TE710 FOR ADDITIONAL INFORMATION ON TEMPORARY TRAFFIC CONTROL SIGNS AND SIGN SPACING. REFER TO STD. TE704 FOR TYPE III BARRICADES. REFER TO STD. TE702 FOR INFORMATION ON TAPERS AND CHANNELIZING DEVICES. REFER TO STD. TE700 FOR LENGTH OF BUFFER SPACE.



Drawn By: \$\$USERNAME\$\$ Plotted: \$\$SYTIME\$\$  
File: \$\$DGN\$PEC\$\$

- ||| TYPE III BARRICADES
- CHANNELIZING DEVICE
- ▲ AHEAD, 1500 FT, OR 1 MILE
- ▲ AHEAD, 1000 FT, 1500 FT, OR 1/2 MILE
- ⊕ RIGHT OR LEFT
- ⊗ SPEED TO BE DETERMINED BY THE ENGINEER
- TYPE "A" LOW INTENSITY WARNING LIGHT

\* FOR SPEEDS GREATER THAN 45 MPH USE FREEWAY / EXPRESSWAY SIZE SIGNS.

3	10/4/11	Adjusted R2-1 and KM4-20 Sign Sizes	J.A.M.	K.P.
2	8/8/07	Sign Spacing Change	M.B.	A.A.A.
1	12/29/05	M4-20 Changed to KM4-20	M.B.	A.A.A.
NO.	DATE	REVISIONS	BY	APP'D

**KANSAS DEPARTMENT OF TRANSPORTATION**  
TYPICAL TRAFFIC CONTROL  
FOUR-LANE UNDIVIDED HIGHWAY  
ONE-HALF ROADWAY CLOSED

TE748 9/1/00

FHWA APPROVAL	10/4/11	APP'D	Kristina Pyle
DESIGNED	B.A.H.	DETAILED	QUANTITIES
DESIGN CK.	DETAIL CK.	QUAN. CK.	TRACE CK.