

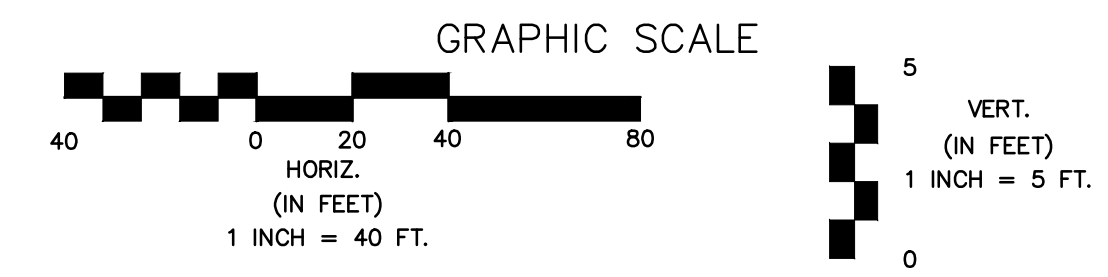
NOTES:
 1. Contractor to Field Verify location and Depth of All Utilities Prior to Construction and Report Findings to Project Engineer.

Line #	Station	Approximate Length
1	54+29.63	60 LF (Long)
1	54+31.88	80 LF (Long)
1	54+94.37	74 LF (Long)
1	55+47.22	4 LF (Short)
1	57+91.29	72 LF (Long)

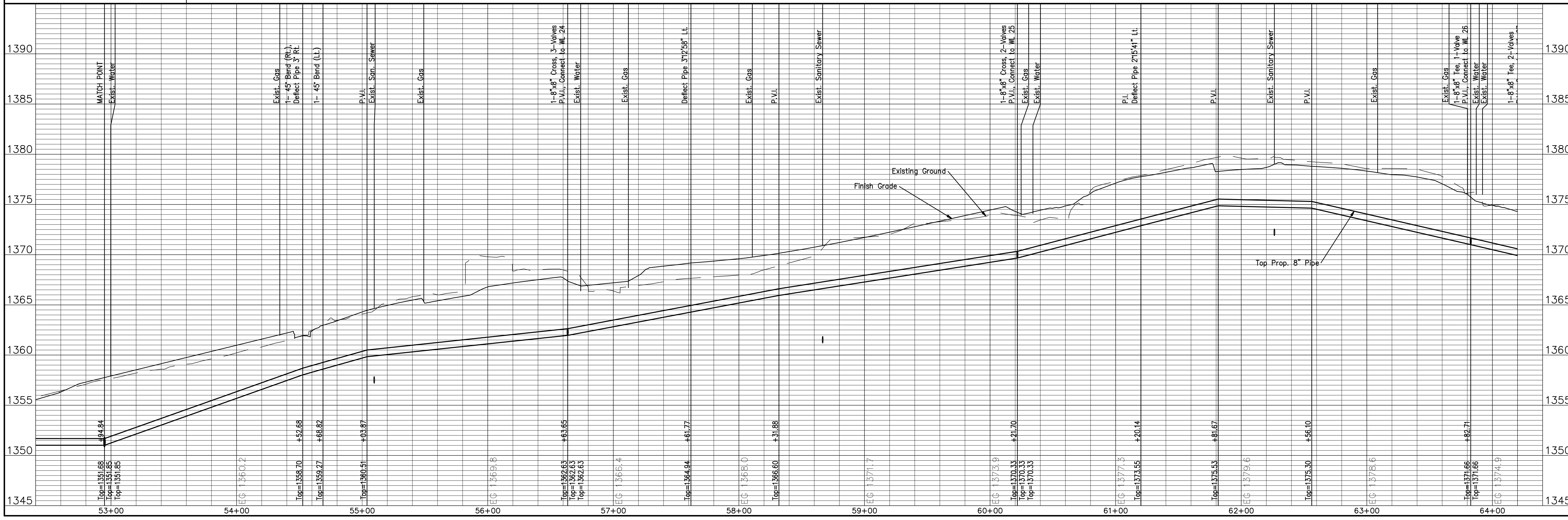
Line #	Station	Approximate Length
1	59+45.50	71 LF (Long)

LEGEND:

- Tree Removal
- Existing Building to be Removed by Others
- Water Main to be Removed or Abandon in Place
- Remove Trees Only as Needed for Construction. Cost Shall be Subsidiary to Site Clearing.



LINE NO. 1



No.	Date	By	Approved	Revision

13th STREET NORTH FROM KANSAS TO OLIVER
 WATER SUPPLY IMPROVEMENTS
 WATER PLAN & PROFILE
CITY OF WICHITA, KANSAS
 JAMES L. ARNOOR, P.E. - CITY ENGINEER
 C.O.W. Proj. # 448-90551

POE & ASSOCIATES, INC.
 CONSULTING ENGINEERS
 5940 E. Central, Suite 200 Wichita, KS 67208-4242
 Phone 316/685-4114 FAX 316/685-4444

FINAL

Engineer: J. DICKMAN
 Designer: M. TUCKER
 P.O. Job No.: 1871
 Date: MARCH 2012

Sheet
 343 of 374