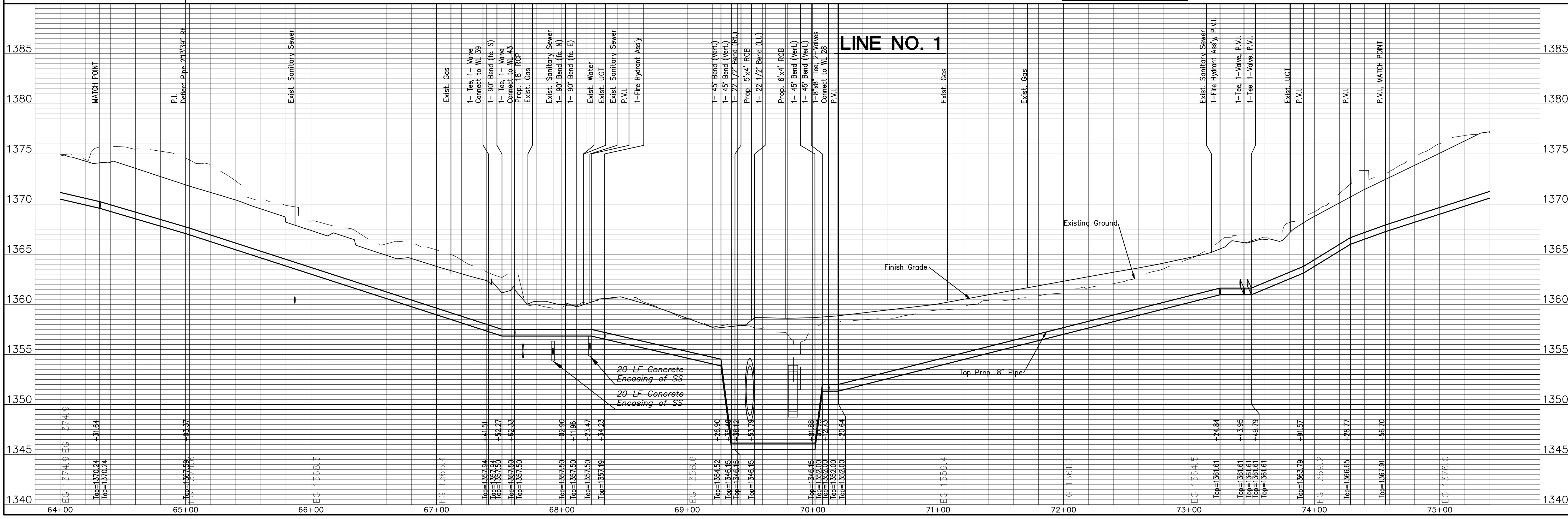
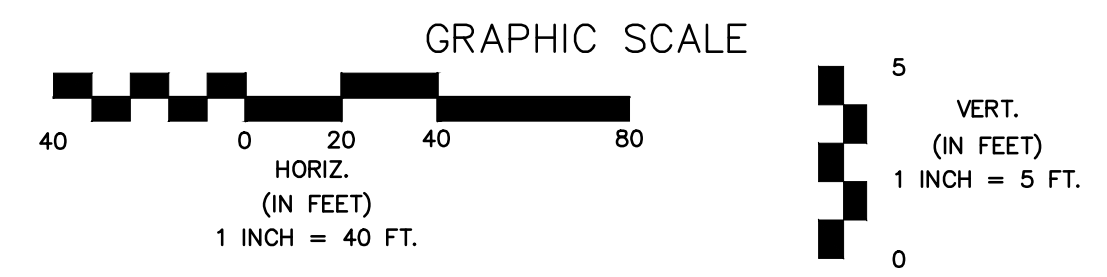
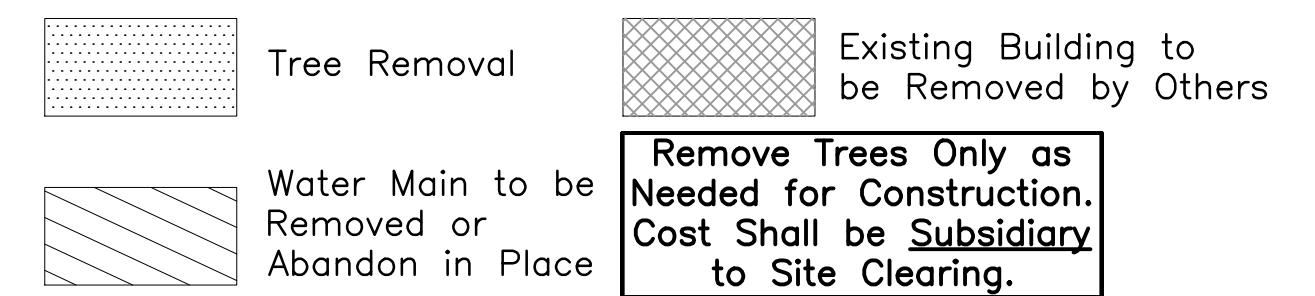


**NOTES:**  
 1. Contractor to Field Verify location and Depth of All Utilities Prior to Construction and Report Findings to Project Engineer.

Line #	Station	Approximate Length	Line #	Station	Approximate Length	Line #	Station	Approximate Length
1	65+97.86	74 LF (Long)	1	71+86.18	82 LF (Long)	1	73+30.93	82 LF (Long)
1	66+19.19	74 LF (Long)	1	72+19.70	2 LF (Short)	1	73+92.49	2 LF (Short)
1	66+88.21	74 LF (Long)	1	72+53.13	2 LF (Short)	1	74+08.84	84 LF (Long)
1	70+90.55	2 LF (Short)	1	72+54.21	81 LF (Long)	1	74+30.36	2 LF (Short)
1	71+04.84	81 LF (Long)	1	72+82.13	2 LF (Short)			

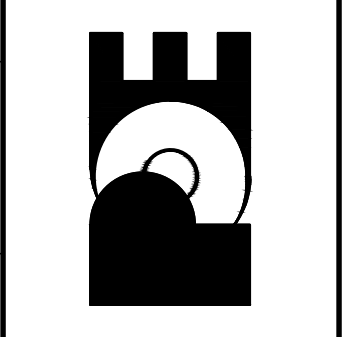
**LEGEND:**



No.	Date	By	Approved	Revision

13th STREET NORTH FROM KANSAS TO OLIVER  
 WATER SUPPLY IMPROVEMENTS  
 WATER PLAN & PROFILE  
 CITY OF WICHITA, KANSAS  
 JAMES L. ARMOUR, P.E. - CITY ENGINEER  
 C.O.W. Proj. # 448-90551 O.C.A. # 635603

POE & ASSOCIATES, INC.  
 CONSULTING ENGINEERS  
 5940 E. Central, Suite 200 Wichita, KS 67208-4242  
 Phone 316/685-4114 FAX 316/685-4444



**FINAL**  
 Engineer: J. DICKMAN  
 Designer: M. TUCKER  
 P.O. Job No.: 1871  
 Date: MARCH 2012  
 Sheet 344 of 374