

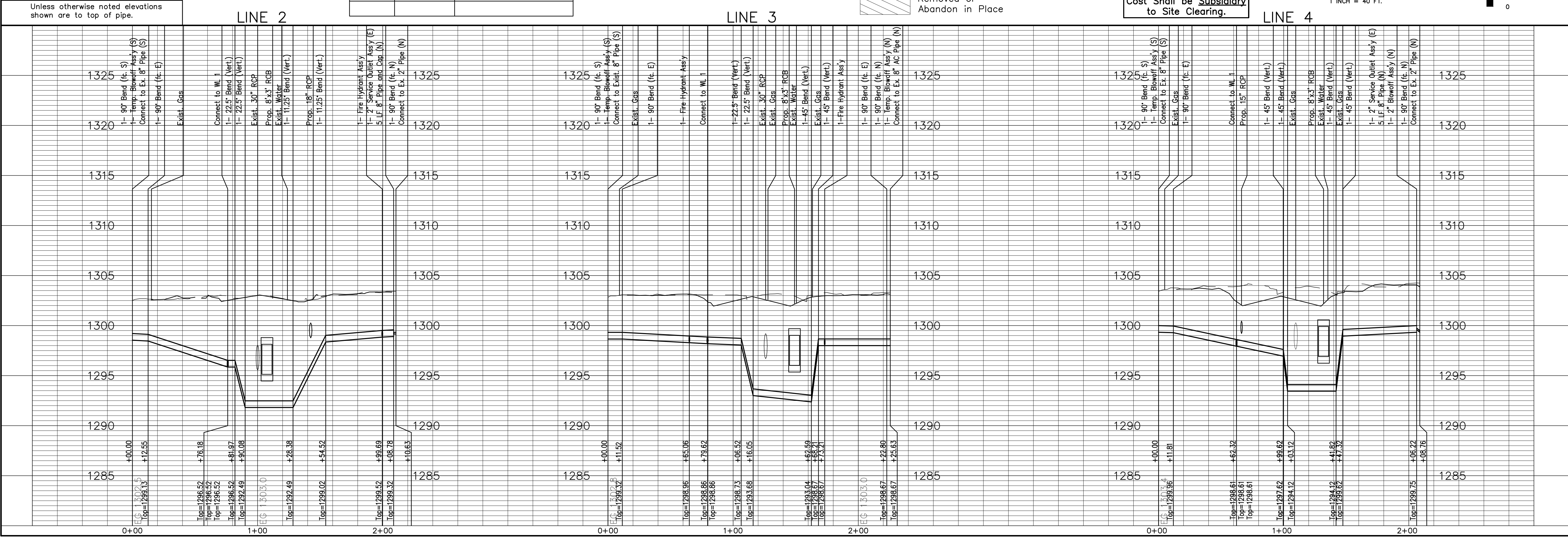
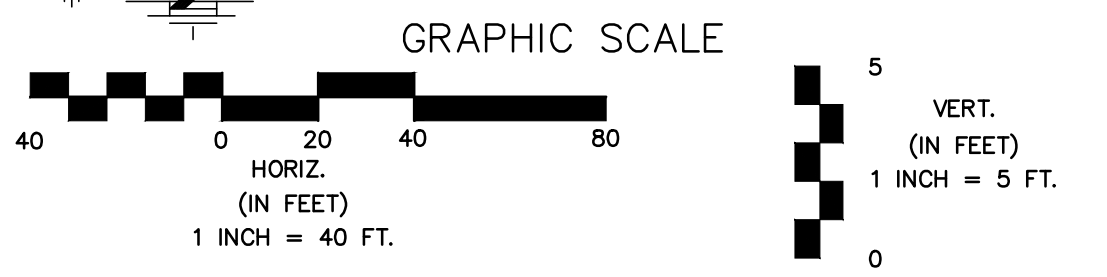
**NOTES:**  
 1. Contractor to Field Verify location and Depth of All Utilities Prior to Construction and Report Findings to Project Engineer.

Line #	Station	Approximate Length
2	0+29.36	59 LF (Long)
2	0+55.55	2 LF (Short)
2	2+03.78	2 LF (Short)

**LEGEND:**

- Tree Removal
- Existing Building to be Removed by Others
- Water Main to be Removed or Abandon in Place

Remove Trees Only as Needed for Construction. Cost Shall be Subsidiary to Site Clearing.



13th STREET NORTH FROM KANSAS TO OLIVER  
 WATER SUPPLY IMPROVEMENTS  
 WATER PLAN & PROFILE  
**CITY OF WICHITA, KANSAS**  
 JAMES L. ARNDORFER, P.E. - CITY ENGINEER  
 C.O.M. Proj. # 448-90551

**POE & ASSOCIATES, INC.**  
 CONSULTING ENGINEERS  
 5940 E. Central, Suite 200 Wichita, KS 67208-4242  
 Phone 316/685-4114 FAX 316/685-4444

**FINAL**

Engineer: J. DICKMAN  
 Designer: M. TUCKER  
 Date: MARCH 2012

Sheet 348 of 374