

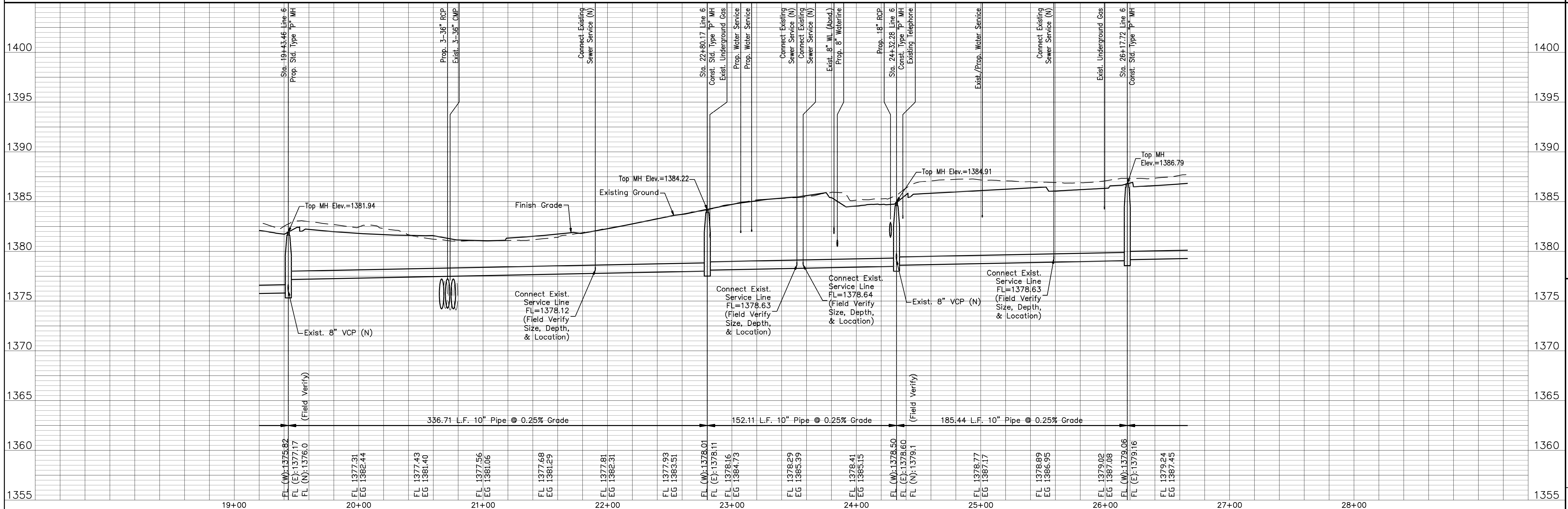
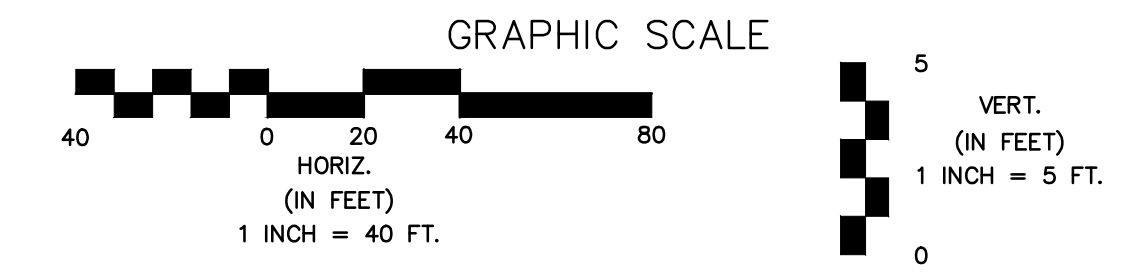
**NOTES:**  
 1. Contractor to Field Verify location and Depth of All Utilities Prior to Construction and Report Findings to Project Engineer.

Remove Trees Only as Needed for Construction. Cost Shall be Subsidiary to Site Clearing.

**LINE #6 Cont. and #6B**

**LEGEND**

- Sanitary Sewer to be Abandoned in Place or Removed as Noted in Plan
- Existing Building to be Removed by Others



13TH STREET NORTH FROM HYDRAULIC TO OLIVER  
 SANITARY SEWER EXTENSIONS  
 LINE NO. 6 CONTINUED & 6B  
 CITY OF WICHITA, KANSAS  
 JAMES L. ARMOUR, P.E. - CITY ENGINEER  
 C.O.W. Proj. No. 466-84816 OCA No. 7624100

**POE & ASSOCIATES, INC.**  
 CONSULTING ENGINEERS  
 5940 E. Central, Suite 200 ■ Wichita, KS 67208-0242  
 Phone 316/685-4114 ■ FAX 316/685-4444

**FINAL**

Designed By: J. DICKMAN  
 Drawn By: M. TUCKER  
 P.O. Job No.: 1871A  
 Date: March 2012

368 of 374