

Note: Encasement to begin and end at a Bell on Sanitary Sewer Pipe.

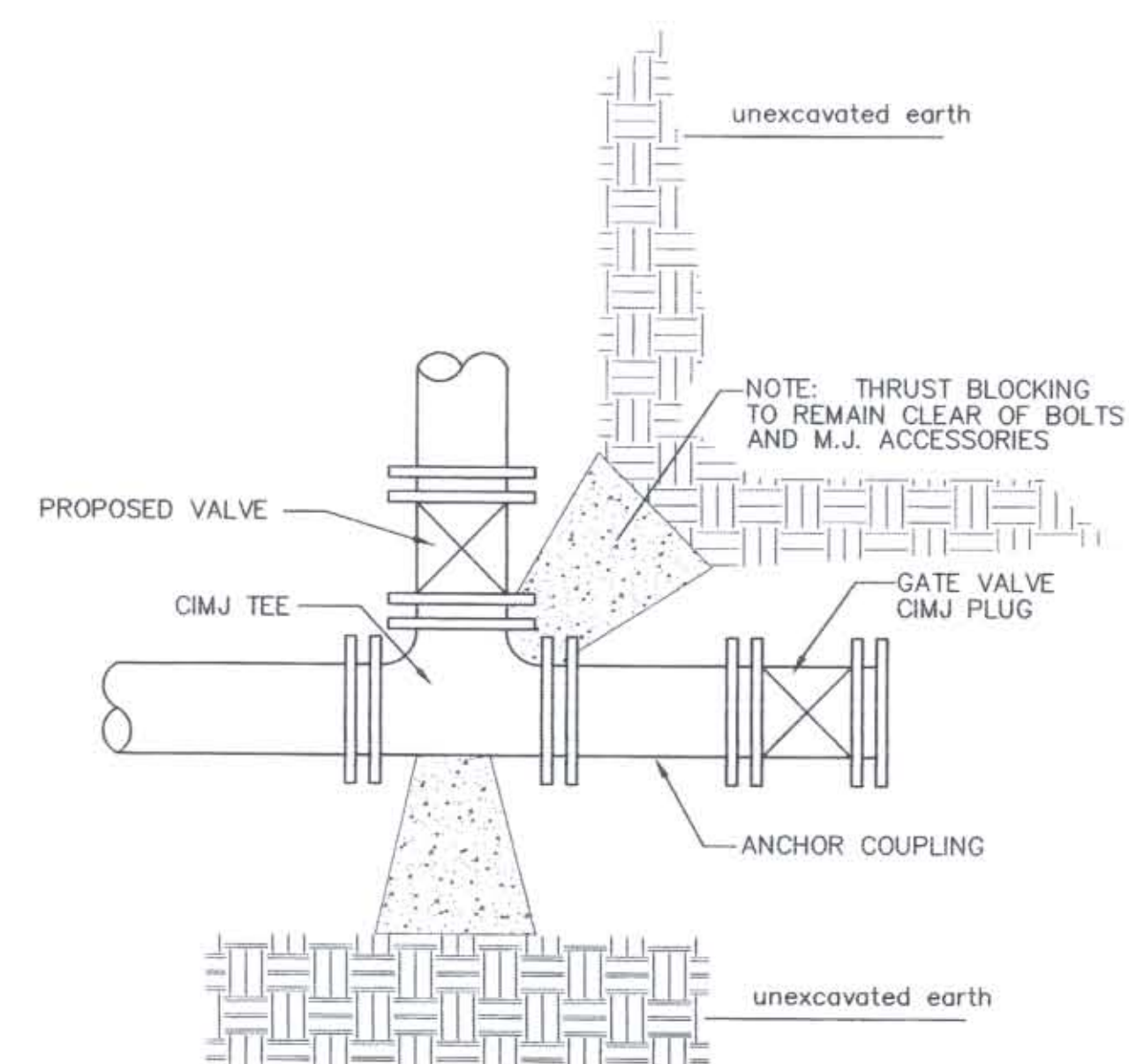
SECTION B-B

REINFORCED CONCRETE ENCASEMENT OF SANITARY SEWER

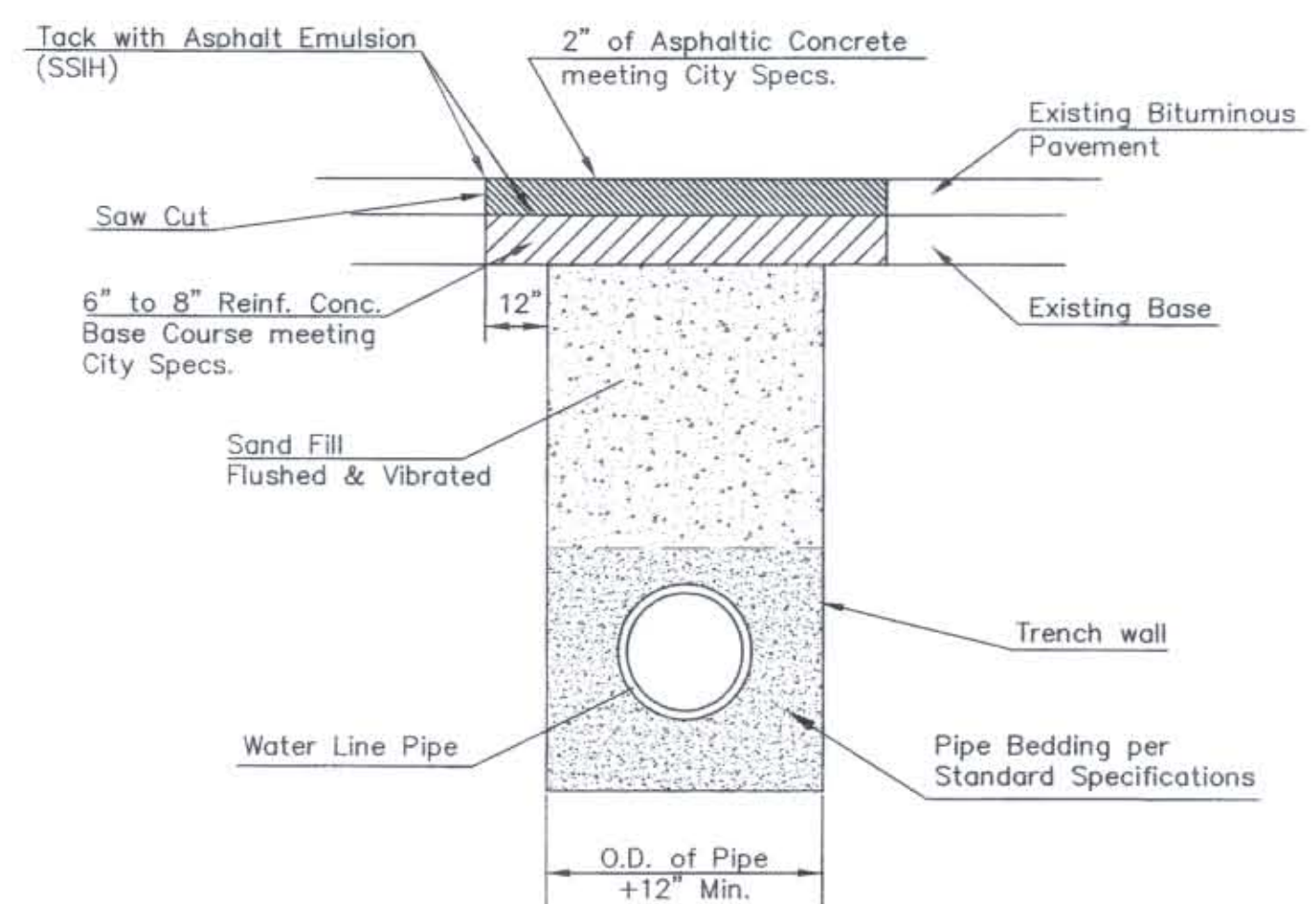
PIPE SIZE	THRUST AT FITTINGS IN TONS--AT 150#/IN ² P					
	PLUG	90°	45°	22 1/2°	11 1/4°	TEE
6"	2.8	3.95	2.15	1.09	.55	2.8
8"	4.9	6.95	3.75	1.90	.96	4.9
12"	11.4	16.1	8.75	4.45	2.25	11.4
16"	20.15	28.5	15.4	7.85	3.95	20.15
20"	31.15	44.0	23.85	12.15	6.10	31.15
24"	44.55	63.0	34.1	17.4	8.75	44.55

TYPICAL THRUST BLOCKS

TRENCH COMPACTION IN ROAD RIGHT-OF-WAY



KEY BLOCK DETAIL



PAVEMENT REPLACEMENT & TRENCH COMPACTION UNDER EXISTING AND PROPOSED CITY ROADS

* UNLESS OTHERWISE NOTED ON PLANS

MISCELLANEOUS WATER DETAILS

INTERIM CITY ENGINEER
GARY JANZEN, P.E.

PROJECT NUMBER 1664 PPW	OCA NUMBER (607853)	DATE 01/2012
----------------------------	------------------------	-----------------

CITY ENGINEER'S OFFICE
CITY HALL - SEVENTH FLOOR
455 NORTH MAIN STREET
WICHITA, KANSAS 67202-1620
(316) 268-4501

SHEET
5 of 10

Saved: 06-10-2012 8:21:05 AM by RFT
 P:\03\06\12\15-2012_11-23-09 PM by RFT
 2/20/12 12:18:12 PM - 12-10-12 Miscellaneous Water Details