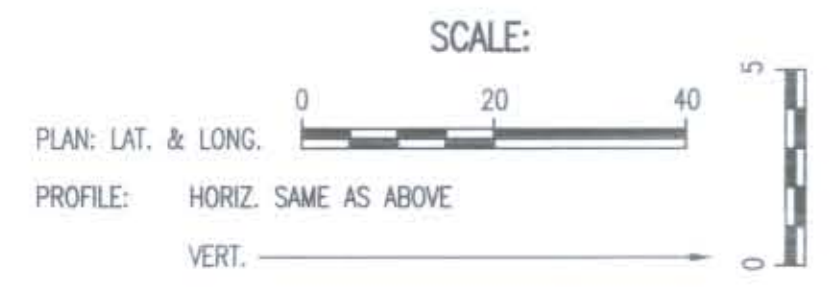
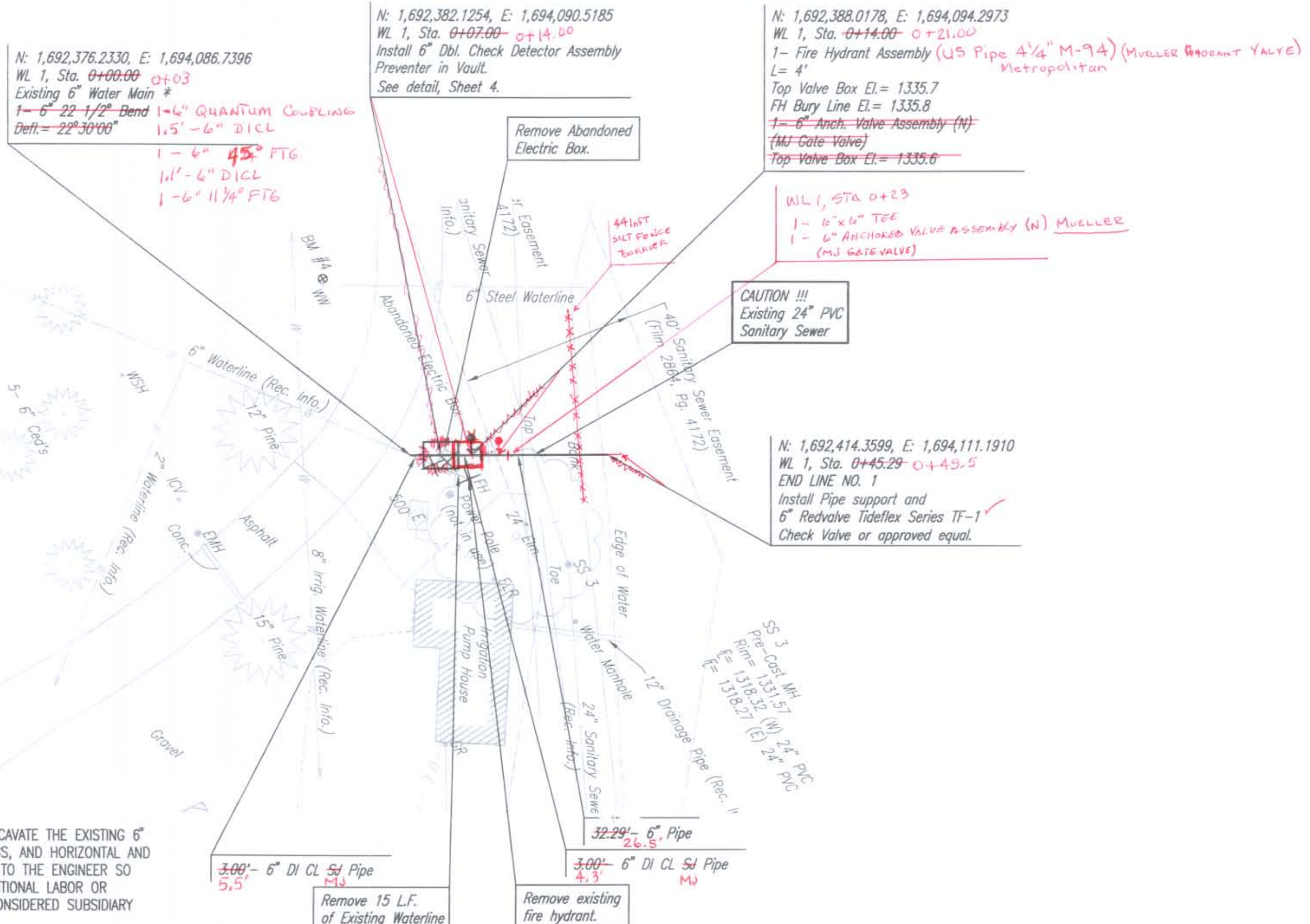


PLAN	CHECKED	CHECKED
BY		
DATE		

PROFILE	CHECKED	CHECKED
BY		
DATE		

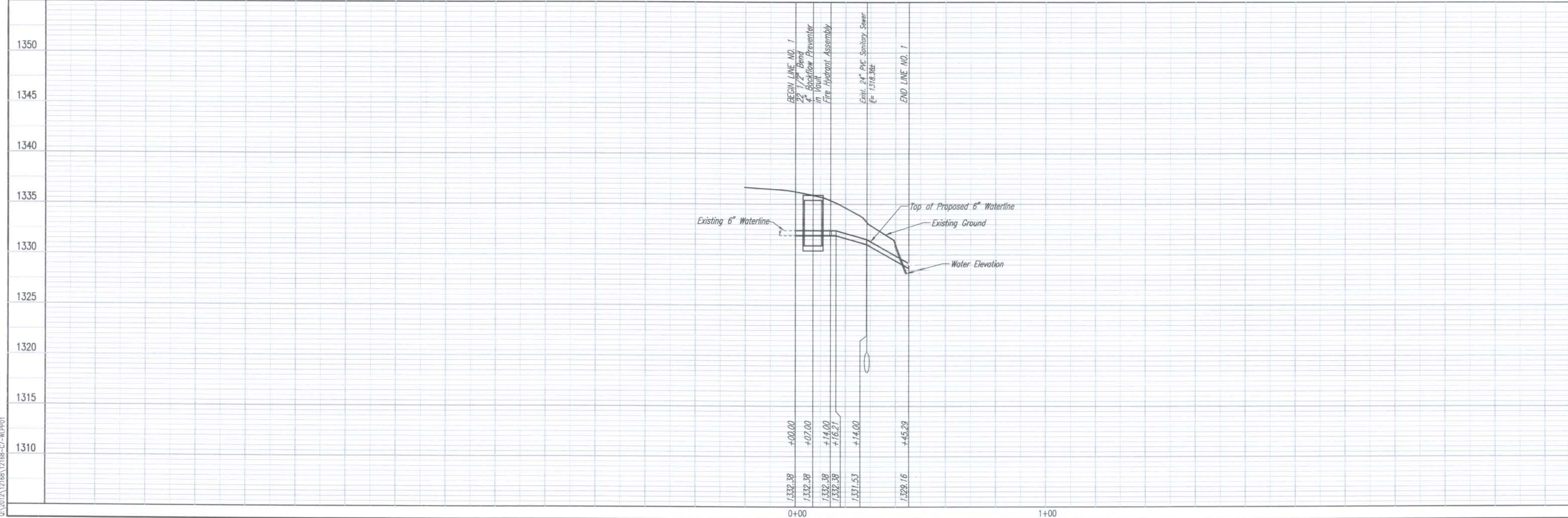
Saved: 05-15-2012 11:13:35 PM by RT
 Plot Scale: 1:20 05-15-2012 11:27:31 PM by BEI
 G:\2012\12168\12168-C7-WP101



✕ - Denotes Waterline and Structures to be removed.



* PRIOR TO BEGINNING CONSTRUCTION, THE CONTRACTOR SHALL EXCAVATE THE EXISTING 6" WATERLINE AT STATION 0+00.00 TO VERIFY PIPE SIZE, TYPE, FITTINGS, AND HORIZONTAL AND VERTICAL LOCATION. THE CONTRACTOR SHALL REPORT HIS FINDINGS TO THE ENGINEER SO THAT ANY NECESSARY PLAN MODIFICATIONS CAN BE MADE. ANY ADDITIONAL LABOR OR MATERIALS NECESSARY TO COMPLETE THE CONNECTION SHALL BE CONSIDERED SUBSIDIARY TO THE PROJECT.



CRESTVIEW COUNTRY CLUB
 WATERLINE IMPROVEMENTS
WATERLINE NO. 1

PROFESSIONAL ENGINEERING CONSULTANTS P.A.
 303 SOUTH TOPEKA WICHITA, KS 67202
 316-262-2691 www.pec1.com

Designed By: IDK/MDK
 Drawn By: RT

Job No. 35-12168-1720
 Date: APRIL 2012

GARY JANZEN, P.E. - INTERIM CITY ENGINEER
 CITY OF WICHITA PRIVATE PROJECT NO. 1564 PPW (607583)

Sheet 7 of 10