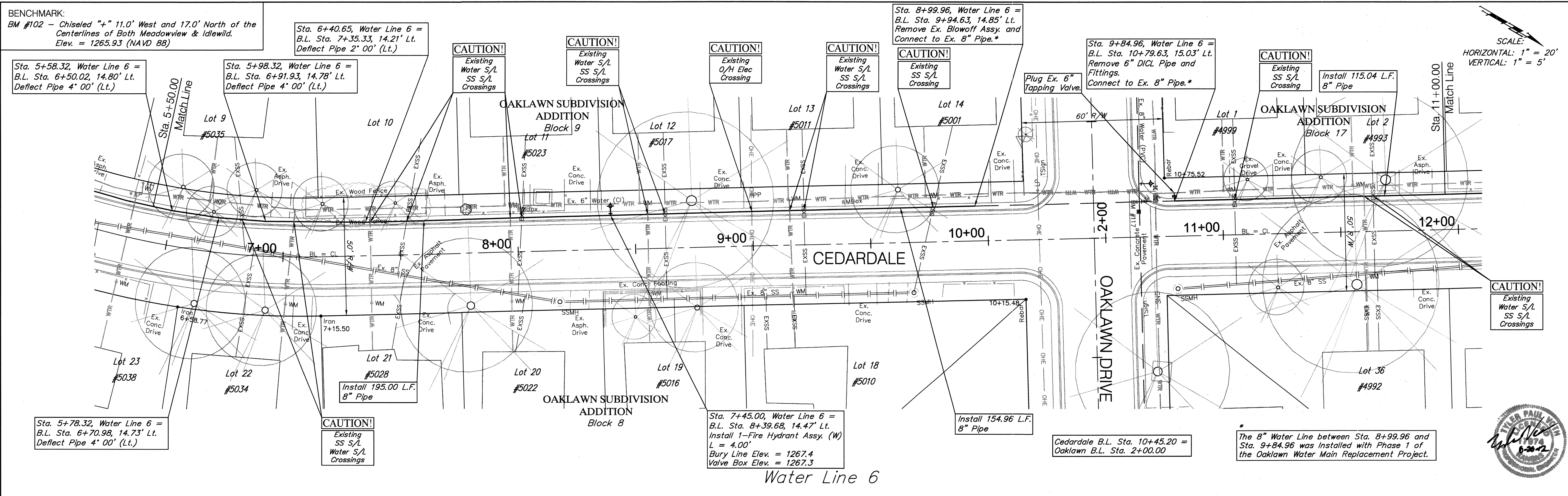


BENCHMARK:  
 BM #102 - Chiseled "+" 11.0' West and 17.0' North of the Centerlines of Both Meadowview & Idlewild.  
 Elev. = 1265.93 (NAVD 88)

SCALE:  
 HORIZONTAL: 1" = 20'  
 VERTICAL: 1" = 5'



1275	Ex. SS S/L (Verify)	1275
1270	Ex. Water S/L (Verify) Sta. 5+50.00, Water Line 6 = Match Line Sta. 5+58.32, Water Line 6 = Deflect Pipe 4' 00' (Lt.)	1270
1265	Ex. Water S/L (Verify) Sta. 5+78.32, Water Line 6 = Deflect Pipe 4' 00' (Lt.)	1265
1260	Ex. Water S/L (Verify) Sta. 5+98.32, Water Line 6 = Deflect Pipe 4' 00' (Lt.)	1260
1255	Ex. Water S/L (Verify) Sta. 6+40.65, Water Line 6 = Deflect Pipe 2' 00' (Lt.)	1255
1250	Ex. Water S/L (Verify)	1250
1245	Ex. Water S/L (Verify) Sta. 7+45.00, Water Line 6 = Install 1-Fire Hydrant Assy. (W) L = 4.00' Bury Line Elev. = 1267.4 Valve Box Elev. = 1267.3	1245
	Existing Ground @ $\phi$ of Pipe	
	Existing 8" Water Installed w/ Phase 1	
	Aband. 8" Water (Verify)	
	Sta. 8+99.96, Water Line 6 = Remove Ex. Blowoff Assy. and Connect to Ex. 8" Pipe.*	
	Sta. 9+84.96, Water Line 6 = Remove 6" DIOL Pipe and Fittings. Connect to Ex. 8" Pipe.*	
	Ex. SS S/L (Verify)	
	Ex. Water S/L (Verify) Ex. SS S/L (Verify)	
	Sta. 11+00.00, Water Line 6 = Match Line	
	Ex. Water S/L (Verify) Ex. SS S/L (Verify)	
1245	1262.84 = T.P. 1261.86 = T.P. 1261.90 = T.P. 1261.93 = T.P. 1262.01 = T.P. 1262.12 = T.P. 1262.20 = T.P. 1262.31 = T.P. 1262.50 = T.P. (Contractor Verify)	1245
	9+84.96 10+00	
	11+00.00	