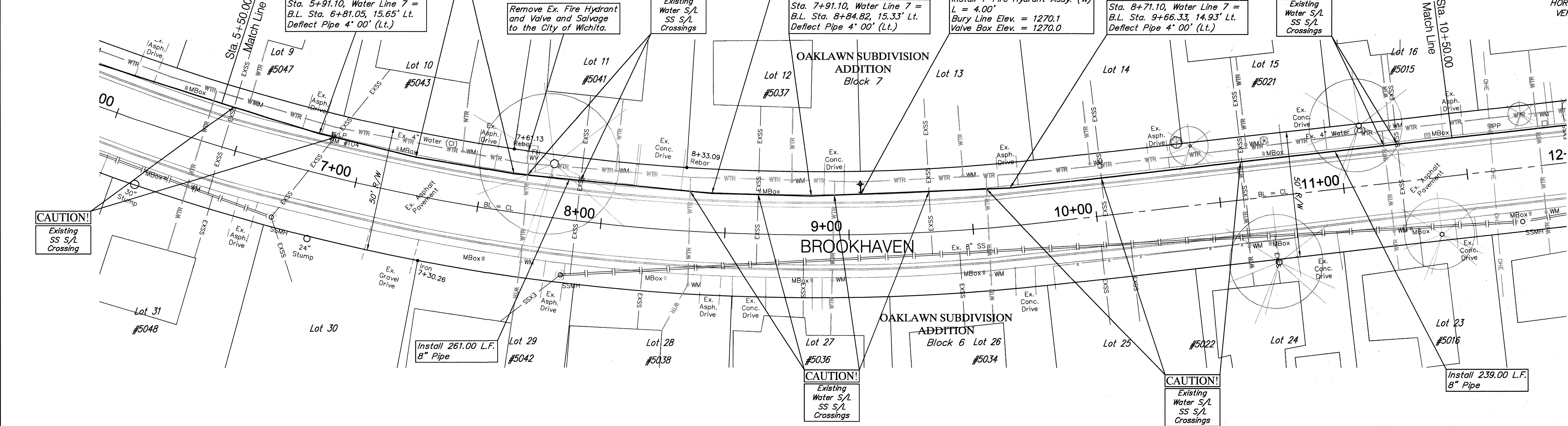
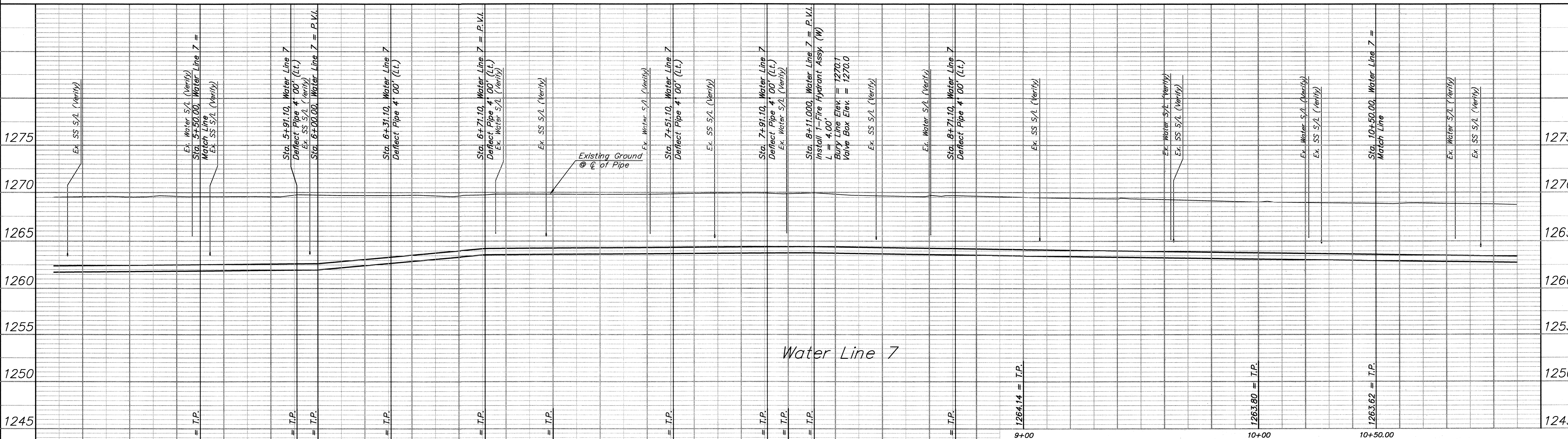


BENCHMARK:  
 BM #104 - Railroad Spike in the East Face of the Light Pole on the West Side of Brookhaven between #5047 & #5043.  
 Elev. = 1270.85 (NAVD 88)

SCALE:  
 HORIZONTAL: 1" = 20'  
 VERTICAL: 1" = 5'



Water Line 7



Water Line 7

Drawing File: E:\Projects\Oaklawn Water Main Replacement\Civil 3d\Oaklawn Base.dwg (Brookhaven 02)  
 Project No. 11-08-E654 CAPITAL IMPROVEMENT PROJECT  
**BROOKHAVEN WATER PLAN & PROFILE**  
 Water Line 7, Sta. 5+50.00 to Sta. 10+50.00  
 OAKLAWN WATER MAIN REPLACEMENT - PHASE I

Design: TPV  
 Drawn: STAFF  
 Approved: TPV  
 Scale: NOTED

**Baughman Company, P.A.**  
 315 Ellis St. Wichita, KS 67241 P 316-262-7271 F 316-262-0149  
 ENGINEERING | SURVEYING | PLANNING | LANDSCAPE ARCHITECTURE

June 2012  
 SHEET 9 OF 37