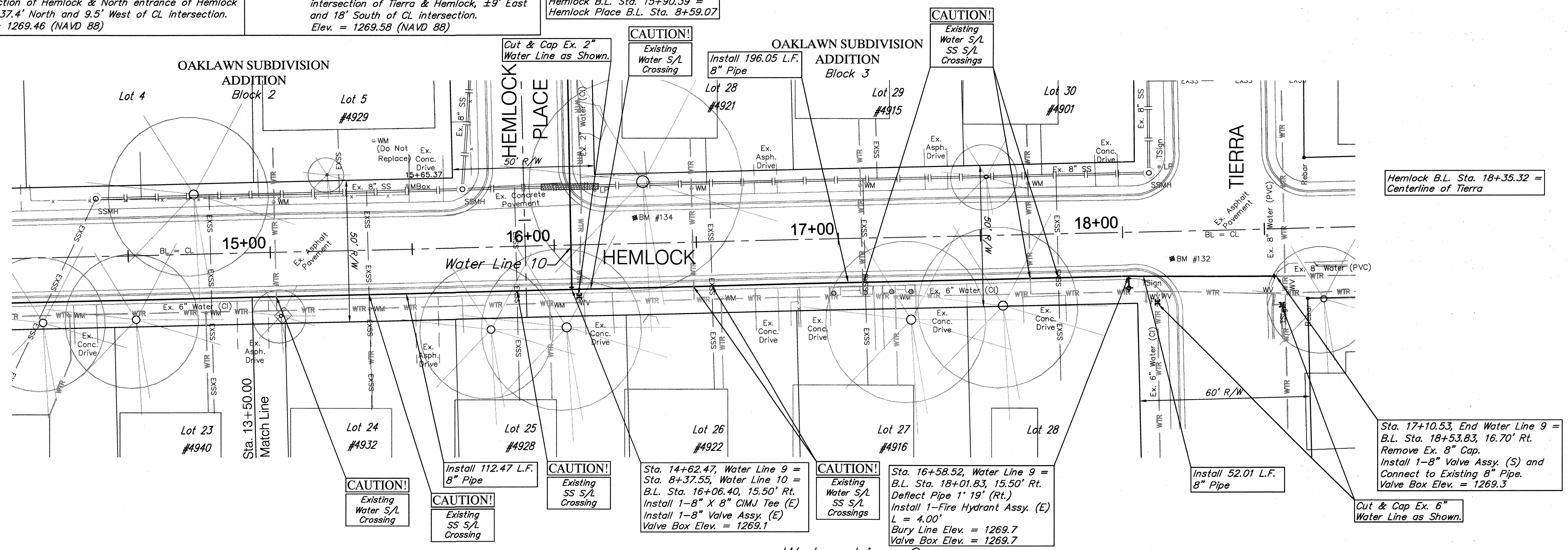


BENCHMARK:
 BM #134 - Magnail/washer in asphalt at NW corner of intersection of Hemlock & North entrance of Hemlock Place, 37.4' North and 9.5' West of CL intersection. Elev. = 1269.46 (NAVD 88)

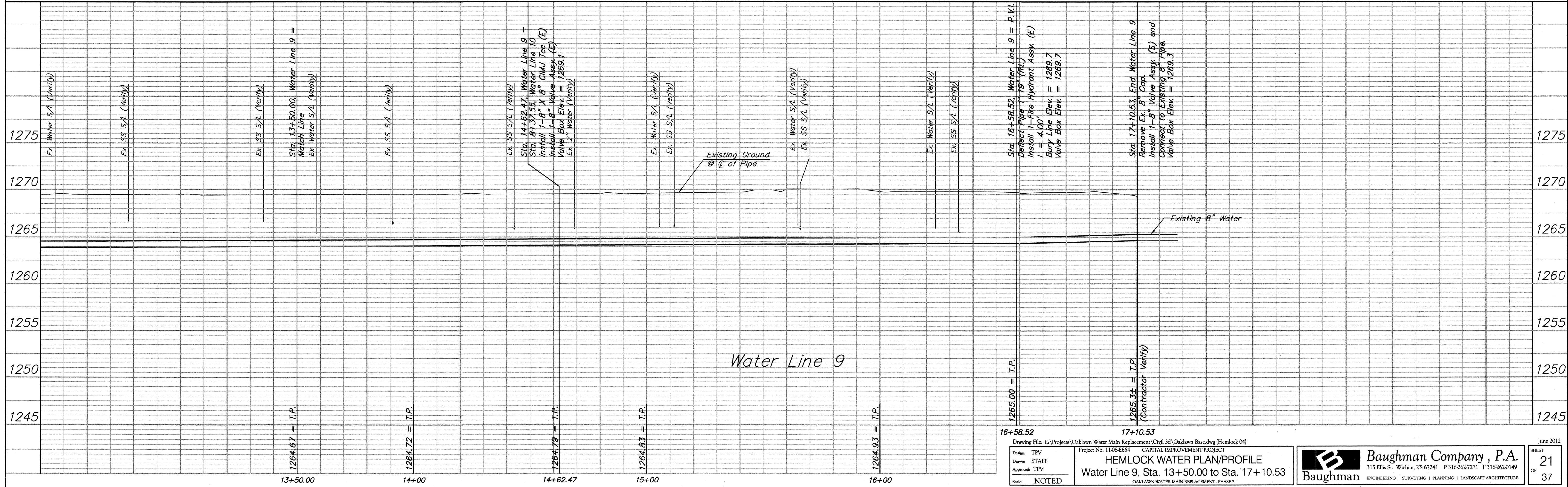
BENCHMARK:
 BM #132 - Magnail/washer in asphalt at SE corner of intersection of Terra & Hemlock, ±9' East and 18' South of CL intersection. Elev. = 1269.58 (NAVD 88)

Hemlock B.L. Sta. 15+90.39 = Hemlock Place B.L. Sta. 8+59.07

SCALE:
 HORIZONTAL: 1" = 20'
 VERTICAL: 1" = 5'



Water Line 9



Water Line 9

16+58.52
 Drawing File: E:\Projects\Oaklawn Water Main Replacement\Civil 3d\Oaklawn Base.dwg (Hemlock 04)
 Project No. 11-08-EG54 CAPITAL IMPROVEMENT PROJECT
 Design: TPV
 Drawn: STAFF
 Approved: TPV
 Scale: NOTED

17+10.53
 1265.00 = T.P.
 1265.34 = T.P. (Contractor Verify)

HEMLOCK WATER PLAN/PROFILE
 Water Line 9, Sta. 13+50.00 to Sta. 17+10.53
 OAKLAWN WATER MAIN REPLACEMENT - PHASE 2

Baughman Company, P.A.
 315 Ellis St. Wichita, KS 67241 P 316-262-7271 F 316-262-0149
 ENGINEERING | SURVEYING | PLANNING | LANDSCAPE ARCHITECTURE

June 2012
 SHEET 21 OF 37

