

BENCHMARK:  
 BM #133 - Magnail/washer in asphalt at SW corner of intersection of Hemlock & South entrance of Hemlock Place, 11' South and 11' West of CL intersection.  
 Elev. = 1268.94 (NAVD 88)

Sta. 0+95.52, Water Line 10 =  
 B.L. Sta. 1+76.40, 12.00' Lt.  
 Install 1-8" 22.5° CIMJ Bend (Rt.)

Sta. 1+23.31, Water Line 10 =  
 B.L. Sta. 1+99.82, 15.39' Lt.  
 Install 1-8" 22.5° CIMJ Bend (Rt.)

CAUTION!  
 Existing SS S/L Crossing

Sta. 1+33.31, Water Line 10 =  
 B.L. Sta. 2+08.14, 14.78' Lt.  
 Deflect Pipe 4' 00" (Rt.)

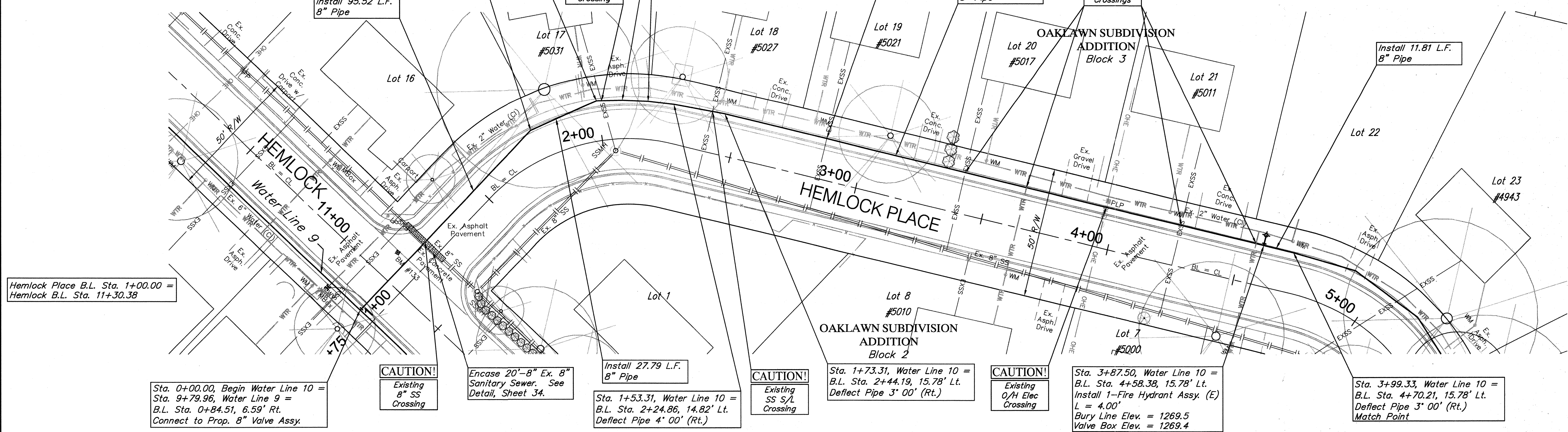
CAUTION!  
 Existing SS S/L Crossing

Install 264.19 L.F. 8" Pipe

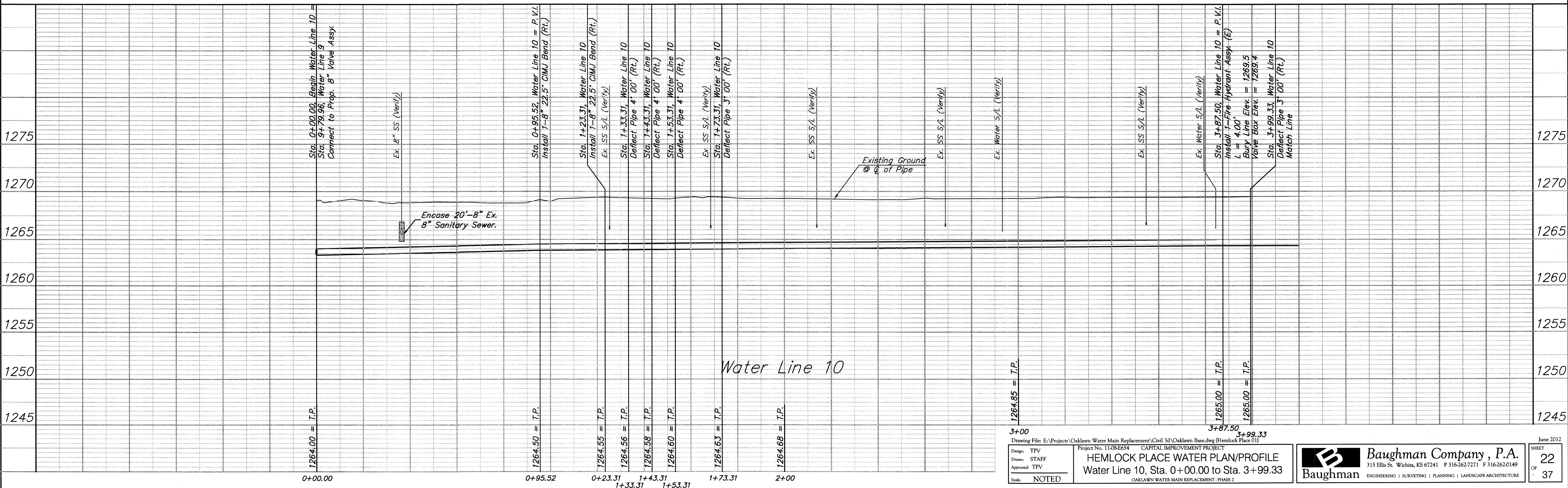
CAUTION!  
 Existing SS S/L Water S/L Crossings

Install 11.81 L.F. 8" Pipe

SCALE:  
 HORIZONTAL: 1" = 20'  
 VERTICAL: 1" = 5'



Water Line 10



3+00  
 3+87.50  
 3+99.33  
 Drawing File: E:\Projects\Oaklawn Water Main Replacement\Civil 3d\Oaklawn Base.dwg (Hemlock Place 01)  
 Design: TPV  
 Drawn: STAFF  
 Approved: TPV  
 Scale: NOTED  
 Project No. 11-08-E654 CAPITAL IMPROVEMENT PROJECT  
**HEMLOCK PLACE WATER PLAN/PROFILE**  
 Water Line 10, Sta. 0+00.00 to Sta. 3+99.33  
 OAKLAWN WATER MAIN REPLACEMENT - PHASE 2

**Baughman Company, P.A.**  
 315 Ellis St. Wichita, KS 67241 P 316-262-7271 F 316-262-0149  
 ENGINEERING | SURVEYING | PLANNING | LANDSCAPE ARCHITECTURE

June 2012  
 SHEET  
**22**  
 OF  
 37