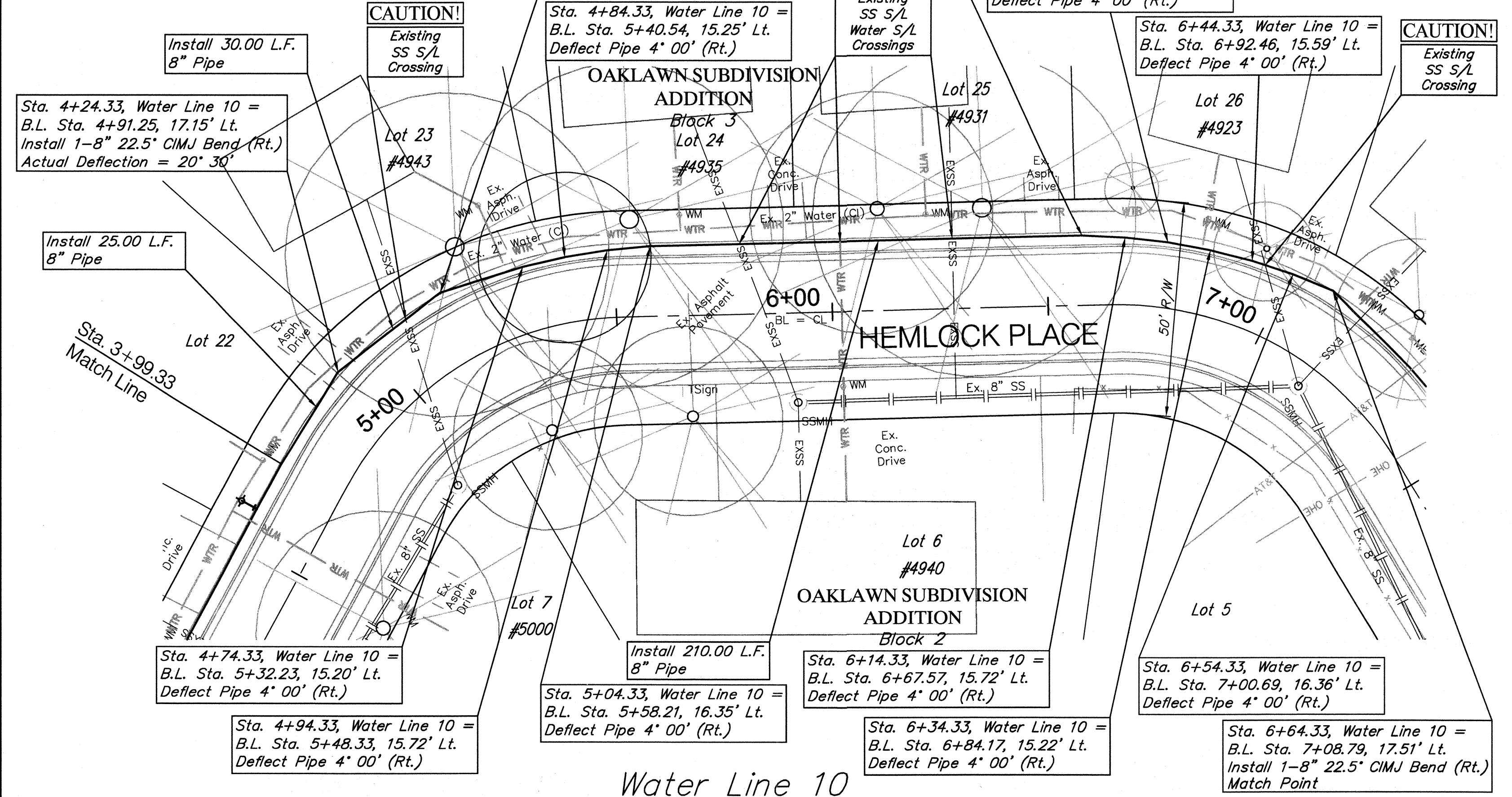
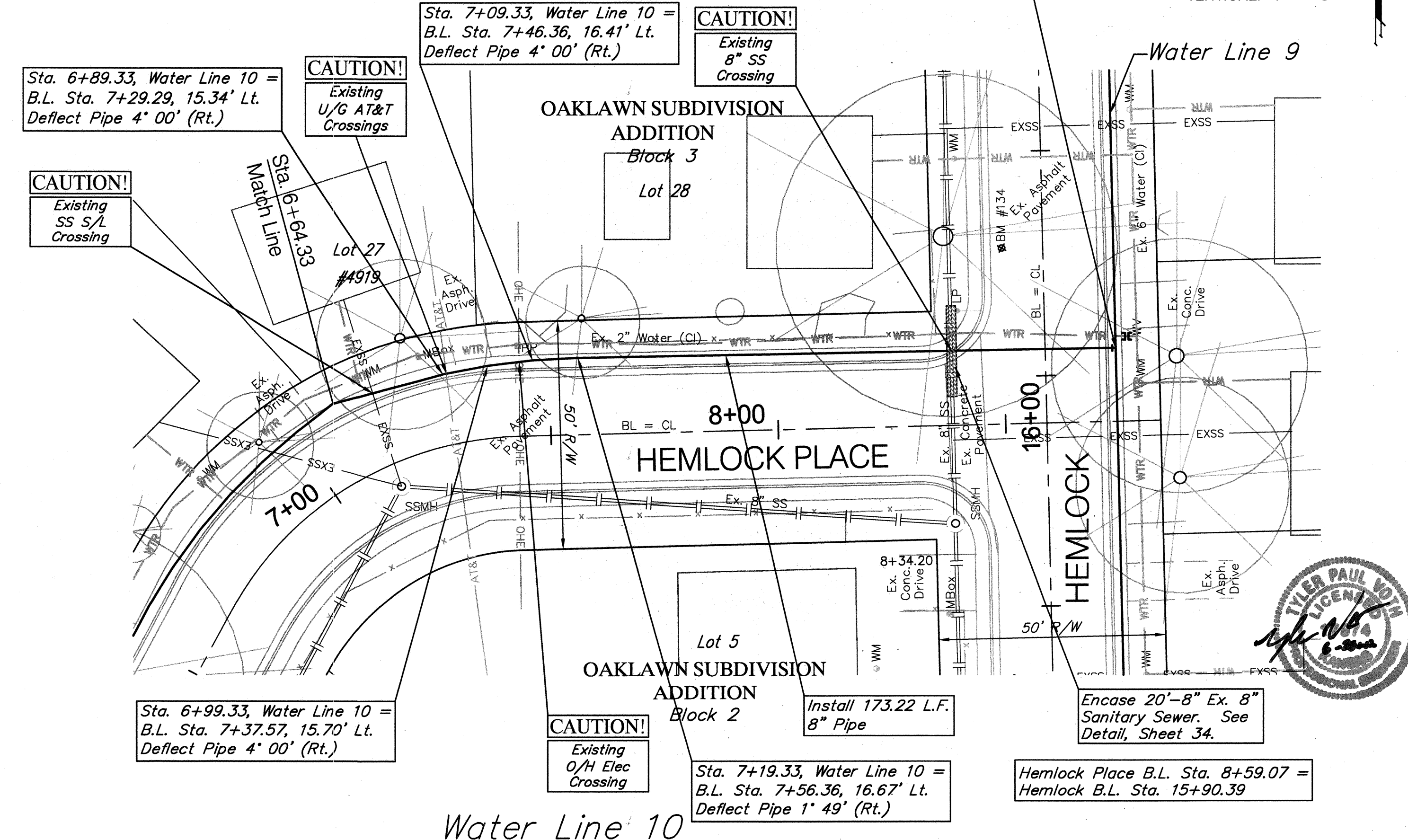


BENCHMARK:
 BM #134 - Magnail/washer in asphalt at NW corner of intersection of Hemlock & North entrance of Hemlock Place, 37.4' North and 9.5' West of CL intersection.
 Elev. = 1269.46 (NAVD 88)

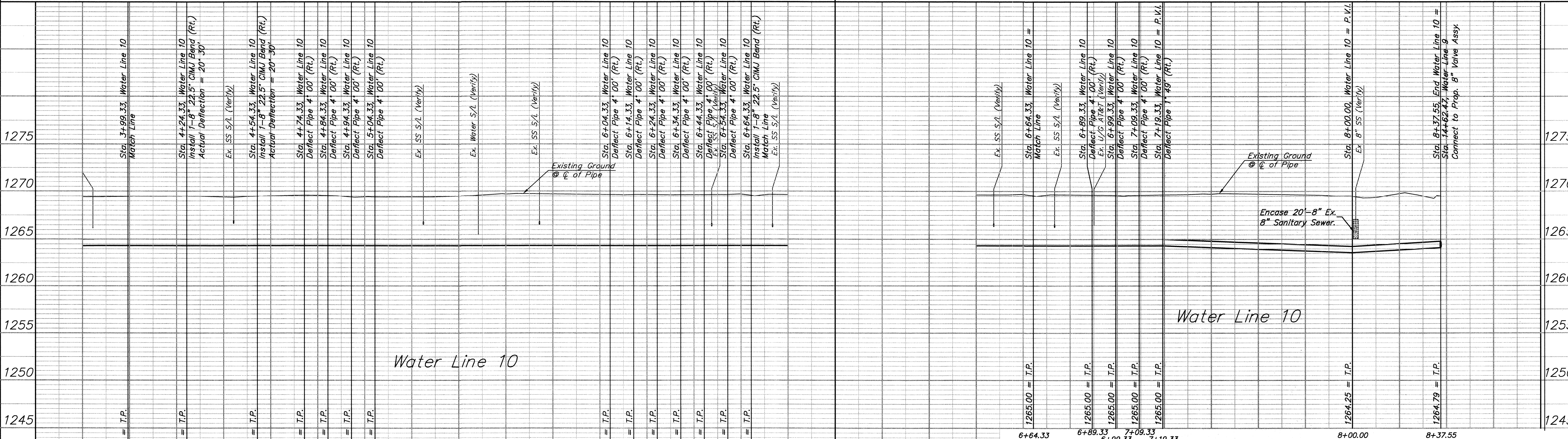


Water Line 10

BENCHMARK:
 BM #134 - Magnail/washer in asphalt at NW corner of intersection of Hemlock & North entrance of Hemlock Place, 37.4' North and 9.5' West of CL intersection.
 Elev. = 1269.46 (NAVD 88)



Water Line 10



Water Line 10

6+64.33 6+89.33 6+99.33 7+09.33 7+19.33 8+00.00 8+37.55

Drawing File: E:\Projects\Oaklawn Water Main Replacement (Civil 3d)\Oaklawn Base.dwg (Hemlock Place 02)
 Project No. 1108E654 CAPITAL IMPROVEMENT PROJECT

Design: TPV
 Drawn: STAFF
 Approved: TPV
 Scale: NOTED

HEMLOCK PLACE WATER PLAN/PROFILE
 Water Line 10, Sta. 3+99.33 to Sta. 8+37.55
 OAKLAWN WATER MAIN REPLACEMENT - PHASE 2

Baughman Company, P.A.
 315 Ellis St. Wichita, KS 67241 P 316-262-7271 F 316-262-0149
 ENGINEERING | SURVEYING | PLANNING | LANDSCAPE ARCHITECTURE

June 2012
 SHEET 23 OF 37