

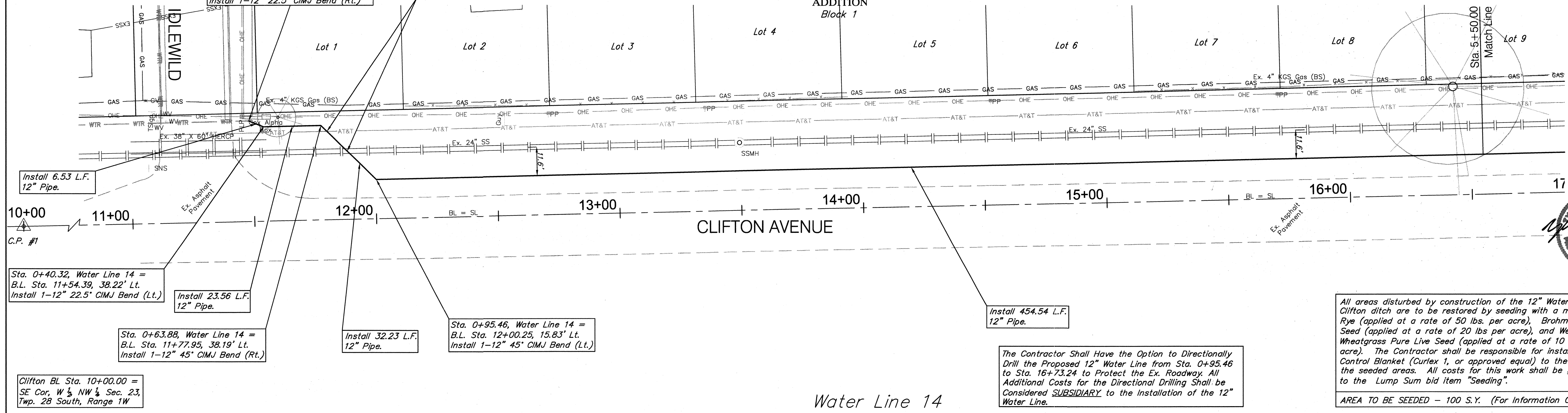
BENCHMARK:
 BM #119 - Chiseled "+" in the SW Corner of the Entrance to Pinaire Mobile Home Park at 5205 S Clifton, 24.0' West of the Centerline of Clifton. Elev. = 1267.61 (NAVD 88)

SCALE:
 HORIZONTAL: 1" = 20'
 VERTICAL: 1" = 5'

* Location of Existing Cap is Based on Record Information from the City. The Contractor Shall Excavate the Ex. Water and to Verify Size and Location PRIOR to Beginning Construction. This Work Shall be Considered SUBSIDIARY to the Water Line Installation.

CAUTION!
 Existing U/G AT&T 24" SS Crossings

Sta. 0+33.79, Begin Water Line 14 = B.L. Sta. 11+48.36, 40.73' Lt. Remove 12" Cap.* Install 1-12" 22.5° CIMJ Bend (Rt.)



Install 6.53 L.F. 12" Pipe.
 C.P. #1

Sta. 0+40.32, Water Line 14 = B.L. Sta. 11+54.39, 38.22' Lt. Install 1-12" 22.5° CIMJ Bend (Lt.)

Install 23.56 L.F. 12" Pipe.

Sta. 0+63.88, Water Line 14 = B.L. Sta. 11+77.95, 38.19' Lt. Install 1-12" 45° CIMJ Bend (Rt.)

Install 32.23 L.F. 12" Pipe.

Sta. 0+95.46, Water Line 14 = B.L. Sta. 12+00.25, 15.83' Lt. Install 1-12" 45° CIMJ Bend (Lt.)

Install 454.54 L.F. 12" Pipe.

The Contractor Shall Have the Option to Directionally Drill the Proposed 12" Water Line from Sta. 0+95.46 to Sta. 16+73.24 to Protect the Ex. Roadway. All Additional Costs for the Directional Drilling Shall be Considered SUBSIDIARY to the Installation of the 12" Water Line.

All areas disturbed by construction of the 12" Water line in the Clifton ditch are to be restored by seeding with a mixture of Rye (applied at a rate of 50 lbs. per acre), Brohm Pure Live Seed (applied at a rate of 20 lbs per acre), and Western Wheatgrass Pure Live Seed (applied at a rate of 10 lbs per acre). The Contractor shall be responsible for installing Erosion Control Blanket (Curlax 1, or approved equal) to the limits of the seeded areas. All costs for this work shall be SUBSIDIARY to the Lump Sum bid item "Seeding".
 AREA TO BE SEEDED - 100 S.Y. (For Information Only)

