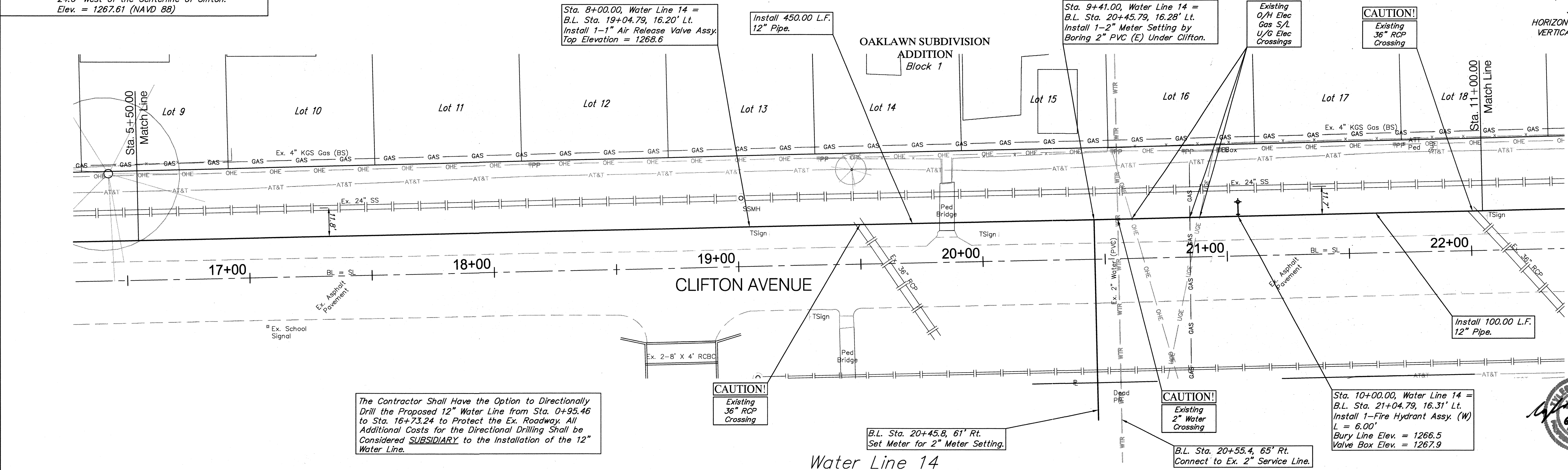


BENCHMARK:  
 BM #119 - Chiseled "+" in the SW Corner of the Entrance to Pinaire Mobile Home Park at 5205 S Clifton, 24.0' West of the Centerline of Clifton. Elev. = 1267.61 (NAVD 88)

SCALE:  
 HORIZONTAL: 1" = 20'  
 VERTICAL: 1" = 5'



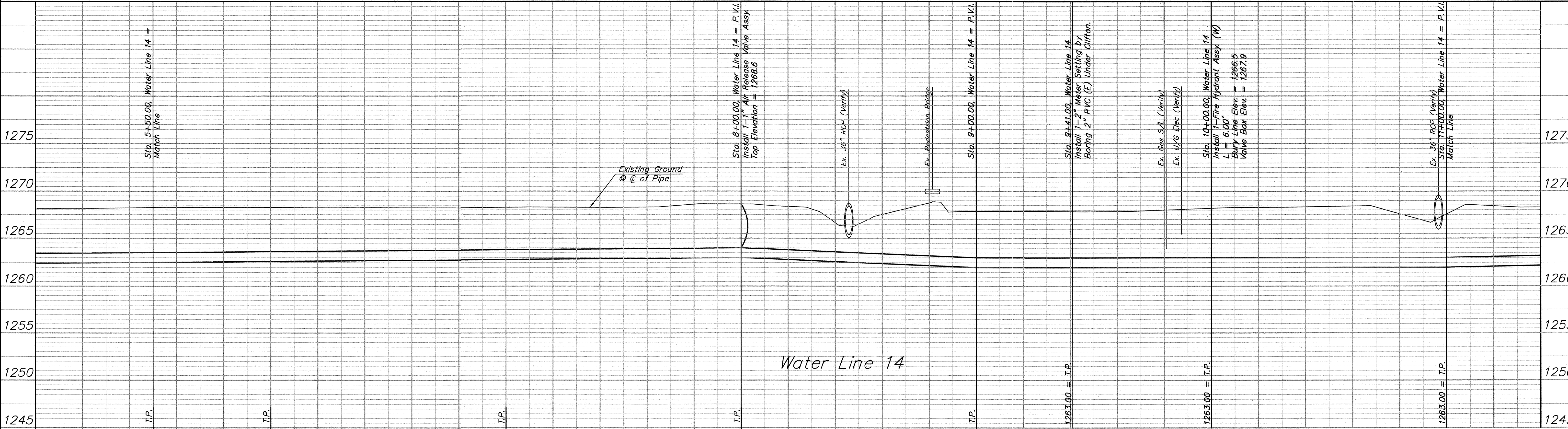
The Contractor Shall Have the Option to Directionally Drill the Proposed 12" Water Line from Sta. 0+95.46 to Sta. 16+73.24 to Protect the Ex. Roadway. All Additional Costs for the Directional Drilling Shall be Considered **SUBSIDIARY** to the Installation of the 12" Water Line.

**CAUTION!**  
 Existing 36" RCP Crossing

**CAUTION!**  
 Existing 2" Water Crossing

**CAUTION!**  
 Existing 36" RCP Crossing

Water Line 14



Water Line 14