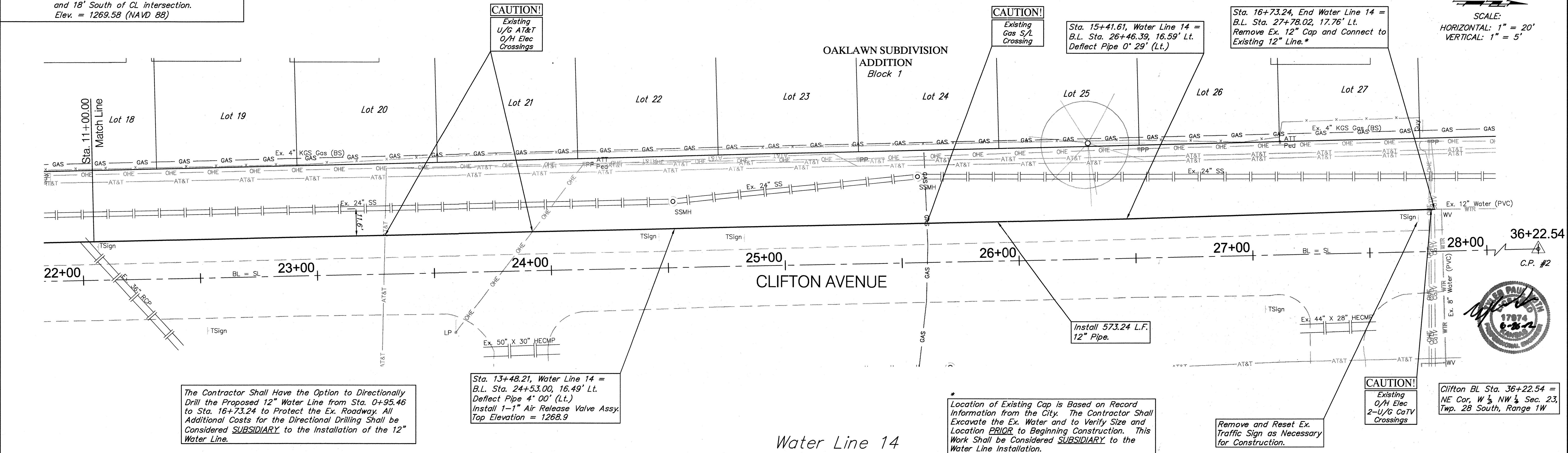


BENCHMARK:
 BM #132 - Magnail/washer in asphalt at SE corner of intersection of Tierra & Hemlock, ±9' East and 18' South of CL intersection.
 Elev. = 1269.58 (NAVD 88)

SCALE:
 HORIZONTAL: 1" = 20'
 VERTICAL: 1" = 5'



The Contractor Shall Have the Option to Directionally Drill the Proposed 12" Water Line from Sta. 0+95.46 to Sta. 16+73.24 to Protect the Ex. Roadway. All Additional Costs for the Directional Drilling Shall be Considered SUBSIDIARY to the Installation of the 12" Water Line.

Sta. 13+48.21, Water Line 14 =
 B.L. Sta. 24+53.00, 16.49' Lt.
 Defect Pipe 4' 00' (Lt.)
 Install 1-1" Air Release Valve Assy.
 Top Elevation = 1268.9

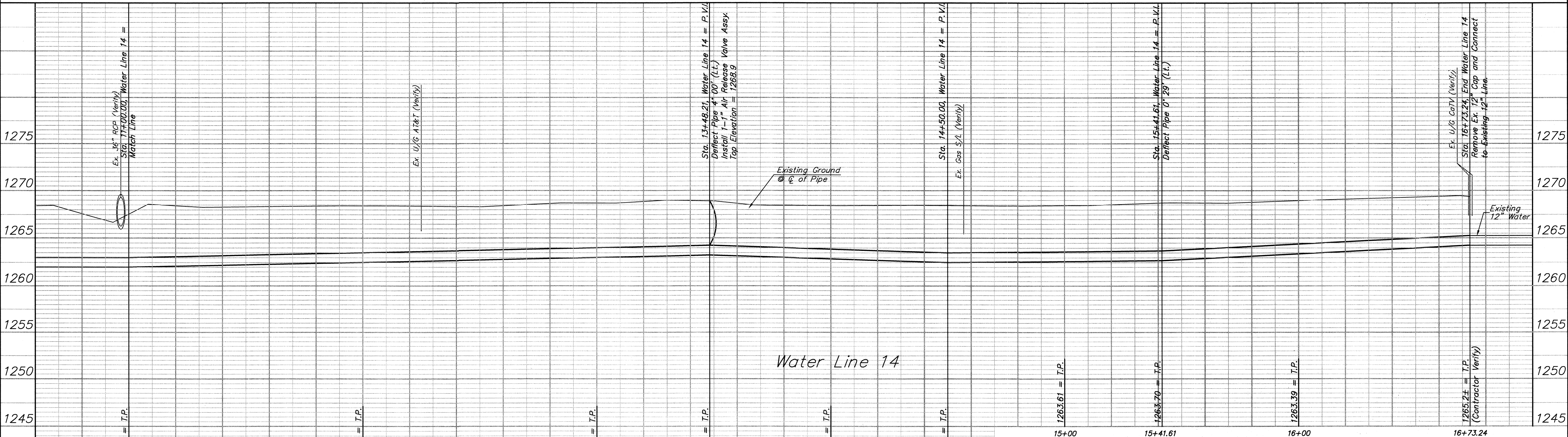
* Location of Existing Cap is Based on Record Information from the City. The Contractor Shall Excavate the Ex. Water and to Verify Size and Location PRIOR to Beginning Construction. This Work Shall be Considered SUBSIDIARY to the Water Line Installation.

Remove and Reset Ex. Traffic Sign as Necessary for Construction.

CAUTION!
 Existing O/H Elec 2-U/G CatV Crossings

Clifton BL Sta. 36+22.54 = NE Cor, W 1/2 NW 1/4, Sec. 23, Twp. 28 South, Range 1W

Water Line 14



Water Line 14

Drawing File: E:\Projects\Oaklawn Water Main Replacement\Civil 3d\Oaklawn Base.dwg (North Clifton 03)
 Project No. 1108-E654 CAPITAL IMPROVEMENT PROJECT
 CLIFTON AVENUE WATER PLAN & PROFILE
 Water Line 14, Sta. 11+00.00 to Sta. 16+73.59
 OAKLAWN WATER MAIN REPLACEMENT - PHASE 2

Baughman Company, P.A.
 315 Ella St. Wichita, KS 67241 P 316-262-7271 F 316-262-0149
 ENGINEERING | SURVEYING | PLANNING | LANDSCAPE ARCHITECTURE

June 2012
 SHEET 31 OF 37