

MH # 4848-376
Replace Manhole Frame & Cover
Construct Manhole Bench & Invert
Approx MH depth = 9.1 ft

Point Repair: Remove and replace 6 lf of 8" pipe, from MH 4848-375 to 6 feet north, including 4" tap replacement for 842 N. Chipper.

Remove 40 lf of 8" pipe
Install 40 lf of 8" pipe

MH # 4848-378
Replace Manhole Frame & Cover
Construct Manhole Bench & Invert
Approx MH depth = 8.4 ft

MH # 4848-375
Approx depth = 10.1 ft

MH # 4848-374
Replace Manhole Frame & Cover
Approx MH depth = 8.4 ft

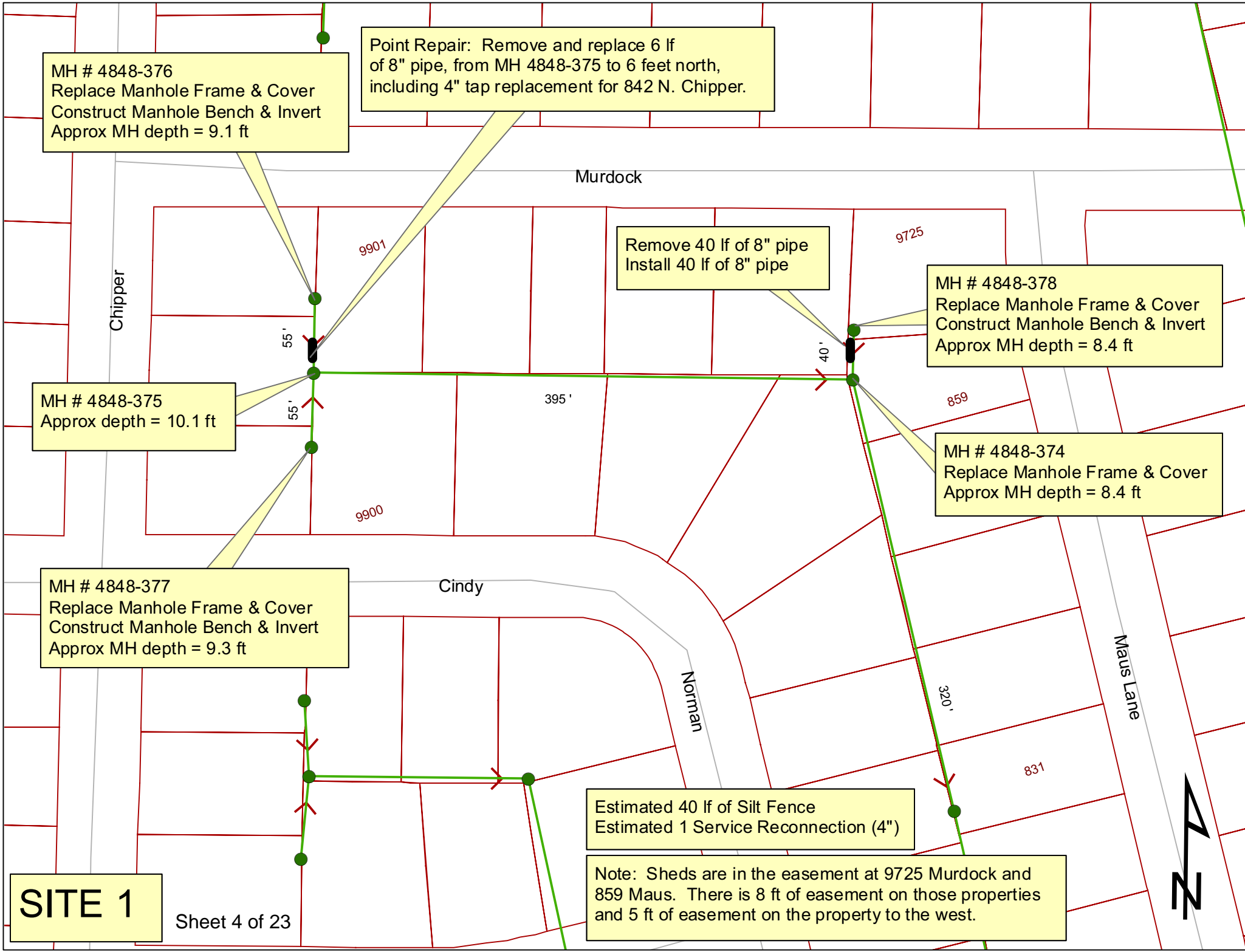
MH # 4848-377
Replace Manhole Frame & Cover
Construct Manhole Bench & Invert
Approx MH depth = 9.3 ft

Estimated 40 lf of Silt Fence
Estimated 1 Service Reconnection (4")

Note: Sheds are in the easement at 9725 Murdock and 859 Maus. There is 8 ft of easement on those properties and 5 ft of easement on the property to the west.

SITE 1

Sheet 4 of 23



N CHIPPER LN

W MURDOCK AVE

N MAUS LN

385

376

378

375

374

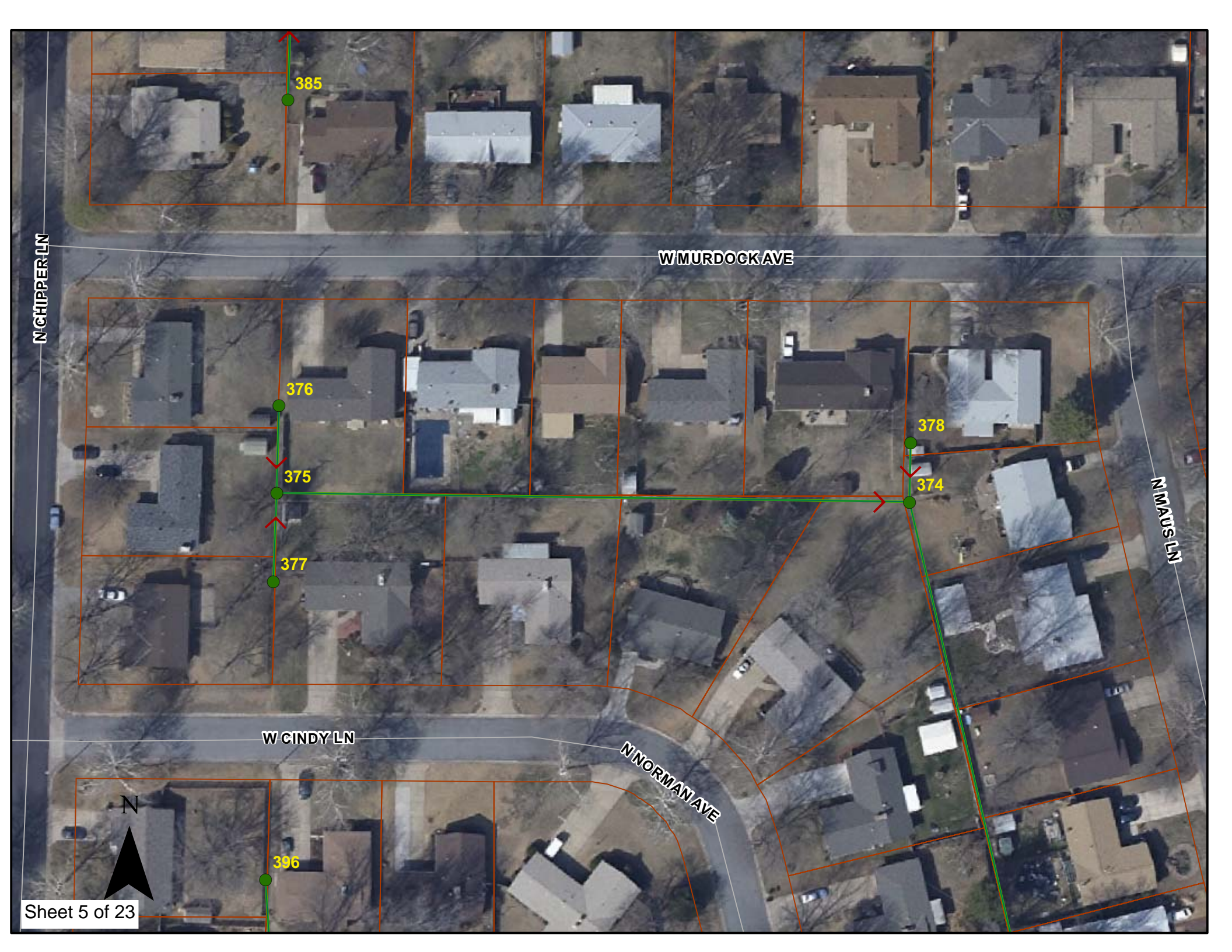
377

W CINDY LN

W NORMAN AVE

396

N



Video Inspection Master Report

2/24/2012

8:38 AM

US Structure: 4848-376 9901 W MURDOCK ST Date Insp: 5/6/2009 Basin: W06A
 DS Structure: 4848-375 9900 W CINDY ST Dir Televised: Downstream To Upstream

Pipe Information

Shape: Round Length Status: Project No. : K-053
 Dia/Ht: 8 Material: VCP Index:
 Length: 55.0 Slope: 0.400 Surface:

Obs. #	VTR	Counter	Distance	Location	Description	Rating	Obsrvd (gpm)	Ratings			Remain (gpm)	
								Est. (gpm)	Struct	Clean		
1			0.0		4848-375 DS Manhole	3						
2			3.0	842 S CHIPPER LANE	Break-In Conn	4		0.008	60	0	0.008	
Tap is protruding slightly and pipe is cracked all around the tap. Roots intruding from the cracks. Tap may be broken down.												
<u>REPLACE 6 LF OF PIPE TO FIX TAP AND BROKEN PIPE</u>												
3			9.0		Wye Service Sealed off	1		0.000	0	0	0.000	
4			9.0		Roots	2		0.004	2	4	0.004	
5			12.5		Roots	3		0.008	5	8	0.008	
6			18.3		Roots	2		0.004	2	4	0.004	
7			22.2		Roots	2		0.004	2	4	0.004	
8			22.2	Joint	Offset	2		0.000	0	0	0.000	
9			27.8		Roots	2		0.004	2	4	0.004	
10			36.9	Joint	Offset	3		0.010	20	0	0.010	
11			42.8		Roots	2		0.004	2	4	0.004	
12			45.8	850 S CHIPPER LANE	W Wye Service	1		0.000	0	0	0.000	
13			45.8	Joint	Offset	3		0.010	20	0	0.010	
14			49.7	Joint	Offset	3		0.010	20	0	0.010	
15			54.5		4848-376 US Manhole	3		0.000	0	0	0.000	
Pipe is higher than floor of the manhole. Manhole needs a bench & invert. Camera does not pan around to look at the manhole.												

Roots at joints

Video Inspection Master Report

2/24/2012

8:38 AM

US Structure: 4848-378 9725 W MURDOCK ST Date Insp: 5/6/2009 Basin: W06A
 DS Structure: 4848-374 859 N MAUS LN Dir Televised: Upstream To Downstream

Pipe Information

Shape: Round Length Status: Project No. : K-053
 Dia/Ht: 8 Material: VCP Index:
 Length: 40.0 Slope: 0.400 Surface:

Comments: LINE HAS LOTS OF SILT AND SAND, CAMERA WON'T PASS. LINE NEEDS TO BE CLEANED AND THEN TELEVISED.

Obs. #	VTR Counter	Distance	Ratings		Rating	Obsrvd (gpm)	Est. (gpm)	Struct	Clean	Remain (gpm)
			Location	Description						
1		0.0		4848-378 US Manhole MH needs a bench & invert	3		0.000	0	0	0.000
2		7.0	9725 W MURDOCK AVE	Break-In Conn Tap is rough & jagged with roots	3		0.004	2	0	0.004
3		11.2		Wye Service Sealed	1		0.000	0	0	0.000
4		24.7	Joint	Offset	3		0.010	20	0	0.010
5		24.7	Invert	Crack-Radial	3		0.004	5	0	0.004
6		26.7	Heavy Sand & Silt (2")	Debris	5		0.000	0	75	0.000

INCOMPLETE TELEVISIONING

859 Maus is tapped south of MH 4848-374

The owners of 9725 Murdock and 859 Maus have not been contacted about moving their sheds. The contractor shall notify and work with the homeowners to move the sheds as necessary.