

Contractor shall replace the existing concrete along the north property of 9020 W. 10th Street. (approx 90 ft long x 10" wide x 3.5" deep) Cost subsidiary to Site Restoration.

The owner of 9020 W. 10th Street was advised to remove his shed from the easement. The easement is 16 ft wide, with 8 ft on either side.

Estimated 6 Service Reconnections (4")
 Estimated 40 lf of Silt Fence

MH # 4848-180
 Approx depth = 13.2 ft
 9028 W. 10th St. N.

MH # 4848-181
 Approx depth = 9.1 ft
 8924 W. 10th St. N.

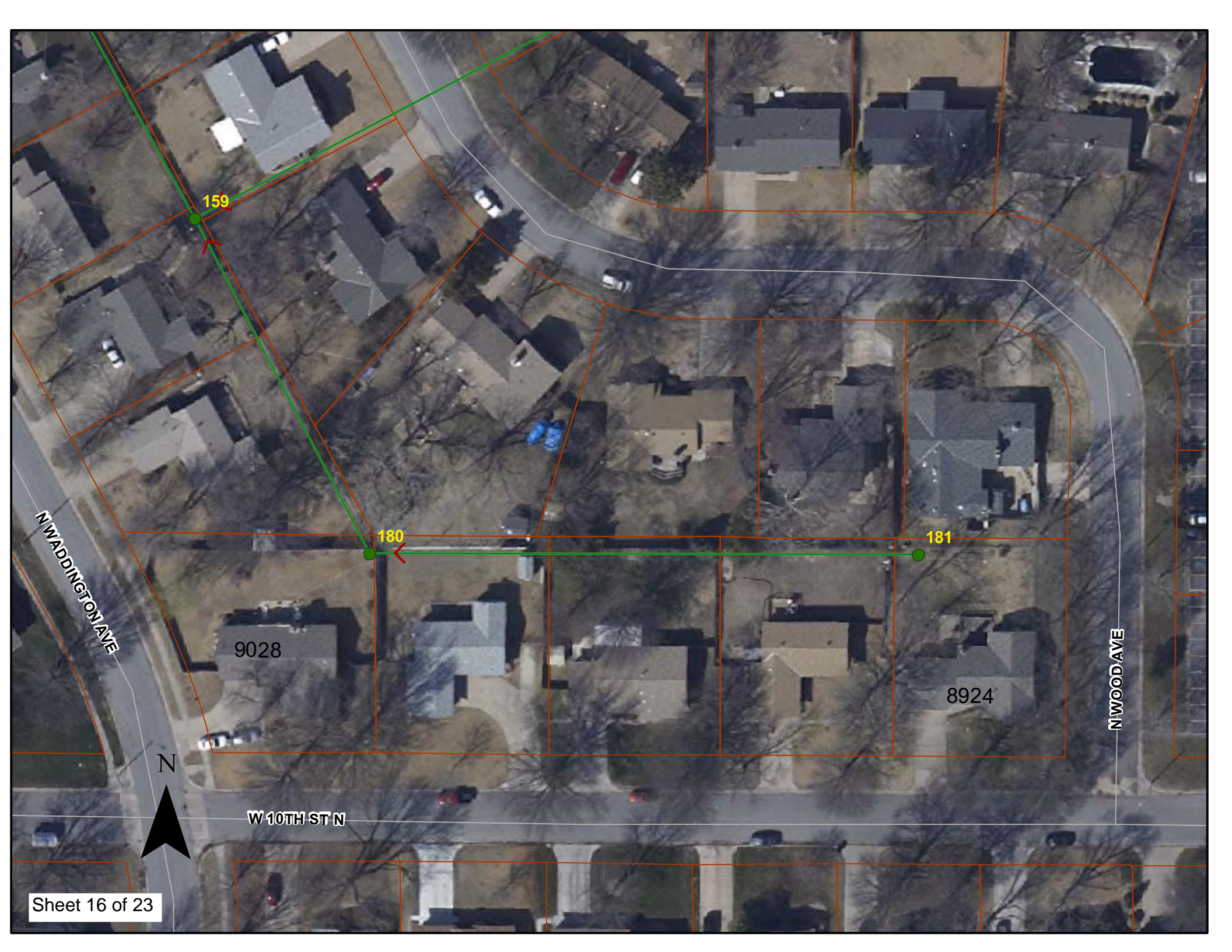
Remove 300 lf of 8" pipe
 Install 300 lf of 8" pipe

SITE 4

Sheet 15 of 23



Country
 Acres
 Baptist
 Church



159

180

181

9028

8924

N

W10TH ST N

NWADDINGTON AVE

NWOOD AVE



Video Inspection Master Report

4/5/2012

11:16 AM

US Structure: **4848-181** 8924 W 10TH ST Date Insp: 7/15/2009 Basin: W06A
 DS Structure: **4848-180** 9028 W 10TH ST N Dir Televised: Downstream To Upstream

Pipe Information

Shape: Round Length Status: Project No. : K-070
 Dia/Ht: 8 Material: VCP Index:
 Length: 299.3 Slope: 0.398 Surface:

| Obs. # | VTR Counter | Distance | Location | Description | Rating | Obsrvd (gpm) | Ratings | | | Remain (gpm) |
|--------|-------------|----------|-----------------------------|---|--------|--------------|------------|--------|-------|--------------|
| | | | | | | | Est. (gpm) | Struct | Clean | |
| 1 | | 0.4 | TV AGAINST FLOW | 4848-180 DS Manhole MH tap for 9028 W. 10 th Street | 1 | | | | | |
| 2 | | 12.6 | Joint | Offset | 4 | 0.030 | 60 | 0 | 0.030 | |
| 3 | | 21.1 | Joint | Offset | 3 | 0.010 | 20 | 0 | 0.010 | |
| 4 | | 29.1 | Joint | Offset | 2 | 0.000 | 0 | 0 | 0.000 | |
| 5 | | 37.4 | Joint | Offset | 3 | 0.010 | 20 | 0 | 0.010 | |
| 6 | | 41.7 | | Crack-Horizontal | 2 | 0.002 | 2 | 0 | 0.002 | |
| 7 | | 45.4 | Joint | Offset | 4 | 0.030 | 60 | 0 | 0.030 | |
| 8 | | 54.7 | 9020 W 10TH ST N | Break-In Conn | 3 | 0.004 | 2 | 0 | 0.004 | |
| 9 | | 61.6 | Joint | Offset | 2 | 0.000 | 0 | 0 | 0.000 | |
| 10 | | 65.7 | Joint | Offset | 4 | 0.030 | 60 | 0 | 0.030 | |
| 11 | | 73.9 | Joint | Offset | 2 | 0.000 | 0 | 0 | 0.000 | |
| 12 | | 81.9 | Joint (pipe heads downward) | Offset | 3 | 0.010 | 20 | 0 | 0.010 | |
| 13 | | 86.1 | Joint | Offset | 3 | 0.010 | 20 | 0 | 0.010 | |
| 14 | | 88.2 | | Sag | 3 | 0.000 | 5 | 0 | 0.000 | |
| 15 | | 88.8 | | Sag | 1 | 0.000 | 1 | 0 | 0.000 | |
| 16 | | 90.2 | Joint | Offset | 3 | 0.010 | 20 | 0 | 0.010 | |
| 17 | | 98.3 | Joint | Offset | 2 | 0.000 | 0 | 0 | 0.000 | |
| 18 | | 100.3 | 1123 N WOOD | Wye Service | 1 | 0.000 | 0 | 0 | 0.000 | |
| 19 | | 100.3 | Joint | Offset | 3 | 0.010 | 20 | 0 | 0.010 | |
| 20 | | 112.4 | Joint | Offset | 4 | 0.030 | 60 | 0 | 0.030 | |
| 21 | | 116.4 | Joint | Offset | 2 | 0.000 | 0 | 0 | 0.000 | |
| 22 | | 120.4 | Joint | Offset | 3 | 0.010 | 20 | 0 | 0.010 | |
| 23 | | 132.9 | Joint | Offset | 4 | 0.030 | 60 | 0 | 0.030 | |
| 24 | | 136.6 | Joint | Offset | 2 | 0.000 | 0 | 0 | 0.000 | |
| 25 | | 148.9 | Joint | Offset | 3 | 0.010 | 20 | 0 | 0.010 | |
| 26 | | 150.1 | 9010 W 10TH ST N | Break-In Conn | 3 | 0.004 | 2 | 0 | 0.004 | |
| 27 | | 153.1 | Joint | Offset | 2 | 0.000 | 0 | 0 | 0.000 | |
| 28 | | 156.9 | Joint | Offset | 3 | 0.010 | 20 | 0 | 0.010 | |
| 29 | | 161.1 | Joint | Offset | 2 | 0.000 | 0 | 0 | 0.000 | |
| 30 | | 164.9 | Joint | Offset | 4 | 0.030 | 60 | 0 | 0.030 | |
| 31 | | 173.3 | Joint | Offset | 3 | 0.010 | 20 | 0 | 0.010 | |
| 32 | | 177.3 | Joint | Offset | 4 | 0.030 | 60 | 0 | 0.030 | |
| 33 | | 181.3 | Joint | Offset | 2 | 0.000 | 0 | 0 | 0.000 | |

Video Inspection Master Report

4/5/2012

11:16 AM

US Structure: **4848-181** 8924 W 10TH ST Date Insp: 7/15/2009 Basin: W06A
 DS Structure: **4848-180** 9028 W 10TH ST N Dir Televised: Downstream To Upstream

| | | | | | | | | | |
|----|-------|-------------------|-----------------------------|------------------|---|-------|----|---|-------|
| 34 | 185.2 | Joint | | Offset | 3 | 0.010 | 20 | 0 | 0.010 |
| 35 | 189.4 | Joint | | Offset | 2 | 0.000 | 0 | 0 | 0.000 |
| 36 | 197.6 | | | Crack-Horizontal | 3 | 0.004 | 5 | 0 | 0.004 |
| 37 | 200.0 | | | Crack-Radial | 3 | 0.004 | 5 | 0 | 0.004 |
| 38 | 201.5 | Joint | | Offset | 4 | 0.030 | 60 | 0 | 0.030 |
| 39 | 205.5 | Joint | | Offset | 3 | 0.010 | 20 | 0 | 0.010 |
| 40 | 209.8 | Joint | | Offset | 2 | 0.000 | 0 | 0 | 0.000 |
| 41 | 217.7 | | | Roots | 3 | 0.008 | 5 | 8 | 0.008 |
| 42 | 219.8 | 1115 N WOOD | | Wye Service | 2 | 0.000 | 0 | 0 | 0.000 |
| 43 | 219.8 | | | Roots | 3 | 0.008 | 5 | 8 | 0.008 |
| 44 | 219.8 | Joint | | Offset | 3 | 0.010 | 20 | 0 | 0.010 |
| 45 | 222.3 | | | Sag | 2 | 0.000 | 2 | 0 | 0.000 |
| 46 | 222.9 | | | Sag | 1 | 0.000 | 1 | 0 | 0.000 |
| 47 | 223.8 | | | Roots | 3 | 0.008 | 5 | 8 | 0.008 |
| 48 | 223.8 | Joint | | Offset | 2 | 0.000 | 0 | 0 | 0.000 |
| 49 | 228.1 | Joint | | Offset | 3 | 0.010 | 20 | 0 | 0.010 |
| 50 | 228.6 | | | Sag | 3 | 0.000 | 5 | 0 | 0.000 |
| 51 | 232.0 | Joint | | Offset | 4 | 0.030 | 60 | 0 | 0.030 |
| 52 | 240.0 | Joint | | Offset | 3 | 0.010 | 20 | 0 | 0.010 |
| 53 | 241.8 | 8932 W 10TH ST N | | Break-In Conn | 2 | 0.002 | 0 | 0 | 0.002 |
| 54 | 242.6 | Joint | | Offset | 4 | 0.030 | 60 | 0 | 0.030 |
| 55 | 254.3 | Joint | | Offset | 2 | 0.000 | 0 | 0 | 0.000 |
| 56 | 258.2 | Joint | | Offset | 4 | 0.030 | 60 | 0 | 0.030 |
| 57 | 266.7 | Joint | | Offset | 3 | 0.010 | 20 | 0 | 0.010 |
| 58 | 274.3 | Joint | | Offset | 3 | 0.010 | 20 | 0 | 0.010 |
| 59 | 278.6 | Joint | | Offset | 3 | 0.010 | 20 | 0 | 0.010 |
| 60 | 282.7 | Joint | | Offset | 2 | 0.000 | 0 | 0 | 0.000 |
| 61 | 290.2 | Joint | | Offset | 3 | 0.010 | 20 | 0 | 0.010 |
| 62 | 292.0 | 1107 N WOOD / PVC | | Break-In Conn | 1 | 0.001 | 0 | 0 | 0.001 |
| 63 | 296.4 | Joint | | Offset | 2 | 0.000 | 0 | 0 | 0.000 |
| 64 | 300.7 | 8924 W 10TH ST N | Manhole Tap / Break-In Conn | | 1 | 0.001 | 0 | 0 | 0.001 |
| 65 | 301.9 | | 4848-181 US Manhole | | 4 | 0.000 | 0 | 0 | 0.000 |

POOR GRADE / all the offset joints make the pipe "roller coaster" with ups and downs.