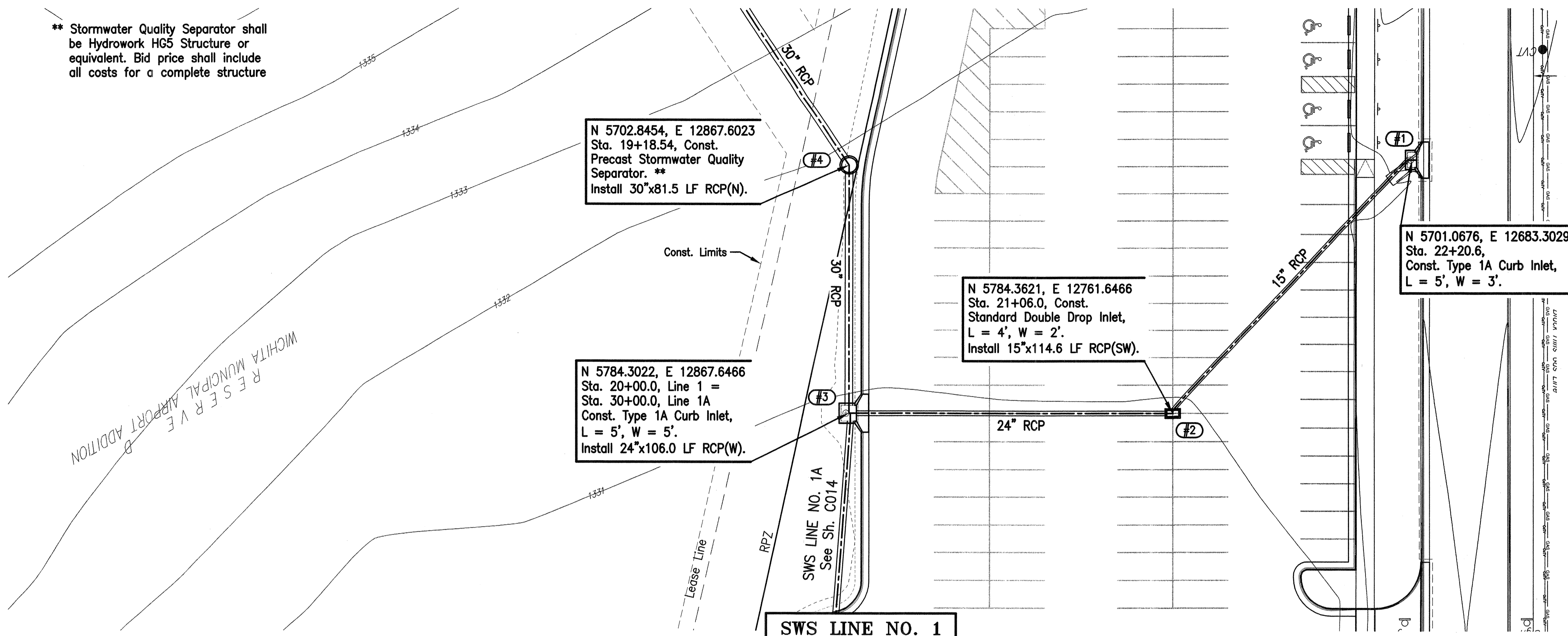
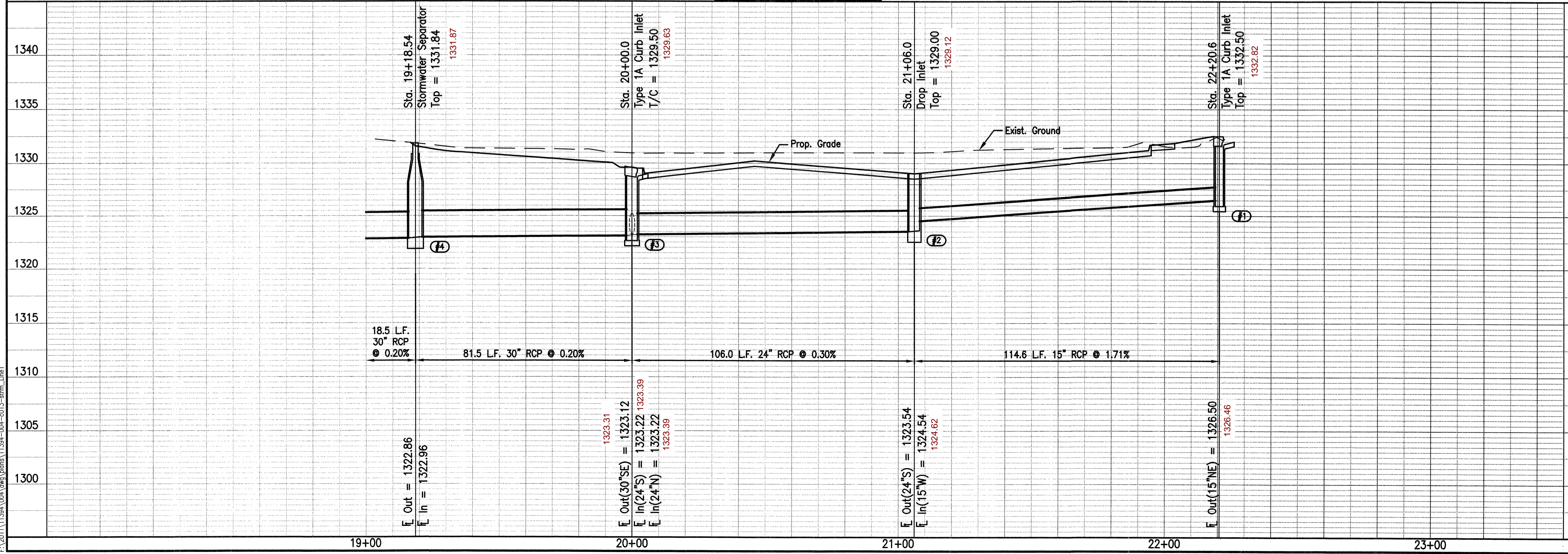


** Stormwater Quality Separator shall be Hydrowork HG5 Structure or equivalent. Bid price shall include all costs for a complete structure



PLAN	CHECKED	DATE
	CHECKED	

PROFILE	CHECKED	DATE
	CHECKED	



THE WICHITA AIRPORT AUTHORITY
MID-CONTINENT AIRPORT
STORM SEWER LINE 1A

Professional Engineering Consultants, P.A.
303 S. TOPEKA WICHITA, KANSAS 67202
316-262-2651 • FAX 316-262-3003
Job No. 11394-004 Date Oct. 2011
Designed By DNR Drawn By DJL

Saved 01-13-2012 11:45:28 AM by DMS
Plot Scale 1:1 02-22-2012 1:06:28 AM by GUFF L. McDONALD
E:\2011\1394\004\Drawings\11394-004-001P-Storm_Line1