



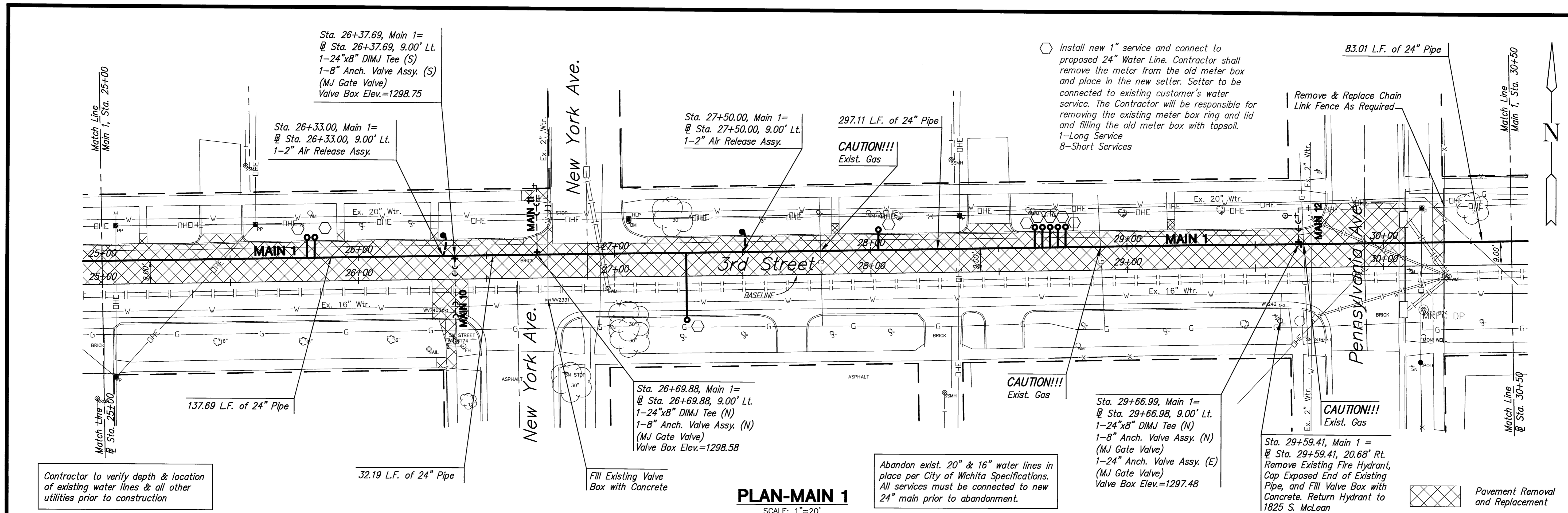
**3RD STREET
WATER MAIN REPLACEMENT
FROM CENTRAL CORRIDOR TO I-135**

MAIN 1
SHEET TITLE
448-90217
PROJECT NUMBER

JRA / JSB / JRA
DESIGNED DRAWN CHECKED

ISSUED
June 2012
REVISED

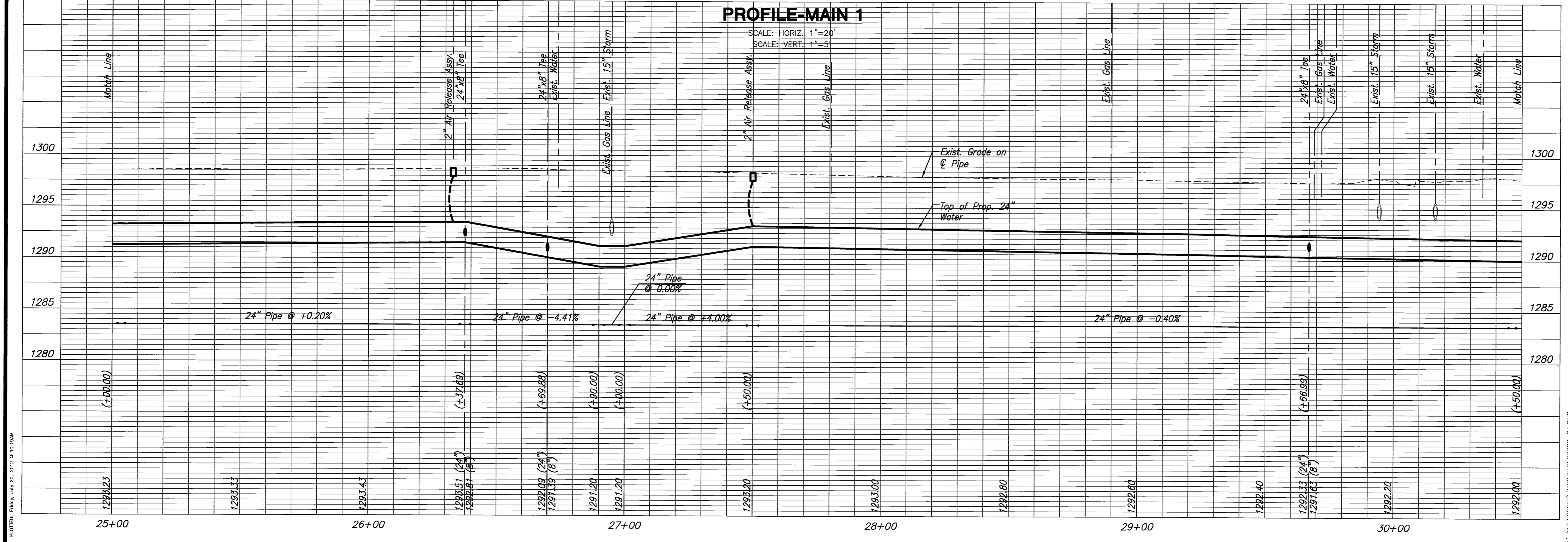
SHEET NO.
10 of 37



Contractor to verify depth & location of existing water lines & all other utilities prior to construction

Abandon exist. 20" & 16" water lines in place per City of Wichita Specifications. All services must be connected to new 24" main prior to abandonment.

PLAN-MAIN 1
SCALE: 1"=20'



PROFILE-MAIN 1
SCALE: HORIZ. 1"=20'
SCALE: VERT. 1"=5'

PLOTTED: Friday, July 20, 2012 @ 10:19 AM

J:\A_Civil\06692\DWG\WTR\06692-C4.DWG