



3RD STREET WATER MAIN REPLACEMENT FROM CENTRAL CORRIDOR TO I-135

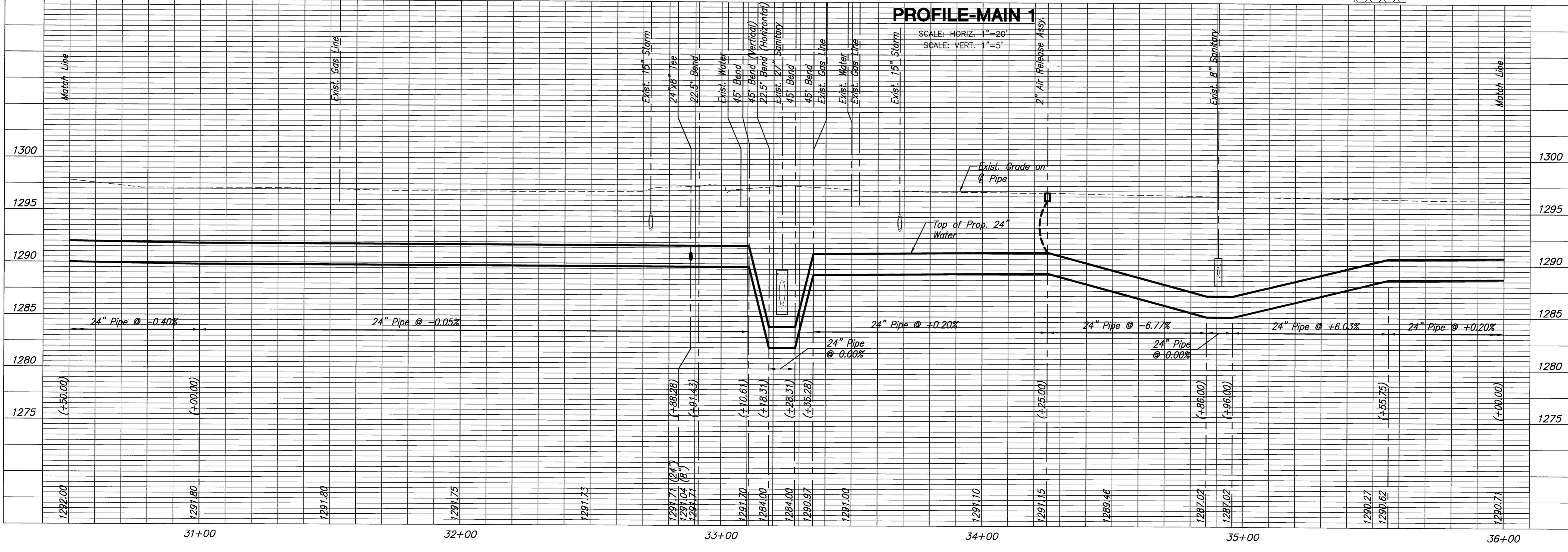
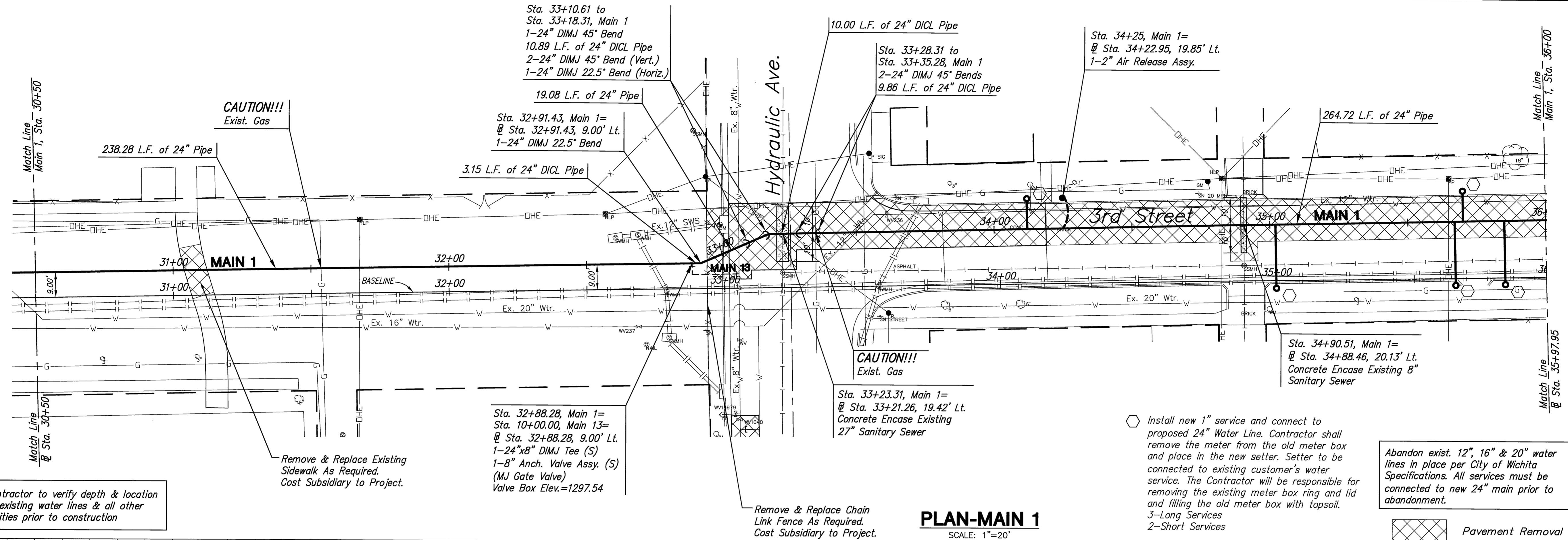
MAIN 1

SHEET TITLE
448-90217
PROJECT NUMBER

JRA, JSB, JRA
DESIGNED DRAWN CHECKED

ISSUED June 2012
REVISED

SHEET NO.
11 of 37



Contractor to verify depth & location of existing water lines & all other utilities prior to construction

Remove & Replace Existing Sidewalk As Required. Cost Subsidiary to Project.

Sta. 32+88.28, Main 1=
@ Sta. 32+88.28, 9.00' Lt.
1-24"x8" DIMJ Tee (S)
1-8" Anch. Valve Assy. (S)
(MJ Gate Valve)
Valve Box Elev.=1297.54

Remove & Replace Chain Link Fence As Required. Cost Subsidiary to Project.

Install new 1" service and connect to proposed 24" Water Line. Contractor shall remove the meter from the old meter box and place in the new setter. Setter to be connected to existing customer's water service. The Contractor will be responsible for removing the existing meter box ring and lid and filling the old meter box with topsoil.
3-Long Services
2-Short Services

Abandon exist. 12", 16" & 20" water lines in place per City of Wichita Specifications. All services must be connected to new 24" main prior to abandonment.

Pavement Removal