



**3RD STREET  
WATER MAIN REPLACEMENT  
FROM CENTRAL CORRIDOR TO I-135**

**MAIN 1**

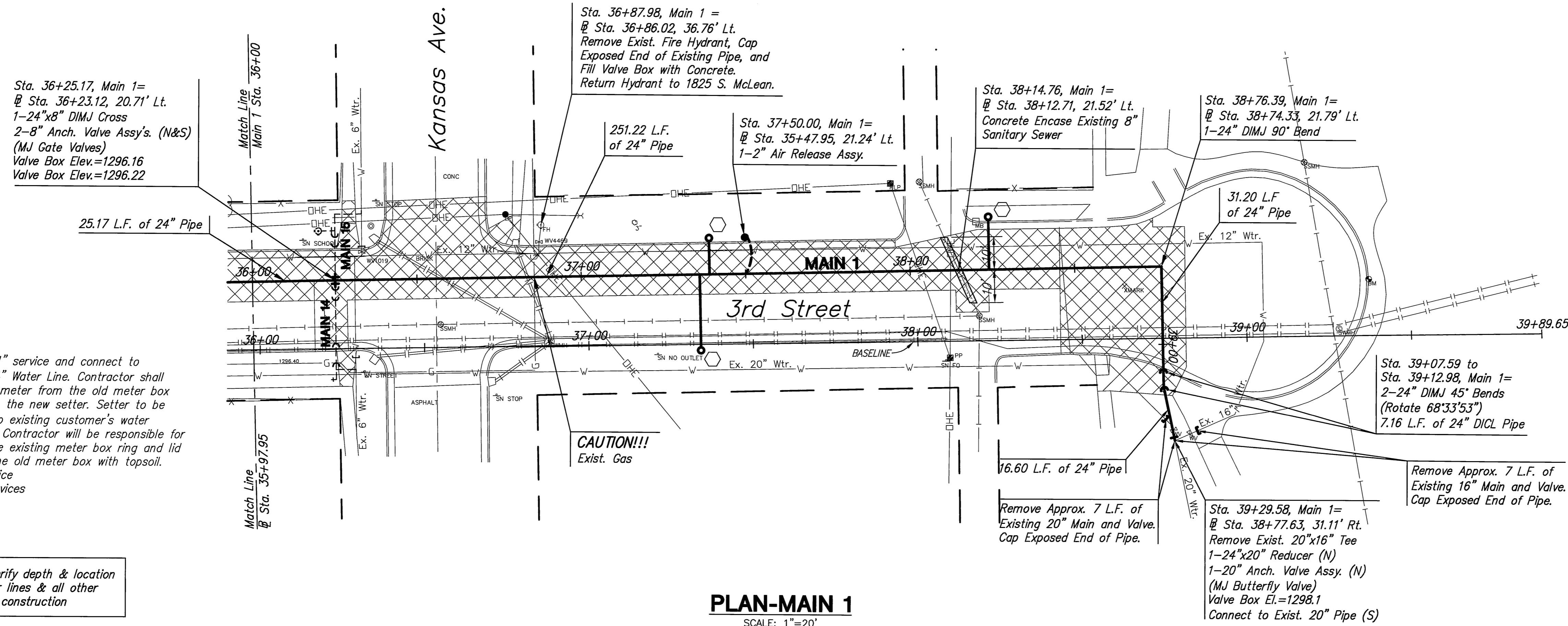
SHEET TITLE  
**448-90217**  
PROJECT NUMBER

JRA, JSB, JRA  
DESIGNED DRAWN CHECKED

ISSUED  
June 2012  
REVISED

SHEET NO.

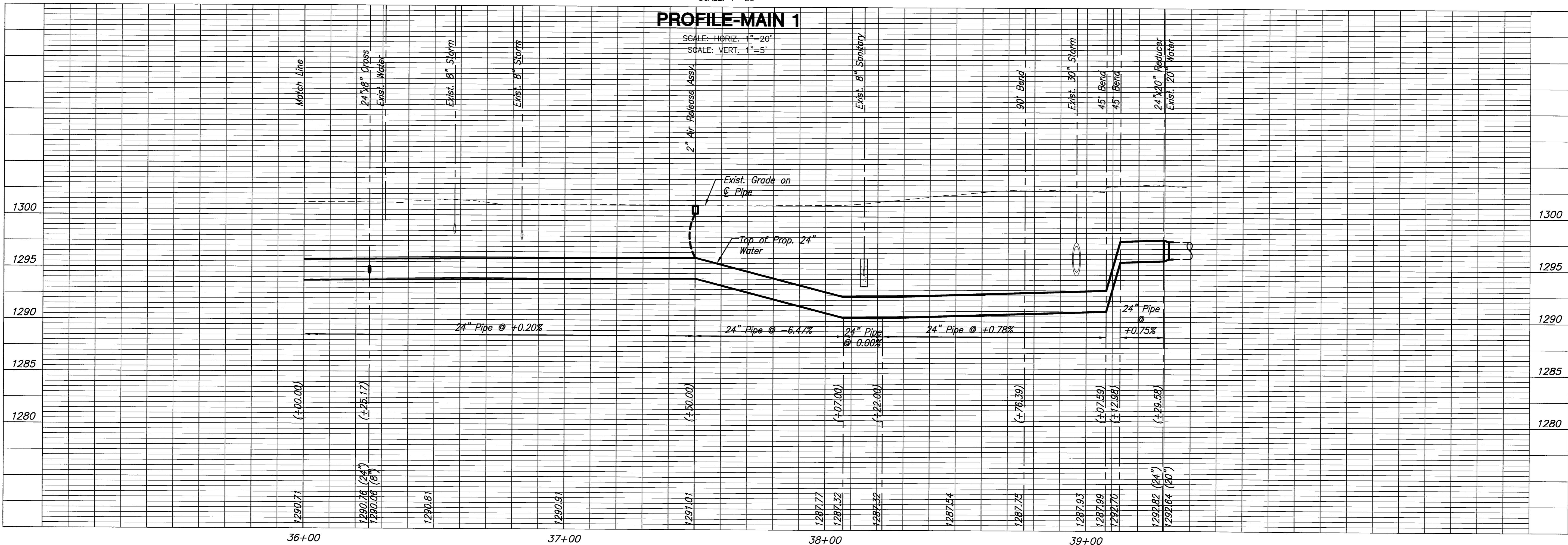
12 of 37



**PLAN-MAIN 1**  
SCALE: 1"=20'

**PROFILE-MAIN 1**

SCALE: HORIZ. 1"=20'  
SCALE: VERT. 1"=5'



Install new 1" service and connect to proposed 24" Water Line. Contractor shall remove the meter from the old meter box and place in the new setter. Setter to be connected to existing customer's water service. The Contractor will be responsible for removing the existing meter box ring and lid and filling the old meter box with topsoil.  
1-Long Service  
2-Short Services

Contractor to verify depth & location of existing water lines & all other utilities prior to construction

**CAUTION!!!**  
Exist. Gas

Abandon exist. 12", 16", & 20" water line in place per City of Wichita Specifications. All services must be connected to new 24" main prior to abandonment.

Pavement Removal