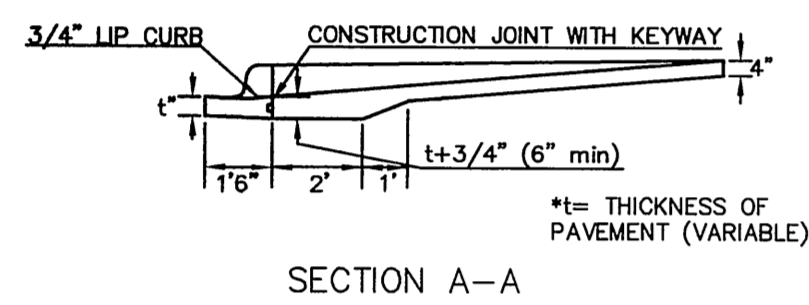
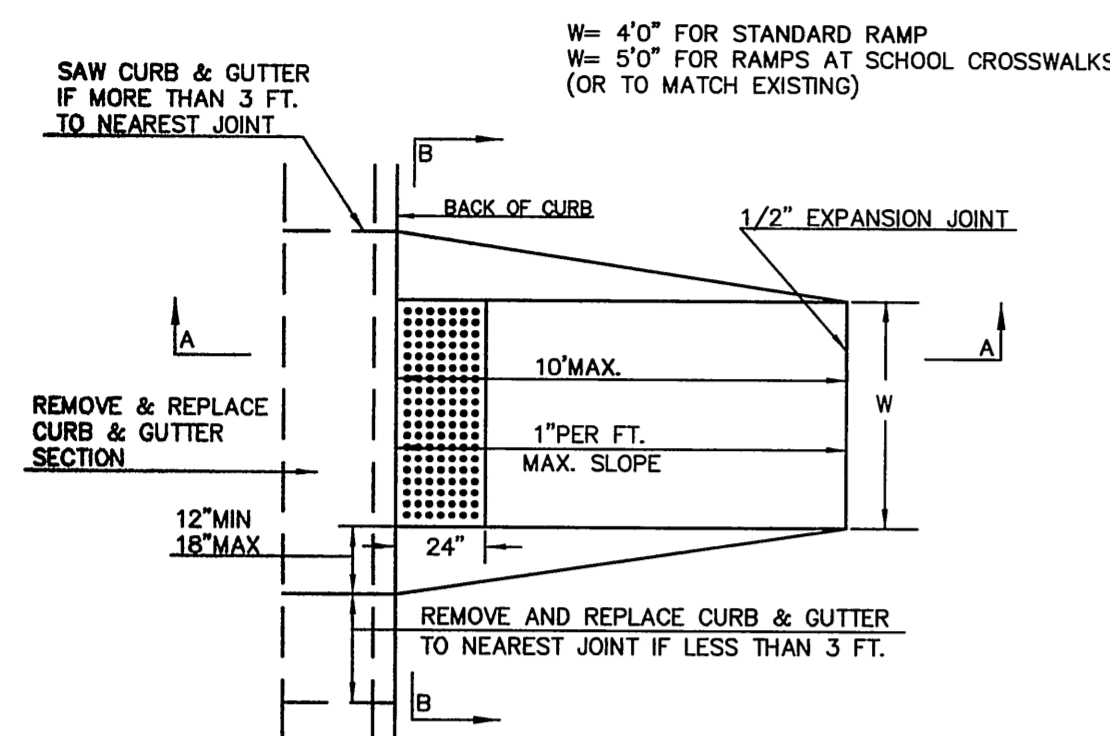
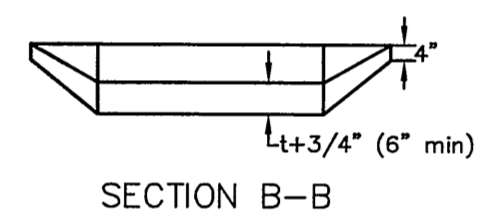


**STANDARD WHEELCHAIR RAMP  
CONSTRUCTION DETAIL FOR STREETS  
WITH COMBINED CURB & GUTTER  
(TYPE A)**

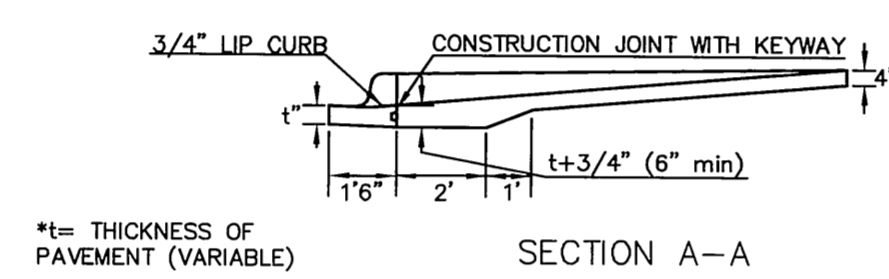
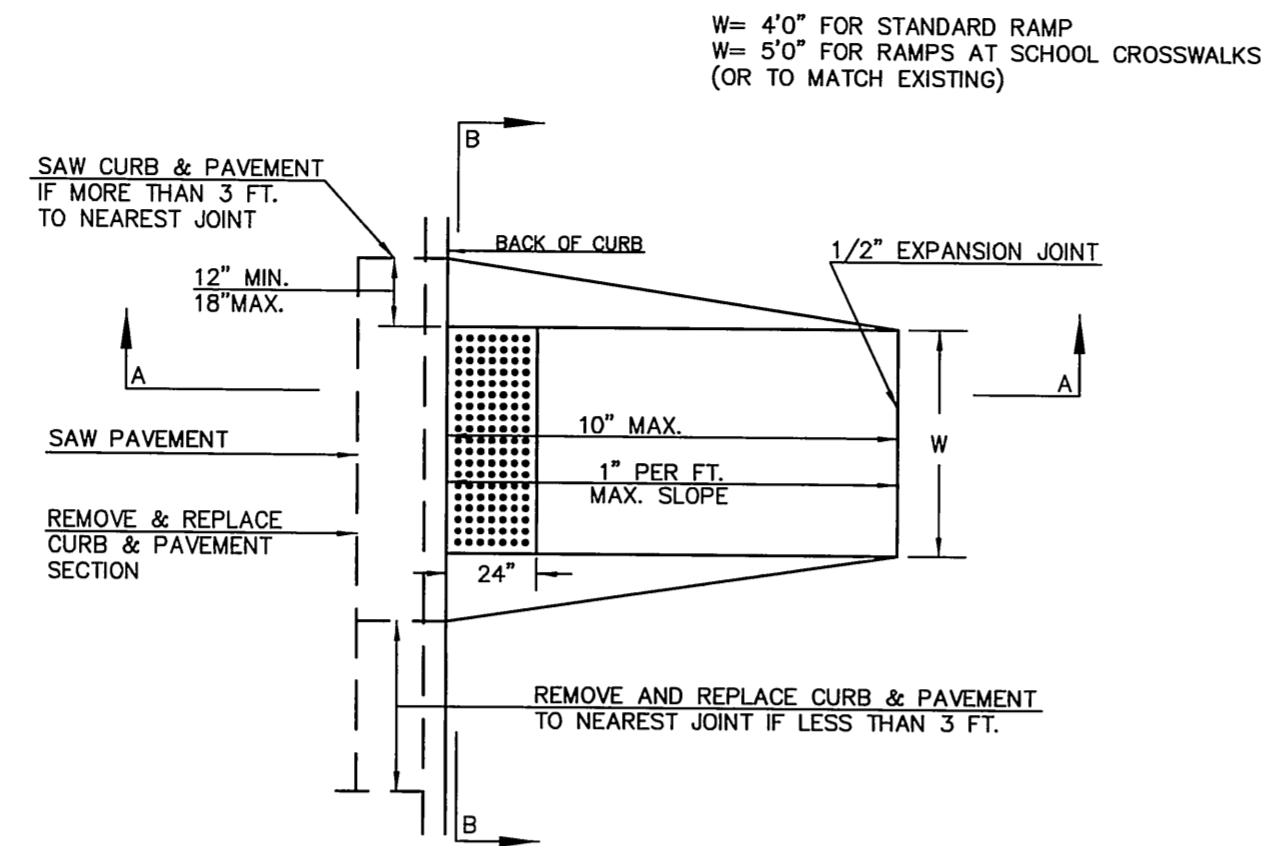


SECTION A-A

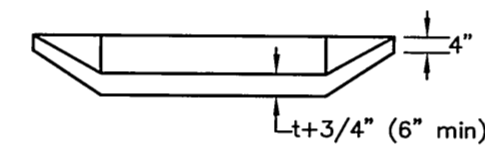


SECTION B-B

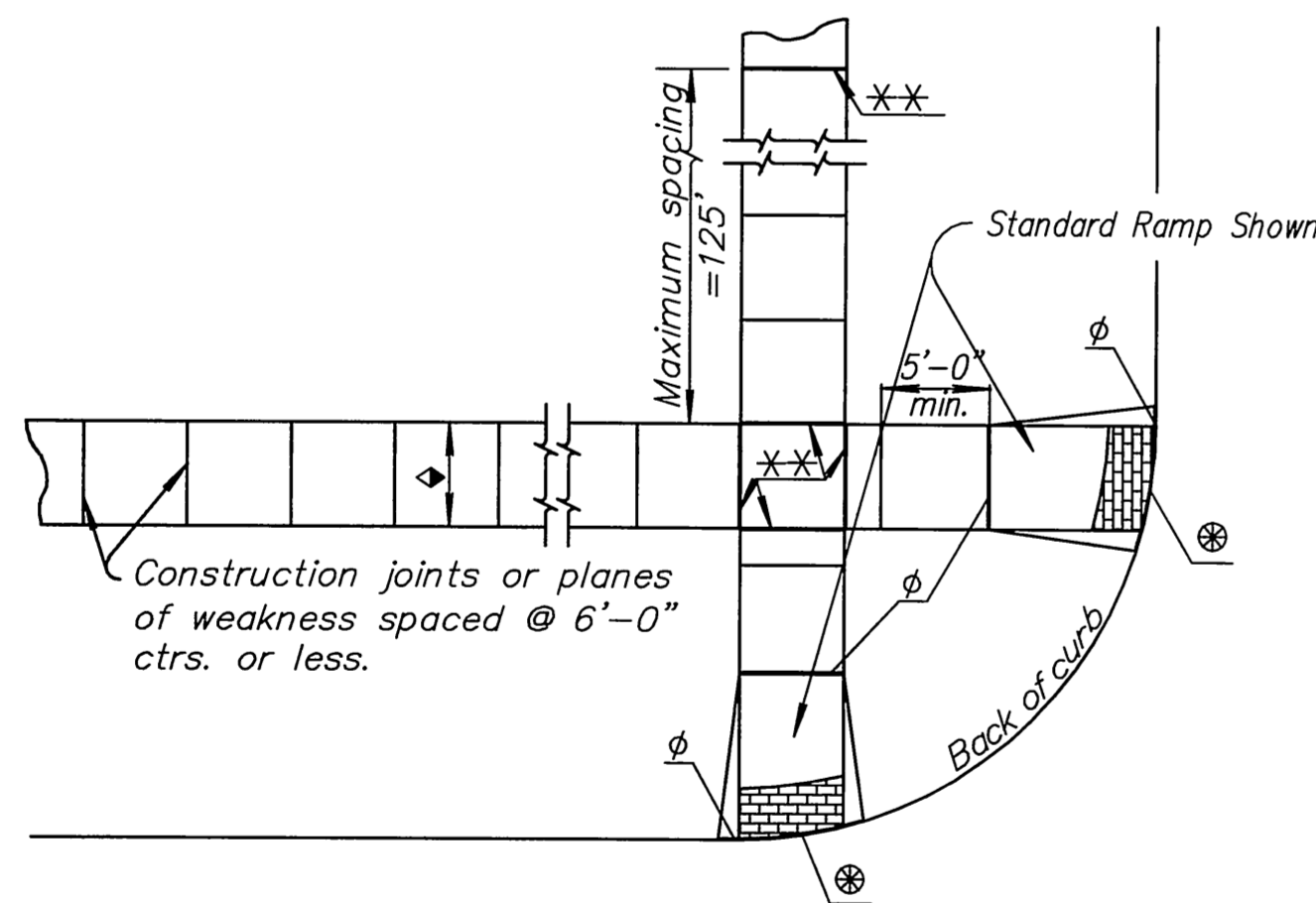
**STANDARD WHEELCHAIR RAMP CONSTRUCTION DETAIL FOR  
CONCRETE STREETS WITH MONOLITHIC CURB  
(TYPE A)**



SECTION A-A



SECTION B-B



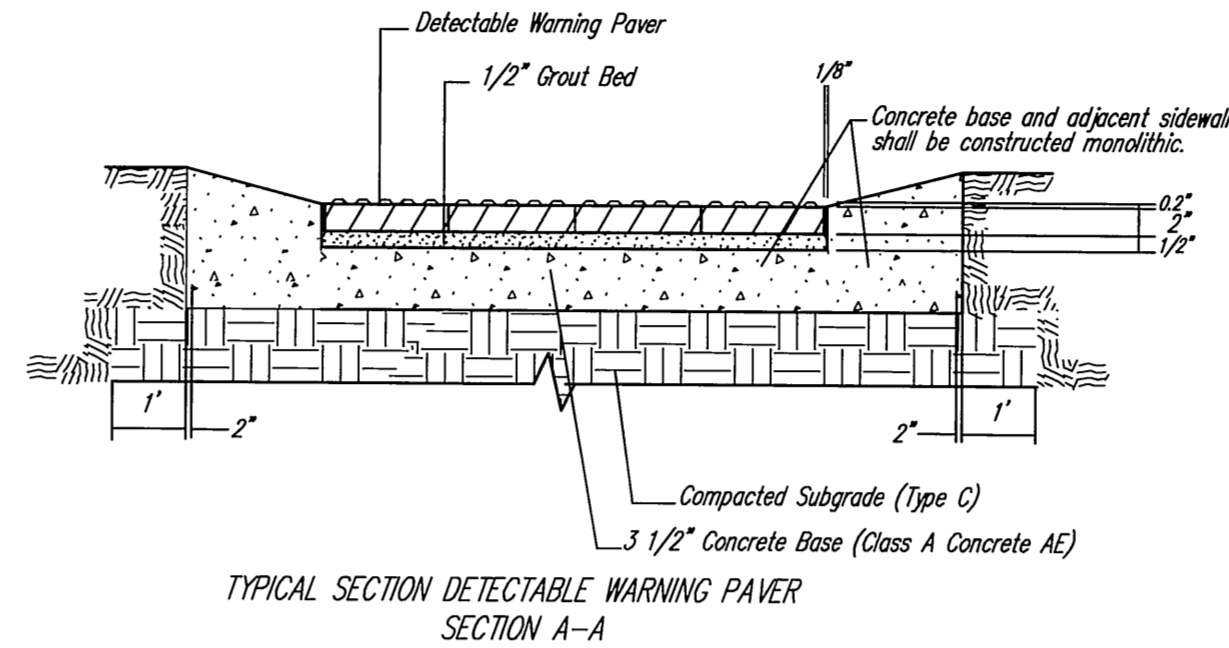
PLAN  
SIDEWALK

**NOTE:**

Sidewalk shall always have a cross-slope of 1/4 inch per foot or less, even through driveways unless directed otherwise by the Engineer.

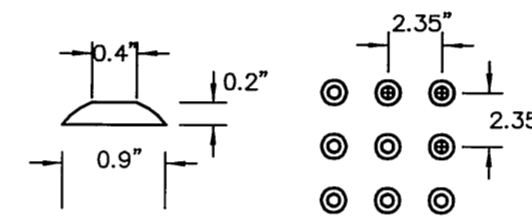
- ✱✱ Expansion joint (3/4" redwood board) located as shown.
- ◆ Variable width (5'-0" min.). Entrance walk to be same width as approach walk. Sidewalk width of 4'-0" may be used where existing conditions prohibit use of 5'-0".
- ∅ Expansion Joint (3/4" Redwood board) placed at either back of curb line or at sidewalk line.
- ⊛ Detectable warning installation is typical and required on Sidewalk Ramps. Refer to Ramp Detail sheet.

W= 4'0" FOR STANDARD RAMP  
W= 5'0" FOR RAMP AT SCHOOL CROSSWALKS  
(OR TO MATCH EXISTING)



TYPICAL SECTION DETECTABLE WARNING PAVER  
SECTION A-A

NOTE: HANOVER DETECTABLE WARNING PAVERS (OR AN APPROVED ALTERNATE) SHALL BE USED IN ALL WHEELCHAIR RAMPS. THE 11 3/4" RED 15" PAVES SHALL BE USED IN ALL APPLICATIONS.  
HANOVER ARCHITECTURAL PRODUCTS  
240 BENDER ROAD  
HANOVER, PA 17331  
1-717-637-0500  
www.hanoverpavers.com



DOME DETAIL

**GENERAL NOTE**

Combined curb and gutter or gutter adjoining concrete pavement may, at the contractor's option, be poured either monolithically or separately, using either the mix used in the concrete pavement or Class "A" Concrete (AE). The combined curb and gutter or gutter shall have the same section as shown on the plans. If poured monolithically, dowel bars may be omitted from the combined curb and gutter or gutter, but the wire mesh shall be extended to 6" or less from the back of the curb or gutter. Pavement joints shall be continued through curb or gutter and no other planes of weakness will be required. Joints in the combined curb and gutter or gutter are to be filled with the same material as used for the pavement joints.

Expansion joints in the combined curb and gutter are to be placed opposite expansion joints in the pavement.

Where combined curb and gutter or gutter does not abut concrete pavement or concrete base course, omit tie bars and longitudinal construction joint and place a 1" pre-moulded Expansion Joint Filler (Nonextruding, Type B) cut to the dimensions of the combined curb and gutter or gutter, at a spacing not to exceed 250' and at the ends of curb returns. Where combined curb and gutter or gutter is adjacent to bituminous construction, planes of weakness shall be constructed at 20' intervals.

A 4' length of transition from normal gutter section to the tapered gutter section shall be used at the ends of each run of gutter except where the gutter abuts a curb, such as at the end of a bridge. Inlets shall be located so as not to fall within this transition section.

Where pressure relief joint (Urethane Foam) is placed across the pavement, and gutter or curb and gutter is continued on for more than 10', use Type B, nonextruding, joint filler through gutter section, shaped to fit gutter or curb and gutter. Material may be solid Type B, approximately 4" thick, or other thickness pieces (Type B), bonded together with cold mastic or other material, as approved by the Engineer.

For expansion joint treatment where combined curb and gutter or gutter abuts a bridge wing on a U type abutment see bridge drawings.

Longitudinal joints shall be sawed and sealed with joint sealant. See Special Provisions for type.

**MKEC**  
ENGINEERING  
CONSULTANTS, INC.

411 N. WEBB ROAD  
WICHITA, K.S. 67206  
316-684-9600



**3RD STREET  
WATER MAIN REPLACEMENT  
FROM CENTRAL CORRIDOR TO I-135**

**PAVEMENT  
DETAILS**

SHEET TITLE  
**448-90217**  
PROJECT NUMBER

JRA / JSB / JRA  
DESIGNED DRAWN CHECKED

ISSUED  
**June 2012**

REVISED

SHEET NO.

**34 of 37**