

GENERAL NOTES:

1. Contractor will be required to provide notice to utility companies a minimum of seventy-two (72) hours prior to any excavation, as follows:

- Kansas One-Call 687-2470
- The Contractor must notify the following in case of an emergency:
- Cox Communications 262-4270
 - Kansas Gas Service 1-888-482-4950
 - Westar Energy 383-8650
 - Black Hills Energy 1-800-303-0357
 - AT&T 268-2245
 - City of Wichita Water Dept. 268-4563
 - City of Wichita Sewer Maint. 268-4024
 - City of Wichita Storm Sewer Maint. 268-4090
 - City of Wichita Traffic Maint. 268-4034
 - Conoco Phillips Pipeline Co. 1-877-287-2290
 - Southern Star Pipeline Co. 529-6600
 - Kinder-Morgan Pipeline Co. 1-888-844-5658

2. Utility service lines, poles, valve boxes, meters, and etcetera are to be adjusted as necessary by others prior to construction unless the plans specifically call for their adjustment by the Contractor or unless the plans specifically identify a utility to be adjusted by its owner during construction. Existing utilities and their location, as shown on the plans, represent the best information obtainable for design. The Contractor will be required to work around existing utilities within the right-of-way which do not conflict with proposed construction.

3. Rubble from the removal of miscellaneous structures and excess excavation which is to be wasted shall be disposed of on sites to be provided by the Contractor. These sites shall be approved by the Engineer as to suitability, appearance and site location. Locations, in the opinion of the Engineer, that will leave an unsightly appearance will not be approved. All disposal sites must be approved by the Kansas Department of Health and Environment. Material either stockpiled or disposed of in a flood plain would require a Kansas State Board of Agriculture permit. Any material dumped in waters of the United States or wetlands is subject to U.S. Corps. of Engineers permitting regulations. Any material buried or stockpiled beyond approved construction limits would require additional archaeological investigations unless buried in a previously approved borrow location.

4. Trees and shrubs in public right-of-way which are in direct conflict with proposed new construction shall be removed by the Contractor with the Engineer's approval. Trees and shrubs which are not in direct conflict with proposed new construction shall be saved and protected from damage.

5. The Contractor shall give all property owners and/or tenants of developed property abutting the construction of this project a minimum of ten (10) days notice prior to start of construction.

6. The Contractor shall be responsible for preserving property irons. The Contractor will be required to re-establish any property irons which are damaged or destroyed by his construction operations. Such irons shall be re-established by a licensed land surveyor in accordance with state laws.

7. All existing and proposed erosion control measures including silt fencing, erosion control mat, straw bales, inlet barriers, and const. entrance shall be maintained throughout construction by the contractor and until project is accepted by the City of Wichita. The on-site engineer shall complete weekly reports on the status of erosion control measures. The contractor shall be required to comply with maintenance and/or replacement of erosion control measures as determined by the on-site engineer until project is accepted by City of Wichita. Maintenance and/or replacement of erosion control measures to be paid by L.S. bid item "Site Restoration".

8. All areas disturbed during construction shall be seeded, mulched, and fertilized as follows (Permanent Seeding):

Seed: Kansas Premium Fescue Blend: 8 lbs./1000 sq. ft.
 Mulch: Prairie Hay: 2 tons/acre
 Fertilizer: 12-24-12: 850 lbs./acre

All costs associated with seeding, mulching, and fertilizing shall be included in bid item "Seeding". All seeding operations shall conform to City of Wichita Standard Specifications.

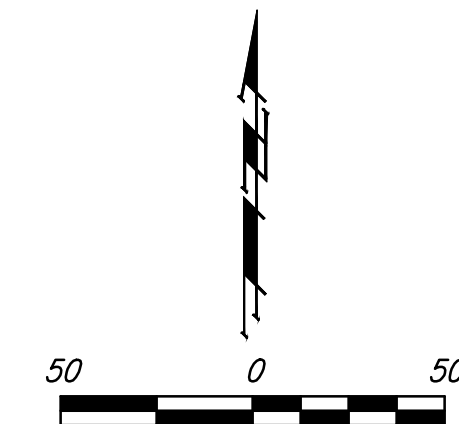
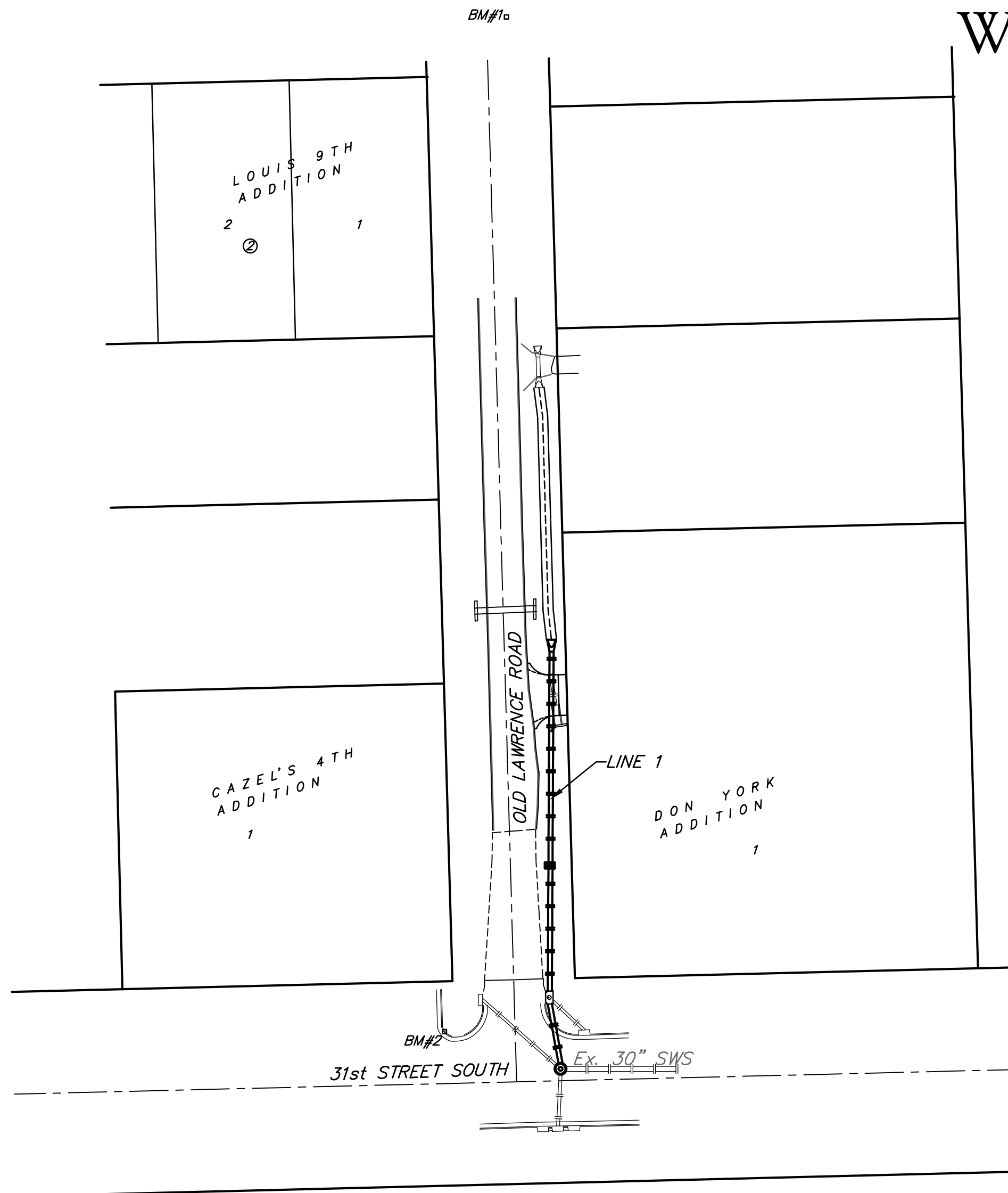
STORM WATER SEWER IMPROVEMENTS to serve OLD LAWRENCE ROAD & 31ST ST. S.

CITY OF WICHITA, KANSAS

Gary Janzen, P.E. Interim City Engineer
 Project Number
 468-84798
 O.C.A. Number
 133117

WATER LINE IMPROVEMENTS

Project Number
 448-90566
 O.C.A. Number
 636264



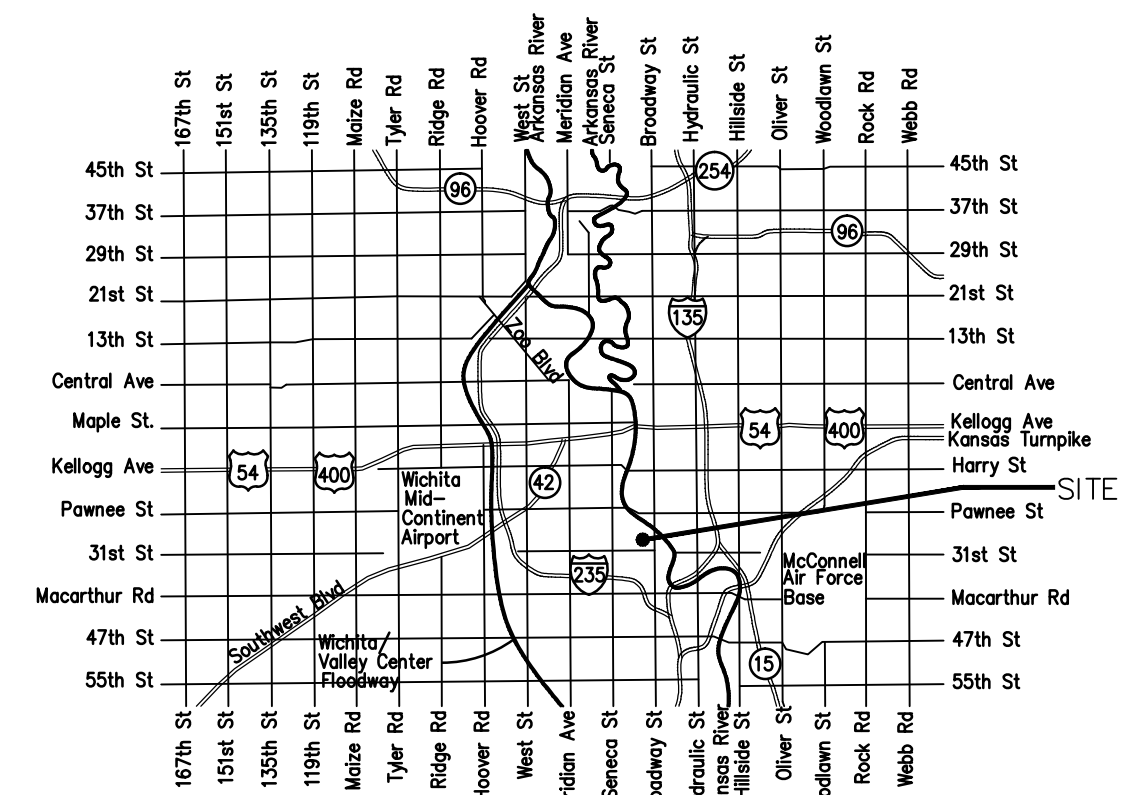
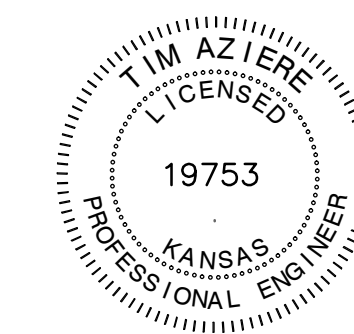
Benchmarks

BM #1: "□" Cut on concrete header, east side of brick street, Old Lawrence Road, 520' north of 31st Street South. Elev. = 1281.30 NAVD88

BM #2: "□" Cut on top of curb, west return, 4' west of wheelchair ramp, NW corner of Old Lawrence Road & 31st Street South. Elev. = 1280.47 NAVD88

Sheet Index

Title Sheet	1
SWS Line 1	2
Water Line Lowering	2A
Grading & Erosion Control Plan	3
Std. Type 1 Single Inlet Detail	4
Std. Drop Inlet Detail	5
Standard Manhole Detail	6
Ring & Cover Detail	7
Miscellaneous Details	8
Std. Drive Details	9
Erosion Control Details	10-13



Vicinity Map