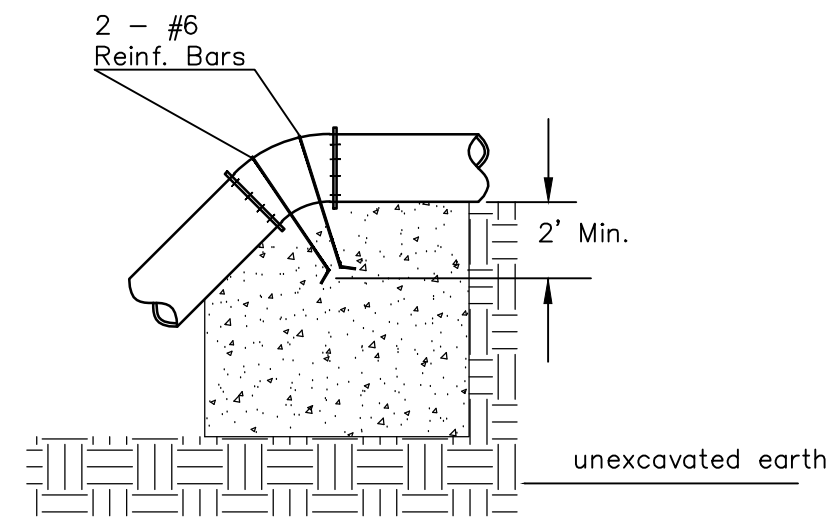


BENCHMARKS:
 BM #1: "□" Cut on concrete header, east side of brick street, Old Lawrence Road, 520' north of 31st Street South. Elev. = 1281.30 NAVD88

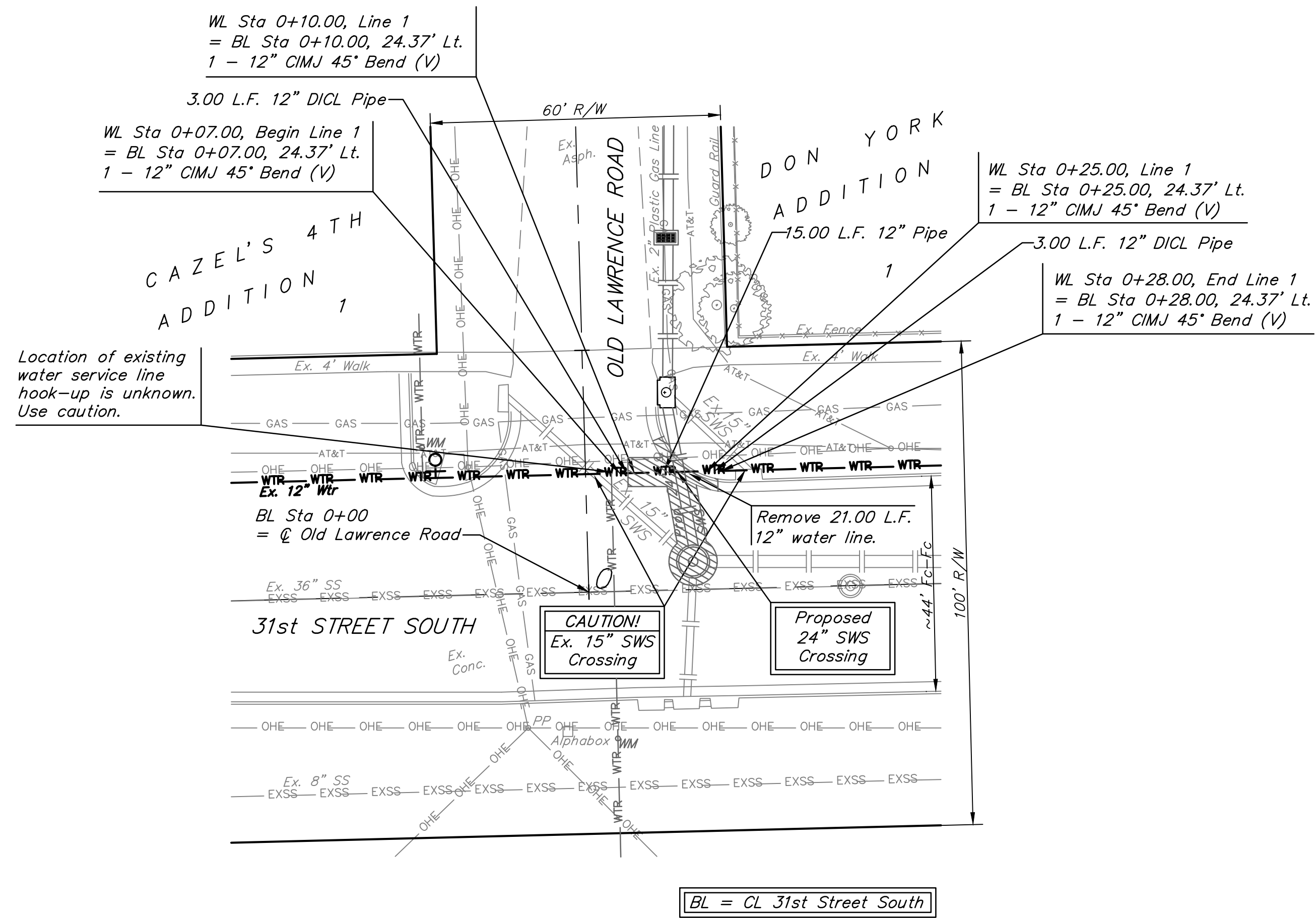
BM #2: "□" Cut on top of curb, west return, 4' west of wheelchair ramp, NW corner of Old Lawrence Road & 31st Street South. Elev. = 1280.47 NAVD88



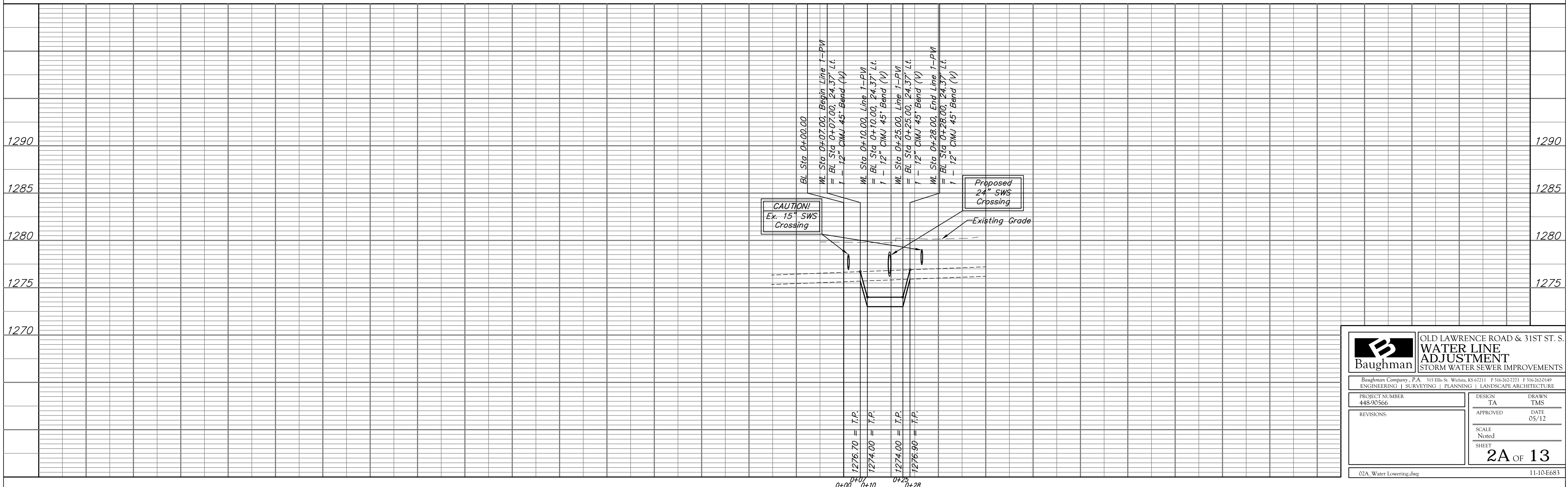
VERTICAL BEND


PIPE SIZE	THRUST AT FITTINGS IN TONS—AT 150#/IN ² P					
	PLUG	90°	45°	22 1/2'	11 1/4'	TEE
6"	2.8	3.95	2.15	1.09	.55	2.8
8"	4.9	6.95	3.75	1.90	.96	4.9
12"	11.4	16.1	8.75	4.45	2.25	11.4
16"	20.15	28.5	15.4	7.85	3.95	20.15
20"	31.15	44.0	23.85	12.15	6.10	31.15
24"	44.55	63.0	34.1	17.4	8.75	44.55

TYPICAL THRUST BLOCKS



BL = CL 31st Street South





Baughman

Baughman Company, P.A. 115 Ellis St. Wichita, KS 67211 P 316-263-7271 F 316-263-0149
ENGINEERING | SURVEYING | PLANNING | LANDSCAPE ARCHITECTURE

OLD LAWRENCE ROAD & 31ST ST. S.

WATER LINE ADJUSTMENT

STORM WATER SEWER IMPROVEMENTS

<small>PROJECT NUMBER</small> 448-90566	<small>DESIGN</small> TA
<small>REVISIONS:</small>	<small>DRAWN</small> TMS
	<small>APPROVED</small> DATE 05/12
	<small>SCALE</small> Noted
	<small>SHEET</small> 2A OF 13

02A_Water Lowering.dwg
11-10-E683