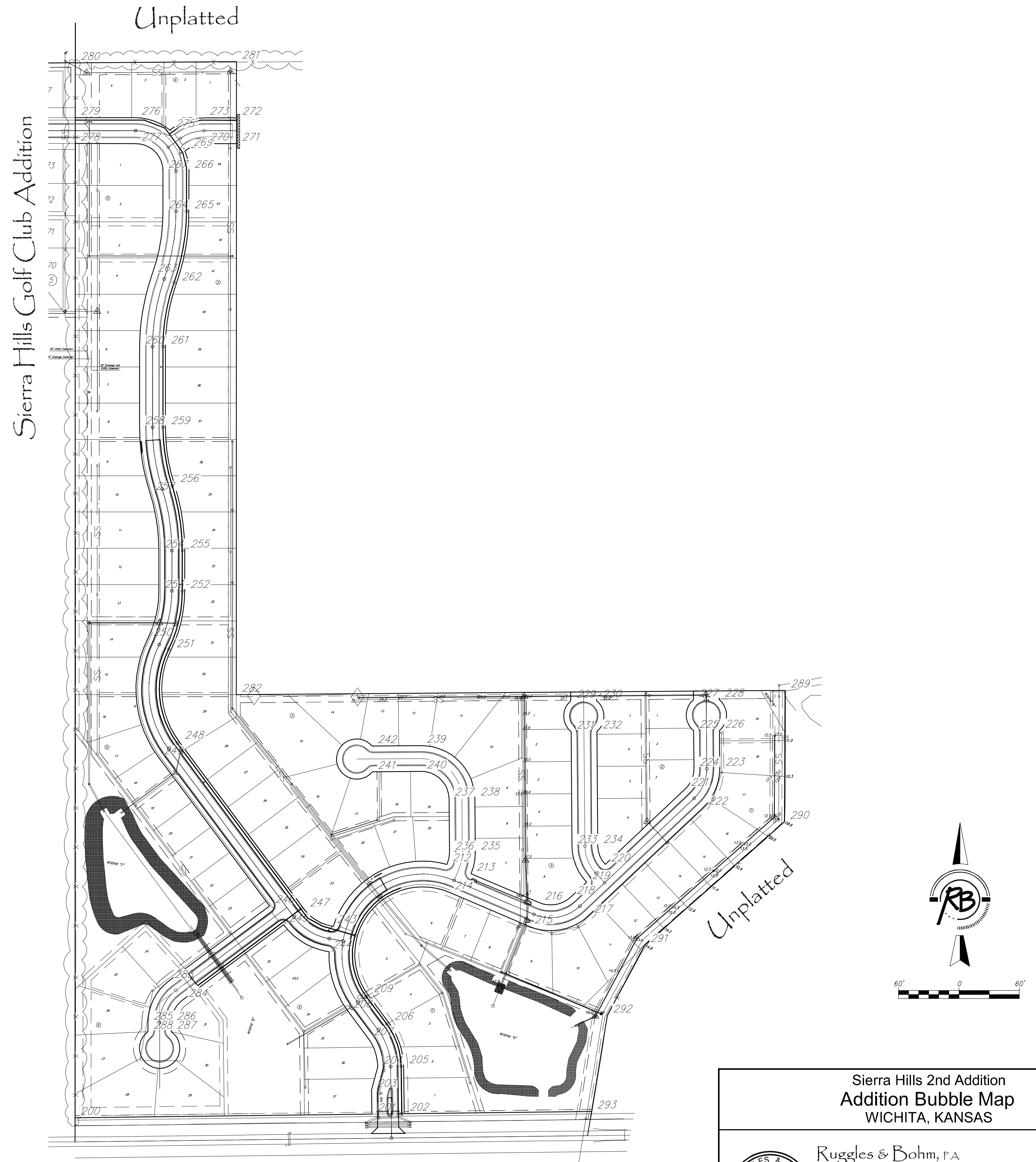


Point Table			
Point #	Northing	Easting	Description
200	17361.86	17360.23	Addition Corner
264	19610.56	17578.72	PT
328	18684.70	17626.51	L2 10+26.86 FH
209	17666.15	18087.48	PC
273	19842.53	17680.51	PT
337	19756.77	17627.43	L2 21+11.67 FH
250	18550.07	17540.72	PRC
314	17836.36	18007.19	5+06.66 FH
259	19074.94	17584.60	PT
323	17880.20	17920.36	L2 1+02.25 Tee
236	18019.62	18288.97	PT
245	17840.72	17877.45	Block Corner
309	17619.52	18049.90	2+76 Bend
222	18131.21	18917.95	PC
286	17597.66	17599.28	PT
350	19836.52	17760.63	L2 1+75 Blowoff
231	18319.48	18590.57	PI
240	18220.91	18219.35	PT
304	17364.96	18102.73	0+00 Main Connect
217	17863.33	18634.26	PT
281	19981.97	17760.80	Addition Corner
345	17721.78	17707.93	L2 2+65 Bend
226	18322.45	18958.56	PI
290	18096.18	19119.67	Addition Corner
203	17430.88	18095.92	PI
267	19710.56	17578.74	PC
331	19074.94	17578.60	L2 14+22.08 PT
212	17990.54	18282.74	Block Corner
276	19842.57	17510.77	PT
340	19836.57	17531.71	L2 22+41.67 Bend
253	18668.85	17568.51	PT
317	17953.04	18094.43	6+55 Bend
262	19432.00	17611.82	PRC
326	18524.35	17592.71	L2 8+61.29 PRC
239	18284.91	18218.84	PT
248	18294.70	17618.73	PC
312	17642.19	18033.47	3+04 Bend
257	18912.11	17546.10	PRC
321	17836.82	17974.93	L2 0+31 Bend
234	18036.35	18656.85	PT
243	17837.65	17996.23	PC
307	17487.89	18117.22	1+24.92 Bend
220	17990.21	18675.41	Block Corner
284	17654.56	17627.83	PC
348	19836.53	17673.33	L2 0+87.70 Bend
229	18396.32	18589.95	PI
293	17377.56	18641.59	Addition Corner
206	17597.66	18138.56	PT

Point Table			
Point #	Northing	Easting	Description
270	19778.53	17680.49	PT
334	19434.02	17606.17	L2 17+84.31 PRC
215	17836.81	18486.05	PC
279	19842.60	17360.77	Block Corner
343	17742.70	17735.99	L2 2+30 Bend
224	18227.73	18895.32	PT
288	17575.19	17541.27	PI
201	17370.88	18096.65	Block Corner
265	19610.54	17642.72	PT
329	18768.83	17626.53	L2 11+10.99 PC
210	17773.74	17990.26	Block Corner
274	19817.21	17602.73	PC
338	19801.77	17594.63	L2 21+67.35 Tee
251	18521.69	17598.09	PRC
315	17937.80	18074.63	6+30 Bend
260	19274.96	17520.64	PC
324	18197.19	17683.96	L2 4+97.69 FH
237	18153.46	18287.90	PC
246	17887.21	17842.78	Block Corner
310	17622.73	18047.51	2+80 Bend
223	18228.24	18959.32	PT
287	17575.17	17599.27	PI
232	18320.00	18654.57	PI
241	18219.93	18097.75	PI
305	17370.96	18102.65	0+06 FH
218	17909.86	18590.32	PT
282	18411.22	17760.45	Addition Corner
346	17689.50	17664.64	L2 3+19 FH
227	18398.77	18893.94	PI
291	17790.35	18773.39	Addition Corner
204	17488.64	18111.21	PC
268	19760.13	17633.08	Block Corner
332	19224.56	17578.63	L2 15+71.69 FH
213	17967.35	18342.42	Block Corner
277	19778.57	17510.75	PT
341	19836.60	17360.77	L2 24+12.61 Connect to Exist
254	18768.85	17568.53	PC
318	17955.82	18098.59	6+60 Bend
263	19453.49	17551.54	PRC
327	18668.83	17626.51	L2 10+10.99 PT
208	17627.89	18036.17	PC
272	19842.52	17760.77	Block Corner
336	19718.24	17636.74	L2 20+72.03 Bend
249	18256.44	17567.43	PC
313	17828.35	18004.75	4+98.29 Tee
258	19074.96	17520.60	PT
322	17857.61	17937.21	L2 0+74.07 Bend
235	18020.13	18352.97	PT



**Sierra Hills 2nd Addition  
Addition Bubble Map  
WICHITA, KANSAS**

 <b>Ruggles &amp; Bohm, P.A.</b> Engineering, Surveying, Land Planning 924 North Main Wichita, Kansas 67203 www.rbkansas.com	(316) 264-8008 (316) 264-4621 fax E-mail: info@rbkansas.com	DESIGN EJG	RB JOB 320BEE SHEET 12 OF 13
		DRAWN EJG	
DRAWING FILE Water {Addition Bubble Map}	PROJECT NUMBER 448-92550	DATE	