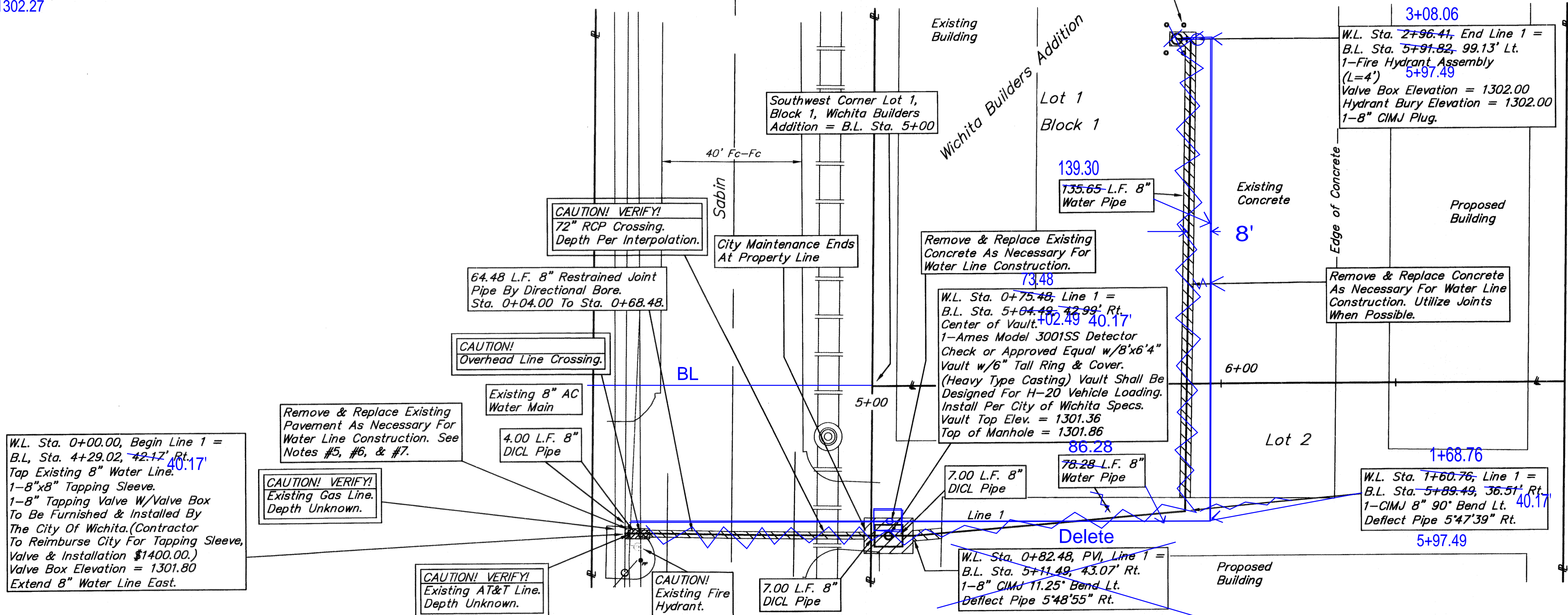
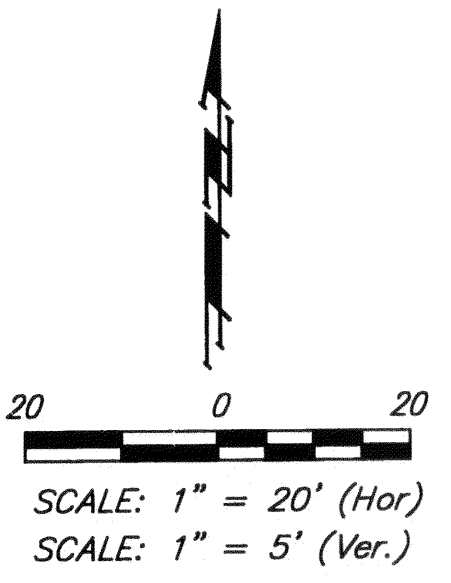


Benchmark

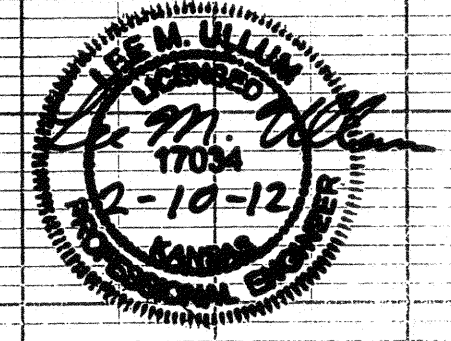
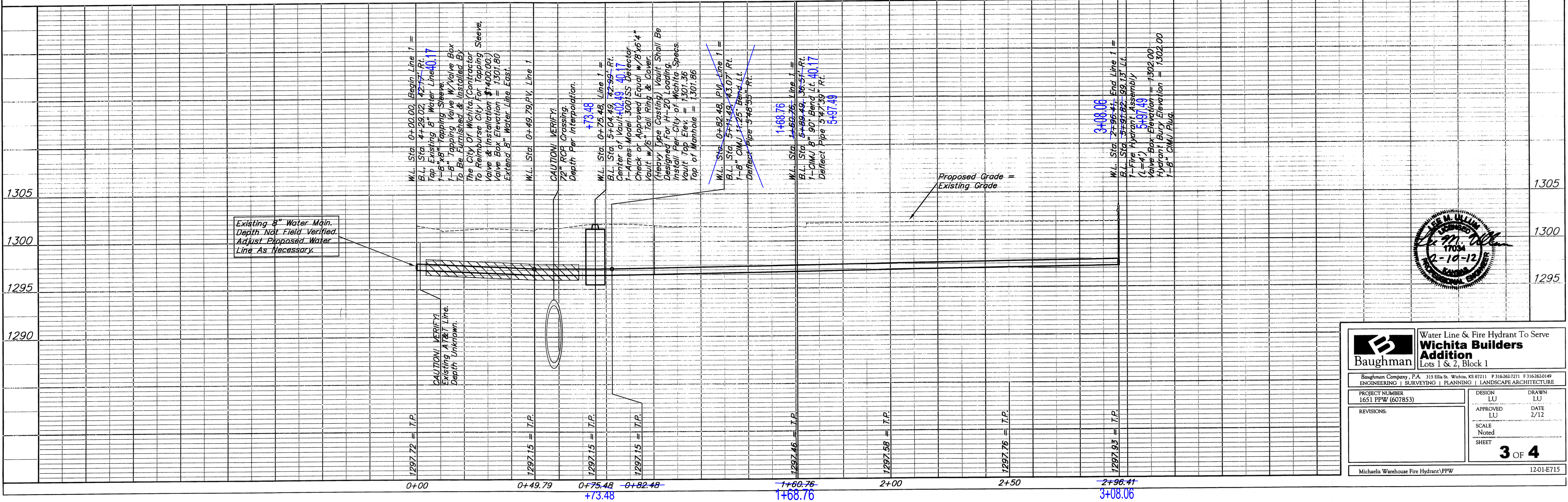
Benchmark - Railroad Spike in Power Pole.
Elevation = 1301.72 (NAVD 88)
1302.27



Contractor Shall Follow All Applicable Best Management Practices (BMP) For Erosion Control.

Contractor To Use Extreme Caution When Excavating Near Utility Lines. Contractor To Hand Dig To Expose All Utility Lines Prior To Construction. Verify Depth To Determine Conflict If Any.

NOTE: Sand Backfill, Flush & Vibrate Under All Pavement.



		Wichita Builders Addition Water Line & Fire Hydrant To Serve Lots 1 & 2, Block 1	
Baughman Company, P.A. 315 Ellis St. Wichita, KS 67211 P 316-262-7271 F 316-262-0149 ENGINEERING SURVEYING PLANNING LANDSCAPE ARCHITECTURE			
PROJECT NUMBER 1651 PPW (607853)	DESIGN LU	DRAWN LU	DATE 2/12
REVISIONS:	APPROVED LU	SCALE Noted	SHEET 3 OF 4
Michaels Warehouse Fire Hydrant/PPW			12-01-E715