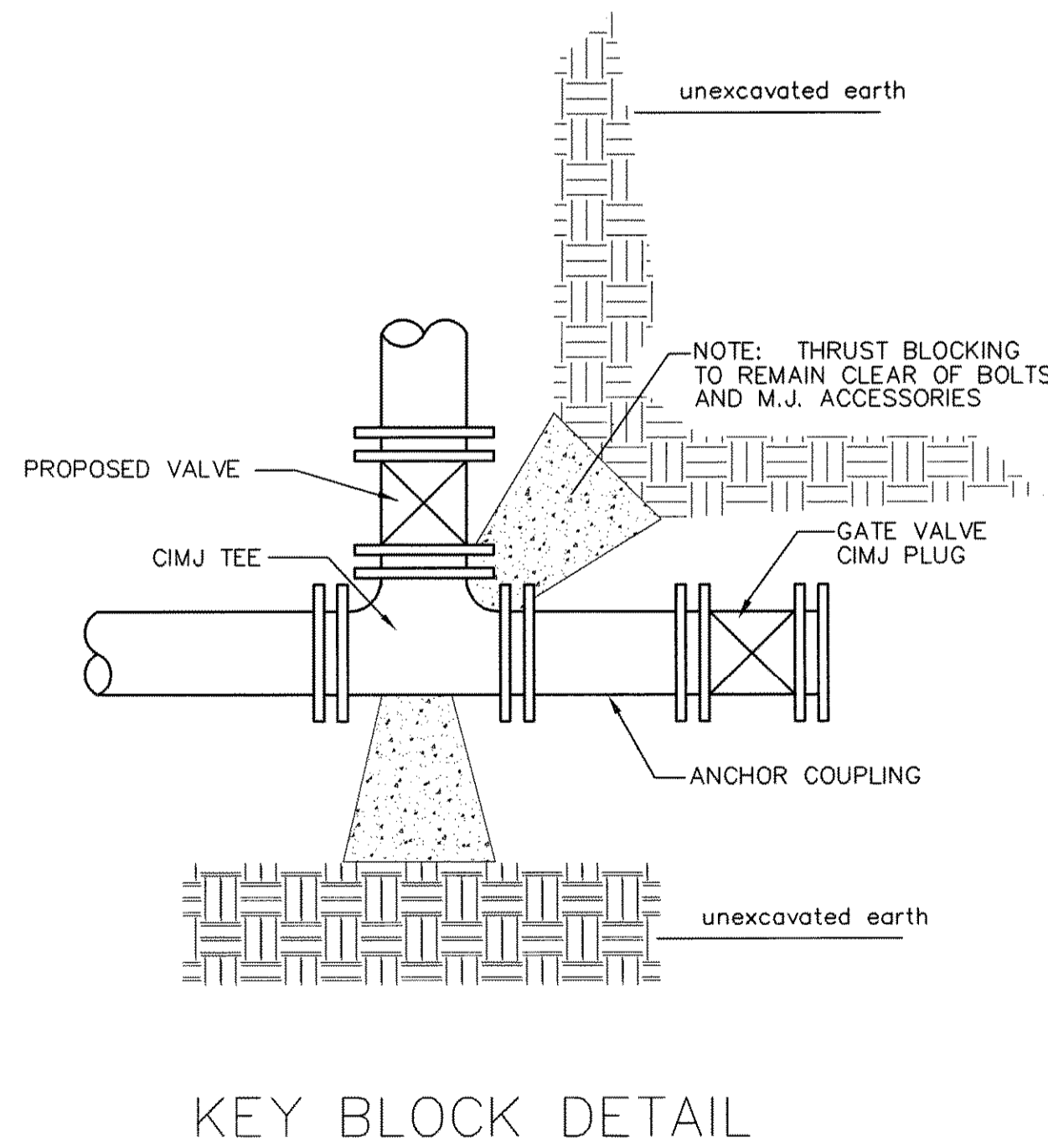


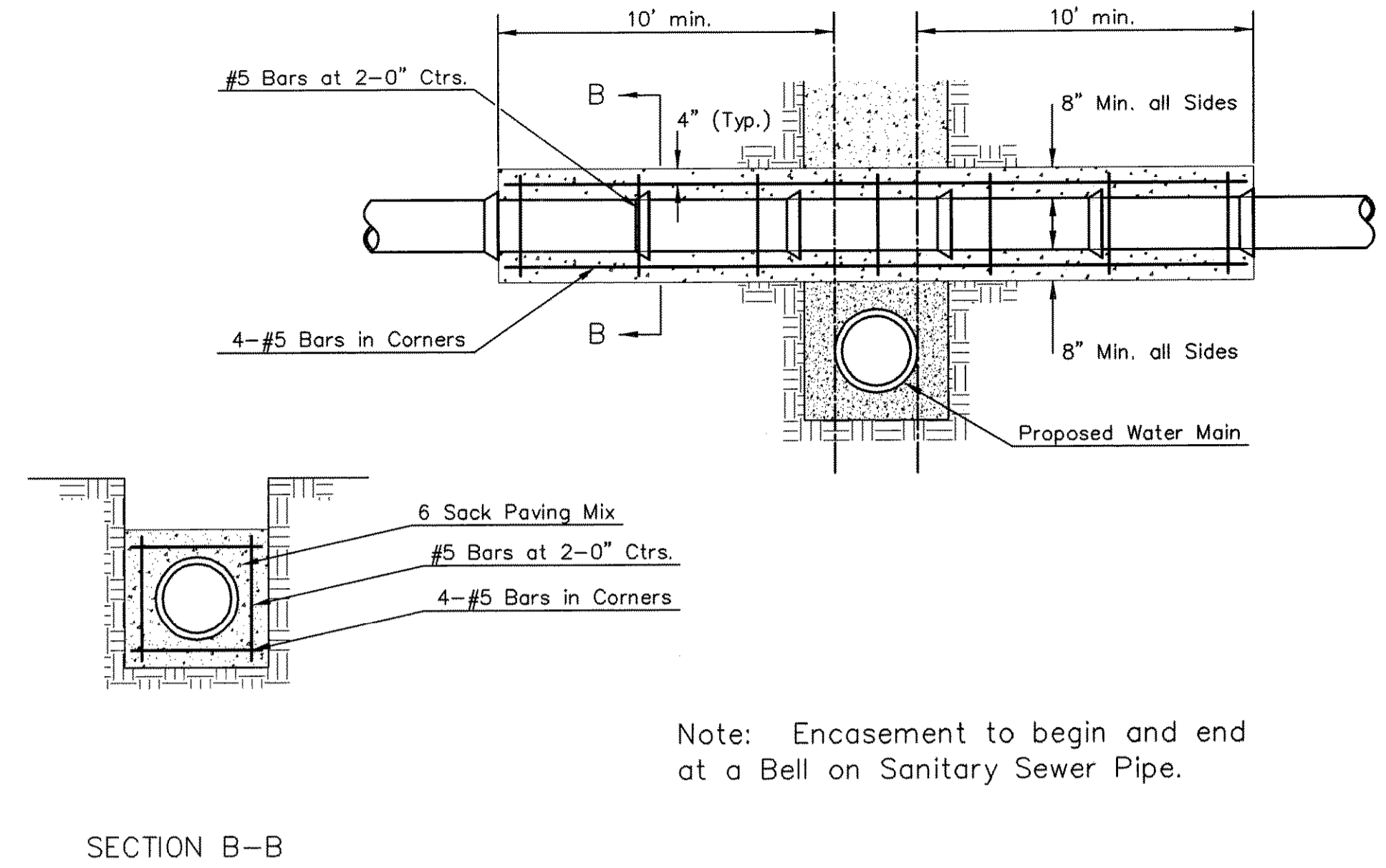
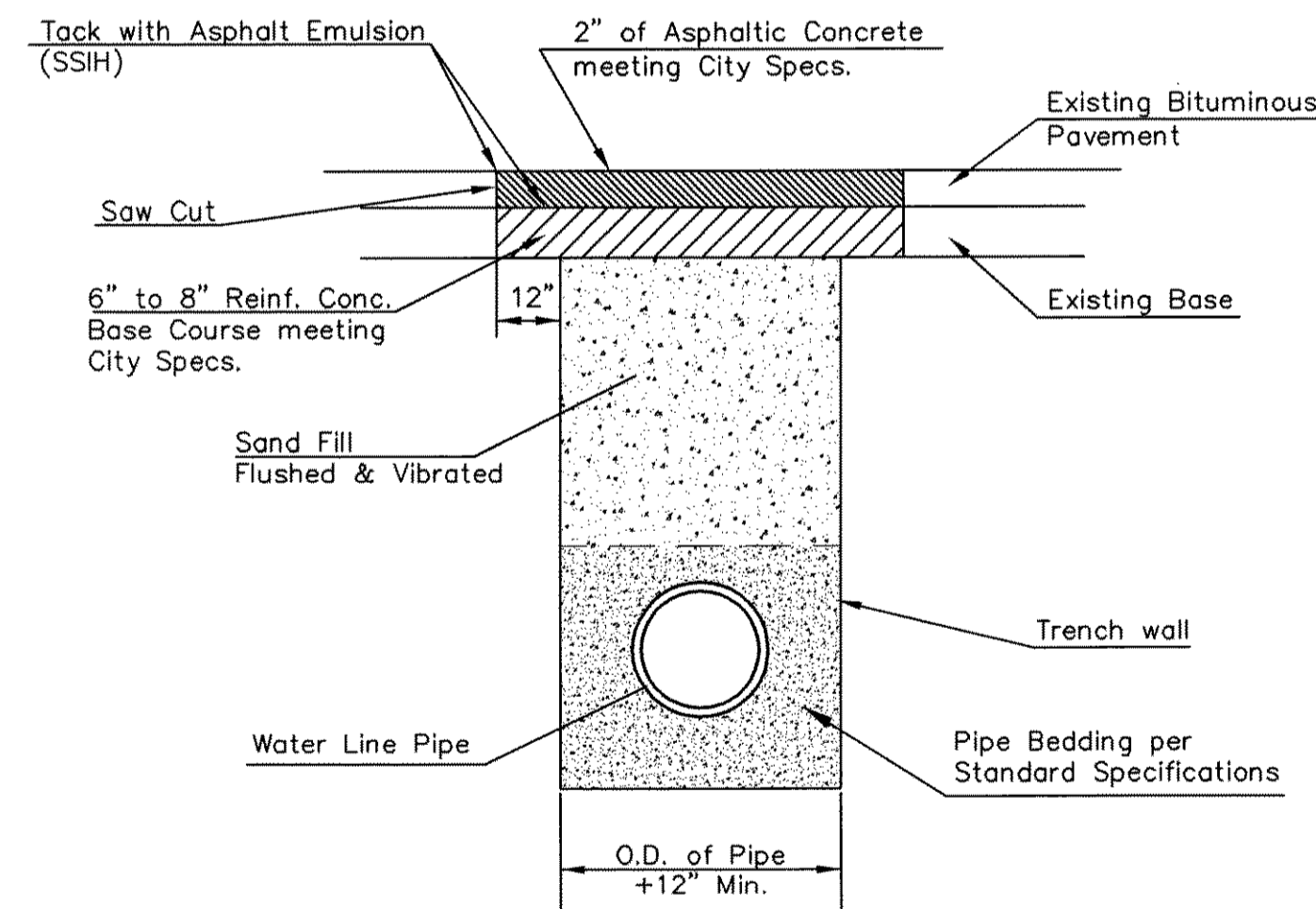
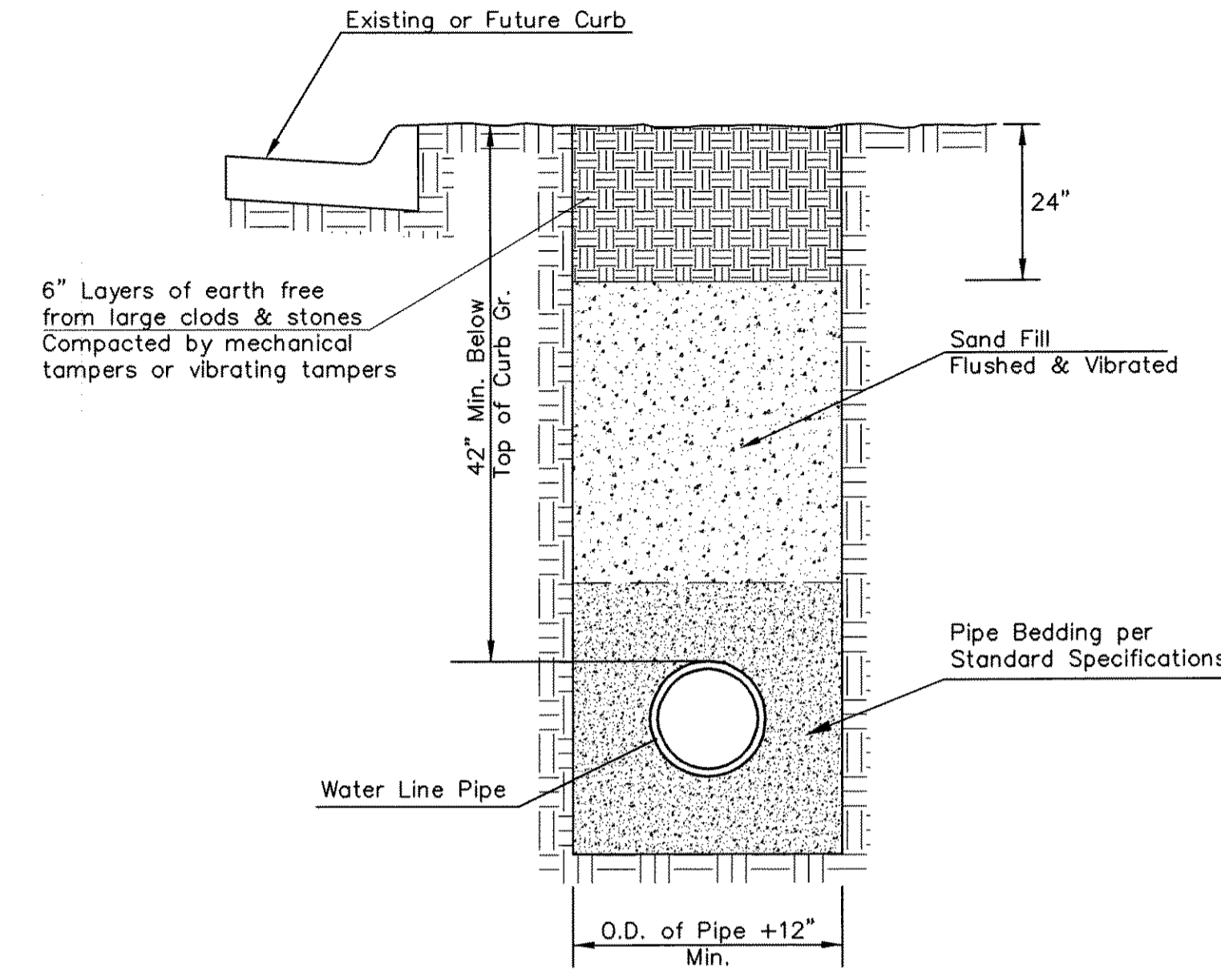
PIPE SIZE	THRUST AT FITTINGS IN TONS—AT 150#/IN <sup>2</sup> P					
	PLUG	90°	45°	22 1/2°	11 1/4°	TEE
6"	2.8	3.95	2.15	1.09	.55	2.8
8"	4.9	6.95	3.75	1.90	.96	4.9
12"	11.4	16.1	8.75	4.45	2.25	11.4
16"	20.15	28.5	15.4	7.85	3.95	20.15
20"	31.15	44.0	23.85	12.15	6.10	31.15
24"	44.55	63.0	34.1	17.4	8.75	44.55

TYPICAL THRUST BLOCKS



TRENCH COMPACTION IN ROAD RIGHT-OF-WAY

PAVEMENT REPLACEMENT & TRENCH COMPACTION UNDER EXISTING AND PROPOSED CITY ROADS  
\* UNLESS OTHERWISE NOTED ON PLANS



Note: Encasement to begin and end at a Bell on Sanitary Sewer Pipe.

REINFORCED CONCRETE ENCASEMENT OF SANITARY SEWER

**AS BUILT**

Contractor: Fire Protection Services  
Project Inspector: Tom Jones

**kemiller engineering**  
516 S. Market, Wichita, KS 67202 (316)284-0242

CITY OF WICHITA  
PUBLIC WORKS & UTILITIES ENGINEERING DIVISION

MISCELLANEOUS WATER DETAILS

CITY ENGINEER  
**JAMES L. ARMOUR, P.E., L.S.**

PROJECT NUMBER 1656 PPW	OCA NUMBER (607853)	DATE 01/2012
----------------------------	------------------------	-----------------

CITY ENGINEER'S OFFICE  
CITY HALL - SEVENTH FLOOR  
455 NORTH MAIN STREET  
WICHITA, KANSAS 67202-1620  
(316) 268-4501

SHEET  
4 of 9



project no. 11279.00  
The drawing and all information hereon is the exclusive property of Howard & Helmer Architects P.A. and is not to be copied or used in any way without the express written consent of Howard & Helmer Architects P.A. All drawings, specifications, ideas, designs and arrangements appearing herein constitute the original and unpublished Work of the Architect.  
Copyright © 2012 Howard & Helmer Architects P.A.

BOMBARDIER FLIGHT TEST CENTER  
BUILDING B6  
ONE LEARJET WAY  
WICHITA, KANSAS

C-7.4

Save: 04-04-2012 10:45:09 AM by JAW  
Plot: Scale: 1:1 04-04-2012 10:45:17 AM by JAW  
C:\2011\1139A\006\Site\006\Site.dwg (1139A-006-C7-4-MISC WL DETAILS)