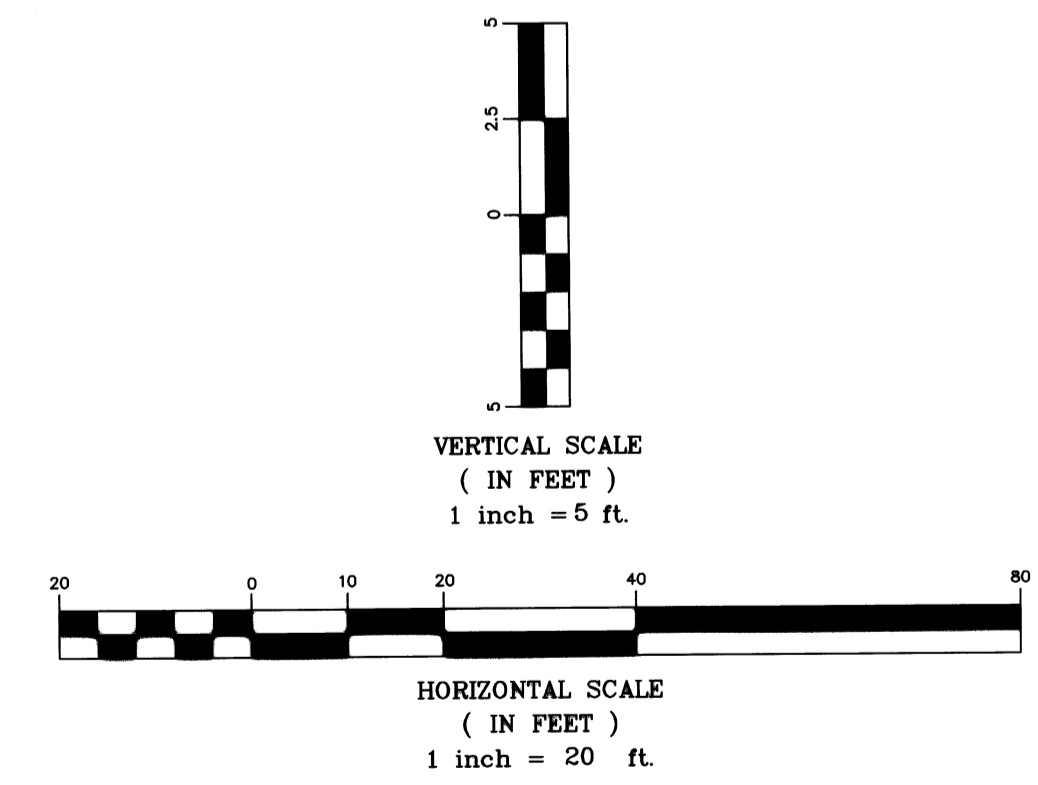
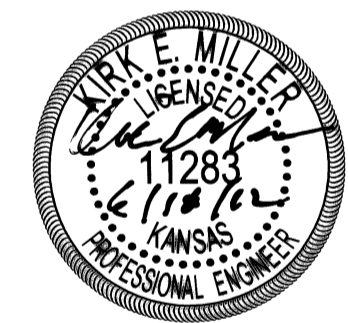
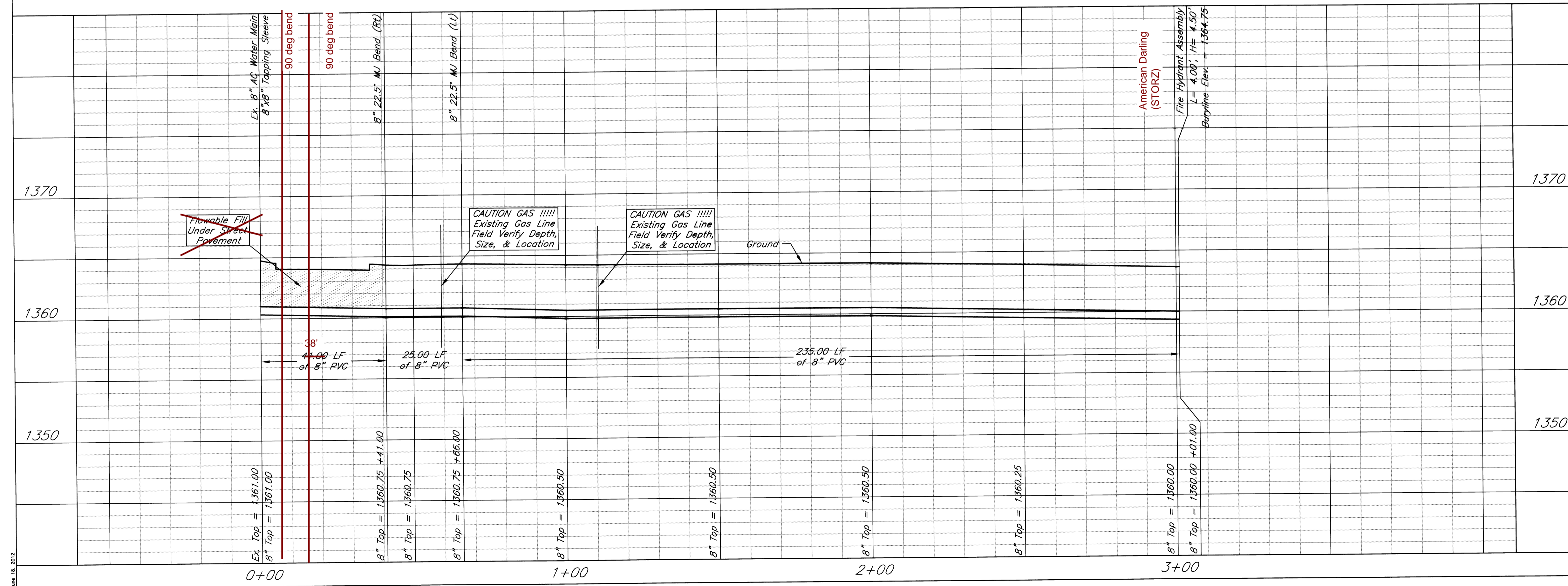
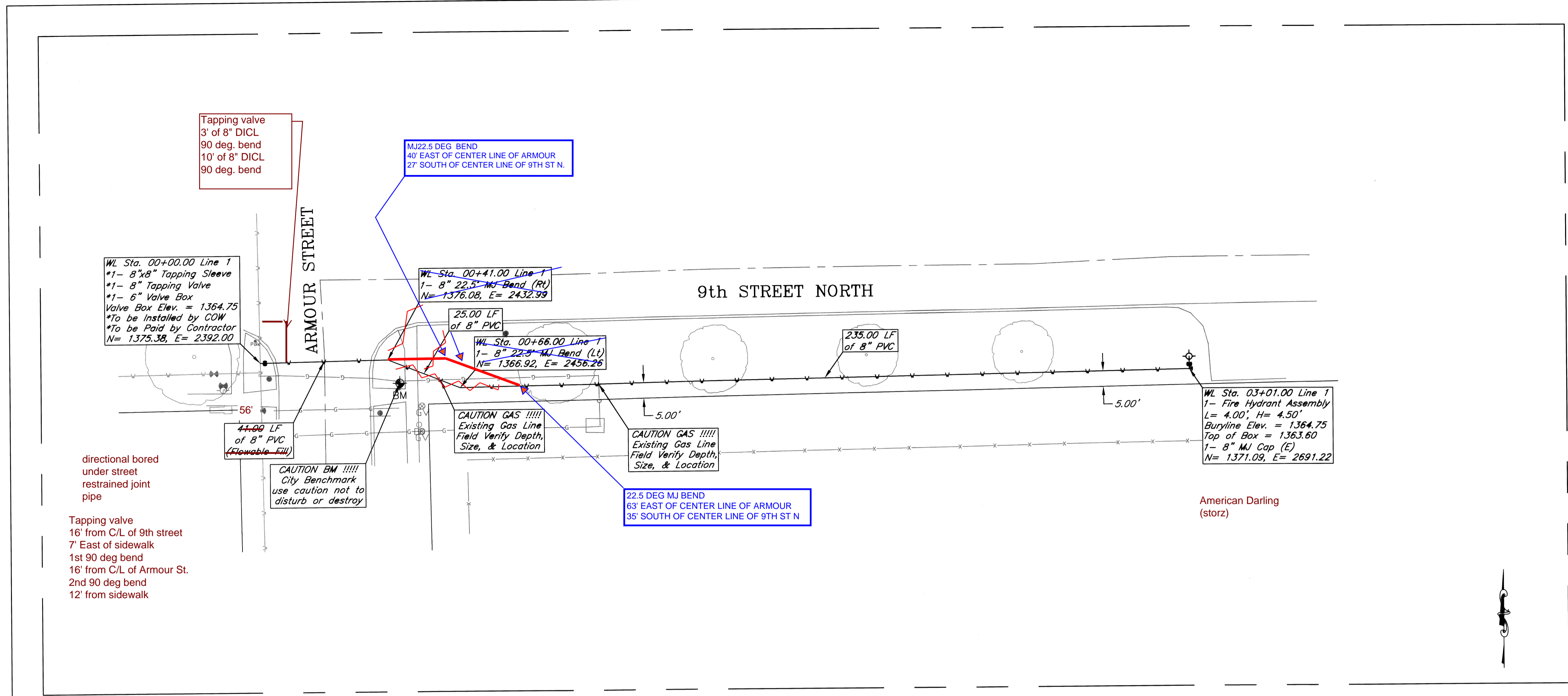


General Note:

- Station 00+00.00 (8"x8" Tapping Sleeve)
Tapping Sleeve to be at a minimum
2.0 feet from nearest fitting.



Lot 1, Block A, Harris Elementary Addition
Line 1
Wichita, Kansas



PROJECT NUMBER			
KEM NO. 12067	FILE	DATE 06/18/12	SHEET 2.0
DESIGN KM	DRAWN NS	REVISED	

JUN 18, 2012