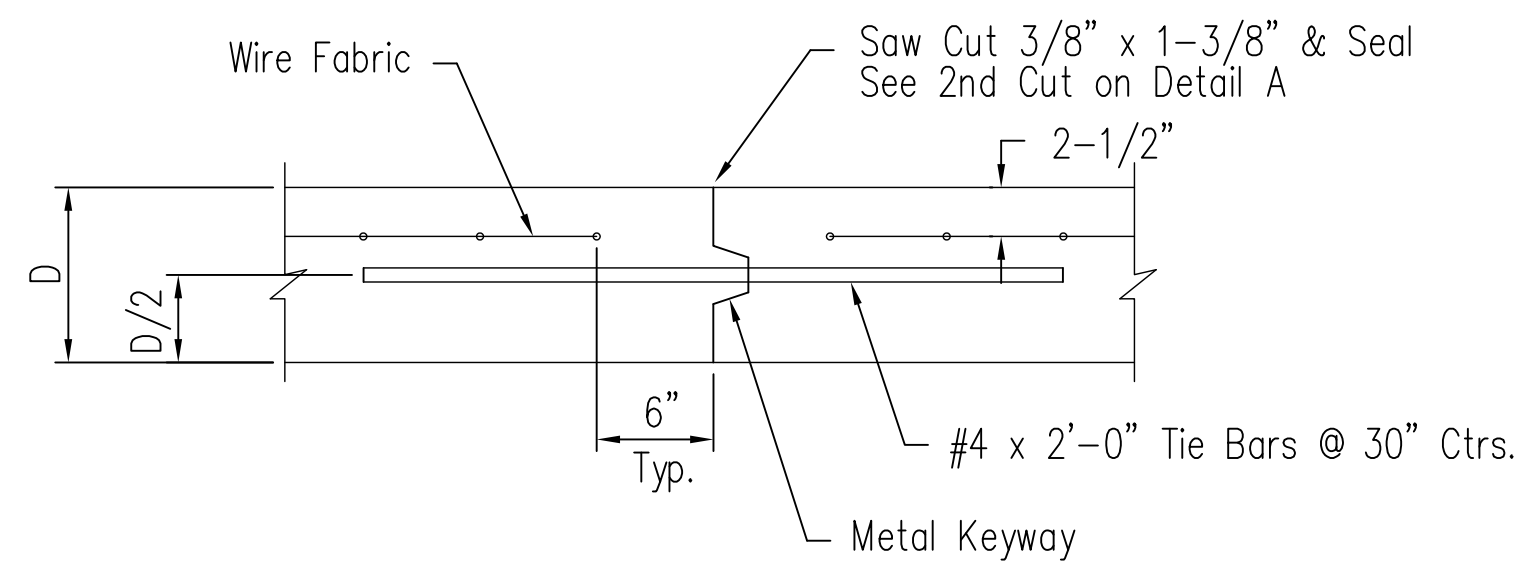
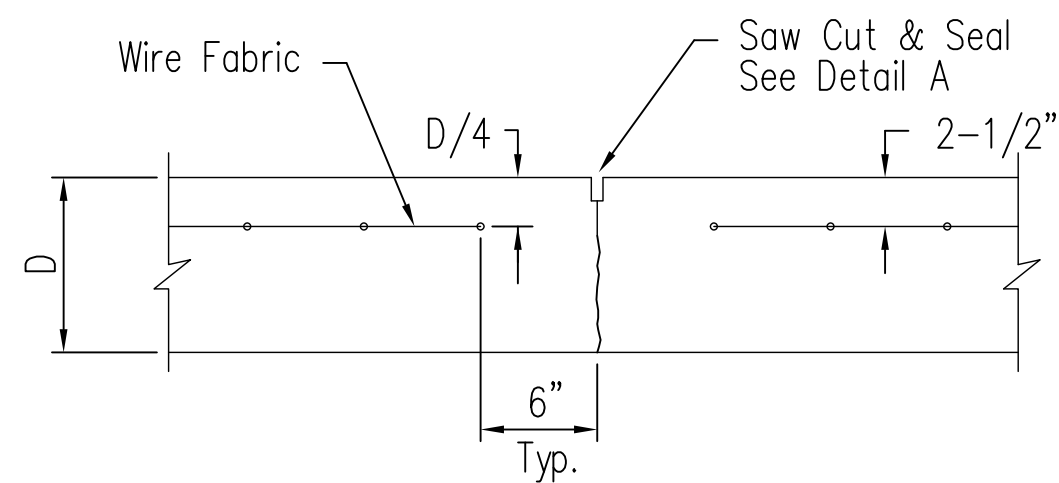


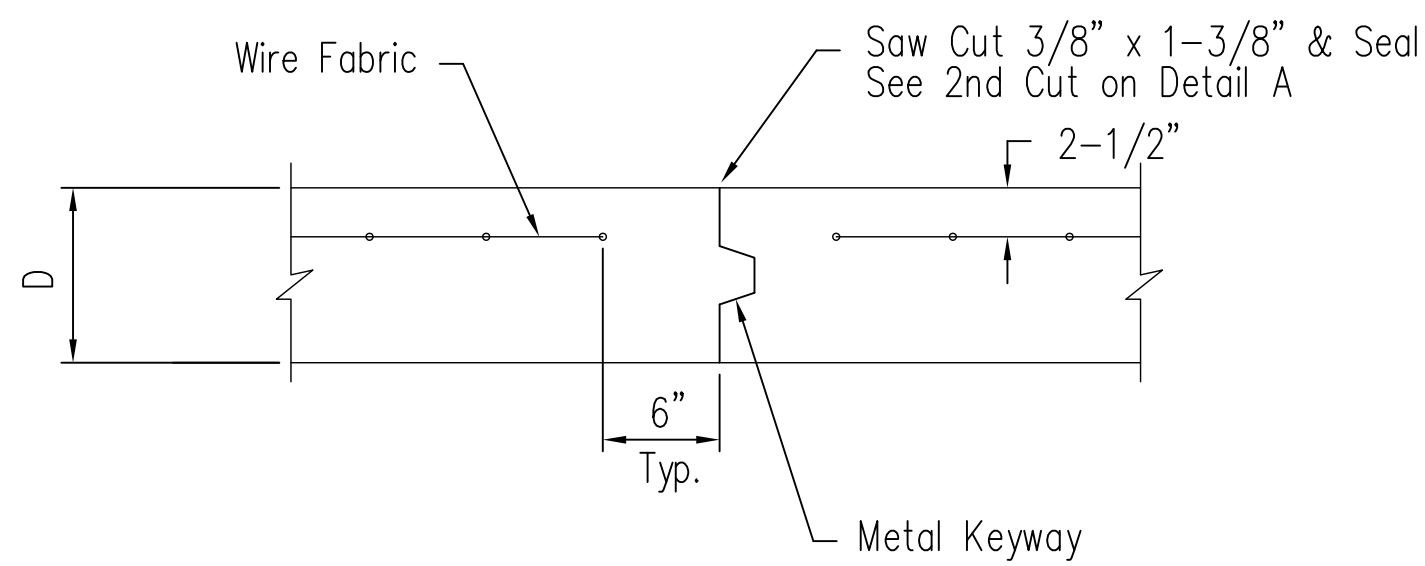
LONGITUDINAL JOINT DETAIL (L.J.)



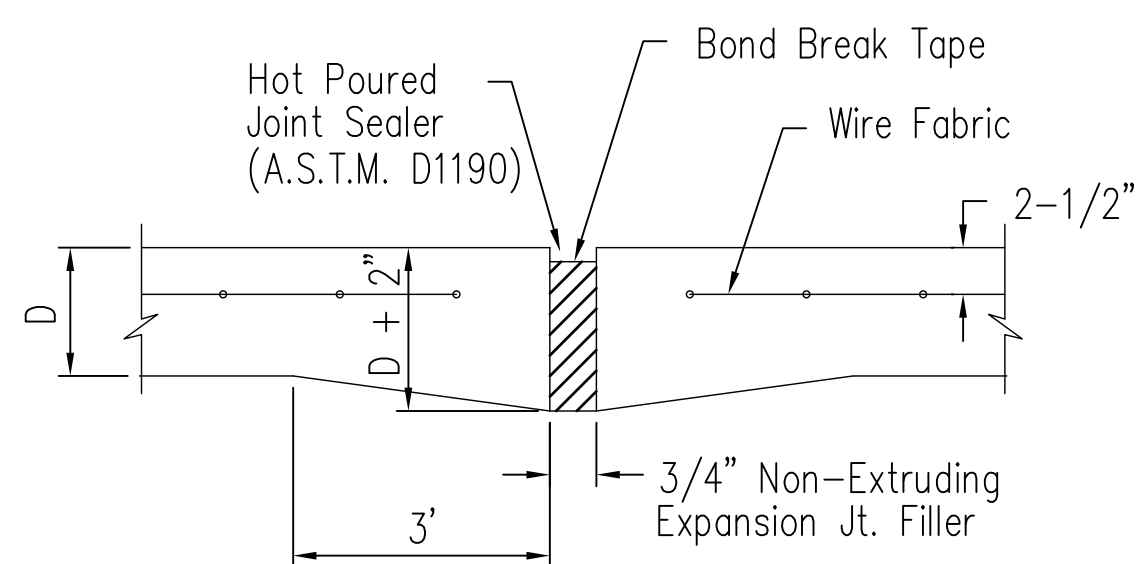
OPT. LONGITUDINAL JOINT DETAIL (L.J.)



CONTRACTION JOINT DETAIL (C.J.)

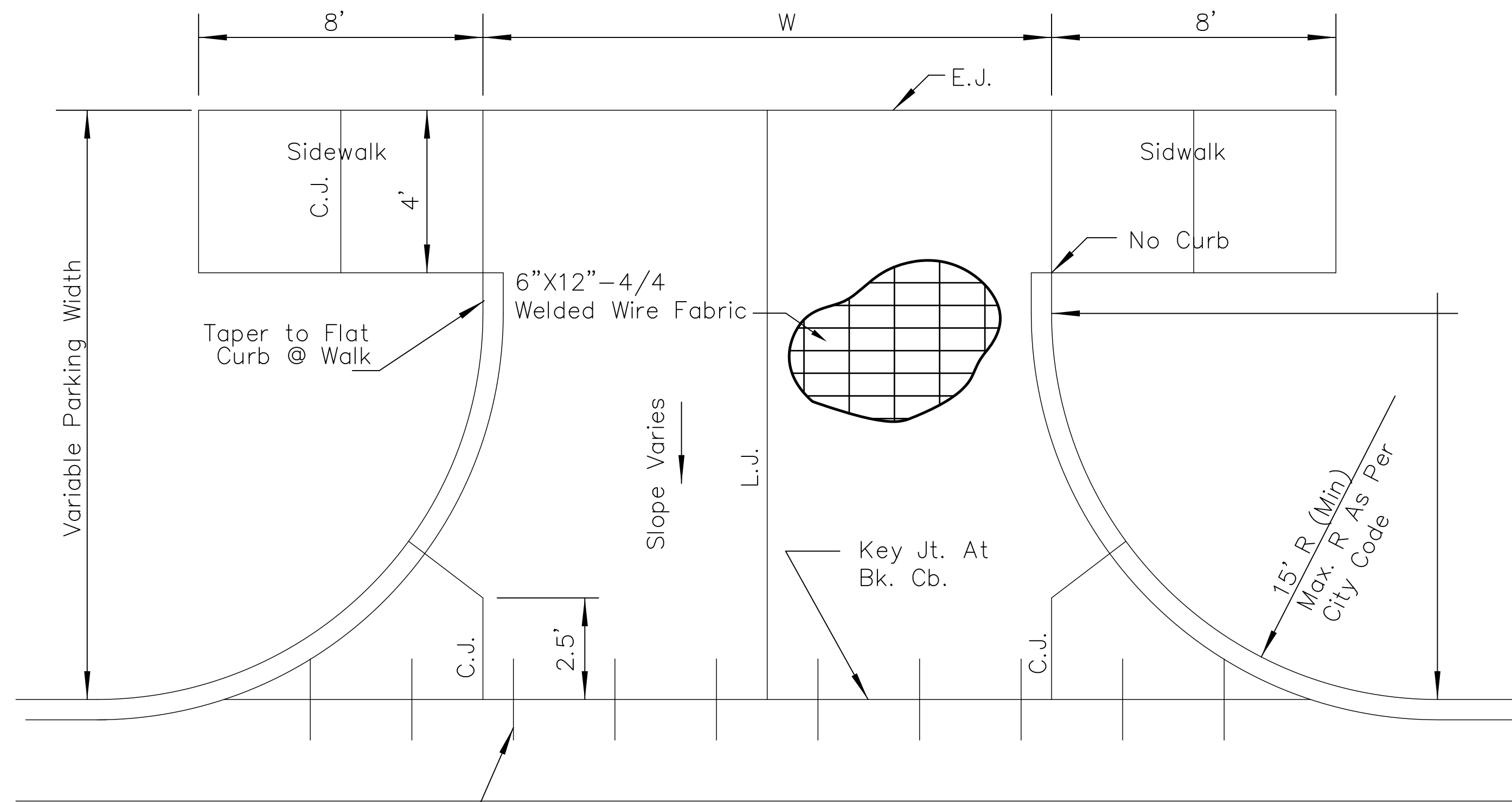


OPTIONAL CONTRACTION JOINT



EXPANSION (ISOLATION) JOINT

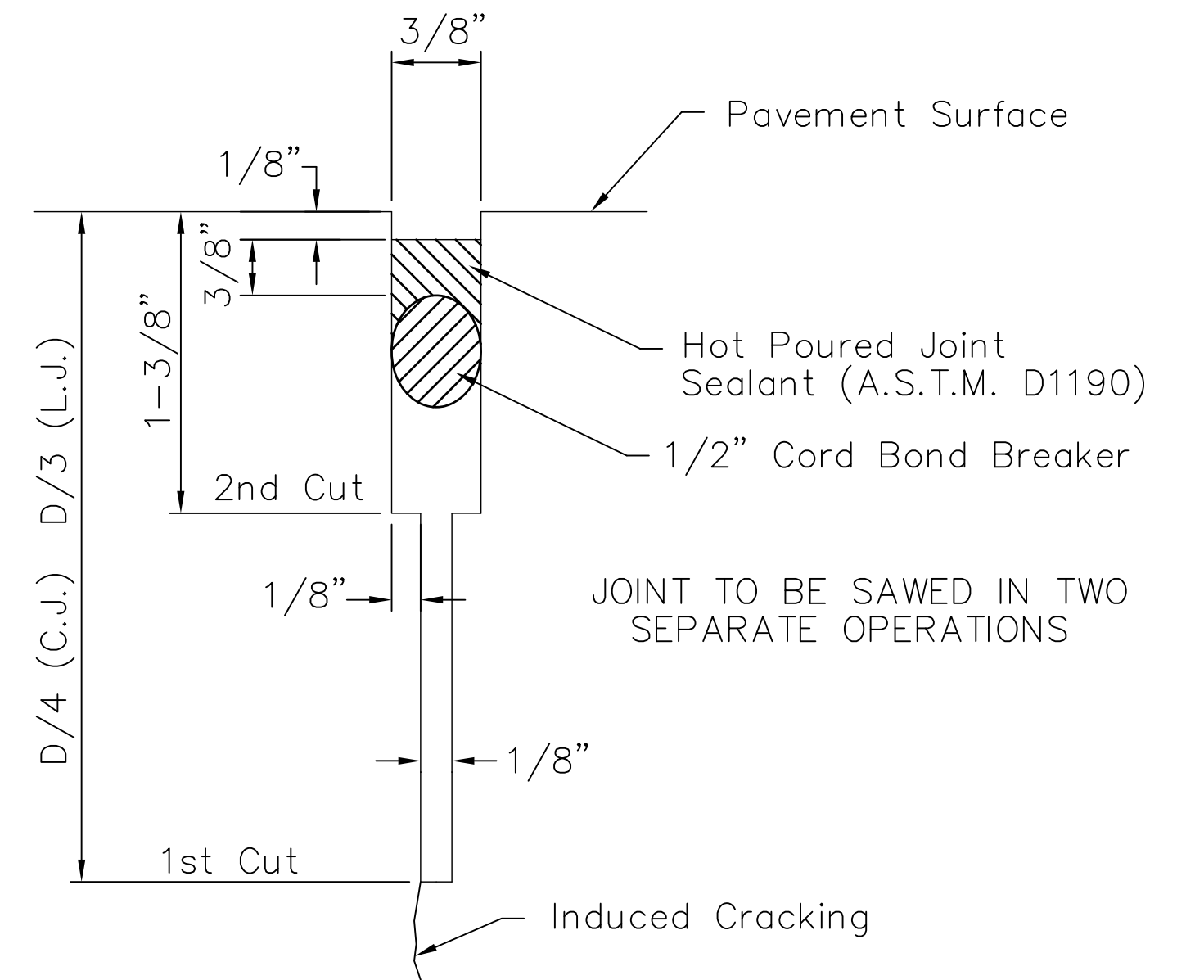
NOTE: Extra Thickness to be Subsidiary to Price of Square Yards Pavement



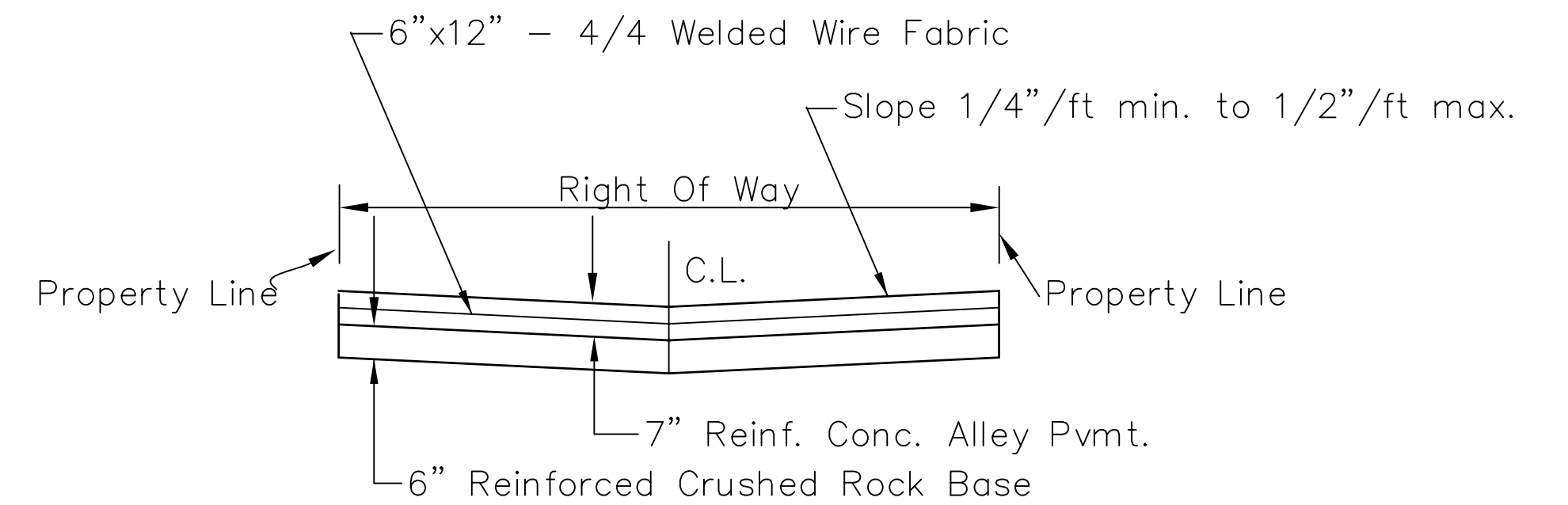
#4 Dowels 2' Long On 2.5' Ctrs.

Use Ramp-Type Approach when distance between fc. wk. & bk. cb. is 8'-0" or less. Where parking width is 8'-0" or less ramp shall be constructed full wtd.

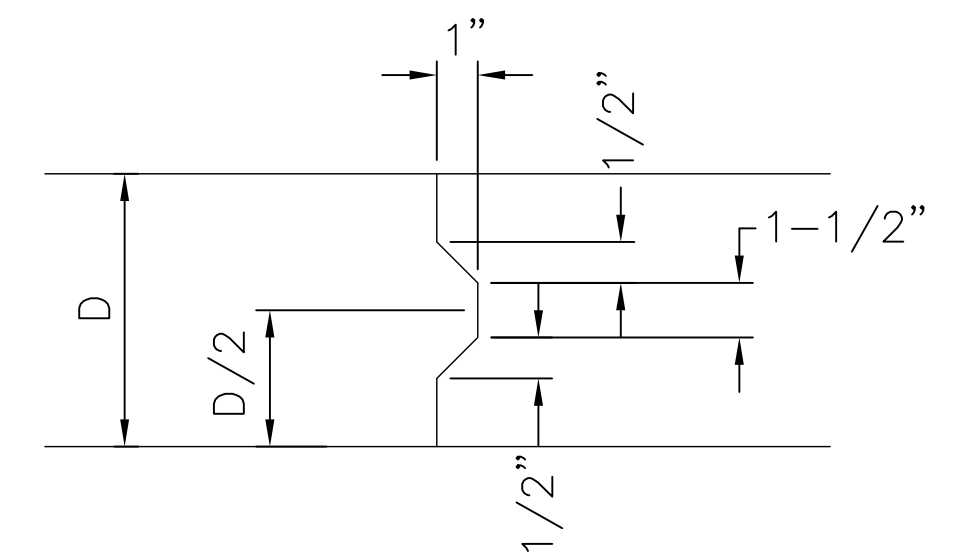
ALLEY APPROACH DETAIL



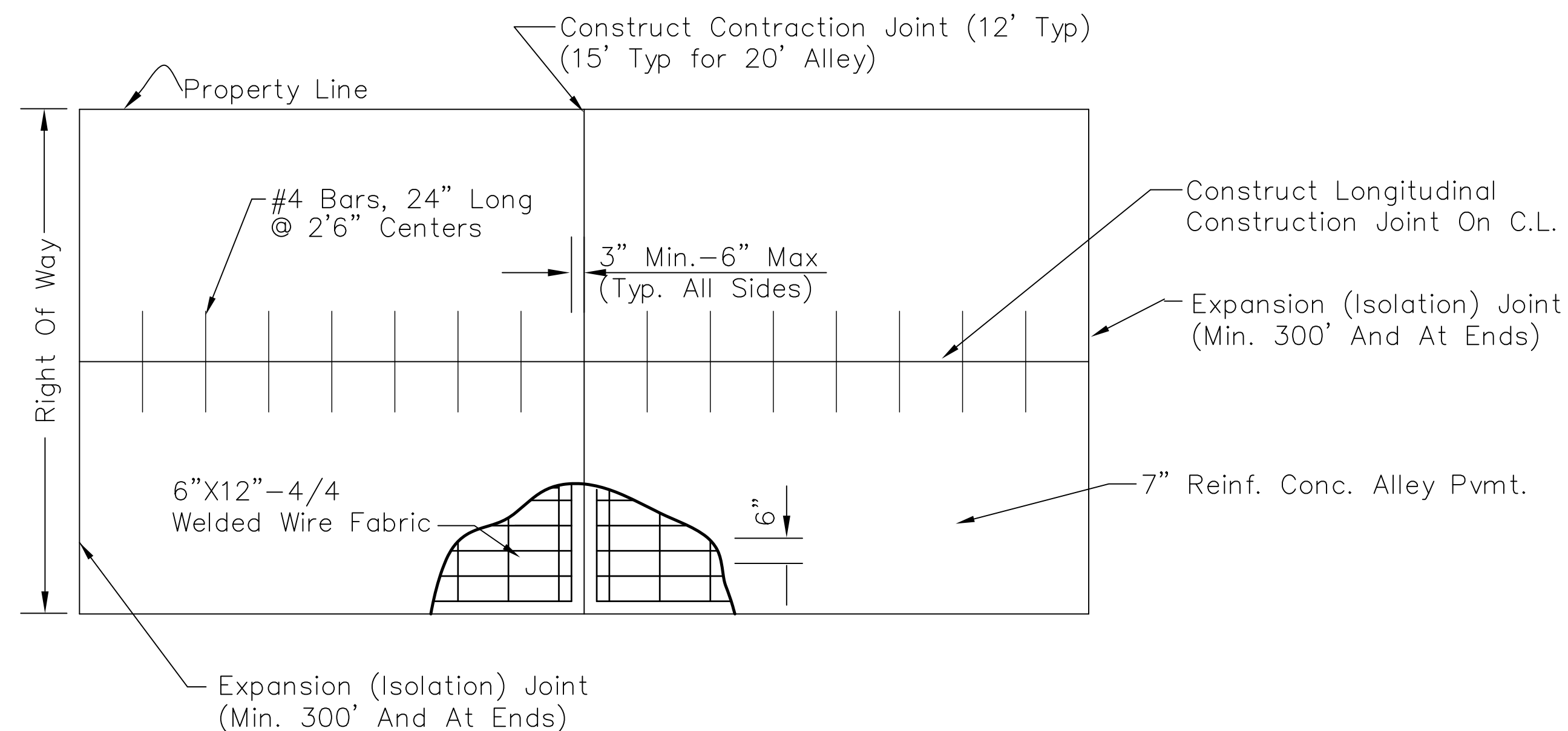
SAW JOINT DETAIL (Detail A)



TYPICAL PAVEMENT SECTION



KEYWAY DETAIL



SLAB REINFORCEMENT DETAIL

HSIP Proj. No. N049 (301)

<p>CITY OF WICHITA PUBLIC WORKS ENGINEERING</p>	REINFORCED CONCRETE ALLEY PAVING		
	CITY ENGINEER JAMES L. ARMOUR, P.E., L.S.		
	PROJECT NUMBER	OCA NUMBER	DATE
	CITY ENGINEER'S OFFICE CITY HALL - SEVENTH FLOOR 455 NORTH MAIN STREET WICHITA, KANSAS 67202-1620 (316) 268-4901 (316) 268-4114 FAX		DESIGN DRAWN SHEET 13 of 59

REV. 3-08-02, MCG
ALLEY PAVING.DWG