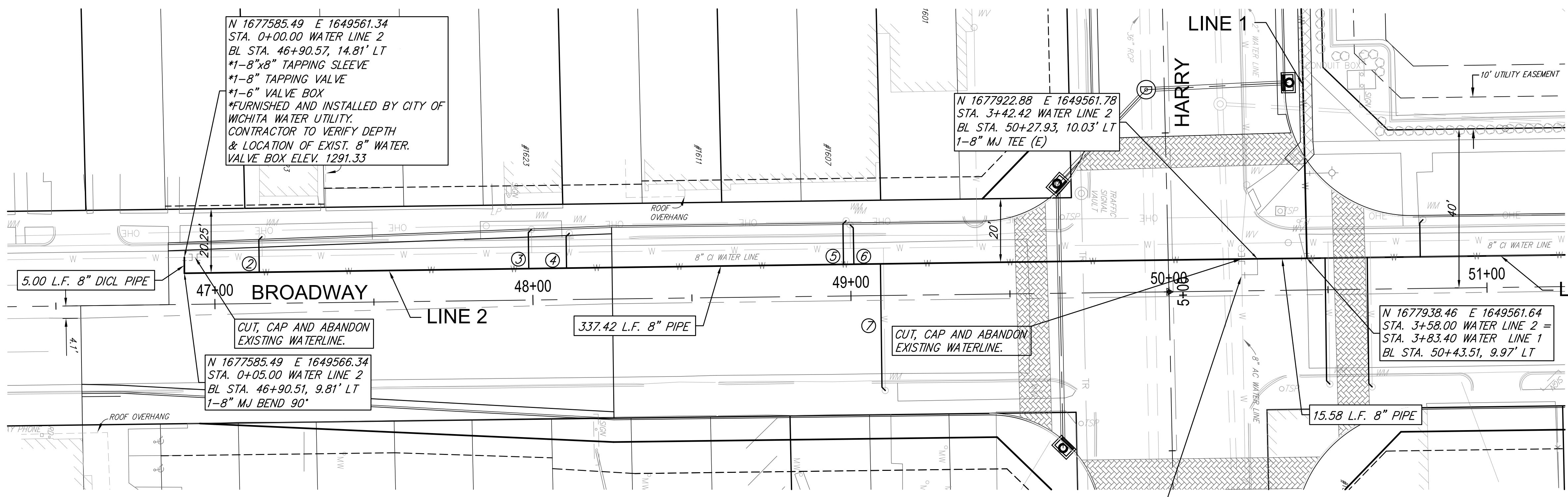


FHWA REGION NO.	STATE	PROJECT NUMBER	FISCAL YEAR	SHEET NUMBER	TOTAL SHEETS
7	KANSAS	87N-0493-01	2012	24	59

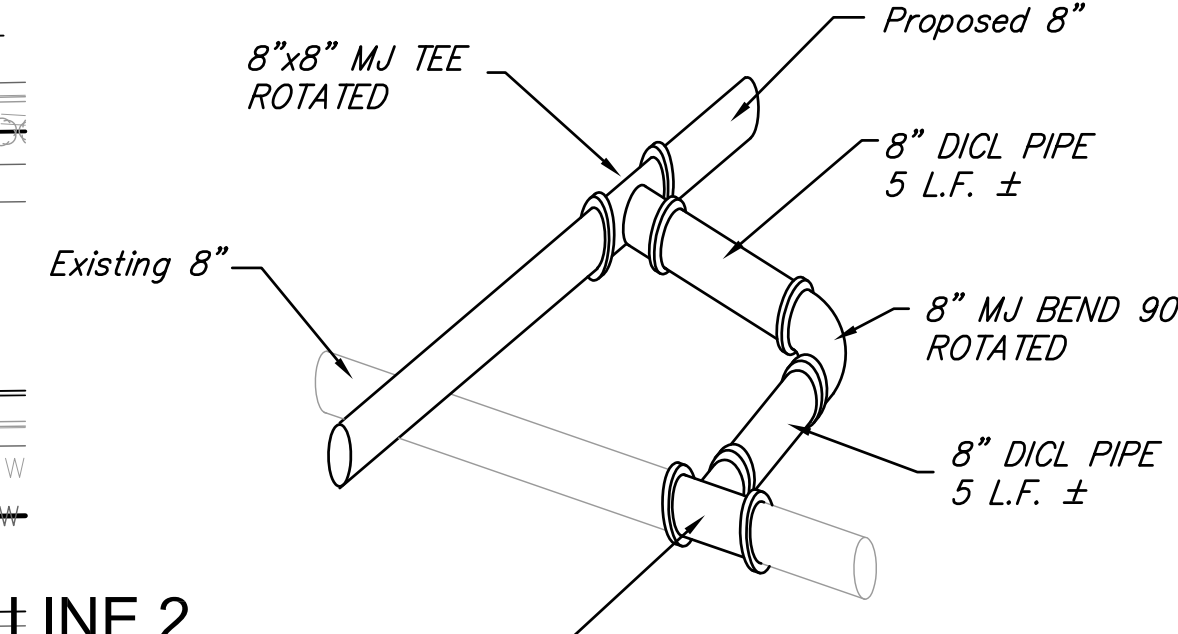
HSPJ Proj. No. N049 (301)



N 1677585.49 E 1649561.34  
 STA. 0+00.00 WATER LINE 2  
 BL STA. 46+90.57, 14.81' LT  
 \*1-8"x8" TAPPING SLEEVE  
 \*1-8" TAPPING VALVE  
 \*1-6" VALVE BOX  
 \*FURNISHED AND INSTALLED BY CITY OF WICHITA WATER UTILITY.  
 CONTRACTOR TO VERIFY DEPTH & LOCATION OF EXIST. 8" WATER.  
 VALVE BOX ELEV. 1291.33

N 1677922.88 E 1649561.78  
 STA. 3+42.42 WATER LINE 2  
 BL STA. 50+27.93, 10.03' LT  
 1-8" MJ TEE (E)

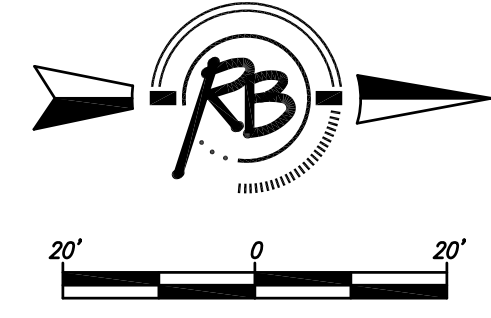
N 1677938.46 E 1649561.64  
 STA. 3+58.00 WATER LINE 2 =  
 STA. 3+83.40 WATER LINE 1  
 BL STA. 50+43.51, 9.97' LT



\*1-8"x8" TAPPING SLEEVE  
 \*1-8" TAPPING VALVE  
 \*1-6" VALVE BOX  
 \*FURNISHED AND INSTALLED BY CITY OF WICHITA WATER UTILITY.  
 VALVE BOX ELEV. = \_\_\_\_\_  
 CONTRACTOR TO VERIFY DEPTH & LOCATION OF EXIST. 8" WATER.

**CROSS CONNECT DETAIL**

NOTES:  
 \* THESE ITEMS TO BE FURNISHED AND INSTALLED BY THE DEPT. OF WATER AND SEWER. THE CONTRACTOR SHALL REIMBURSE THE DEPT. FOR ALL COSTS OF THE TAP.

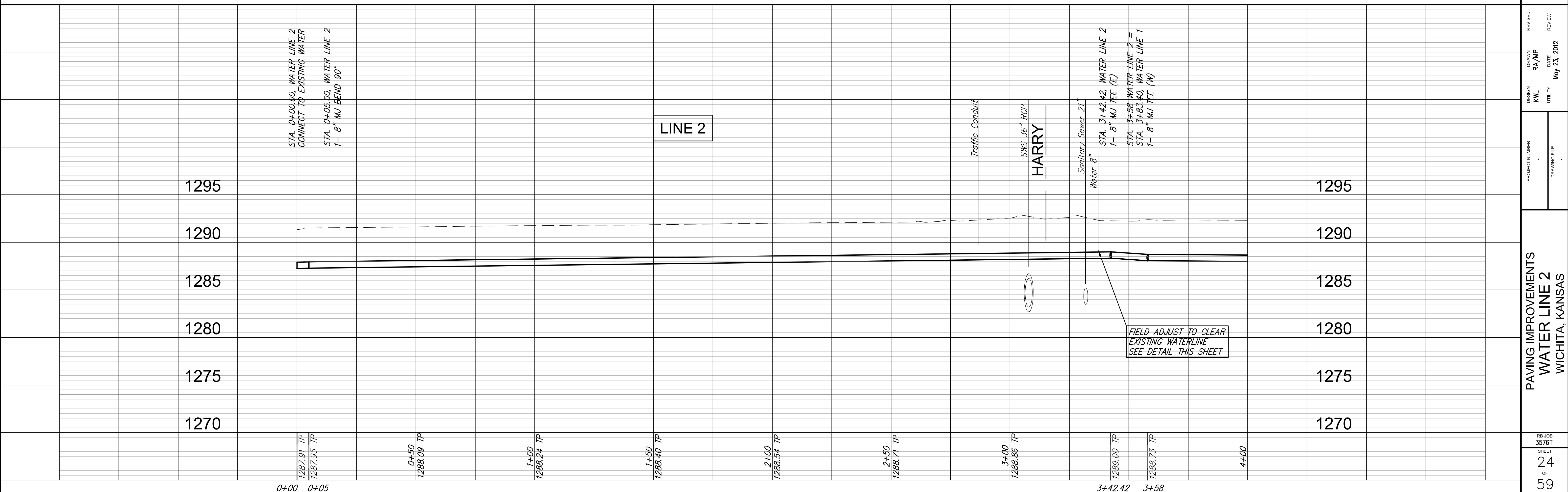


SEE CONNECTION DETAIL, THIS SHEET



**WATER SERVICE TABLE**

SERVICE #	LINE #	STATION	APPROXIMATE LENGTH
②	LINE 2	0+28.55	12 LF
③	LINE 2	1+13.31	13 LF
④	LINE 2	1+25.19	12 LF
⑤	LINE 2	2+12.26	14 LF
⑥	LINE 2	2+15.53	13 LF
⑦	LINE 2	2+23.88	40 LF



STA. 0+00.00, WATER LINE 2  
 CONNECT TO EXISTING WATER

STA. 0+05.00, WATER LINE 2  
 1- 8" MJ BEND 90°

LINE 2

FIELD ADJUST TO CLEAR EXISTING WATERLINE SEE DETAIL THIS SHEET

KUGGES & DOHM, P.A.  
 Engineering, Surveying, Land Planning  
 924 North Main Street  
 Wichita, Kansas 67203  
 (316) 264-4008  
 Fax: (316) 264-4021  
 Email: info@kugges.com

DESIGN: KWL  
 DRAWN: RAYMP  
 DATE: May 23, 2012

PROJECT NUMBER: \_\_\_\_\_  
 DRAWING FILE: \_\_\_\_\_

PAVING IMPROVEMENTS  
 WATER LINE 2  
 WICHITA, KANSAS

RB JOB: 3576T  
 SHEET: 24 OF 59