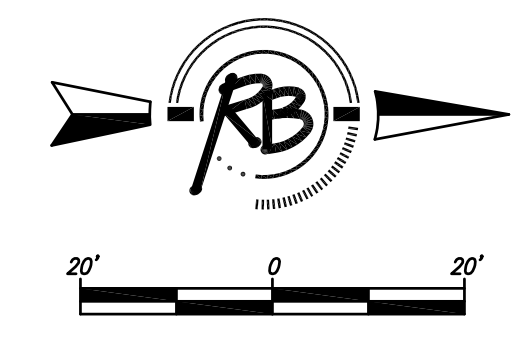
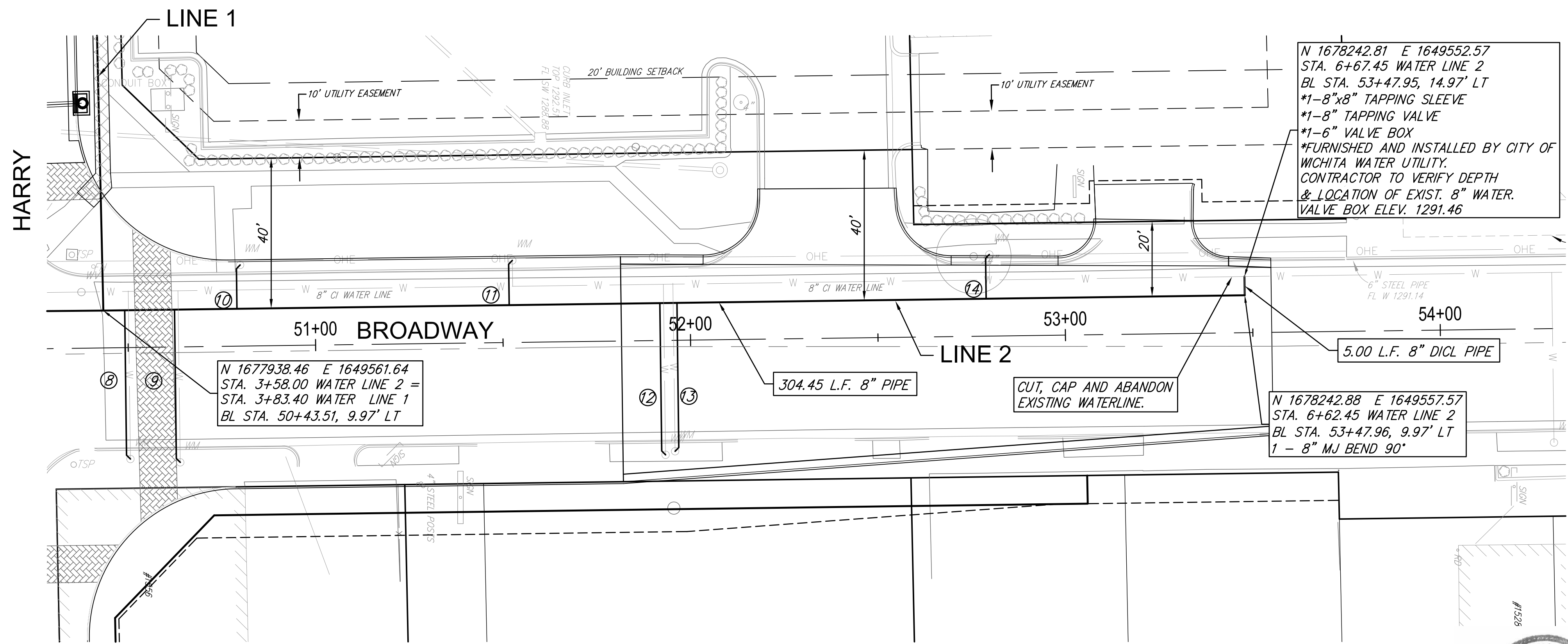


FHWA REGION NO.	STATE	PROJECT NUMBER	FISCAL YEAR	SHEET NUMBER	TOTAL SHEETS
7	KANSAS	87N-0493-01	2012	25	59

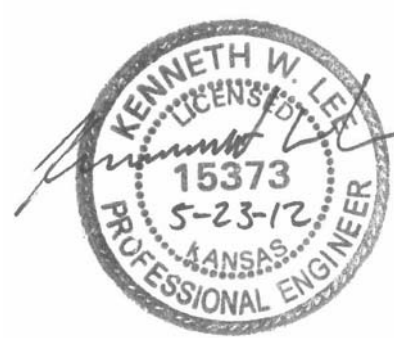
HSIP Proj. No. N049 (301)



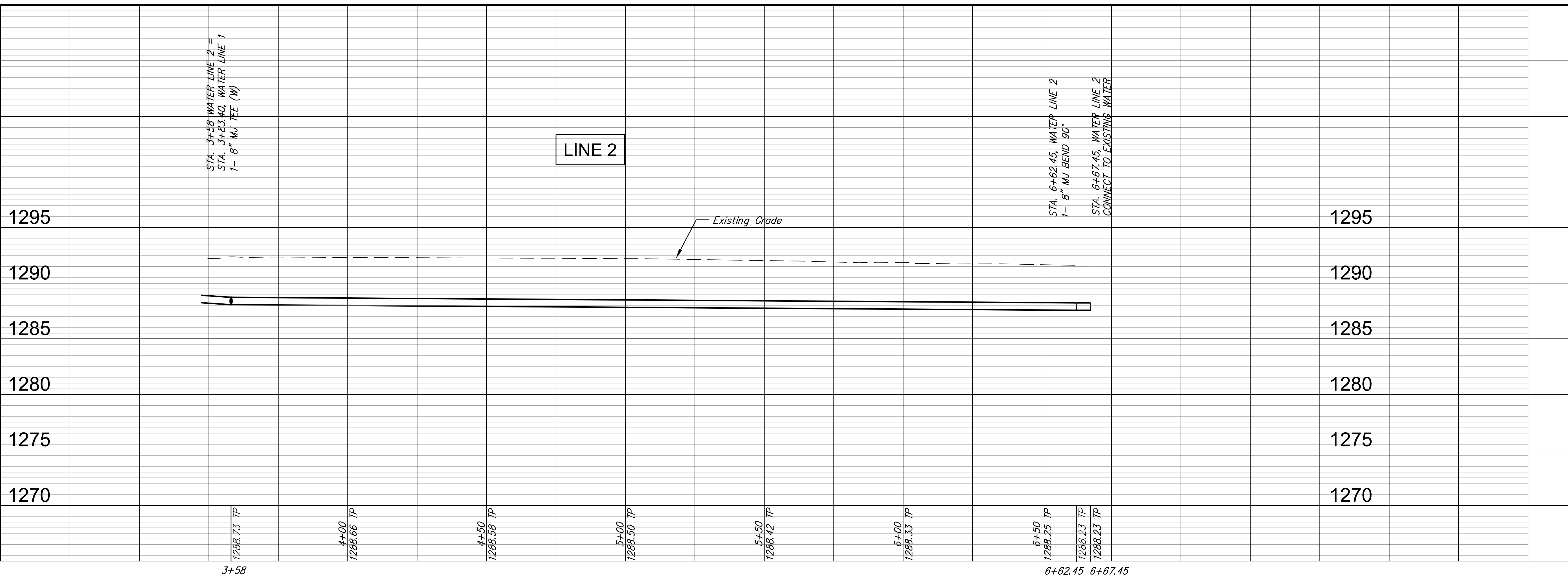
NOTES:  
\* THESE ITEMS TO BE FURNISHED AND INSTALLED BY THE DEPT. OF WATER AND SEWER.

**WATER SERVICE TABLE**

SERVICE #	LINE #	STATION	APPROXIMATE LENGTH
⑧	LINE 2	3+63.70	40 LF
⑨	LINE 2	3+76.86	41 LF
⑩	LINE 2	3+93.75	12 LF
⑪	LINE 2	4+66.13	12 LF
⑫	LINE 2	5+06.56	41 LF
⑬	LINE 2	5+11.13	40 LF
⑭	LINE 2	5+93.58	12 LF



Kuggles & Dohm, P.A.  
 Engineering, Surveying, Land Planning  
 624 North Main  
 Wichita, Kansas 67203  
 www.kdpe.com  
 (316) 264-4008  
 (316) 264-4001 fax  
 Email: kd@kdpe.com



**PAVING IMPROVEMENTS**  
**WATER LINE 2**  
**WICHITA, KANSAS**

REVISION	DATE
REVIEW	May 23, 2012
DESIGN	UTILITY
DRAWN	

PROJECT NUMBER: \_\_\_\_\_  
 DRAWING FILE: \_\_\_\_\_

RB JOB: 3576T  
 SHEET: 25 OF 59