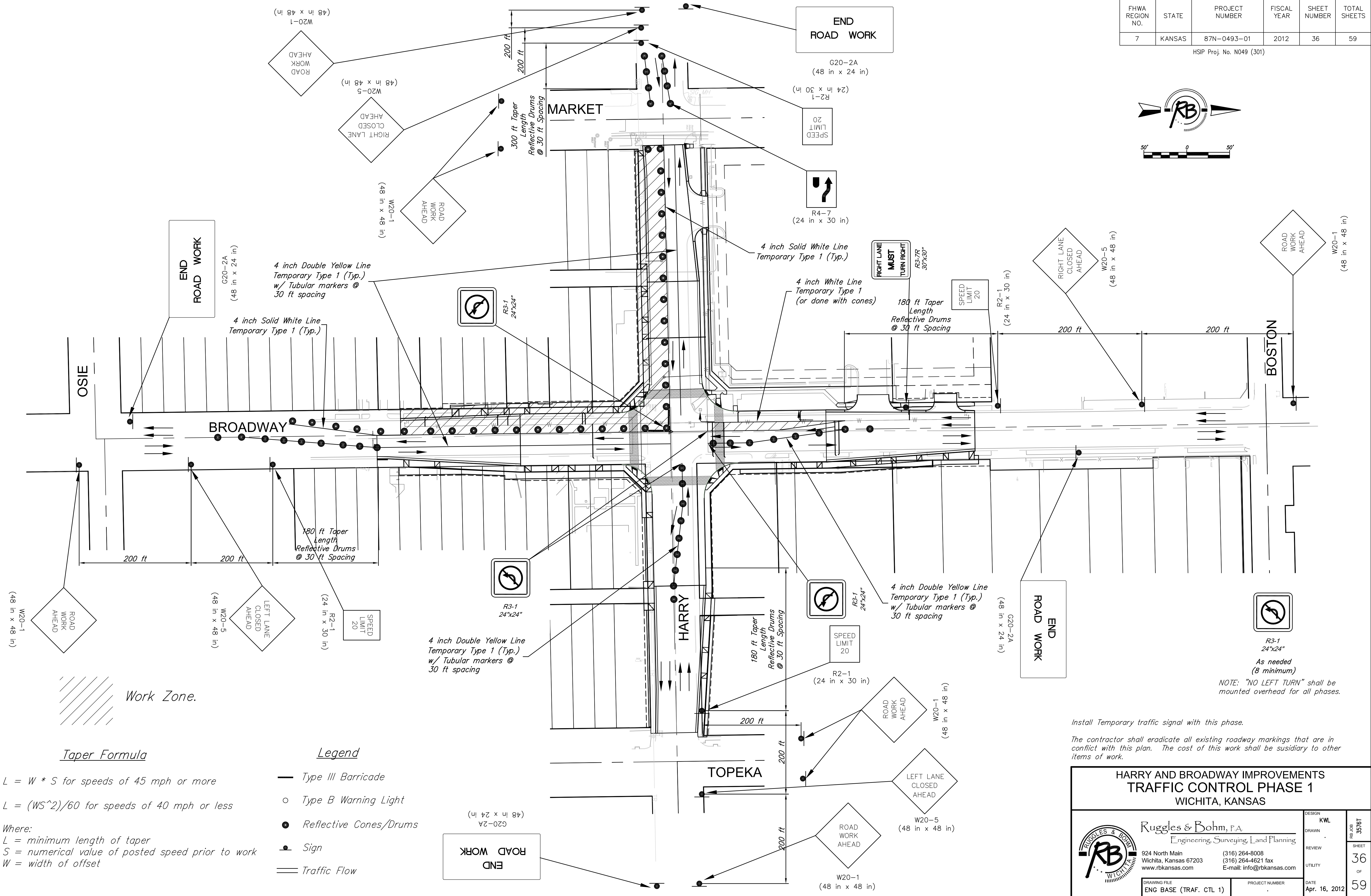
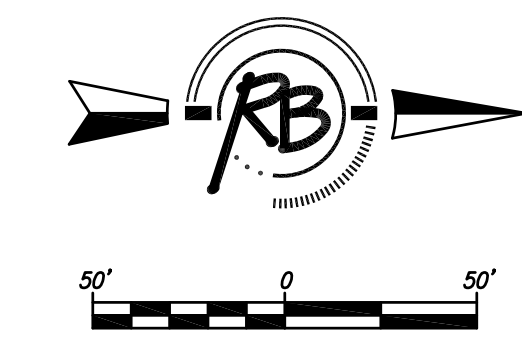


FHWA REGION NO.	STATE	PROJECT NUMBER	FISCAL YEAR	SHEET NUMBER	TOTAL SHEETS
7	KANSAS	87N-0493-01	2012	36	59

HSPJ Proj. No. N049 (301)



Work Zone.

Taper Formula

$L = W * S$ for speeds of 45 mph or more

$L = (WS^2)/60$ for speeds of 40 mph or less

Where:

- L = minimum length of taper
- S = numerical value of posted speed prior to work
- W = width of offset

Legend

- Type III Barricade
- Type B Warning Light
- Reflective Cones/Drums
- Sign
- == Traffic Flow

Install Temporary traffic signal with this phase.

The contractor shall eradicate all existing roadway markings that are in conflict with this plan. The cost of this work shall be subsidiary to other items of work.

NOTE: "NO LEFT TURN" shall be mounted overhead for all phases.

**HARRY AND BROADWAY IMPROVEMENTS
TRAFFIC CONTROL PHASE 1
WICHITA, KANSAS**

<p>Ruggles & Bohm, P.A. Engineering, Surveying, Land Planning</p> <p>924 North Main Wichita, Kansas 67203 www.rbkansas.com</p> <p>(316) 264-8008 (316) 264-4621 fax E-mail: info@rbkansas.com</p>	DESIGN KWL	<p>SHEET 36 OF 59</p>
	DRAWN	
REVIEW	UTILITY	DATE Apr. 16, 2012
DRAWING FILE ENG BASE (TRAF. CTL 1)	PROJECT NUMBER	DATE