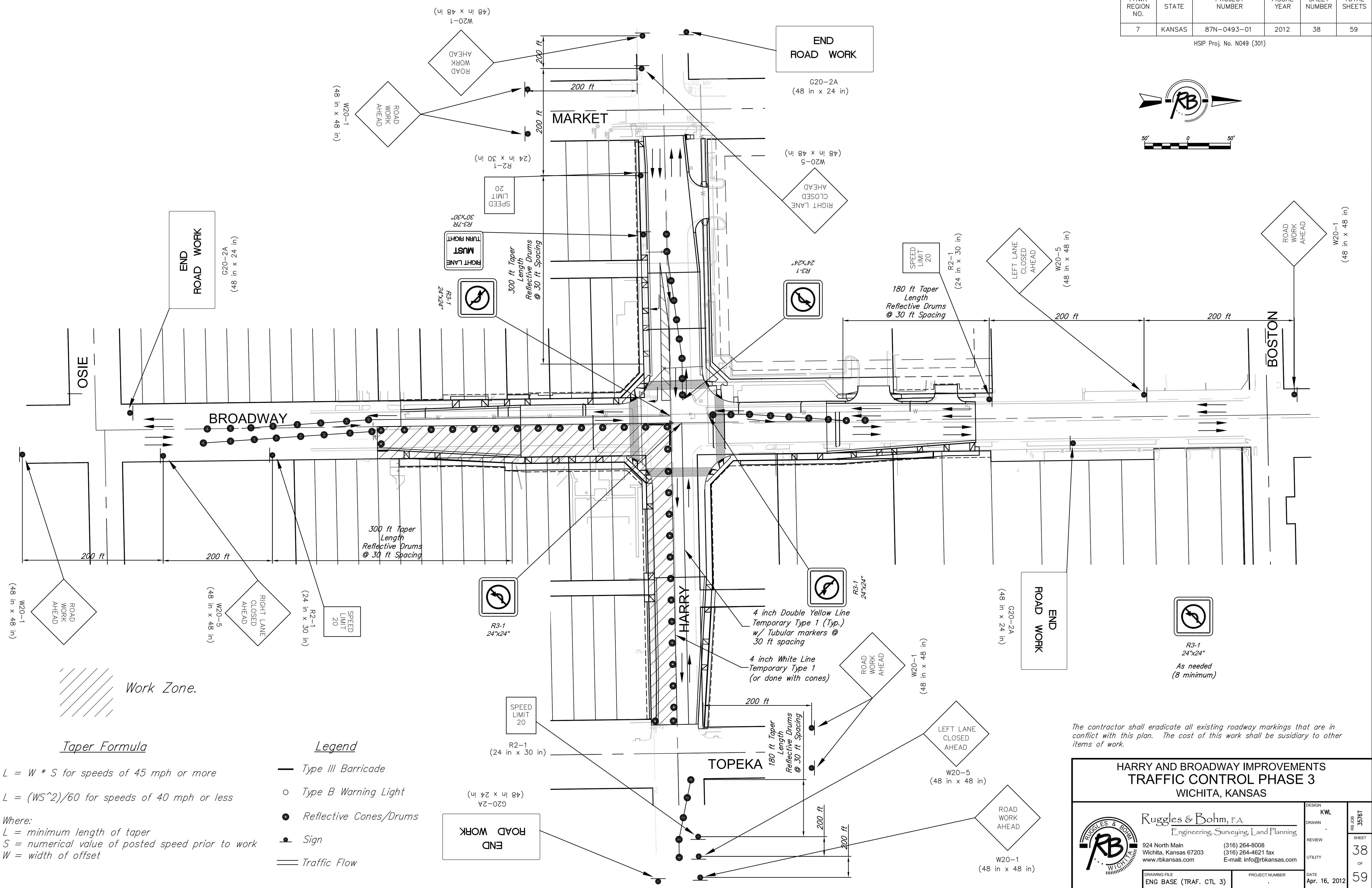
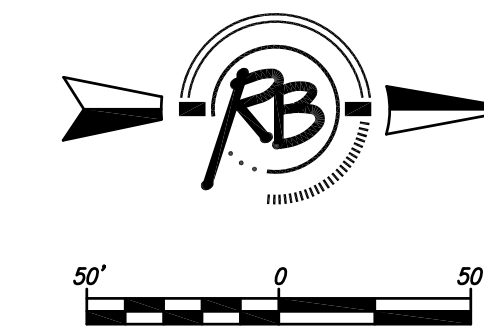


FHWA REGION NO.	STATE	PROJECT NUMBER	FISCAL YEAR	SHEET NUMBER	TOTAL SHEETS
7	KANSAS	87N-0493-01	2012	38	59

HSPJ Proj. No. N049 (301)



Work Zone.

Taper Formula

$L = W * S$ for speeds of 45 mph or more

$L = (WS^2)/60$ for speeds of 40 mph or less

Where:
 L = minimum length of taper
 S = numerical value of posted speed prior to work
 W = width of offset

Legend

- Type III Barricade
- Type B Warning Light
- Reflective Cones/Drums
- Sign
- Traffic Flow

The contractor shall eradicate all existing roadway markings that are in conflict with this plan. The cost of this work shall be subsidiary to other items of work.

HARRY AND BROADWAY IMPROVEMENTS TRAFFIC CONTROL PHASE 3 WICHITA, KANSAS		DESIGN KWL	SHEET 38 OF 59
 Ruggles & Bohm, P.A. Engineering, Surveying, Land Planning 924 North Main Wichita, Kansas 67203 www.rbkansas.com (316) 264-8008 (316) 264-4621 fax E-mail: info@rbkansas.com		DRAWN REVIEW UTILITY	
DRAWING FILE ENG BASE (TRAF. CTL 3)	PROJECT NUMBER	DATE Apr. 16, 2012	