

9TH STREET NORTH

MH 4848-337  
Approx depth = 6.2 feet

MH 4848-336  
Depth not measured

MH 4848-335  
Depth not measured

MH 4848-334  
Approx depth = 9.8 feet

Install 950 lf of 8" Cured-in-Place Liner  
from MH 4848-337 to MH 4848-334

990

9411

974

352'

934

350'

901

HICKORY

BIRCH

MURDOCK

PETERSON

WESTLINK AVE.

(drainage ditch)

WESTLINK AVE.

MURRAY

N

**SITE 8**

SHEET 41 OF 55



W 9TH ST N

W KENNY LN

W HICKORY LN

W HICKORY LN

W BIRCH LN

N PETERSON AVE

N WESTLINK AVE

N WESTLINK AVE

N MURRAY AVE

W MURDOCK AVE

W BIRCH

N



## Television Inspection Master Report

4/24/2009

11:09 AM

US Structure: 4848-337  
DS Structure: 4848-336

990 N WESTLINK AVE  
974 N WESTLINK AVE

Date Insp: 10/13/2008  
Dir Televised: Up->Down

Basin: W06A

### Pipe Information

Project No. : K-063      Dia: 8      Material: VCP      Length: 240.0      Slope: 0.400      DVD #0447

Obs. #	VTR Counter	Distance	Location	Description	Rating	Obsrvd (gpm)	Ratings			Remain (gpm)
							Est. (gpm)	Struct	Clean	
1		0.0	US Manhole	4848-337	1		0.000	0	0	0.000
2		41.5	East	Break-In Conn	3		0.004	2	0	0.004
	9411 W 9TH ST N			4" Break In Connection			<b>Comment:</b> To be replaced "by others"			
3		58.9	West	Wye Service / sealed off	1		0.000	0	0	0.000
4		61.9	East	Wye Service / sealed off	1		0.000	0	0	0.000
5		98.7	West	Break-In Conn	3		0.004	2	0	0.004
	990 N WESTLINK			4" Break In Connection			<b>Comment:</b> To be replaced "by others"			
6		136.3	West	Break-In Conn	4		0.008	60	0	0.008
	982 N WESTLINK / protrudes slightly			4" Break In Connection			<b>Comment:</b> To be replaced "by others"			
7		138.3	Joint	Roots	3		0.008	5	8	0.008
8		140.0	West	Wye Service / Sealed off	1		0.000	0	0	0.000
9		140.3	Joint	Roots	3		0.008	5	8	0.008
10		141.3	East	Wye Service	1		0.000	0	0	0.000
	979 N MURRAY			4" Clay Wye Connection						
11		144.6	Joint	Roots	3		0.008	5	8	0.008
12		147.7	Joint	Roots	2		0.004	2	4	0.004
13		150.6	Joint	Roots	3		0.008	5	8	0.008
14		183.9	Joint	Roots	4		0.010	10	25	0.010
15		186.9	Joint	Roots	2		0.004	2	4	0.004
16		190.0	Joint	Roots	3		0.008	5	8	0.008
17		211.0	Joint	Roots	2		0.004	2	4	0.004
18		212.7	West	Wye Service / sealed off	1		0.000	0	0	0.000
19		213.3	Joint	Roots	3		0.008	5	8	0.008
20		214.8	East	Wye Service / sealed off	1		0.000	0	0	0.000
21		216.2	Joint	Roots	3		0.008	5	8	0.008
22		220.0	West	Break-In Conn	4		0.008	60	0	0.008
	974 N WEST LINK			4" Break In Connection			<b>Comment:</b> NEEDS REPAIR			
23		236.6	East	Break-In Conn	3		0.004	2	0	0.004
	971 N MURRAY			4" Break In Connection			<b>Comment:</b> NEEDS REPAIR			
24		247.4	Invert	Broken Pipe	3		0.010	60	0	0.010
25		248.4	DS Manhole	4848-336			Needs lined for roots / INVERTS NEED REPAIR			



# Television Inspection Master Report

4/24/2009

11:09 AM

US Structure: 4848-336      974 N WESTLINK AVE      Date Insp: 10/13/2008      Basin: W06A  
 DS Structure: 4848-335      934 N WESTLINK AVE      Dir Televised: Up->Down

**Pipe Information**

Shape: Round      Length Status:      Project No. : K-063  
 Dia/Ht: 8      Material: VCP  
 Length: 350.0      Slope: 0.400      DVD #0447

Obs. #	VTR Counter	Distance	Location	Description	Rating	Obsrvd (gpm)	Ratings			Remain (gpm)
							Est. (gpm)	Struct	Clean	
1		0.0	US Manhole	4848-336	1					
<b>Comment:</b> BOTTOM OF MANHOLE NEEDS TO BE REWORKED, FOR CAMERA TO PASS THROUGH EASIER.										
2		5.9	Upper Right	Crack-Radial	3		0.004	5	0	0.004
3		49.8	West	Wye Service / sealed off	1		0.000	0	0	0.000
4		51.9	East	Wye Service / sealed off	1		0.000	0	0	0.000
5		60.2	West	Break-In Conn	3		0.004	2	0	0.004
964 N WEST LINK				4" Break In Connection	<b>Comment:</b>					To be replaced "by others"
6		67.0	East	Break-In Conn	3		0.004	2	0	0.004
965 N MURRAY				4" Break In Connection	<b>Comment:</b>					To be replaced "by others"
7		139.5	West	Wye Service / sealed off	1		0.000	0	0	0.000
8		141.5	East	Wye Service / sealed off	1		0.000	0	0	0.000
9		143.9	East	Break-In Conn	3		0.004	2	0	0.004
957 N MURRAY				4" Break In Connection	<b>Comment:</b>					To be replaced "by others"
10		167.7	West	Break-In Conn	3		0.004	2	0	0.004
958 N WEST LINK				4" Break In Connection	<b>Comment:</b>					To be replaced "by others"
11		196.1	Joint	Offset	3		0.010	20	0	0.010
12		214.3	Joint	Offset	3		0.010	20	0	0.010
13		215.7	West	Break-In Conn	3		0.004	2	0	0.004
950 N WEST LINK				4" Break In Connection	<b>Comment:</b>					To be replaced "by others"
14		219.0	West	Wye Service / sealed off	1		0.000	0	0	0.000
15		220.5	East	Break-In Conn	2		0.002	0	0	0.002
949 N MURRAY / PVC				4" Predco Saddle	<b>Comment:</b>					Roots around the service
16		272.7	Joint	Offset	3		0.010	20	0	0.010
17		291.7	West	Wye Service	1		0.000	0	0	0.000
942 N WEST LINK				4" Clay Wye Connection						
18		294.5		Wye Service / Sealed off	1		0.000	0	0	0.000
19		324.6	East	Break-In Conn	3		0.004	2	0	0.004
941 N MURRAY				4" Break In Connection	<b>Comment:</b>					To be replaced "by others"
20		331.1	Joint	Offset	4		0.030	60	0	0.030
21		352.8	DS Manhole	4848-335	1					

# Television Inspection Master Report

4/24/2009

11:09 AM

US Structure: 4848-335  
DS Structure: 4848-334

934 N WESTLINK AVE  
901 N MURRAY ST

Date Insp: 10/13/2008  
Dir Televised: Upstream to Downstream

Basin: W06A

**Pipe Information**

Shape:	Round	Length Status:		Project No. :	K-063
Dia/Ht:	8	Material:	VCP	Index:	
Length:	350.0	Slope:	0.400	DVD #	0447

Obs. #	VTR Counter	Distance	Location	Description	Rating	Obsrvd (gpm)	Ratings			Remain (gpm)
							Est. (gpm)	Struct	Clean	
1		0.0	US Manhole	4848-335	1		0.000	0	0	0.000
2		8.5	Joint		Roots	3	0.008	5	8	0.008
3		11.6	Joint		Roots	3	0.008	5	8	0.008
4		14.7	Joint		Roots	2	0.004	2	4	0.004
5		16.4	West		Wye Service	1	0.000	0	0	0.000
				934 N WEST LINK	4" Clay Wye Connection					
6		16.6	Joint		Roots	3	0.008	5	8	0.008
7		17.6	East		Wye Service	2	0.000	0	0	0.000
				935 N MURRAY	4" Clay Wye Connection	<b>Comment: ROOTS</b>				
8		18.8	Joint		Roots	2	0.004	2	4	0.004
9		66.7	Joint		Roots	3	0.008	5	8	0.008
10		81.6	Joint		Roots	3	0.008	5	8	0.008
11		90.7	Joint		Roots	3	0.008	5	8	0.008
12		92.4	West		Wye Service / sealed off	1	0.000	0	0	0.000
					4" Clay Wye Connection					
13		94.6	East		Wye Service	1	0.000	0	0	0.000
				927 N MURRAY	4" Clay Wye Connection					
14		118.9	West		Break-In Conn	1	0.001	0	0	0.001
				928 N WEST LINK / PVC	4" Predco Saddle					
15		120.9	Joint		Roots	3	0.008	5	8	0.008
16		138.8	Joint		Roots	3	0.008	5	8	0.008
17		144.9	Joint		Roots	2	0.004	2	4	0.004
18		147.8	Joint		Roots	2	0.004	2	4	0.004
19		150.8	Joint		Roots	3	0.008	5	8	0.008
20		168.0	West		Wye Service / sealed off	1	0.000	0	0	0.000
21		168.3	Joint		Roots	3	0.008	5	8	0.008

## Television Inspection Master Report

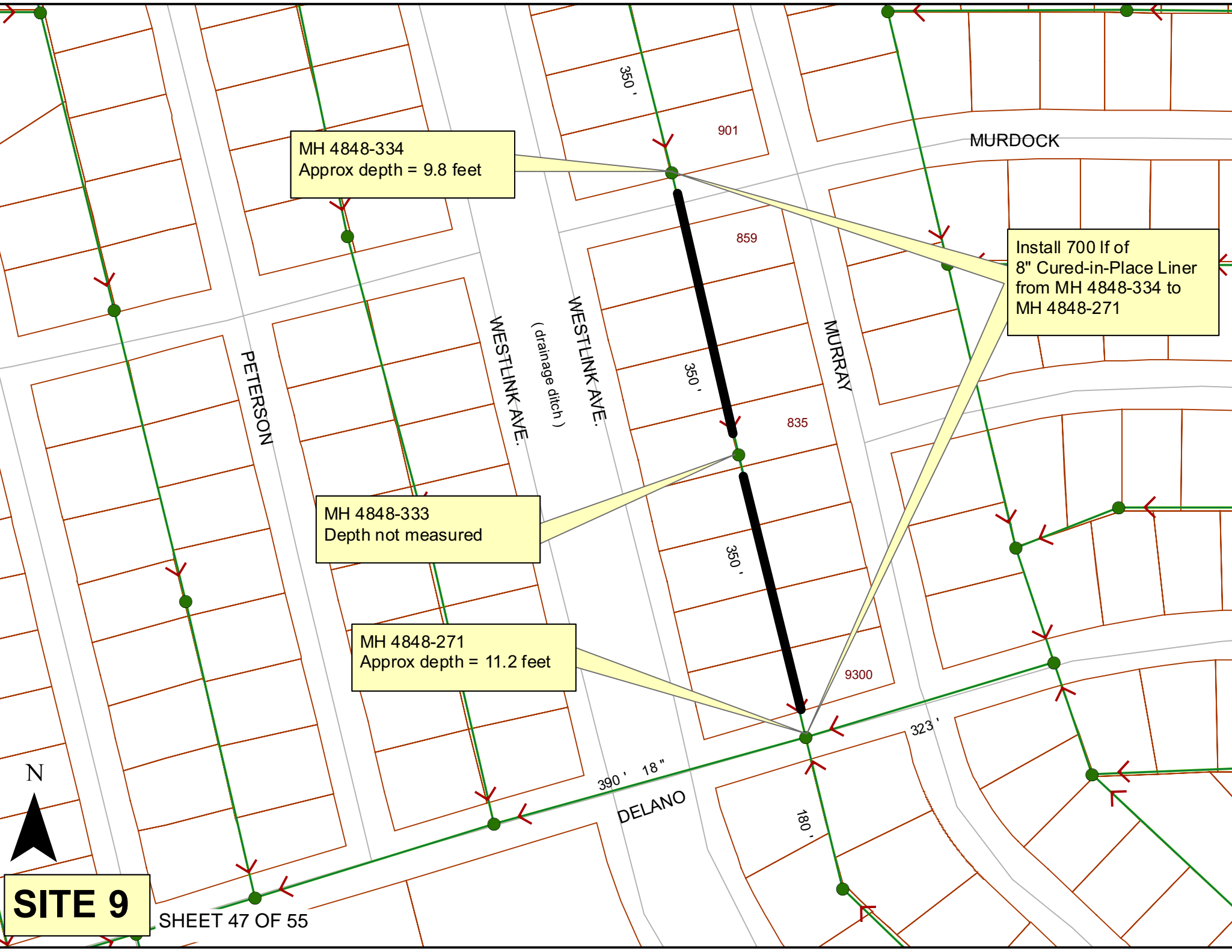
4/24/2009

11:09 AM

US Structure: 4848-335      934 N WESTLINK AVE      Date Insp: 10/13/2008      Basin: W06A  
 DS Structure: 4848-334      901 N MURRAY ST      Dir Televised: Upstream to Downstream

22	169.8	East	Wye Service	2	0.000	0	0	0.000
919 N MURRAY			4" Clay Wye Connection	<b>Comment:</b> ROOTS				
23	174.4	West	Break-In Conn	3	0.004	2	0	0.004
920 N WEST LINK			4" Break In Connection	<b>Comment:</b> To be replaced "by others"				
24	191.6	Joint	Roots	2	0.004	2	4	0.004
25	194.6	Joint	Roots	2	0.004	2	4	0.004
26	218.6	Upper Left	Broken Pipe	3	0.010	60	0	0.010
27	239.0	West	Break-In Conn	3	0.004	2	0	0.004
912 N WEST LINK			4" Break In Connection	<b>Comment:</b> To be replaced "by others"				
28	242.4	West	Wye Service / sealed off	1	0.000	0	0	0.000
29	244.4	East	Wye Service / sealed off	1	0.000	0	0	0.000
30	251.9	East	Break-In Conn	2	0.002	0	0	0.002
911 N MURRAY			4" Predco Saddle					
31	268.9	Joint	Roots	3	0.008	5	8	0.008
32	322.0	West	Wye Service / sealed off	1	0.000	0	0	0.000
33	323.4	East	Wye Service	1	0.000	0	0	0.000
901 N MURRAY			4" Clay Wye Connection					
34	325.2	West	Break-In Conn	3	0.004	2	0	0.004
900 N WEST LINK			4" Break In Connection	<b>Comment:</b> TAP NEEDS REPLACED				
	330.0	<b>Offset Joint &amp; broken pipe in invert / sag begins</b>						
	346.0	<b>Offset Joint / sag ends</b>						
35	350.1	DS Manhole	4848-334 / roots on bench	3				

**Downstream 30 lf of pipe to be replaced "by others"**



MH 4848-334  
Approx depth = 9.8 feet

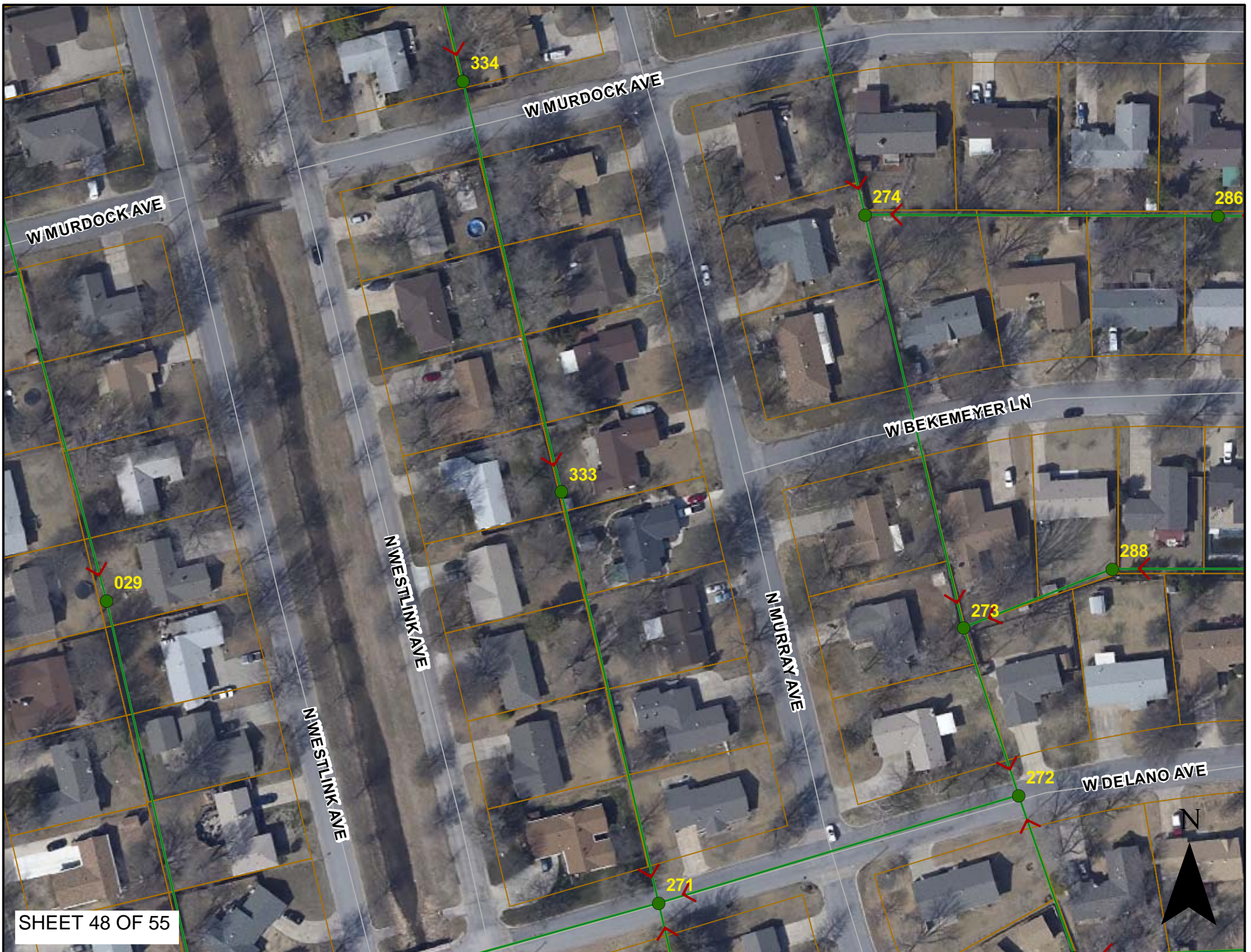
Install 700 lf of  
8" Cured-in-Place Liner  
from MH 4848-334 to  
MH 4848-271

MH 4848-333  
Depth not measured

MH 4848-271  
Approx depth = 11.2 feet

**SITE 9**

SHEET 47 OF 55



W MURDOCK AVE

W MURDOCK AVE

W BEKEMEYER LN

W DELANO AVE

N WESTLINK AVE

N MURRAY AVE







# Television Inspection Master Report

4/24/2009

11:09 AM

US Structure: 4848-334      901 N MURRAY ST      Date Insp: 10/13/2008      Basin: W06A  
 DS Structure: 4848-333      835 N MURRAY ST      Dir Televised: Up->Down

**Pipe Information**

Project No. : K-063      Dia: 8      Material: VCP      Length: 400.0      Slope: 0.400      DVD #0447

Obs. #	VTR Counter	Distance	Location	Description	Rating	Obsrvd (gpm)	Ratings			Remain (gpm)
							Est. (gpm)	Struct	Clean	
1		0.0	US Manhole	4848-334	1		0.000	0	0	0.000
2		38.0	Invert	Crack-Horizontal	2		0.002	2	0	0.002
3		41.5	Lower Right	Crack-Radial	2		0.002	2	0	0.002
4		75.3	Lower Right	Crack-Radial	4		0.008	10	0	0.008
5		102.2	Joint	Roots	2		0.004	2	4	0.004
6		104.6	West	Break-In Conn	3		0.004	2	0	0.004
860 N WEST LINK				4" Break In Connection	<b>Comment:</b> To be replaced "by others"					
7		107.2	West	Wye Service / sealed off	1		0.000	0	0	0.000
8		109.1	East	Wye Service / sealed off	1		0.000	0	0	0.000
9		109.7	East	Break-In Conn	2		0.002	0	0	0.002
859 N MURRAY				4" Break In Connection						
10		113.5	Joint	Roots	2		0.004	2	4	0.004
11		181.7	West	Wye Service / sealed off	1		0.000	0	0	0.000
12		183.9	East	Wye Service	2		0.000	0	0	0.000
853 N MURRAY / roots				4" Clay Wye Connection	<b>Comment:</b> To be replaced "by others"					
13		194.9	West	Break-In Conn	3		0.004	2	0	0.004
852 N WEST LINK				4" Break In Connection	<b>Comment:</b> To be replaced "by others"					
14		256.2	Upper Left	Broken Pipe	4		0.030	78	0	0.030
15		256.8	East	Wye Service	3		0.000	2	0	0.000
843 N MURRAY / pipe cracked all around tap				4" Clay Wye Connection	<b>Comment:</b> To be replaced "by others"					
16		259.5	East	Wye Service / sealed off	1		0.000	0	0	0.000
17		289.3	West	Break-In Conn	2		0.002	0	0	0.002
844 N WEST LINK / roots				4" Break In Connection	<b>Comment:</b> ROOTS					
18		330.5	West	Break-In Conn	1		0.001	0	0	0.001
836 N WEST LINK / PVC				4" Predco Saddle						
19		333.2	East	Wye Service / sealed off	1		0.000	0	0	0.000
20		351.1	DS Manhole	4848-333						



# Television Inspection Master Report

4/24/2009

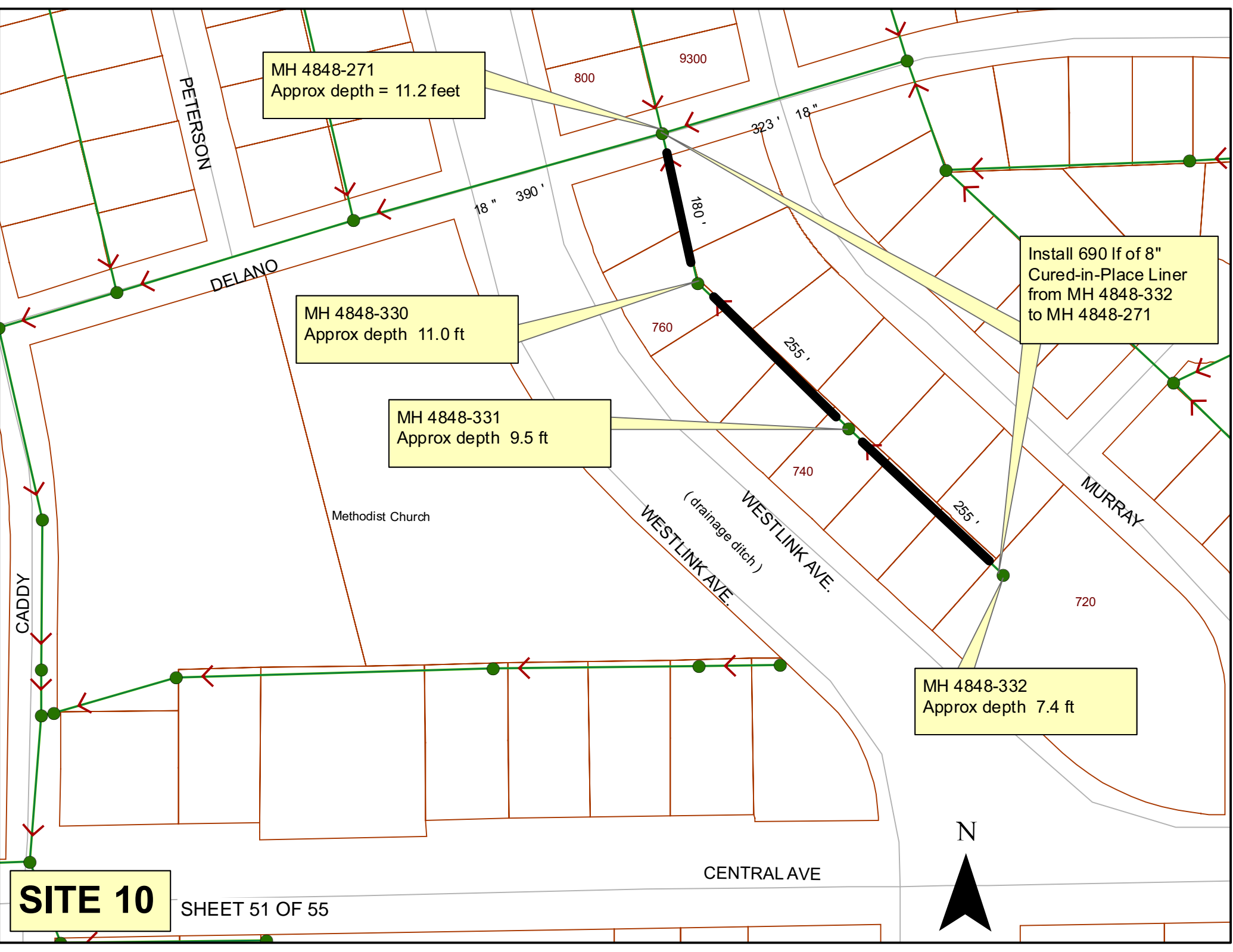
11:09 AM

US Structure: 4848-333      835 N MURRAY ST      Date Insp: 10/13/2008      Basin: W06A  
 DS Structure: 4848-271      9300 W DELANO AVE      Dir Televised: Up to Down

## Pipe Information

Project No. : K-063      Dia: 8      Material: VCP      Length: 350.0      Slope: 0.400      DVD #0447

Obs. #	VTR Counter	Distance	Location	Description	Rating	Obsrvd (gpm)	Ratings			Remain (gpm)
							Est. (gpm)	Struct	Clean	
1		0.0	US Manhole	4848-333	1		0.000	0	0	0.000
2		14.8	East	Break-In Conn	3		0.004	2	0	0.004
	835 N MURRAY			4" Break In Connection	<b>Comment:</b>		NEEDS REPAIR			
3		30.9	Joint	Offset	3		0.010	20	0	0.010
4		36.0	West	Break-In Conn	3		0.004	2	0	0.004
	828 N WEST LINK			4" Break In Connection	<b>Comment:</b>		NEEDS REPAIR			
5		56.8	West	Wye Service / sealed off	1		0.000	0	0	0.000
6		58.9	East	Wye Service / sealed off	1		0.000	0	0	0.000
7		60.6	East	Break-In Conn	2		0.002	0	0	0.002
	827 N MURRY			4" Break In Connection	<b>Comment:</b>		To be replaced "by others"			
8		133.0	West	Wye Service / sealed off	1		0.000	0	0	0.000
9		135.0	East	Wye Service / sealed off	1		0.000	0	0	0.000
10		147.0	West	Break-In Conn	3		0.004	2	0	0.004
	820 N WEST LINK / heavy roots			4" Break In Connection	<b>Comment:</b>		To be replaced "by others"			
11		164.3	East	Break-In Conn	3		0.004	2	0	0.004
	819 N MURRAY (tap sits low on pipe)			4" Break In Connection	<b>Comment:</b>		To be replaced "by others"			
12		174.7	Joint / roots heavy across the pipe	Roots	3		0.008	5	8	0.008
13		183.7	Joint	Roots			0.000	0	0	0.000
14		186.2	West	Break-In Conn	3		0.004	2	0	0.004
	814 N WEST LINK			4" Break In Connection	<b>Comment:</b>		To be replaced "by others"			
15		198.7	Joint	Roots	3		0.008	5	8	0.008
16		218.5	West	Wye Service / sealed off	1		0.000	0	0	0.000
17		219.5	East	Wye Service	2		0.000	0	0	0.000
	811 N MURRY			4" Clay Wye Connection	<b>Comment:</b>		PACKED WITH ROOTS			
18		236.1	Lower Right	Crack-Radial	4		0.008	10	0	0.008
19		257.6	Lower Right	Crack-Radial	3		0.004	5	0	0.004
20		275.8	East	Break-In Conn	3		0.004	2	0	0.004
	9300 W DELANO / INFILTRATION			4" Break In Connection	<b>Comment:</b>		To be replaced "by others"			
21		281.1	Lower Right	Crack-Radial	3		0.004	5	0	0.004
22		294.8		Wye Service	1		0.000	0	0	0.000
	800 N WEST LINK			4" Clay Wye Connection						
23		297.0	West	Wye Service / sealed off	1		0.000	0	0	0.000
24		350.0	DS Manhole	4848-271						



MH 4848-271  
Approx depth = 11.2 feet

MH 4848-330  
Approx depth 11.0 ft

MH 4848-331  
Approx depth 9.5 ft

MH 4848-332  
Approx depth 7.4 ft

Install 690 lf of 8"  
Cured-in-Place Liner  
from MH 4848-332  
to MH 4848-271

**SITE 10**

SHEET 51 OF 55



Methodist Church

PETERSON

DELANO

CADDY

WESTLINK AVE.  
(drainage ditch)

WESTLINK AVE.

MURRAY

CENTRAL AVE

800

9300

323'

18"

18"

390'

180'

760

255'

740

255'

720



W DELANO AVE

N WESTLINK AVE

N WESTLINK AVE

N MURRAY ST

N MURRAY AVE

N



# Television Inspection Master Report

4/24/2009

11:09 AM

US Structure: 4848-332      720 N WESTLINK AVE      Date Insp: 10/14/2008      Basin: W06A  
 DS Structure: 4848-331      740 N WESTLINK AVE      Dir Televised: Up->Down

**Pipe Information**

Project No. : K-063      Dia: 8      Material: VCP      Length: 260.0      Slope: 0.400      DVD #0447

Obs. #	VTR Counter	Distance	Location	Description	Rating	Obsrvd (gpm)	Ratings		Remain (gpm)
							Est. (gpm)	Struct Clean	
1		0.0	US Manhole	4848-332	1	0.000	0	0	0.000
2		13.8	Joint		Roots 3	0.008	5	8	0.008
3		19.9	Joint		Offset 3	0.010	20	0	0.010
4		19.9	Joint		Roots 2	0.004	2	4	0.004
5		32.1	Joint		Offset 2	0.000	0	0	0.000
6		40.0	West	Wye Service / sealed off	1	0.000	0	0	0.000
7		40.0	East	Break-In Conn	4	0.008	60	0	0.008
				739 N MURRAY / protrudes slightly	4" Break In Connection	<b>Comment:</b> To be replaced "by others"			
8		43.1	East	Wye Service / sealed off	1	0.000	0	0	0.000
9		50.5	Joint		Roots 3	0.008	5	8	0.008
10		51.1	West	Break-In Conn	4	0.008	60	0	0.008
				726 N WEST LINK	4" Break In Connection	<b>Comment:</b> To be replaced "by others"			
11		109.6	West	Wye Service / sealed off	1	0.000	0	0	0.000
12		112.6	East	Wye Service / sealed off	1	0.000	0	0	0.000
13		118.1	West	Break-In Conn	3	0.004	2	0	0.004
				732 N WEST LINK	4" Break In Connection	<b>Comment:</b> To be replaced "by others"			
14		134.9	Joint		Offset 2	0.000	0	0	0.000
15		163.1	East	Break-In Conn	4	0.008	60	0	0.008
				745 N MURRAY / protruding 1" more or less	4" Break In Connection	<b>Comment:</b> To be replaced "by others"			
16		177.3	Joint		Roots 3	0.008	5	8	0.008
17		182.2	West	Wye Service / sealed off	1	0.000	0	0	0.000
18		185.1	East	Wye Service / sealed off	1	0.000	0	0	0.000
19		186.6	Joint		Roots 3	0.008	5	8	0.008
20		189.7	Joint		Roots 2	0.004	2	4	0.004
21		192.6	Joint		Roots 2	0.004	2	4	0.004
22		204.7	Joint		Roots 3	0.008	5	8	0.008
23		211.0	Joint		Roots 2	0.004	2	4	0.004
24		218.7	West	Break-In Conn	4	0.008	60	0	0.008
				740 N WEST LINK	4" Break In Connection	<b>Comment:</b> To be replaced "by others"			
25		226.5	Joint		Roots 3	0.008	5	8	0.008
26		251.5	DS Manhole	4848-331	3	MANHOLE LID LEAKING WATER			



# Television Inspection Master Report

4/24/2009

11:09 AM

US Structure: 4848-331      740 N WESTLINK AVE      Date Insp: 10/14/2008      Basin: W06A  
 DS Structure: 4848-330      760 N WESTLINK AVE      Dir Televised: Up->Down

**Pipe Information**

Shape: Round      Length Status:      Project No. : K-063  
 Dia/Ht: 8      Material: VCP      Index:  
 Length: 255.0      Slope: 0.400      DVD #0447

Obs. #	VTR Counter	Distance	Location	Description	Rating	Obsrvd (gpm)	Ratings			Remain (gpm)
							Est. (gpm)	Struct	Clean	
1		0.0	US Manhole	4848-331	1	0.000	0	0	0.000	
2		3.9	West	Wye Service / sealed off	1	0.000	0	0	0.000	
3		6.7	East	Wye Service / sealed off	1	0.000	0	0	0.000	
4		21.4	East	Break-In Conn	4	0.008	60	0	0.008	
			751 N MURRAY / protruding 1" or more	4" Break In Connection	<b>Comment:</b> To be replaced "by others"					
5		66.9	West	Break-In Conn	4	0.008	60	0	0.008	
			740 N WEST LINK	4" Break In Connection	<b>Comment:</b> To be replaced "by others"					
6		73.2	West	Wye Service / sealed off	1	0.000	0	0	0.000	
7		76.1	East	Wye Service / sealed off	1	0.000	0	0	0.000	
8		86.0	East	Break-In Conn	4	0.008	60	0	0.008	
			755 N MURRAY	4" Break In Connection	<b>Comment:</b> To be replaced "by others"					
9		144.8	West	Wye Service	3	0.000	2	0	0.000	
			746 N WEST LINK / full of roots	4" Clay Wye Connection	<b>Comment:</b> To be replaced "by others"					
10		148.7	East	Wye Service / sealed off	1	0.000	0	0	0.000	
11		189.3	Joint	Roots	3	0.008	5	8	0.008	
12		196.2	East	Break-In Conn	3	0.004	2	0	0.004	
			761 N MURRAY	4" Break In Connection	<b>Comment:</b> To be replaced "by others"					
13		212.2	West	Wye Service / sealed off	1	0.000	0	0	0.000	
14		224.6	West	Break-In Conn	3	0.004	2	0	0.004	
			752 N WEST LINK	4" Break In Connection	<b>Comment:</b> To be replaced "by others"					
15		249.6	DS Manhole	4848-330	1					

## Television Inspection Master Report

4/24/2009

11:09 AM

US Structure: 4848-330  
DS Structure: 4848-271

760 N WESTLINK AVE  
9300 W DELANO AVE

Date Insp: 10/14/2008  
Dir Televised: Down to Up

Basin: W06A

### Pipe Information

Shape:	Round	Length Status:		Project No. :	K-063
Dia/Ht:	8	Material:	VCP	Index:	
Length:	175.0	Slope:	0.400	DVD #0447	

Comments: DID NOT FIND CONNECTION FOR 760 N WEST LINK.

Obs. #	VTR Counter	Distance	Location	Description	Rating	Obsrvd (gpm)	Ratings			Remain (gpm)
							Est. (gpm)	Struct	Clean	
1		0.0	DS Manhole	4848-271 / tv against the flow	1					
2		19.2	Joint	Offset	3	0.010	20	0	0.010	
3		40.7	East	Wye Service / sealed off	1	0.000	0	0	0.000	
4		43.7	West	Wye Service / sealed off	1	0.000	0	0	0.000	
5		46.4	Joint	Roots	3	0.008	5	8	0.008	
6		77.2	Joint	Offset	3	0.010	20	0	0.010	
7		97.9	Joint	Roots	4	0.010	10	25	0.010	
8		99.3	East	Break-In Conn	4	0.008	60	0	0.008	
			767 N MURRAY / full of roots	4" Break In Connection	<b>Comment:</b>	To be replaced "by others"				
9		101.2	Joint	Roots	3	0.008	5	8	0.008	
10		107.1	West	Break-In Conn	4	0.008	60	0	0.008	
			768 N WEST LINK	4" Break In Connection	<b>Comment:</b>	To be replaced "by others"				
11		107.7	Joint	Roots	3	0.008	5	8	0.008	
12		110.2	Joint	Roots	3	0.008	5	8	0.008	
13		122.4	Joint	Offset	3	0.010	20	0	0.010	
14		128.2	Joint	Roots	3	0.008	5	8	0.008	
15		131.4	Joint	Offset	3	0.010	20	0	0.010	
16		143.6	Joint	Offset	3	0.010	20	0	0.010	
17		150.0	East	Wye Service / sealed off	1	0.000	0	0	0.000	
18		153.2	West	Wye Service / sealed off	1	0.000	0	0	0.000	
19		162.2	Joint	Offset	3	0.010	20	0	0.010	
20		168.1	Joint	Offset	3	0.010	20	0	0.010	
21		180.8	US Manhole	4848-330	1	0.000	0	0	0.000	