



ALL DIMENSIONS AND NOTED MATERIALS  
SHOWN HEREON ARE THE PROPERTY OF  
MOLSSON ASSOCIATES. NO PART OF THIS  
DRAWING IS TO BE REPRODUCED, COPIED, REPRODUCED OR  
DISSEMINATED IN ANY MANNER WITHOUT THE WRITTEN  
AUTHORIZATION FROM THE ARCHITECT.

OA PROJECT # D11-2061



Issue Date: 1-23-12

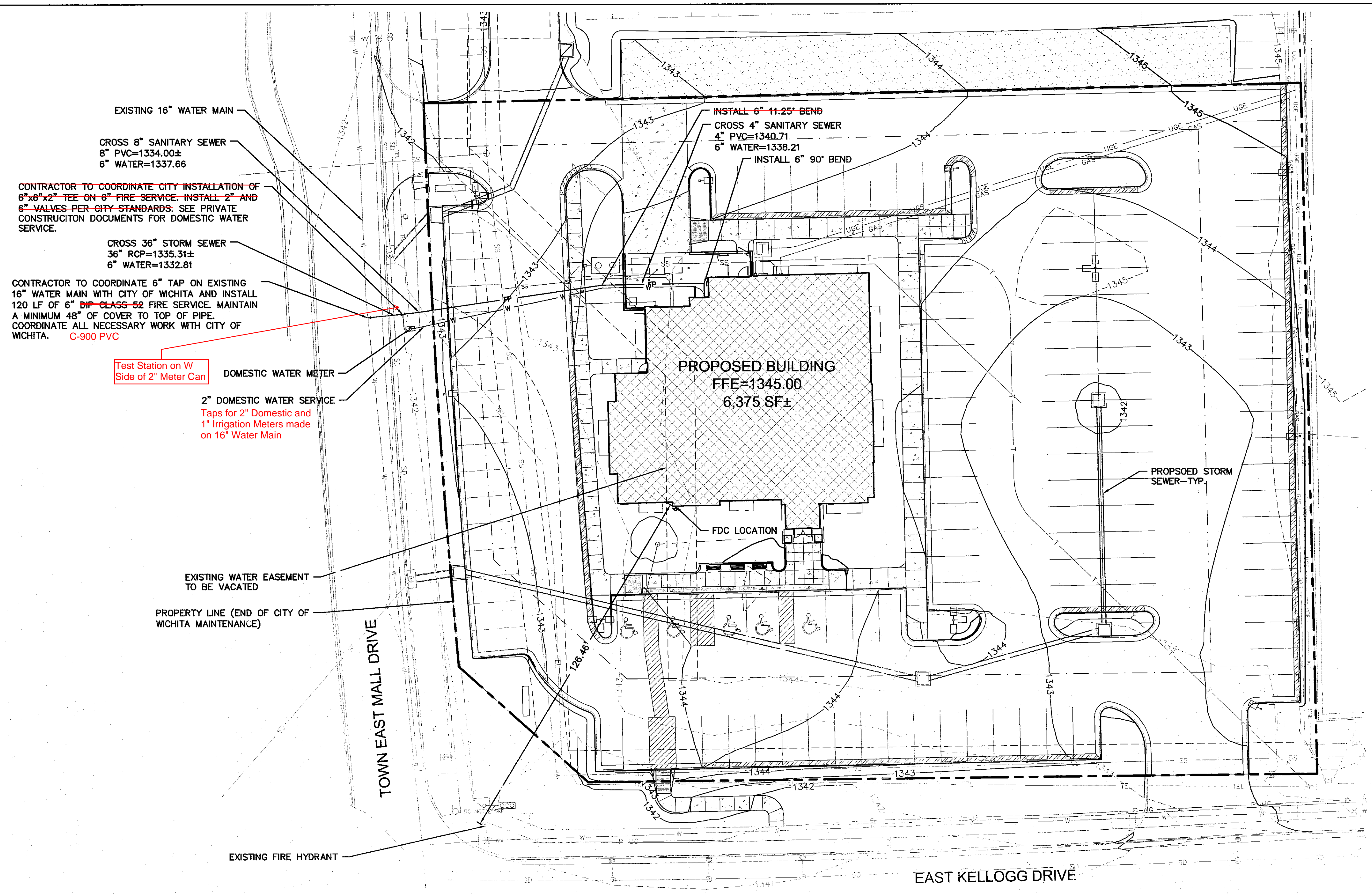
REVISION INFORMATION

Restaurant #: 12L0029

**LONGHORN LH-7.5R**  
Prototype current thru - 10-19-2011  
**TOWNE EAST MALL DRIVE & KELLOGG DRIVE**

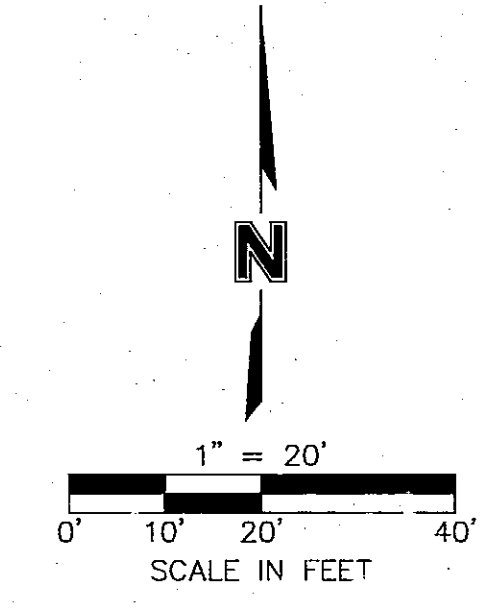
FA11-138  
EAST WICHITA, KS

**FIRE SERVICE PLAN AND PROFILE**

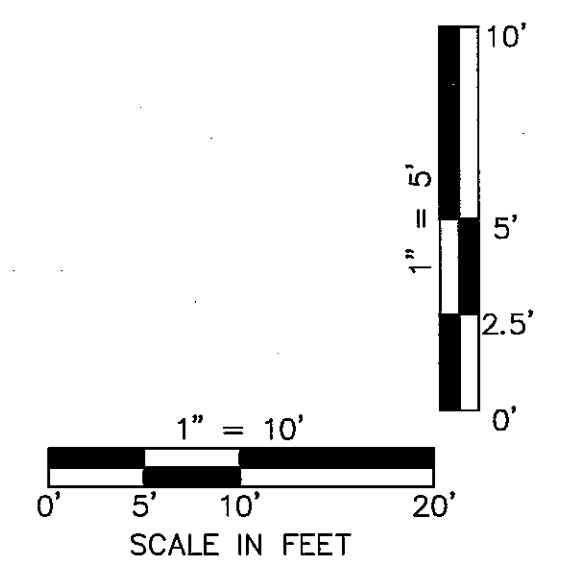
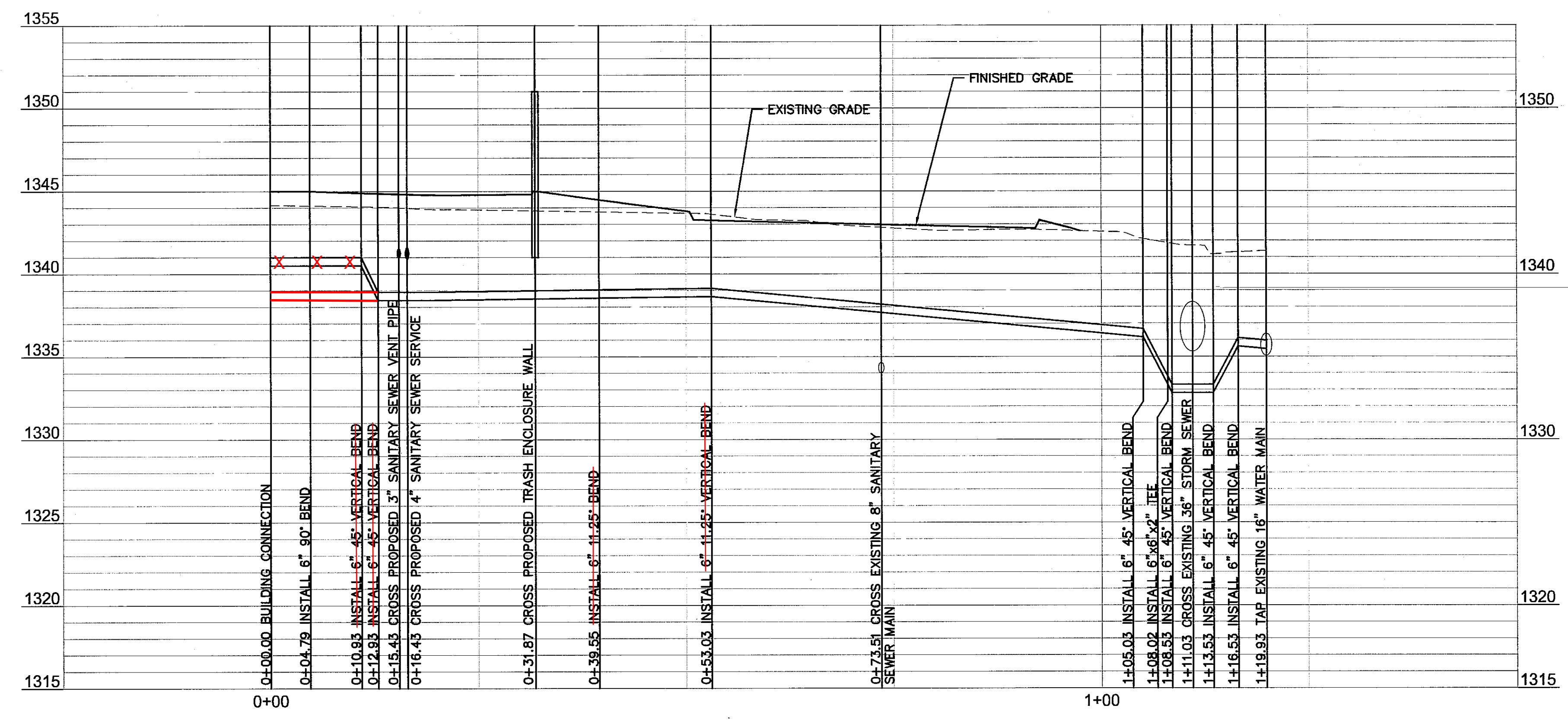


**NOTES**

1. THE CONTRACTOR SHALL BE RESPONSIBLE FOR PAYING ALL TAP AND CONNECTION FEES AND SHALL CONTRACT AND PAY FOR ANY SUB CONTRACTORS BY UTILITY COMPANIES.
2. THE CONTRACTOR IS TO PAY THE CITY OF WICHITA ALL METER SET FEES BEFORE WATER METER IS INSTALLED. AFTER FEES FOR WATER METER ARE PAID (\$3,060), THE CITY OF WICHITA HAS TWENTY-ONE (21) CALENDAR DAYS (EXCLUDING HOLIDAYS) TO INSTALL METER.
3. WATER METER CANNOT BE INSTALLED IN THE BUILDING.
4. THE CONTRACTOR DOES NOT INSTALL THE METER PIT. THE CITY OF WICHITA WILL INSTALL THE METER BOX WITH THE METER.
5. CONTRACTOR TO COORDINATE FIRE AND WATER SERVICE INSTALLATION WITH TRASH ENCLOSURE WALL CONSTRUCTION.
6. NOTIFY ENGINEER OF ANY CONFLICTS FOR SERVICE INSTALLATION.
7. CITY SHALL OPEN ROAD FOR FIRE/WATER SERVICE TAP CONNECTION AND REPLACE ALL DISTURBED RIGHT-OF-WAY UPON COMPLETION OF CONNECTION TO EXISTING CONDUITS. CITY SHALL REPLACE ALL PAVEMENT AND CURBS IN RIGHT OF WAY AT THEIR EXPENSE. CONTRACTOR TO COORDINATE WATER/FIRE SERVICE TAP AND NECESSARY CONSTRUCTION WITH CITY OF WICHITA ENGINEERING AND PUBLIC UTILITIES DEPARTMENTS.



**FIRE PROTECTION LINE**



Owen F. Slagle III  
Architect

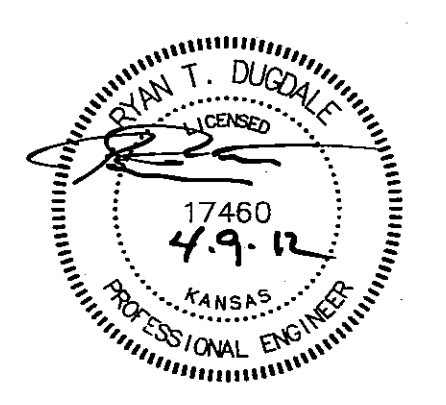
750 3rd St., Suite 3  
Oakmont, PA 15139  
Ph: (412) 828-5710  
Fax: (412) 828-5715

© ALL DIMENSIONS AND MATERIALS SHALL BE TO THE CENTER UNLESS OTHERWISE SPECIFIED. THE CONTRACTOR SHALL BE RESPONSIBLE FOR OBTAINING ALL NECESSARY PERMITS AND APPROVALS FROM THE APPROPRIATE AGENCIES PRIOR TO THE START OF CONSTRUCTION.

**MOLSSON ASSOCIATES**

7301 West 133rd Street, Suite 200  
Overland Park, KS 66131-1720  
TEL 913.381.1170  
FAX 913.381.1174  
www.molsson.com

OA PROJECT # 011-0630



**LONGHORN**  
S T E A K H O U S E

Issue Date: 8-23-11

REVISION INFORMATION

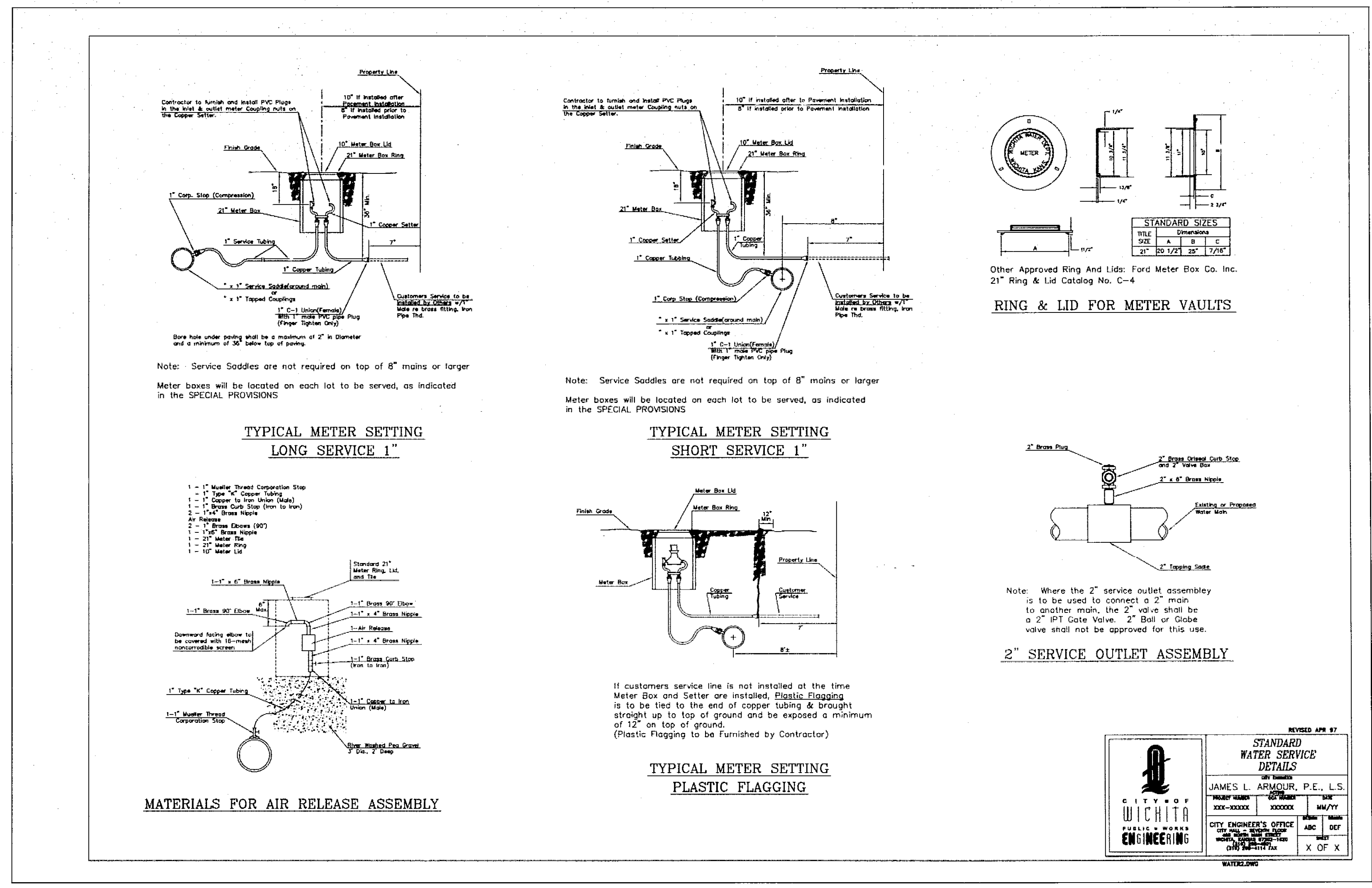
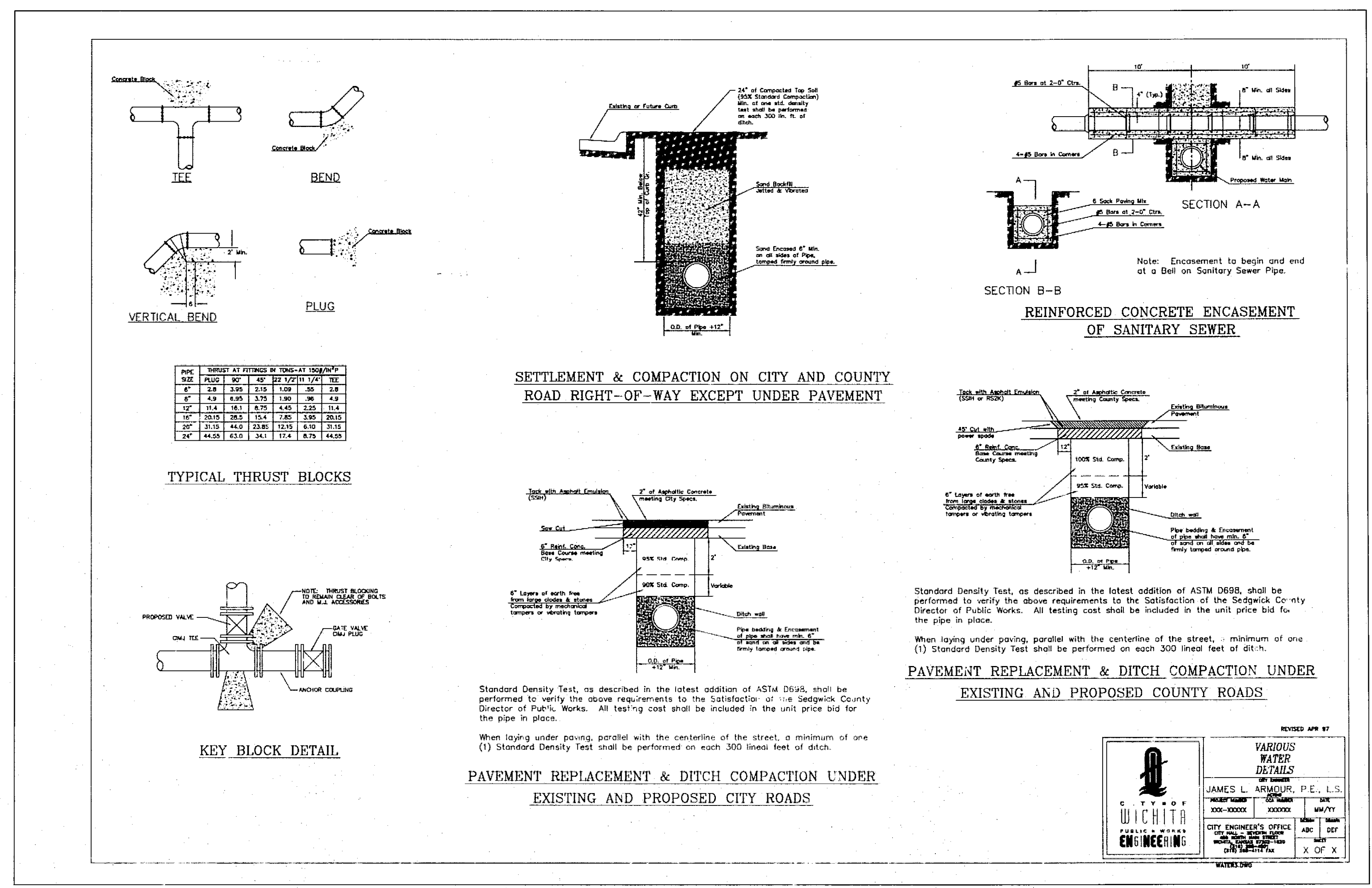
Restaurant #: 1110047

**LONGHORN LH-7.5R**  
Prototype current thru - 2-25-2011  
**CENTRAL PARK PLAZA**  
NWQ W. 21st ST.

FA11-110

WICHITA, KS 67205

DETAILS



**NOTES**  
1. USE ONLY DETAILS NECESSARY AND AS APPLICABLE.

DWG: F:\PROJECTS\011-2061\_LDVP\_Design\Fire Protection Plans\12061\_DL.dwg USER: kgilbrandon  
 DATE: Apr 04, 2012 10:35am REF: 110630-1-BLK R:\AN\_LDVP\011-2061.dwg