

SITE BENCHMARK  
"a" Chiseled on Tap  
of Catch Basin  
Elevation=1409.49  
(NAVD 88)

0-19.55 5+96.00  
W.L. Sta. 0+00.00, Begin Line 1 =  
B.L. Sta. 6+06.08, 83.24' Lt. 103.5'  
Tap Existing 16" Water Line.  
1-16"x8" Tapping Sleeve.  
1-8" Tapping Valve W/Valve Box  
To Be Furnished & Installed By  
The City Of Wichita.  
(Contractor To Reimburse City Of  
Wichita For Tapping Sleeve, Valve &  
Installation \$1830.00.)  
Valve Box Elevation = 1410.30  
Extend 8" Water Line Southerly.

Remove & Replace  
Existing Concrete Sidewalk.  
See Notes #5, #6, & #7.

Remove Existing 53"x34" HERCP  
As Necessary For Water Line  
Construction.

CAUTION! VERIFY!  
Existing 36"x48" HERCP Crossing.  
Depth By Interpolation.

CAUTION!  
Existing Kansas Gas  
Service Line Crossing.  
Depth Unknown.

CAUTION!  
Existing AT&T Line  
Crossings. Depths  
Unknown.

CAUTION!  
Proposed Electric Service  
Line Crossing. Proposed  
Depth Unknown.

W.L. Sta. 1+25.36, Line 1 =  
B.L. Sta. 5+92.84, 41.46' Rt.  
1-22.5' CIMJ Bend Lt.

W.L. Sta. 1+97.88, End Line 1 =  
B.L. Sta. 6+24.14, 94.47' Rt.  
1-Temporary Blowoff Valve.  
Valve Box Elevation = 1412.30

W.L. Sta. 1+88.08, Line 1 =  
B.L. Sta. 6+16.11, 98.76' Rt.  
1-90' CIMJ Bend Lt.

W.L. Sta. 1+45.36, Line 1 =  
B.L. Sta. 5+98.34, 60.60' Rt.  
1-11.25' CIMJ Bend Lt.  
Deflect Pipe 00'39'10" Rt.

CAUTION!  
Proposed 12" RCP Crossing.  
Proposed Depth Per Plan.

W.L. Sta. 0+86.61, PVI, Line 1 =  
B.L. Sta. 5+96.58, 2.89' Rt.  
1-6" CIMJ 45° Bend Down.

W.L. Sta. 0+83.63, PVI, Line 1 =  
B.L. Sta. 5+96.58, 0.07' Lt.  
1-6" CIMJ 45° Bend Up.

W.L. Sta. 0+71.95, Line 1 =  
B.L. Sta. 5+98.07, 11.69' Lt.  
1-Fire Hydrant Assembly  
(L=8')  
Valve Box Elevation = 1410.20  
Hydrant Bury Elevation = 1410.30  
1-CIMJ 8"x6" Reducer (S)  
1-6" Line Valve (S)  
Valve Box Elevation = 1410.20

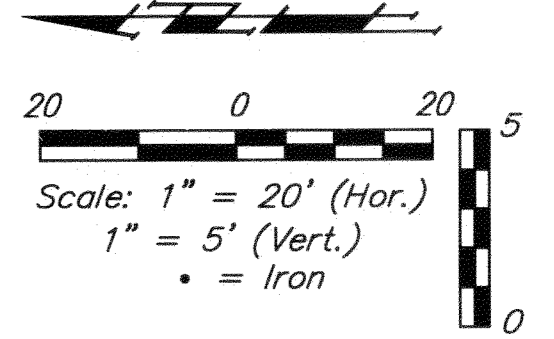
71.95 L.F. 8" Restrained Joint  
Pipe By Directional Bore.  
W.L. Sta. 0+00.00 To  
W.L. Sta. 0+71.95.

20.29 L.F. 8" D/C/L  
Pipe w/11.25° Bend.

Alternate 16"  
Line Location

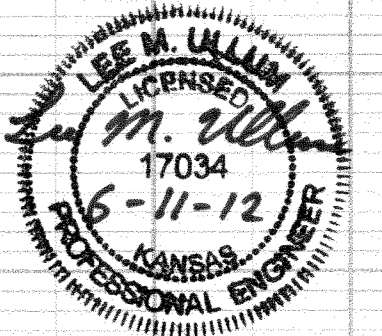
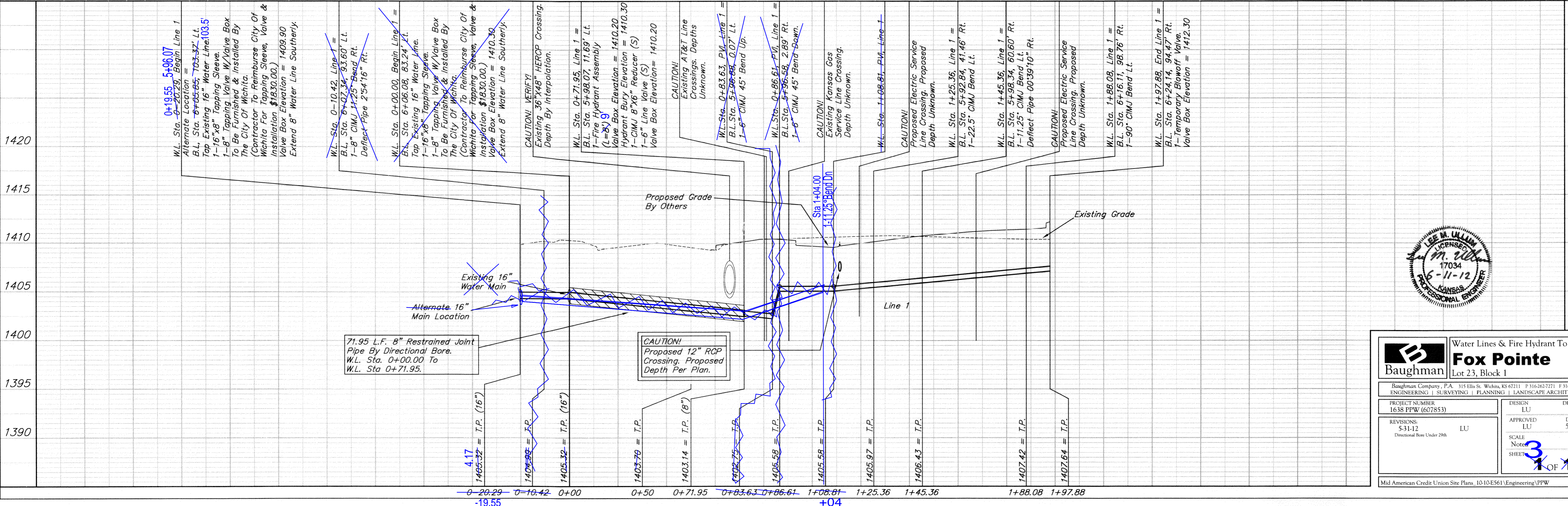
NOTE:  
Exact Location Of Existing 16" AC Water Main  
Unknown. The 2 Locations Shown Are From Best  
Obtained Information. Exploratory Trenching Will  
Be Necessary To Determine Exact Location &  
Depth Of Existing 16" Water Main.

Northwest Property Corner =  
Base Line 5+00.00



Contractor To Use Extreme Caution  
When Excavating Near Utility Lines.  
Contractor To Hand Dig To Expose All  
Utility Lines Prior To Construction.  
Verify Depth To Determine Conflict If Any.

Contractor Shall Follow All Applicable  
Best Management Practices (BMP)  
For Erosion Control.



<b>Baughman</b>		<b>Fox Pointe</b>	
Water Lines & Fire Hydrant To Serve		Lot 23, Block 1	
Baughman Company, P.A. 315 Ellis St. Wichita, KS 67211 P:316.262.7271 F:316.262.0149			
ENGINEERING   SURVEYING   PLANNING   LANDSCAPE ARCHITECTURE			
PROJECT NUMBER 1638 PPW (607853)	DESIGN LU	DRAWN LU	
REVISIONS 5-31-12 Directional Bore Under 29th	APPROVED LU	DATE 5/12	
		SCALE Note	
		SHEET 3 OF 4	