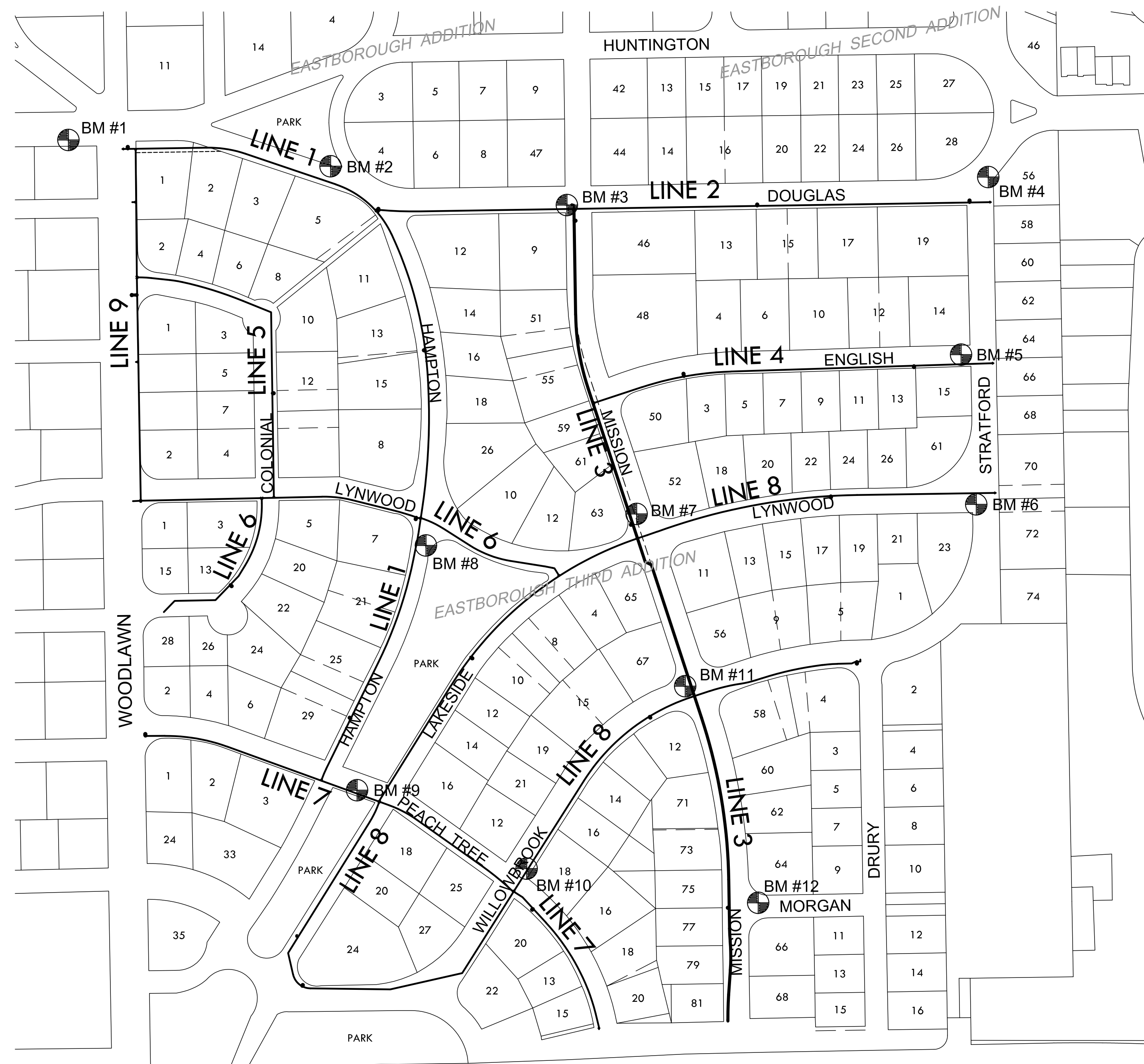




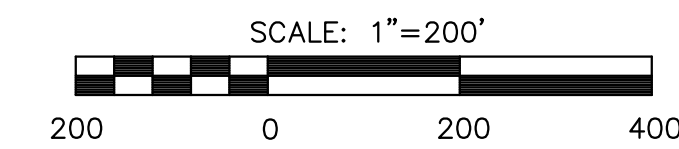
**WATER MAIN REPLACEMENT PLANS FOR
EASTBOROUGH SOUTH**



KELLOGG / US-54

BENCHMARKS

- BM #1 COW benchmark disc on southwest corner of Douglas and Woodlawn, 125.8' West of centerline Woodlawn and 34.9' South of centerline Douglas.
Elev. = 179.46
- BM #2 Chiseled square on top of curb at west end of curb return on northwest corner of Douglas Avenue and Hampton Road.
Elev. = 180.94 (COW Datum).
- BM #3 Chiseled square on top of curb at west end of curb return on southwest corner of Mission Road and Douglas Avenue.
Elev. = 179.28 (COW Datum).
- BM #4 Chiseled square on top of curb at north end of curb radius on the east side of Stratford Lane where Stratford Lane meets Douglas Avenue, 19' Southeast of center of Douglas Avenue and 11' East of the east curb of Stratford Lane extended north.
Elev. = 168.85 (COW Datum).
- BM #5 Chiseled square on top of curb at west end of curb return on northwest corner of Stratford Lane and English Avenue.
Elev. = 171.28 (COW Datum).
- BM #6 Chiseled square on top of curb at west end of curb return on southwest corner of Stratford Lane and Lynwood Boulevard. 35' west of center of Stratford Lane, 11' south of center Lynwood Boulevard.
Elev. = 171.63 (COW Datum).
- BM #7 Chiseled square on top of curb at north end of curb return on northwest corner of Lynwood Boulevard and Mission Road.
Elev. = 176.21 (COW Datum).
- BM #8 Chiseled square on top of curb at south end of curb return on southeast corner of Lynwood Boulevard and Hampton Road.
Elev. = 172.79 (COW Datum).
- BM #9 Chiseled square on top of curb on south side Peach Tree Lane, 81' East of center of Hampton Road, 8' East of center of sidewalk to the South.
Elev. = 167.26 (COW Datum).
- BM #10 Chiseled square on top of curb, 8' Northeast of north end of curb return on northeast corner of Peach Tree Lane and Willowbrook Road, 51' Northeast of center of Peach Tree Lane and 10' Southeast of center of Willowbrook Road.
Elev. = 171.12 (COW Datum).
- BM #11 Chiseled square on top of curb at approximate mid-point of curb radius on northwest corner of Mission Road and Willowbrook Road, 19' NNW of center of Willowbrook Road and 31' WSW of center of Mission Road.
Elev. = 174.69 (COW Datum).
- BM #12 Chiseled square on top of curb at east end of curb return on northeast corner of Mission Road and Morgan Lane.
Elev. = 172.64 (COW Datum).



BENCHMARKS

SHEET TITLE
448-90213
PROJECT NUMBER

DFL / JWC / JRA
DESIGNED / DRAWN / CHECKED

ISSUED
August 2012
REVISED

SHEET NO.
2 of 40