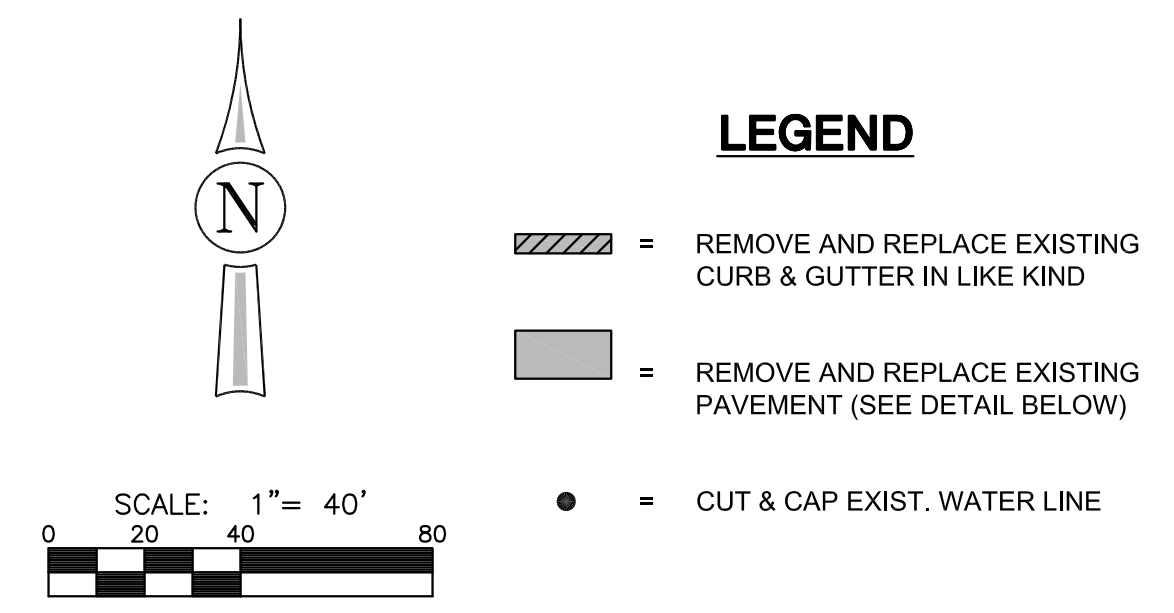
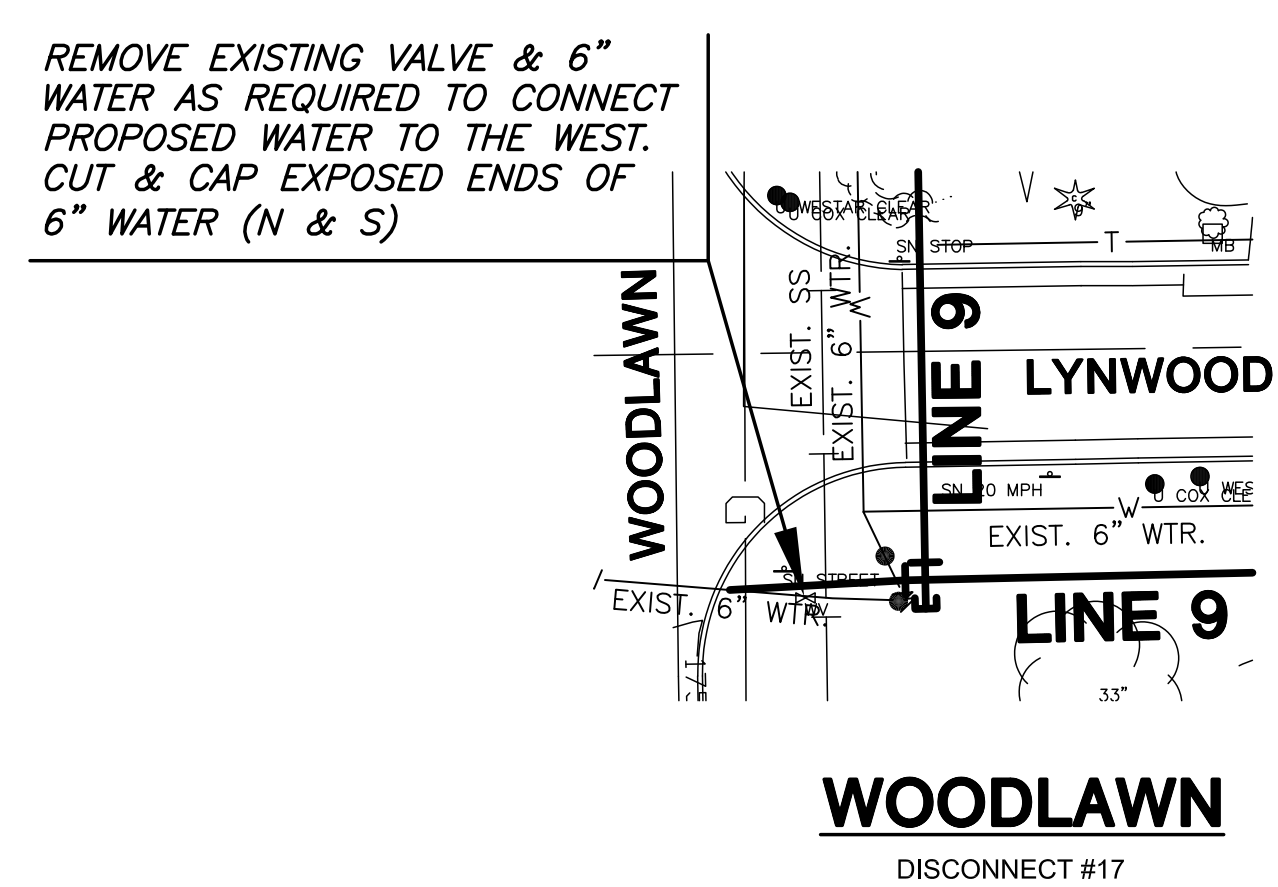
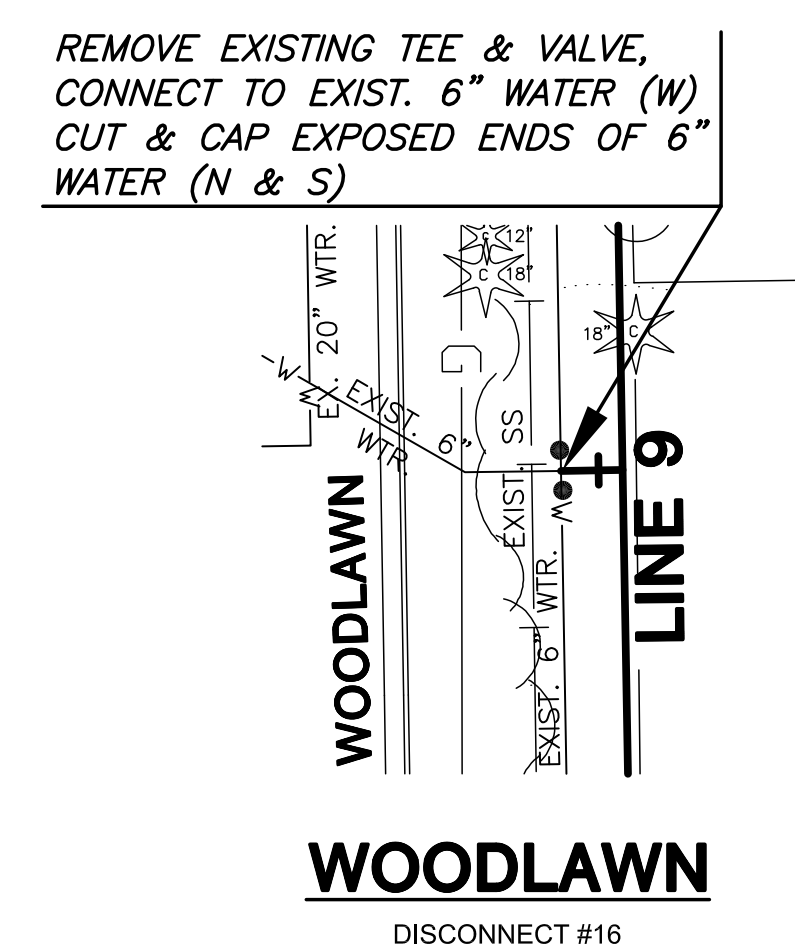
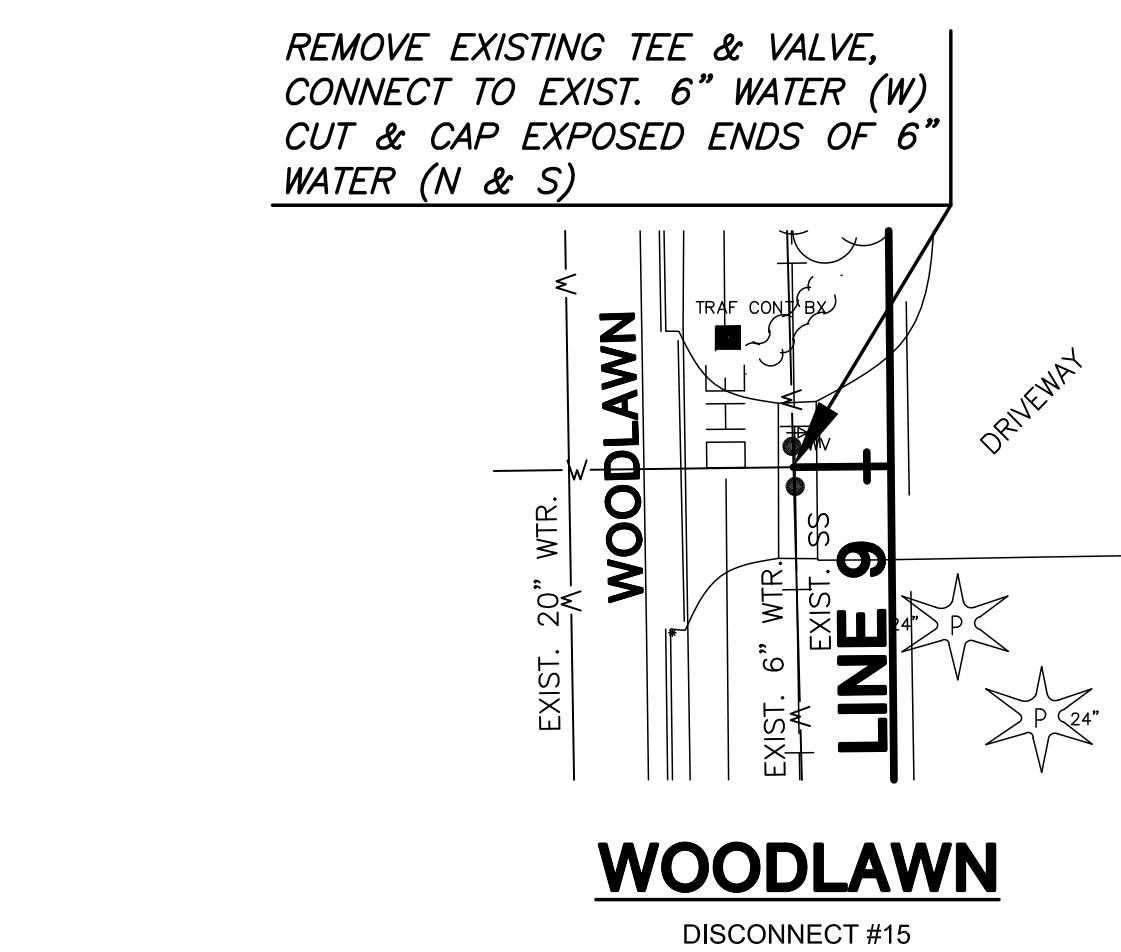
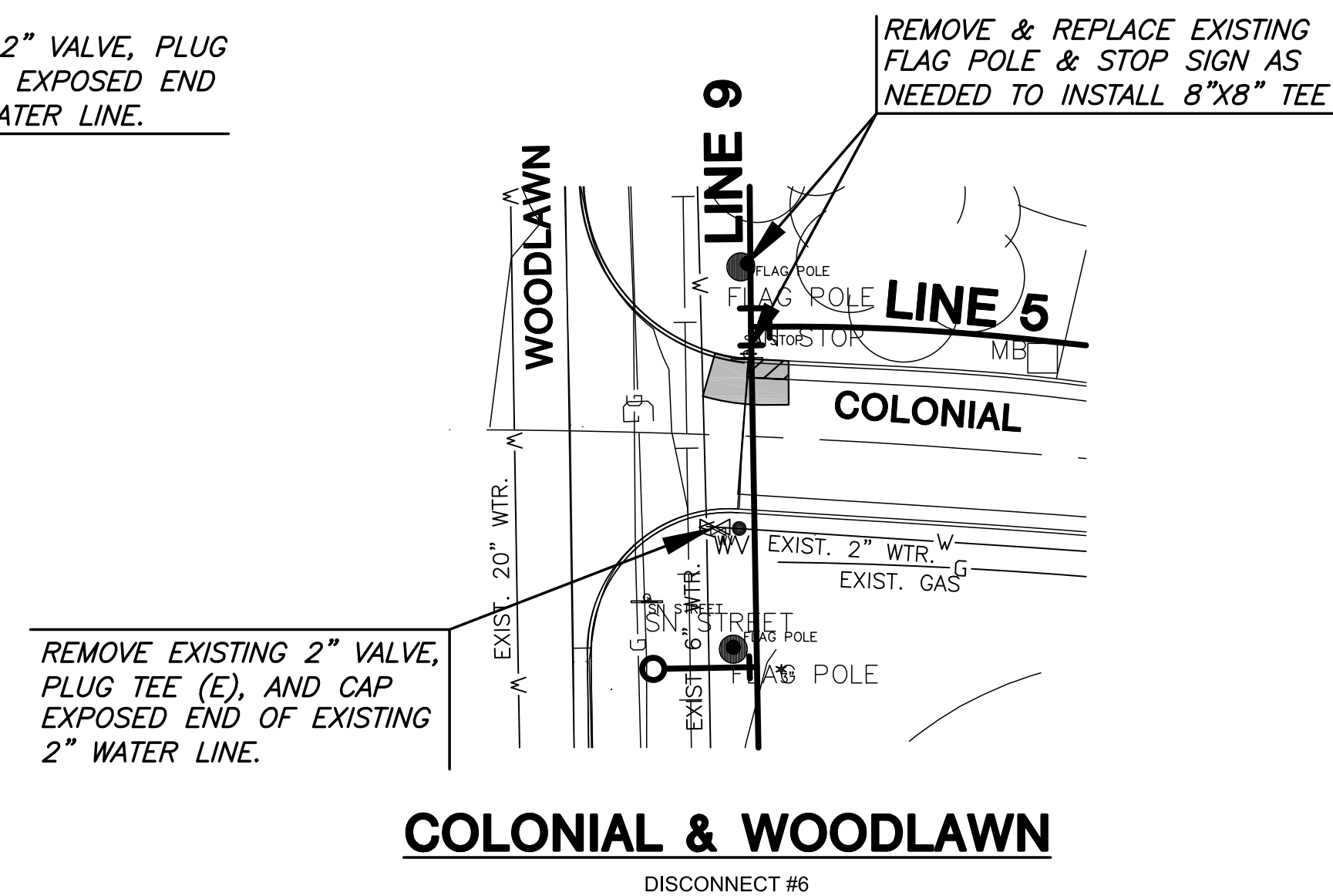
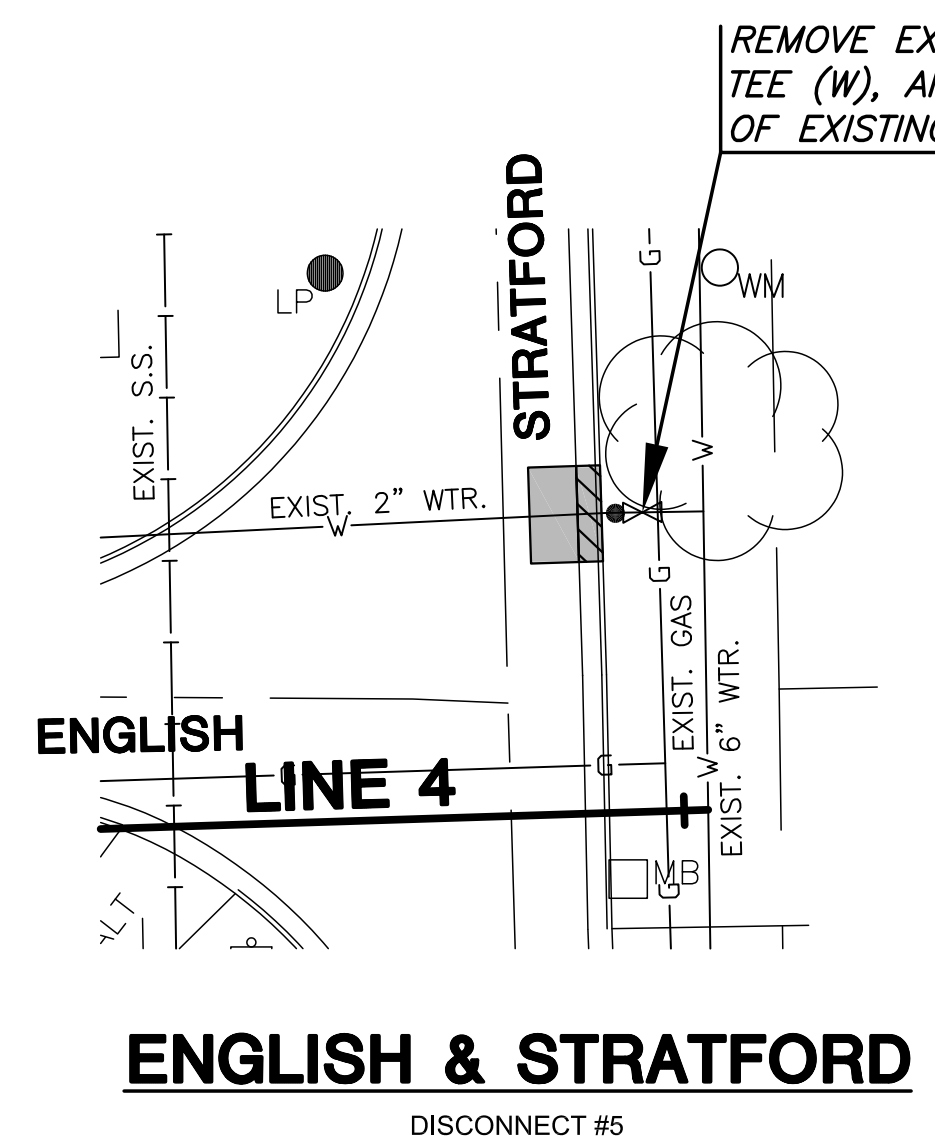
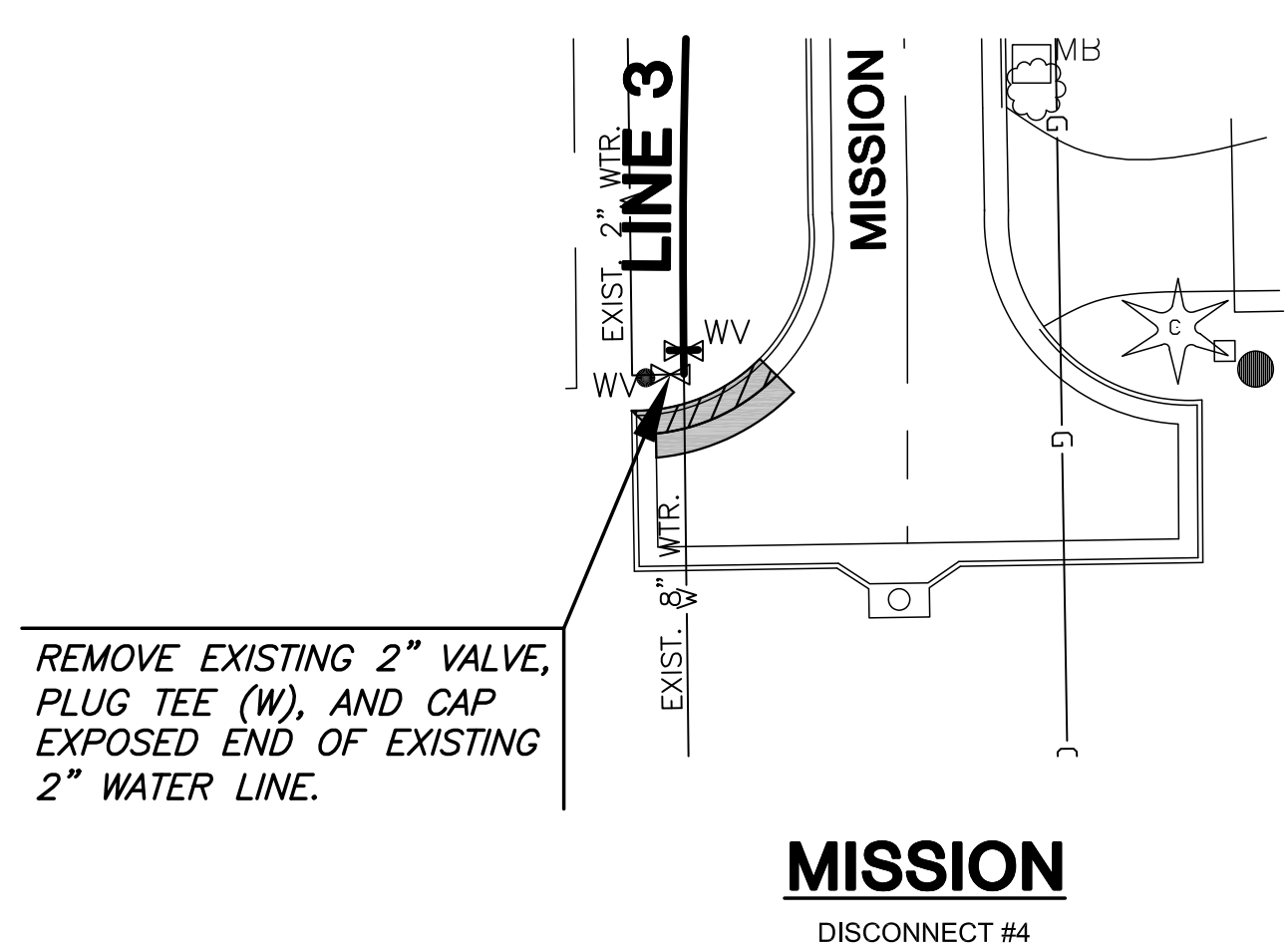
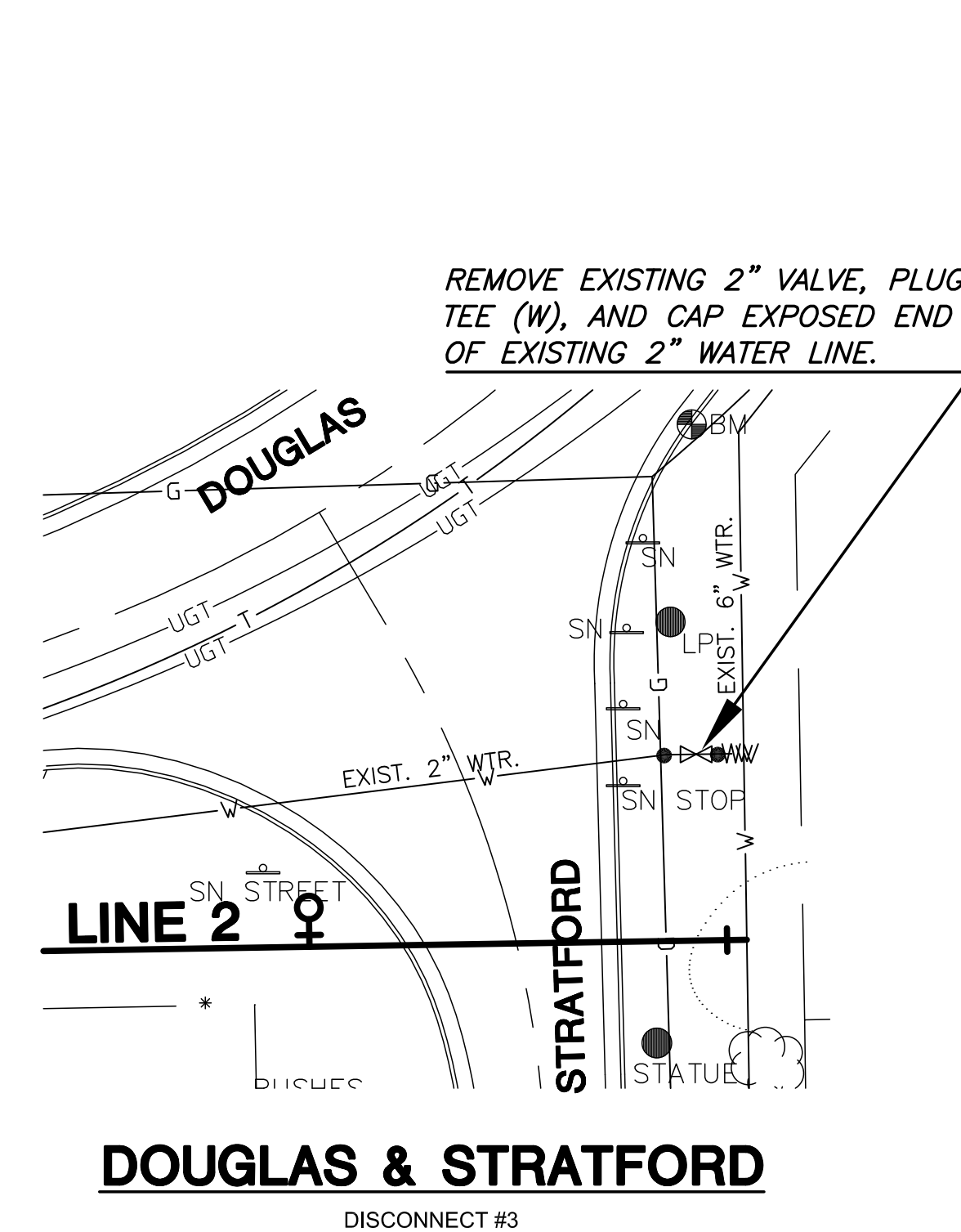
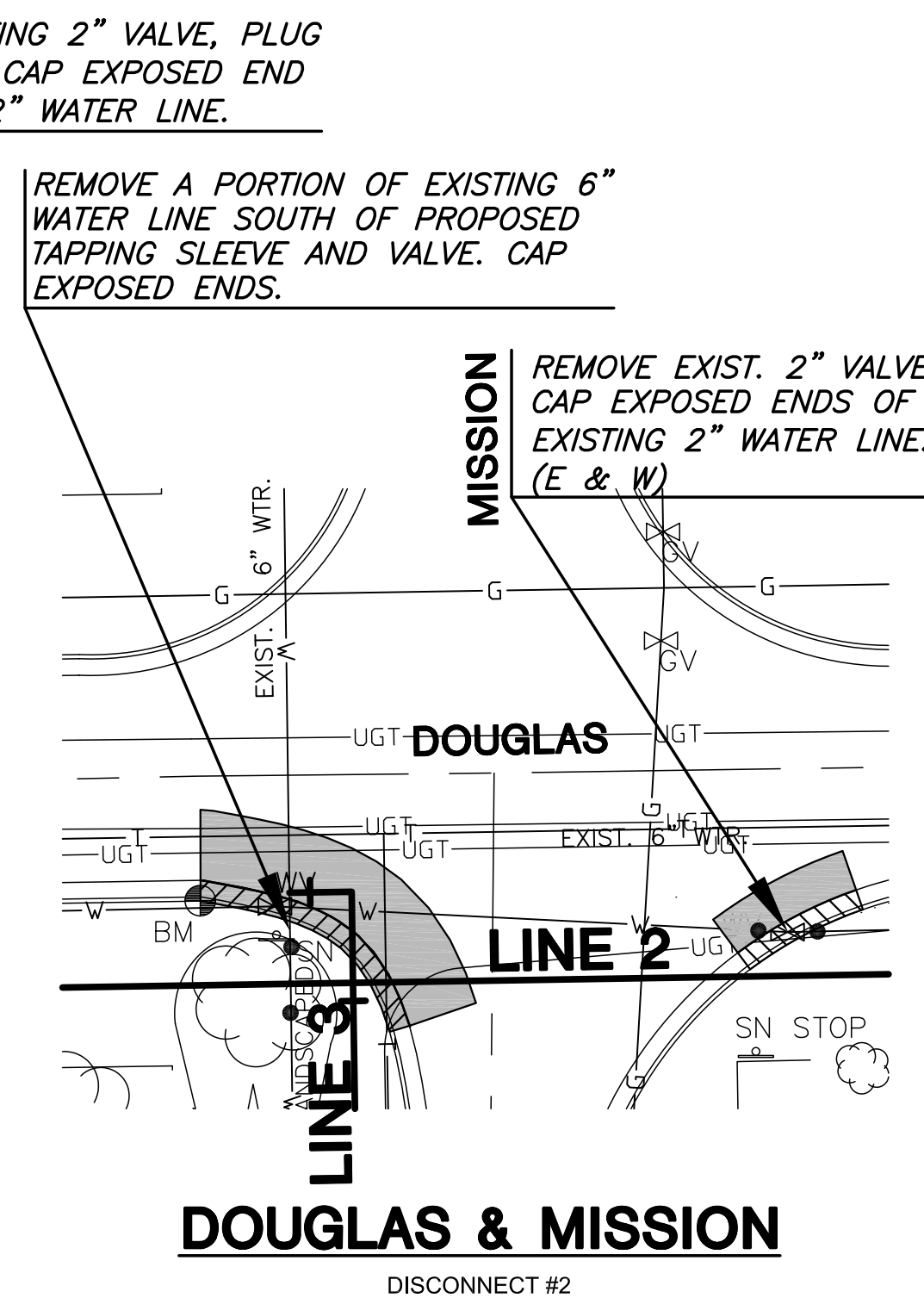
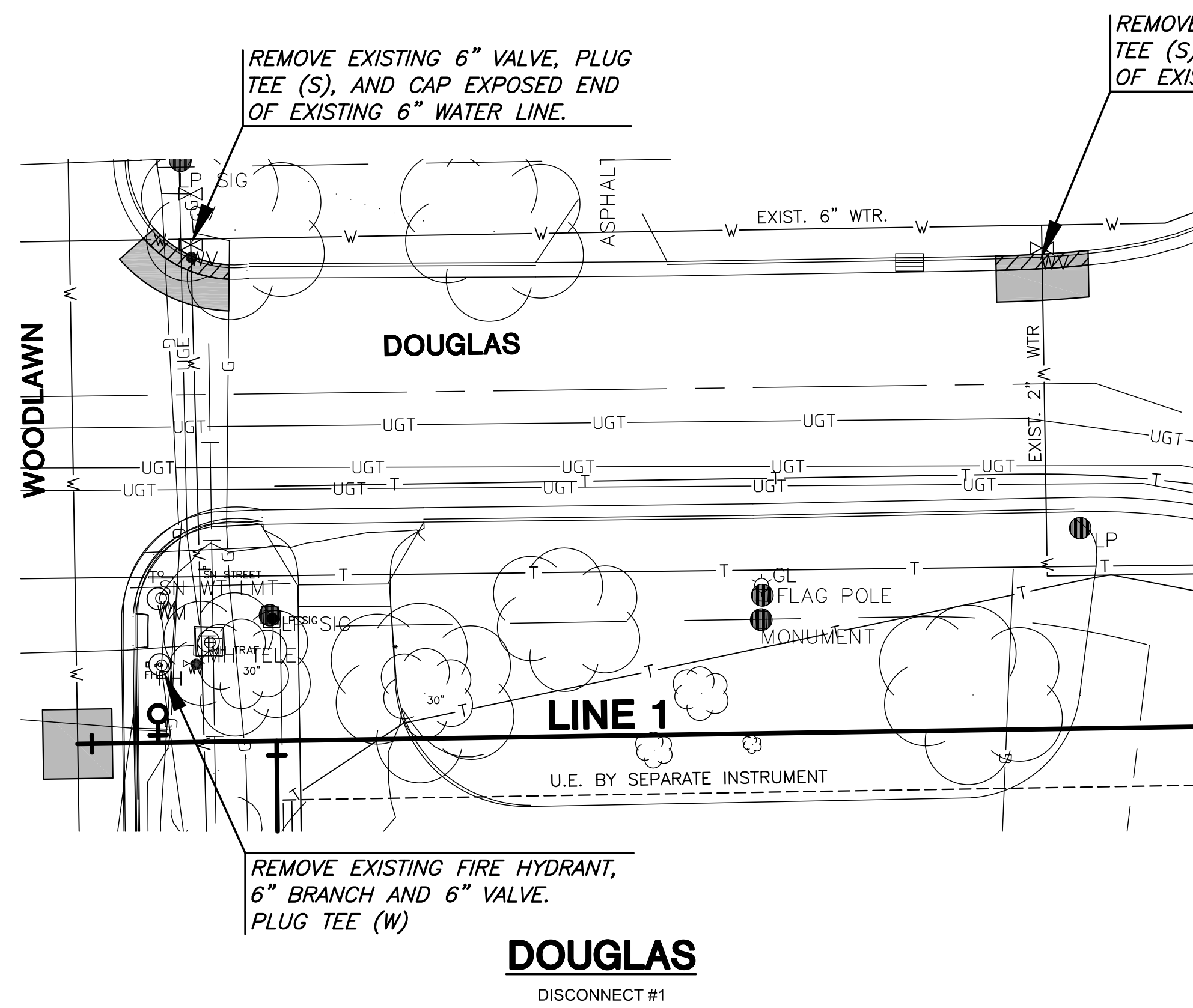


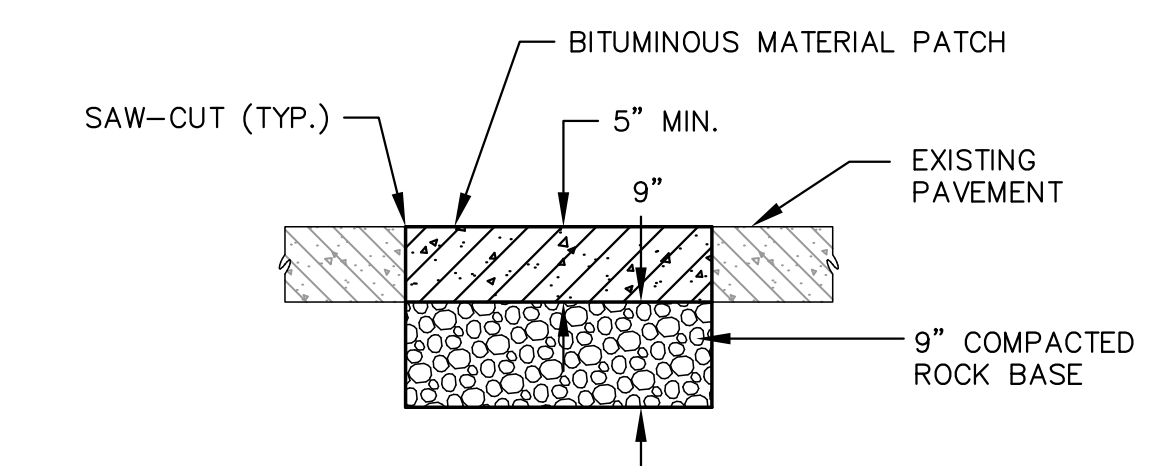
**WATER MAIN REPLACEMENT PLANS FOR
EASTBOROUGH SOUTH**

GENERAL NOTES

1. THE CONTRACTOR SHALL SCHEDULE CONSTRUCTION ACTIVITIES SO AS TO LIMIT WATER SERVICE DOWN TIME TO RESIDENCES. WHEREVER POSSIBLE, THE PROPOSED WATER DISTRIBUTION SYSTEM SHALL BE IN PLACE AND ACTIVE ALONGSIDE THE EXISTING SYSTEM WHILE NEW SERVICE LINES ARE INSTALLED TO THE PROPOSED MAINS. ALL PROPOSED SERVICES SHALL BE CONNECTED TO THE PROPOSED MAINS PRIOR TO DISCONNECTING EXISTING WATER MAINS. THE CONTRACTOR WILL BE RESPONSIBLE FOR PROVIDING A COPY OF HIS CONSTRUCTION SCHEDULE TO THE PROJECT ENGINEER AND THE CITY OF EASTBOROUGH, KANSAS FOR APPROVAL PRIOR TO CONSTRUCTION START.
2. CONTRACTOR TO VERIFY LOCATION AND ELEVATION OF EXISTING UTILITIES PRIOR TO CONSTRUCTION START.
3. EXISTING WATER LINE DISCONNECTS SHALL BE SCHEDULED AND EXECUTED IN A MANNER THAT MINIMIZES WATER SERVICE DOWN TIME AND DISRUPTION TO TRAFFIC FLOW IN ALL AREAS.
4. THE "ABANDON EXISTING SYSTEM" BID ITEM WILL COVER ALL COSTS FOR TAKING THE EXISTING WATER MAINS OUT OF SERVICE WITH THIS PROJECT. THIS INCLUDES CUTTING AND CAPPING OF EXISTING LINES, VALVE REMOVAL, METER CANS ETC. CALLED OUT IN THE PLANS FOR MAINS AND LINES CONNECTED TO MAINS.
5. ANY EXISTING LANDSCAPING, HARDSCAPING, FENCING, LAWN TURF, ETC. DISRUPTED SHALL BE REPAIRED OR REPLACED IN LIKE KIND. THESE ACTIVITIES SHALL TAKE PLACE AS SOON AS POSSIBLE AFTER CONSTRUCTION ACTIVITIES IN EACH AREA ARE COMPLETED.
6. WHEN WORKING IN AREAS SURROUNDING EXISTING TREES, THE CONTRACTOR SHALL PROCEED WITH CAUTION AVOIDING DAMAGE TO ROOT STRUCTURES OR LOW-LYING BRANCHES. IT WILL BE THE RESPONSIBILITY OF THE CONTRACTOR TO ADDRESS ANY DAMAGES TO EXISTING TREES PRIOR TO END OF CONSTRUCTION ACTIVITIES ON SITE.
7. IN AREAS WHERE CURB AND GUTTER IS REMOVED OR EXCAVATION TAKES PLACE WITHIN TEN FEET OF THE BACK OF EXISTING CURB, BACK OF CURB PROTECTION SHALL BE REQUIRED.
8. ADDITIONAL PAVEMENT AND OR CURB REMOVAL MAY BE REQUIRED AND SHALL BE SUBSIDIARY TO PROJECT.



NOTE: BITUMINOUS MATERIAL SHALL BE HMA - COMMERCIAL GRADE (CLASS A), CONFORMING TO REQUIREMENTS OF SECTION 602 "KDOT STANDARD SPECIFICATIONS FOR STATE ROAD & BRIDGE CONSTRUCTION, 2007"



PAVEMENT REMOVAL & REPLACEMENT DETAIL
FOR USE ON RESIDENTIAL STREETS
NO SCALE

WATER LINE DISCONNECTS
SHEET TITLE
448-90213
PROJECT NUMBER

DFL / JWC / JRA
DESIGNED / DRAWN / CHECKED

ISSUED
August 2012
REVISED

SHEET NO.
25 of 40