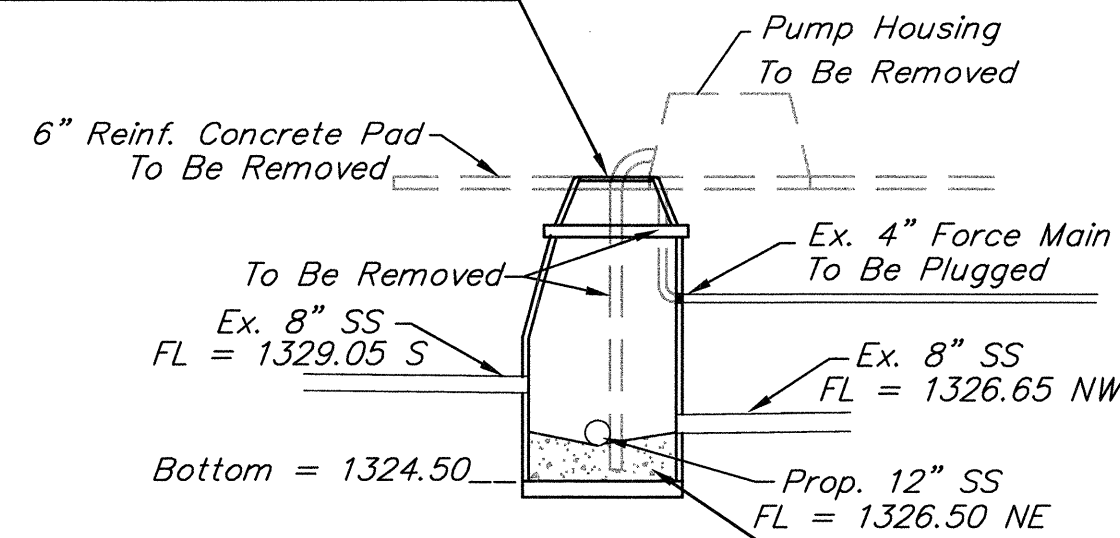
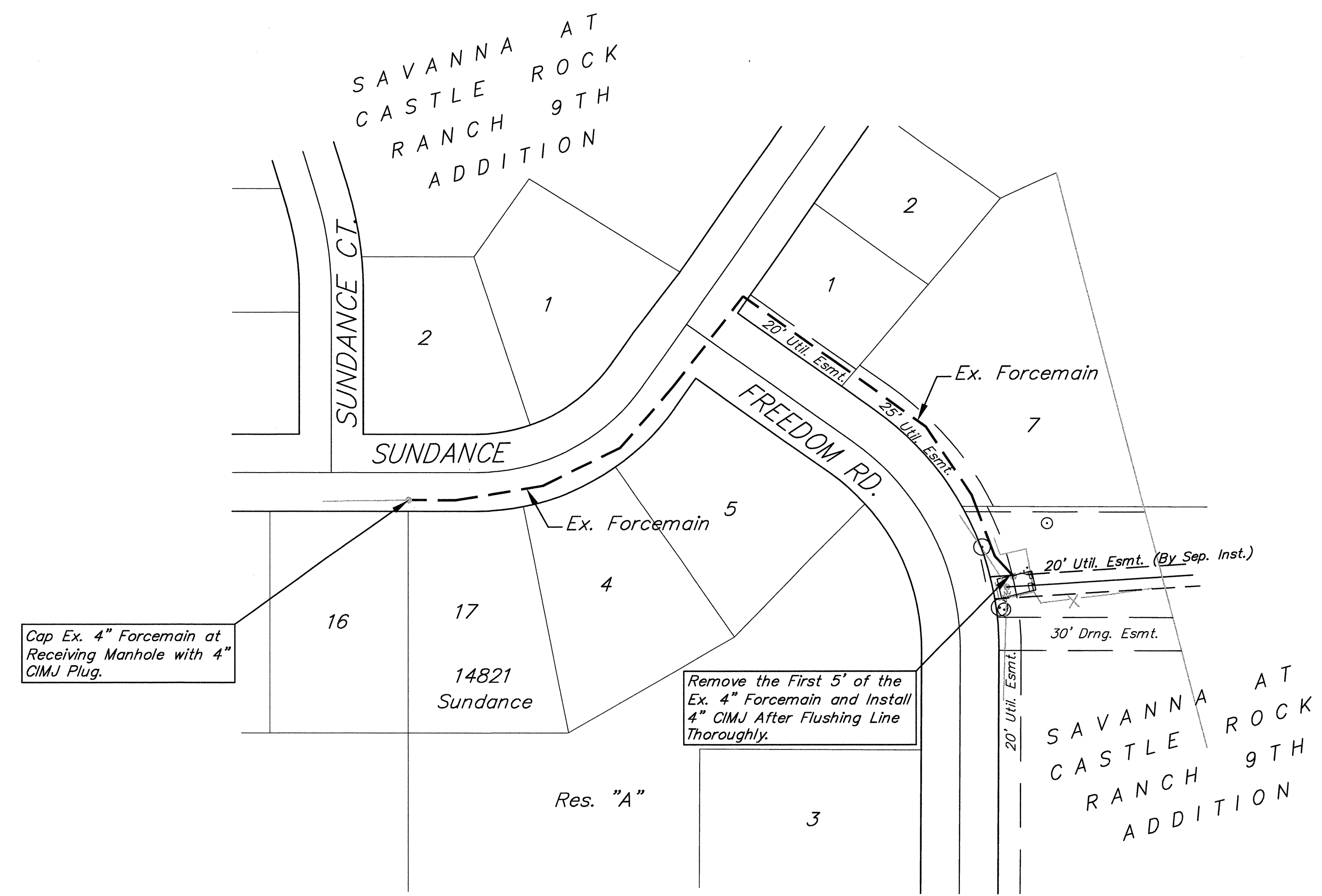


Remove Top 2' of Existing Wet Well. Construct Flat Manhole Top, Adjustment Ring, Frame, and Lid.

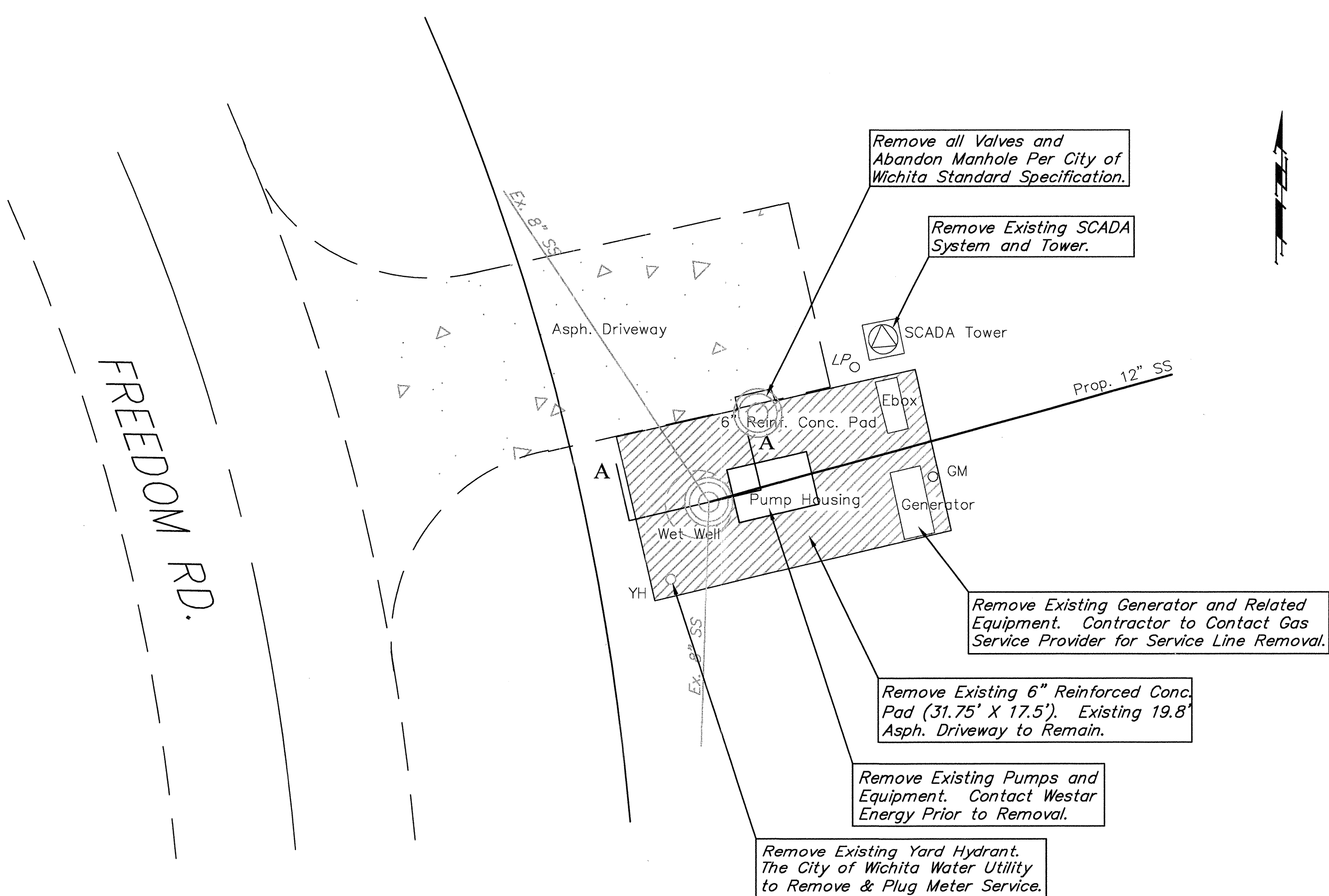


Fill Existing Wet Well with Approx. 61 C.F. of Concrete and Form Invert as Shown.

SECTION A-A



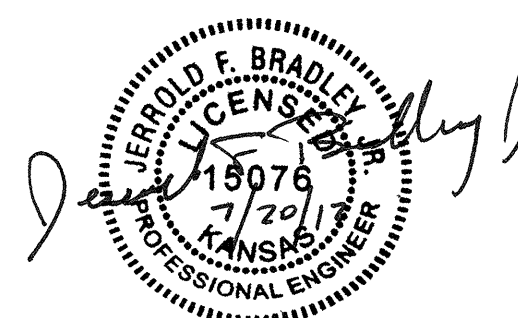
4" FORCEMAIN ABANDONMENT DETAIL



PLAN VIEW

SAVANNA @ CASTLE ROCK (L.S. # 46) STATION DEMOLITION PLAN

- Salvaged Items Shall be Cleaned and Stockpiled on Site for the Engineers Inspection. Acceptable Items Shall be Delivered to the City of Wichita Sewage Treatment. Contact Sid Fleming at 303-8702 to coordinate.
- Prior to Beginning Salvage/Demolition of the Existing Pump Station, the Contractor Shall Contact the Utility Companies to Request that all Utility Services be Disconnected. All necessary Costs to be paid by the Contractor.
- The Contractor Shall Give the City of Wichita Sewer Department a Minimum of 72 Hours Notice Prior to the Demolition of the Pump Station.
- The Contractor Shall Thoroughly Flush the Force Main with Clean Water. Once the Force Main is Clean, the Contractor Shall Remove the First 5 L.F. and Cap the 4" Line with CIMJ Caps.
- The Contractor Shall Clean the Wet Well and Dispose of the Solids and the Cleaning Materials in a Manner as approved by the Engineer Prior to Filling the Wet Well with Concrete.
- The Lump Sum Bid Item for Pump Station Demolition Shall Include, but not be limited to, the Removal/ Abandonment of All Piping and Structures and Plugging all Manhole pipe penetrations. All Costs for Maintaining Sewage Flows Shall also be Included in this Bid Item.
- Sewage Flow Shall not be Diverted Through the New Pipes or Manholes Until Testing has been Completed and Accepted.
- All Concrete Rubble and Other Unsalvageable Material Shall be Completely Removed from the Site and the Contractor Shall Sod all of the Areas Disturbed by the Demolition. Cost to be **SUBSIDIARY** to the Measured Quantity Bid Item "Sodding".



		STONEBRIDGE ADDITION DEMOLITION PLAN OFFSITE SAN SEWER IMPROVEMENTS	
Baughman Company, P.A. 315 Ellis St. Wichita, KS 67211 P 316-263-7271 F 316-263-0149 ENGINEERING SURVEYING PLANNING LANDSCAPE ARCHITECTURE			
PROJECT NUMBER 468-84377	DESIGN JFB	DRAWN TCA	
REVISIONS:	APPROVED JFB	DATE 08/09	
	SCALE Noted		
			2 OF 11
Stonebridge Addition\Details\Misc.dwg			07-07-E888